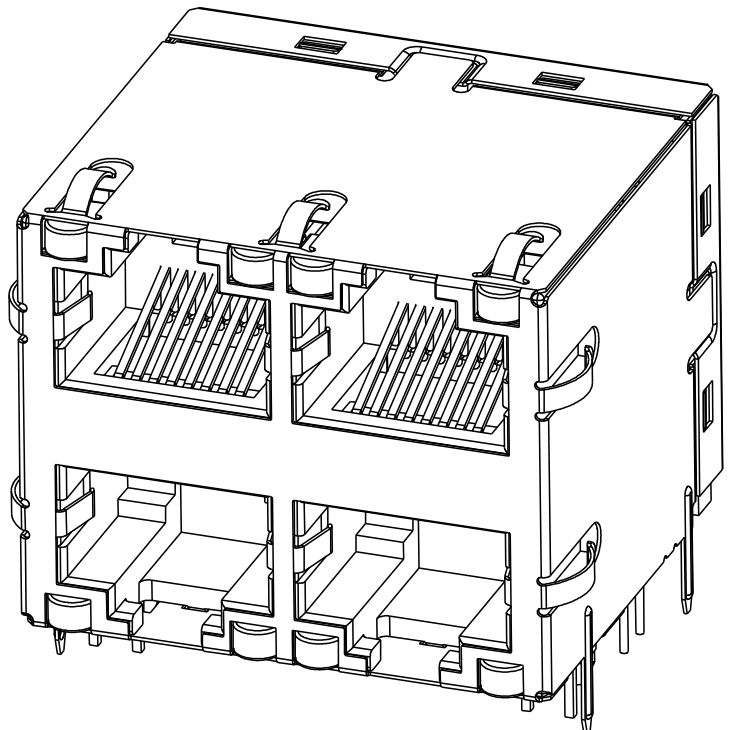
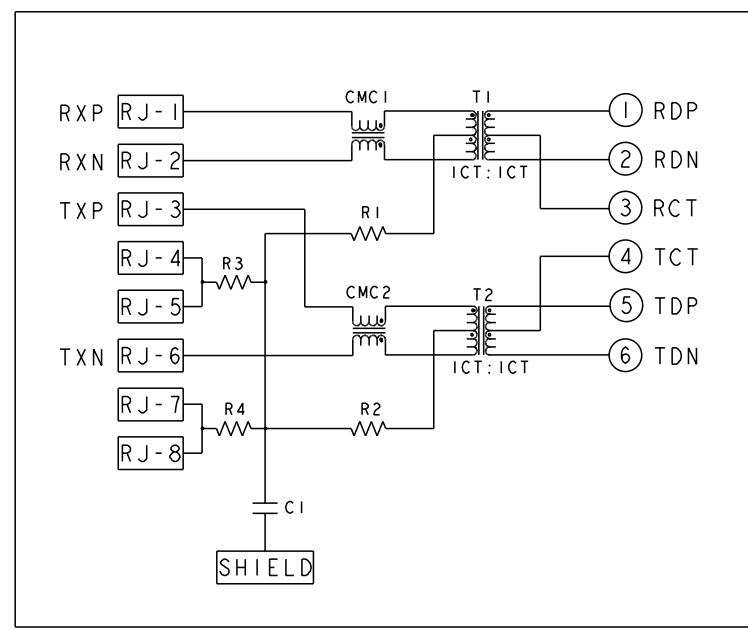


REVISIONS				
P	LYR	DESCRIPTION	DATE	APPD
C		LOGO CHANGE	02APR2013	TR KZ



TOP AND BOTTOM PORTS $\triangle\triangle$



C1 = 1000pF, 2kV, X7R DECOUPLING CAP
 R1-R4 = 75 Ohms, RESISTORS

1. MATERIALS:
 PLASTIC HOUSING: BLACK, THERMOPLASTIC FLAMMABILITY RATING UL 94V-0
 SHIELD: BRASS, PREPLATED WITH 0.76um MIN SEMI-BRIGHT NICKEL,
 POST DIPPED WITH 2.54um MIN SAC SOLDER ON SOLDER TAILS,
 CONTACTS: PHOSPHOR BRONZE, 1.27um MIN OVERALL NICKEL
 UNDERPLATE WITH SELECTED 1.27um MIN GOLD AT MATING INTERFACE
 AND 2.54um MIN MATTE TIN ON SOLDER TAILS,
 LED: DIFFUSED EPOXY LENS, CARBON STEEL LEAD FRAME TAILS OF LED
 ARE PREPLATED WITH 2.03um MIN SILVER OVER 1.02um MIN NICKEL
 UNDERPLATE OVER 1.02um MIN COPPER UNDERPLATE, POST-PLATED WITH
 2.54um MIN MATTE TIN AND/OR SAC SOLDER DIP OR PURE TIN SOLDER DIP

- \triangle MAGNETICS
 APPLICATION: 10/100 BASE-T
 IMPEDANCE: 100 OHMS
 TURNS RATIO (CHIP:CABLE): TX = 1:1, RX = 1:1
 OPEN CIRCUIT INDUCTANCE (OCL): 350uH MIN @100kHz, 0.1VRMS,
 8mADC BIAS FROM 0°C TO 70°C, TX AND RX
 PERFORMANCE @ 25°C:
 INSERTION LOSS (IL): 1.1dB MAX FROM 0.5MHz TO 100MHz
 RETURN LOSS (RL): 18dB MIN FROM 0.5MHz TO 30MHz
 18-20LOG(f/30)dB MIN FROM 30.1MHz TO 60MHz
 12dB MIN FROM 60.1MHz TO 80MHz
 CROSSTALK ATTENUATION: 35dB MIN FROM 0.5MHz TO 40MHz
 33-20LOG(f/50)dB MIN FROM 40.1MHz TO 100MHz
 COMMON MODE REJECTION RATIO (CMRR): 30dB MIN FROM 0.5MHz TO 100MHz
 ISOLATION VOLTAGE: 2250VDC (MAX) FOR 60 SECONDS WITH A RISE TIME OF
 500V/SEC AND WITH ALL PORTS CONNECTED.

- \triangle PART NUMBER, DATE CODE AND COUNTRY OF ORIGIN ARE
 LOCATED IN APPROXIMATE AREA SHOWN. DATE CODE: YYWWD WHERE "YY" IS YEAR,
 "WW" IS WEEK, "D" IS DAY OF WEEK, WITH SUNDAY=1.

- \triangle TRP LOGO AND AGENCY APPROVAL LOGO ARE
 LOCATED IN APPROXIMATE AREA SHOWN.

5. OPERATING TEMP: FROM 0°C TO +70°C.
 6. RJ45 CAVITY CONFORMS TO FCC RULES AND REGULATION PART 68 SUBPART F.

- \triangle INDICATED MAGNETIC CONNECTIONS ARE SYMMETRICAL AND
 SUPPORT AUTO-MDI/MDIX.

- \triangle DATUM AND BASIC DIMENSION ESTABLISHED BY CUSTOMER.

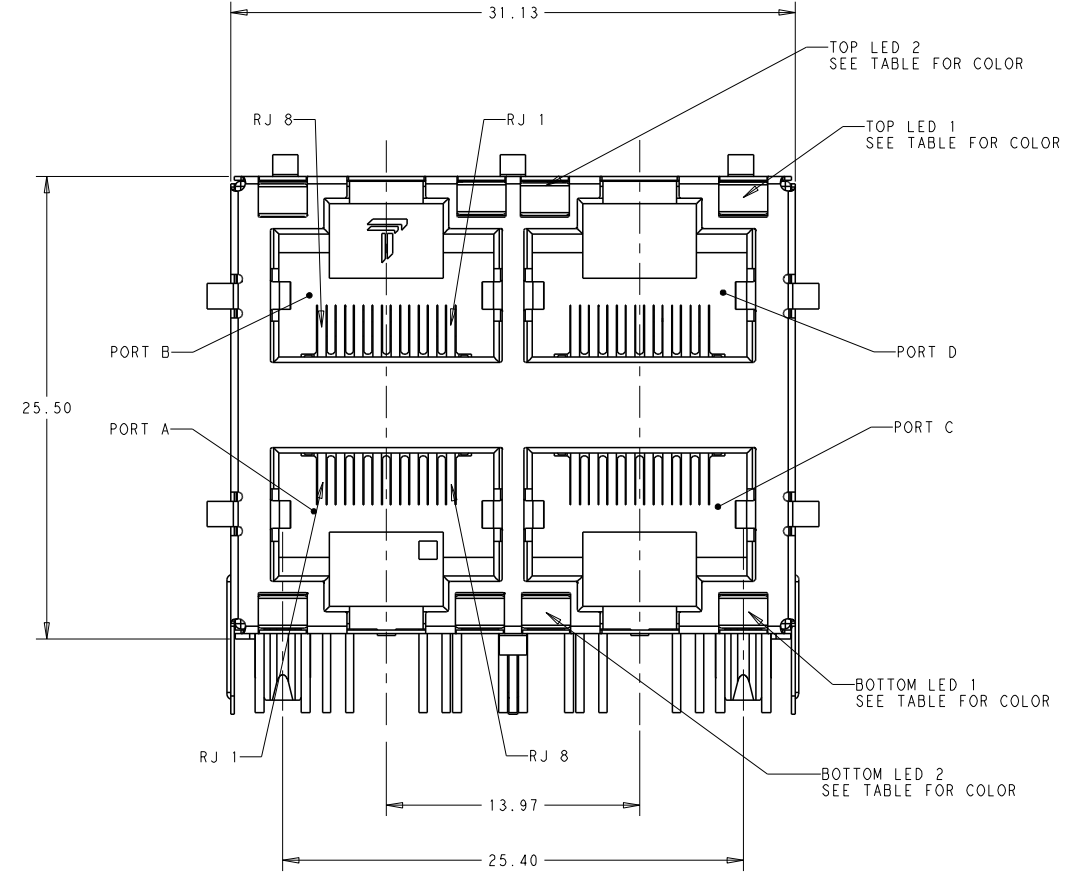
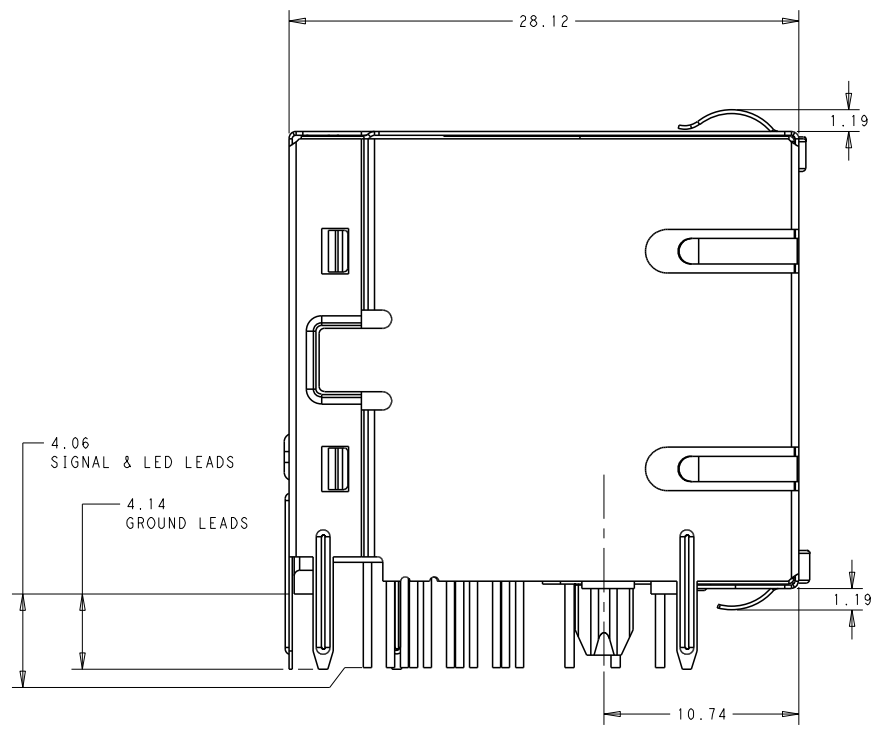
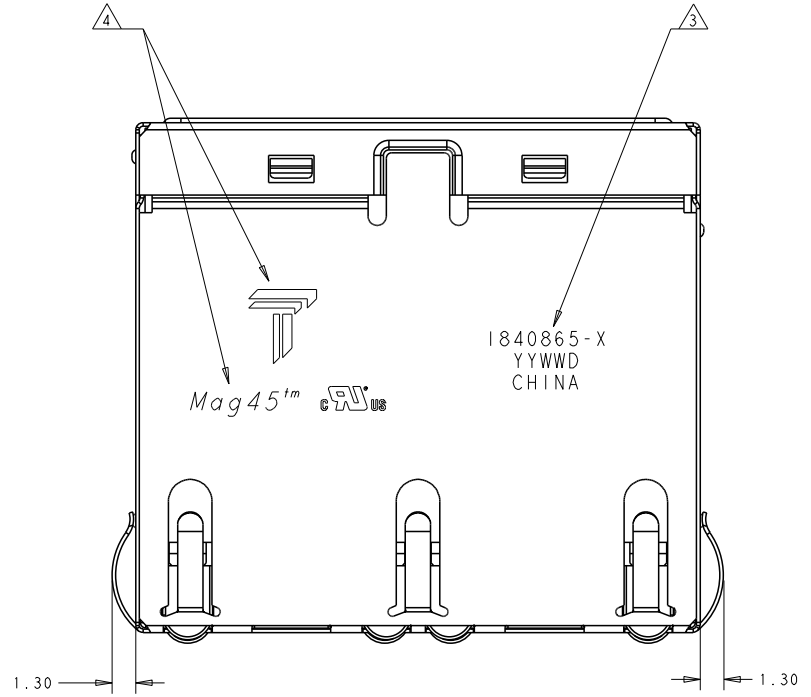
- \triangle BASIC DIMENSION ESTABLISHED BY CUSTOMER, BUT MAY NOT BE
 GREATER THAN 5.08mm.

- \triangle LEDs ARE DRIVEN WITH CONSTANT CURRENT AT APPROX 20mA
 LED COLOR: DOMINANT WAVELENGTH (λ D): GREEN 568 nm TYP. @ IF=20mA
 FORWARD VOLTAGE (VF): GREEN 2.2V TYP. @ IF=20mA
 DOMINANT WAVELENGTH (λ D): YELLOW 588 nm TYP. @ IF=20mA
 FORWARD VOLTAGE (VF): YELLOW 2.1V TYP. @ IF=20mA

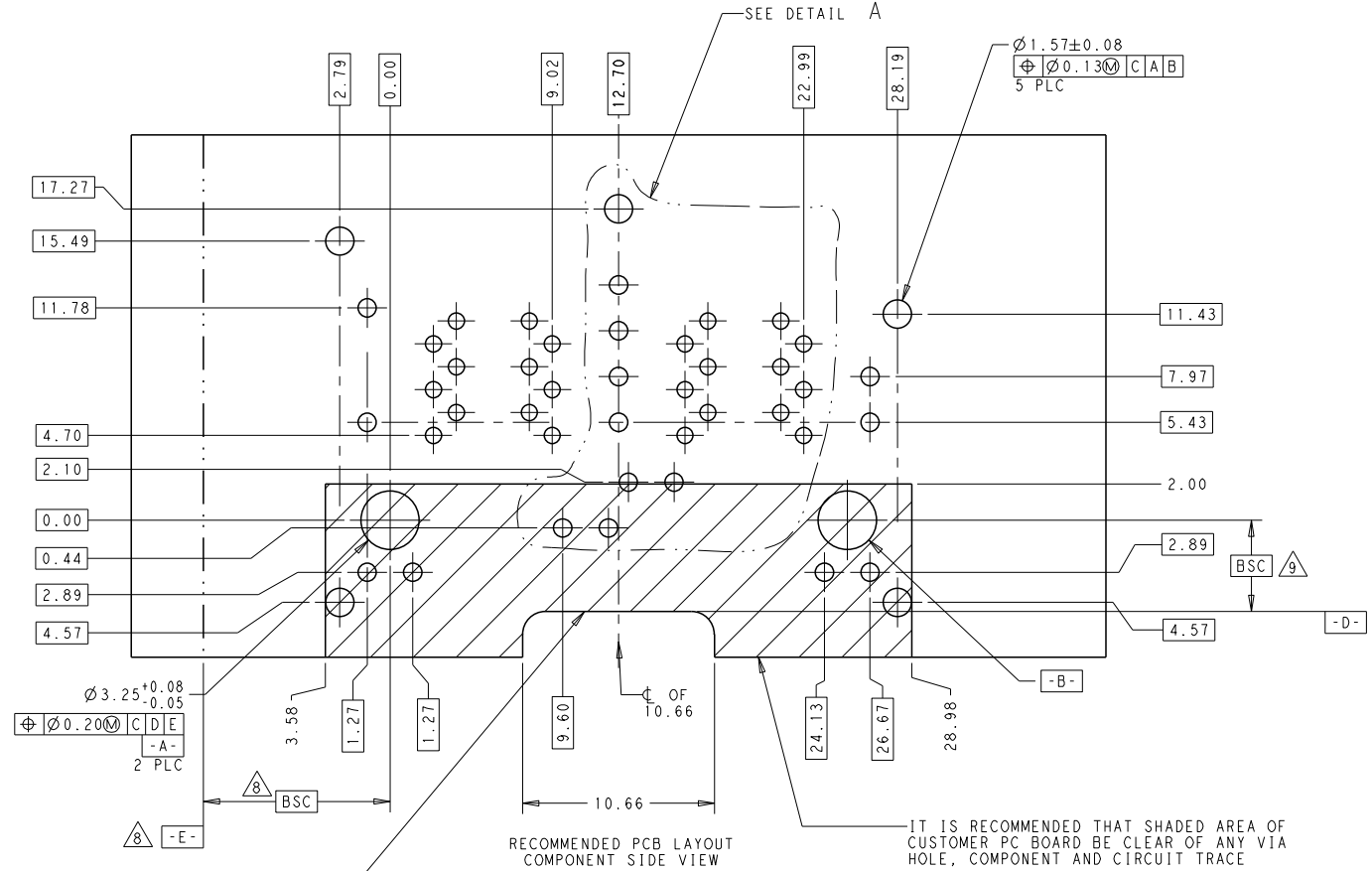
11. THE PARTS ARE RECOMMENDED FOR WAVE SOLDERING PROCESS,
 PEAK TEMPERATURE 260°C MAX, 10 SECONDS MAX.

GRN/YEL	GRN/YEL	GRN/YEL	GRN/YEL	1840865-4
BOTTOM LED 2	BOTTOM LED 1	TOP LED 2	TOP LED 1	PART NUMBER

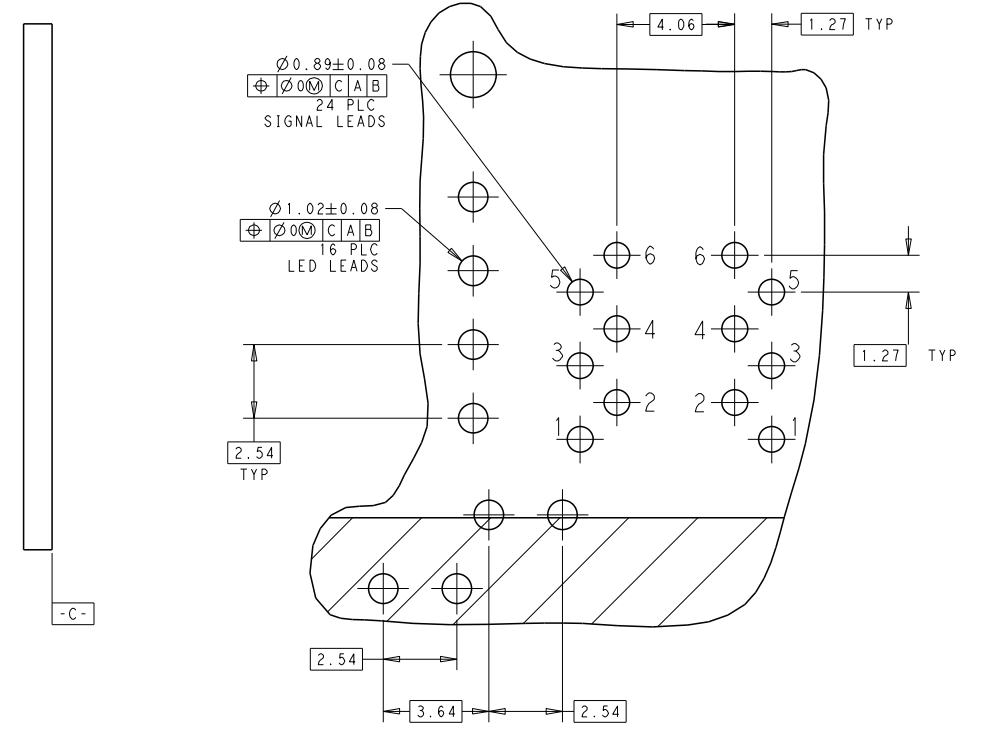
THIS DRAWING IS A CONTROLLED DOCUMENT.		DRW: TOM HSU 19NOV2010	TRP connector Dongguan China
DIMENSIONS: mm		CHK: TONY YUAN 19NOV2010	
TOLERANCES UNLESS OTHERWISE SPECIFIED:		APPD: KEITH ZHU 19NOV2010	PRODUCT SPEC: 108-104004 APPLICATION SPEC:
0 PLC ±	1 PLC ±	2 PLC ±0.25	NAME: 2X2 MAG45(TM), 10/100 CIRCUIT WAVE PANEL, GROUND SHIELD, W/ LED SIZE: CAGE CODE: DRAWING NO: A1 - ©=1840865 WEIGHT: - MATERIAL: - FINISH: -
MATERIAL:		RESTRICTED TO:	SCALE: 5:1 SHEET 1 OF 4 REV C CUSTOMER DRAWING



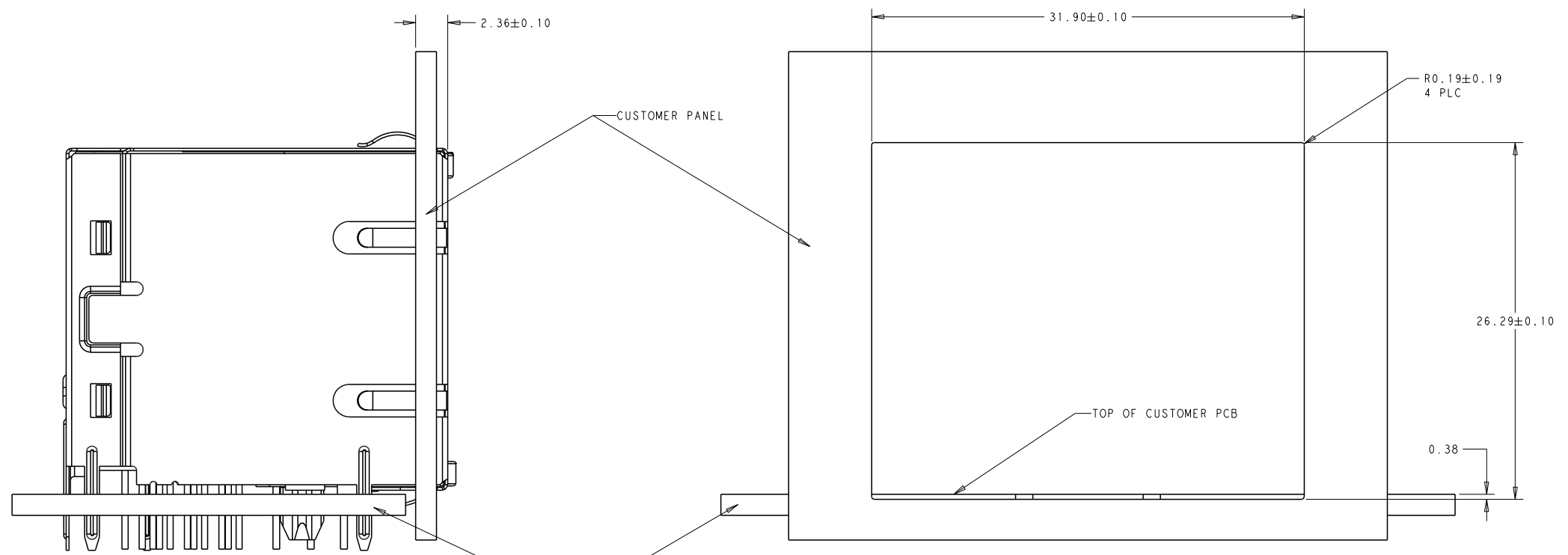
THIS DRAWING IS A CONTROLLED DOCUMENT.		DRW: TOM_HSU 19NOV2010	 TRP connector Dongguan China
		CHK: TONY_YUAN 19NOV2010	
		APRD: KEITH_ZHU 19NOV2010	
DIMENSIONS: mm		TOLERANCES UNLESS OTHERWISE SPECIFIED: 0 PLC ± 1 PLC ± 2 PLC ±0.25 3 PLC ± 4 PLC ± ANGLES ±	PRODUCT SPEC NAME: 2X2 MAG45(TM), 10/100 CIRCUIT WAVE PANEL, GROUND SHIELD, W/ LED APPLICATION SPEC 108-104004
MATERIAL:		FINISH:	WEIGHT:
		CUSTOMER DRAWING	SIZE: A1 CASE CODE: C=1840865 DRAWING NO: 1840865 RESTRICTED TO:
		SCALE: 5:1	SHEET 2 OF 4 REV C



RECOMMENDED PCB FRONT EDGE CUTOUT:
THE BOTTOM SHIELD GROUND TABS(FRONT)
SHOULD NOT BE SEATED ON THE TOP OF THE PCB



DETAIL A
SCALE 8:1

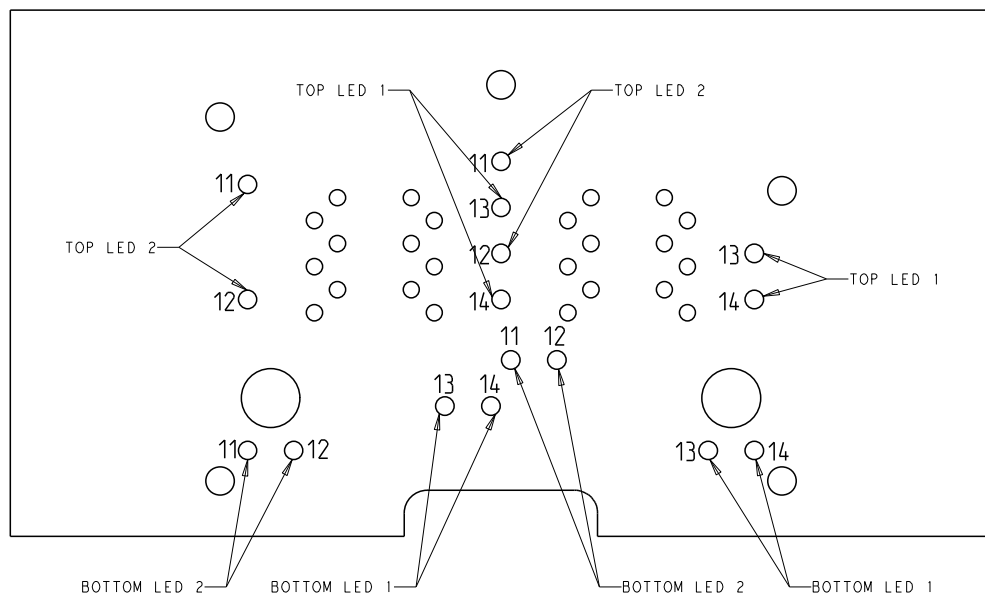


SUGGESTED PANEL CUTOUT DIMENSIONS

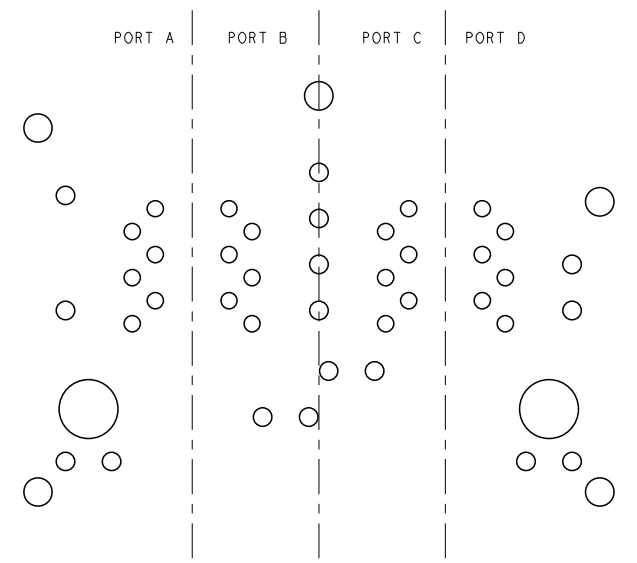
SHOWN WITH PANEL AND
CUSTOMER PCB ASSEMBLY

CUSTOMER PCB

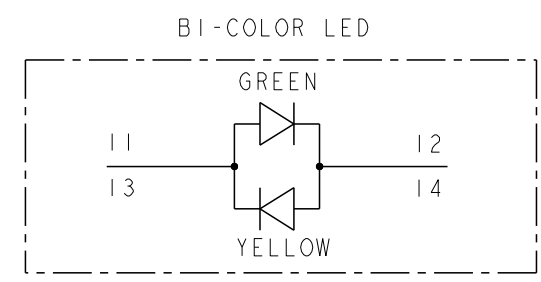
THIS DRAWING IS A CONTROLLED DOCUMENT.		DWN: TOM HSU 19NOV2010 CHK: TONY YUAN 19NOV2010 APD: KEITH ZHU 19NOV2010	TRP connector Dongguan China
DIMENSIONS: mm	TOLERANCES UNLESS OTHERWISE SPECIFIED: 0 PLC ± 1 PLC ± 2 PLC ±0.25 3 PLC ± 4 PLC ± ANGLES ± FINISH	PRODUCT SPEC 108-104004 APPLICATION SPEC	
MATERIAL:		WEIGHT:	RESTRICTED TO:
		CUSTOMER DRAWING	SCALE: 5:1 SHEET 3 OF 4 REV C




LED HOLE DESIGNATIONS
 VIEWED FROM COMPONENT SIDE



PORT DESIGNATIONS
 VIEWED FROM COMPONENT SIDE



THIS DRAWING IS A CONTROLLED DOCUMENT.		DRW: TOM_HSU 19NOV2010	 TRP connector Dongguan China
DIMENSIONS: mm		CHK: TONY_YUAN 19NOV2010	
TOLERANCES UNLESS OTHERWISE SPECIFIED:		APPD: KEITH_ZHU 19NOV2010	NAME: 2X2 MAG45(TM), 10/100 CIRCUIT WAVE PANEL, GROUND SHIELD, W/ LED
0 PLC ±	1 PLC ±	PRODUCT SPEC 108-104004	SIZE: A1
2 PLC ±0.25	3 PLC ±	APPLICATION SPEC	CAGE CODE: -
4 PLC ±	ANGLES ±	WEIGHT: -	DRAWING NO: C=1840865
MATERIAL: -	FINISH: -	CUSTOMER DRAWING	RESTRICTED TO: -
SCALE: 5:1		SHEET 4 OF 4 REV C	