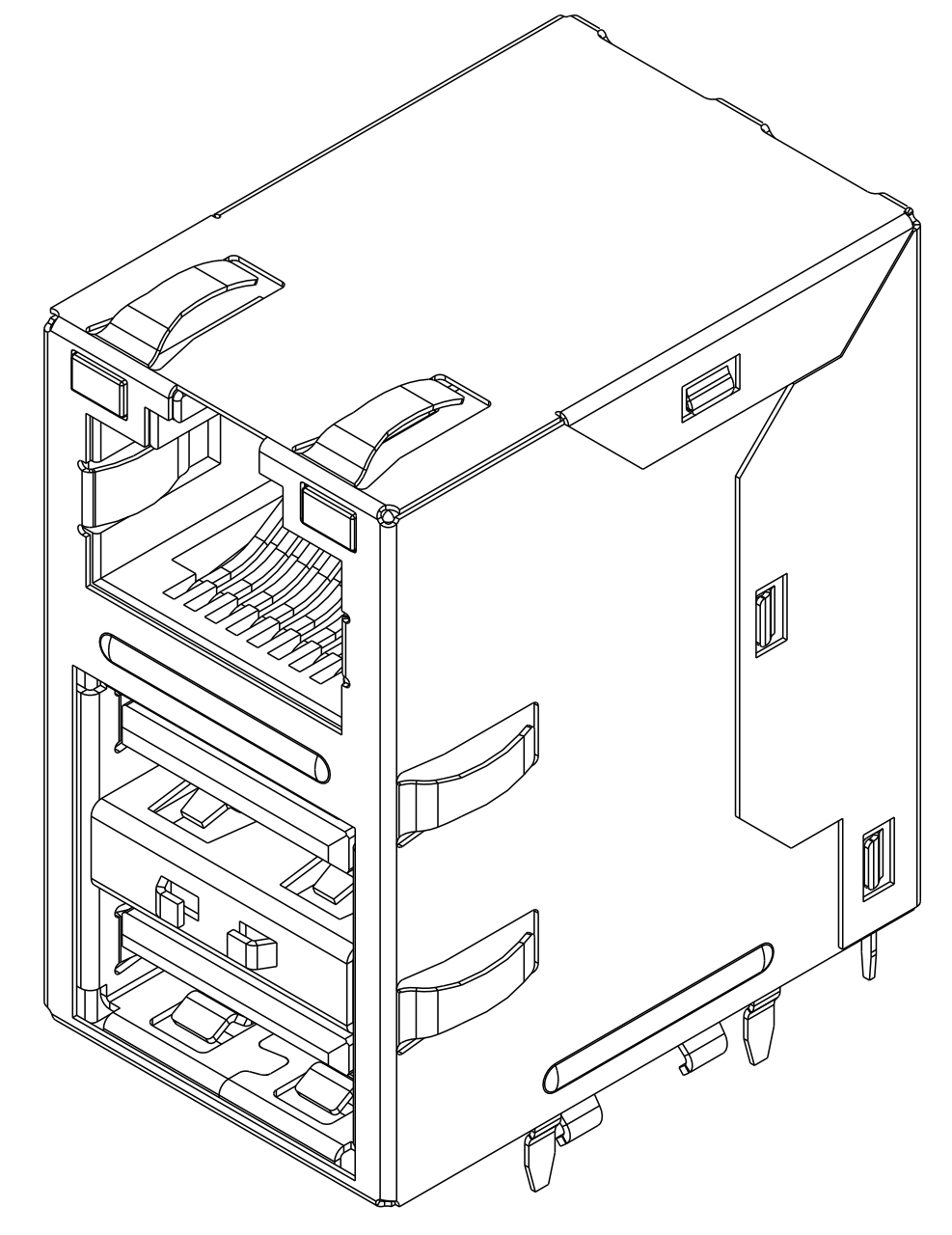
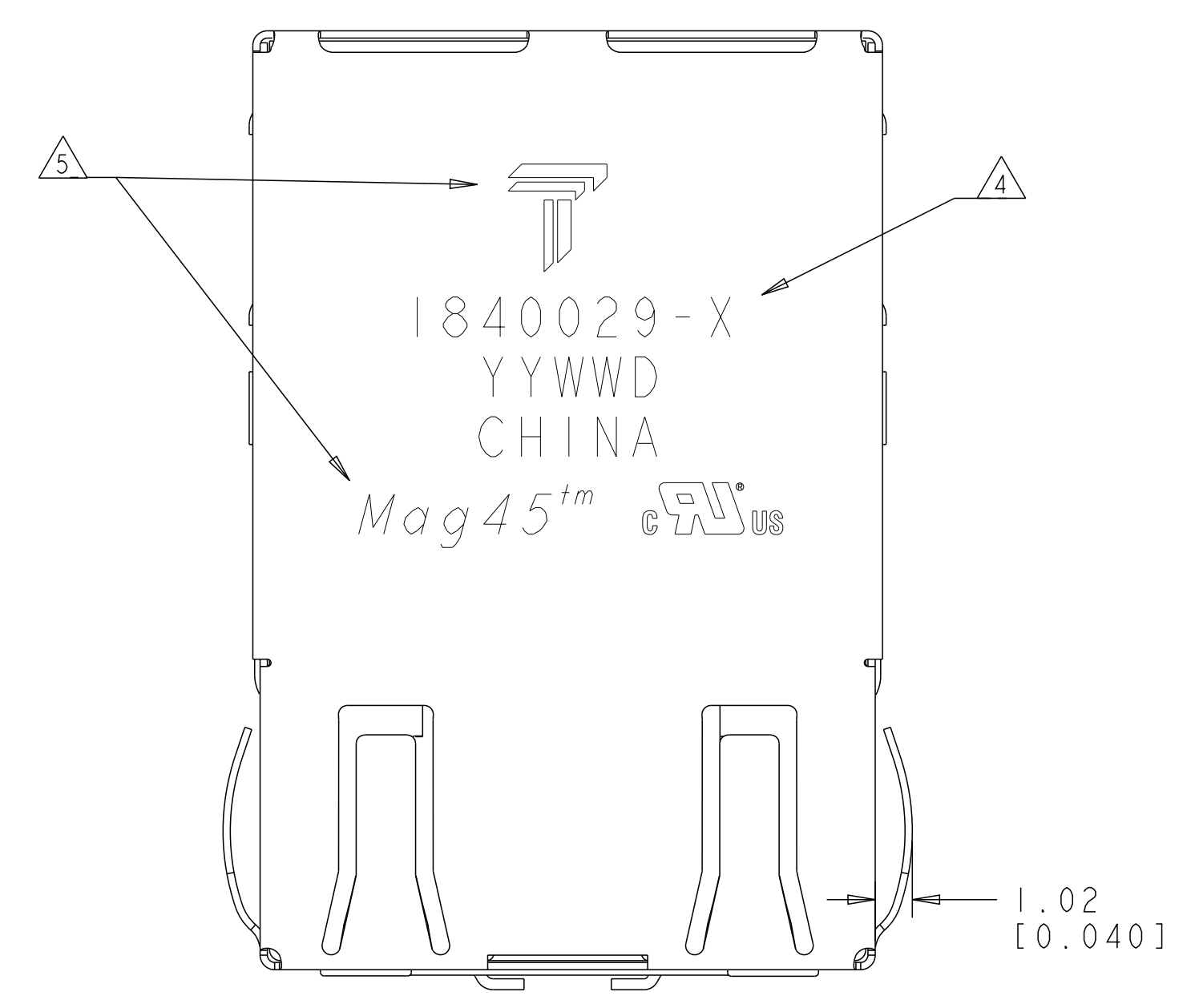


REVISIONS				
P	LTN	DESCRIPTION	DATE	APPV
C		LOGO CHANGE	07APR2013	PP KZ



SCALE 4:1

- △ USB MATERIALS:  
 SHELL: PHOSPHOR BRONZE  
 HOUSING: BLACK, THERMOPLASTIC, GLASS FILLED, UL 94V-0 RATED  
 CONTACT: PHOSPHOR BRONZE WITH SELECTIVE 0.76um MIN GOLD PLATING  
 SPRING CLIP: PHOSPHOR BRONZE
- RJ45 MATERIALS:  
 HOUSING: BLACK, THERMOPLASTIC FLAMMABILITY RATING UL 94V-0  
 SHIELD: BRASS, PREPLATED WITH 0.76um SEMI-BRIGHT NICKEL,  
 POST DIPPED WITH 2.54um MIN SAC SOLDER ON SOLDER TAILS.  
 CONTACTS: PHOSPHOR BRONZE, 0.30mm THK, 1.27um MIN OVERALL NICKEL  
 UNDERPLATE WITH SELECT 1.27um MIN GOLD AT MATING INTERFACE  
 AND 2.54um MIN MATTE TIN AND/OR SAC SOLDER ON SOLDER TAILS.
- LED: DIFFUSED EPOXY LENS, 0.5 X 0.5 CARBON STEEL WIREFRAME  
 LEADS PREPLATED WITH 2.03um MIN SILVER OVER 1.02um MIN NICKEL  
 UNDERPLATE OVER 1.02um COPPER UNDERPLATE. POST-PLATED WITH  
 2.54um MIN MATTE TIN AND/OR SAC SOLDER DIP OR PURE TIN SOLDER DIP.

- △ MAGNETICS  
 -APPLICATION : 10/100/1000 BASE-T  
 -IMPEDANCE: 100 OHMS  
 -TURNS RATIO(CHIP:CABLE): 1:1 ALL FOUR PAIRS  
 -OPEN CIRCUIT INDUCTANCE(OCL): 350uH MIN @100kHz, 0.1 VRMS,  
 8mADC BIAS FROM 0°C TO 70°C, ALL FOUR PAIRS  
 -RISE TIME (10%-90%): 2.5ns TYPICAL;  
 -ALL FOUR PAIRS BI-DIRECTIONAL  
 -PERFORMANCE @ 25°C:  
 INSERTION LOSS (IL): 1.1 dB MAX FROM 0.5MHz TO 100MHz  
 RETURN LOSS (RL): 18dB MIN FROM 0.5MHz TO 40MHz  
 12-20LOG(f/80)dB MIN FROM 40.1 MHz TO 100MHz  
 CROSSTALK ATTENUATION: 35 dB MIN FROM 0.5 MHz TO 40 MHz  
 33-20LOG(f/50) dB MIN FROM 40.1 MHz TO 100 MHz  
 COMMON MODE REJECTION RATIO (CMRR): 30dB MIN FROM 0.5MHz TO 100MHz  
 -ISOLATION VOLTAGE: COMPLIES WITH IEEE802.3 2002, PARA 40.6.1.1, ITEM b.

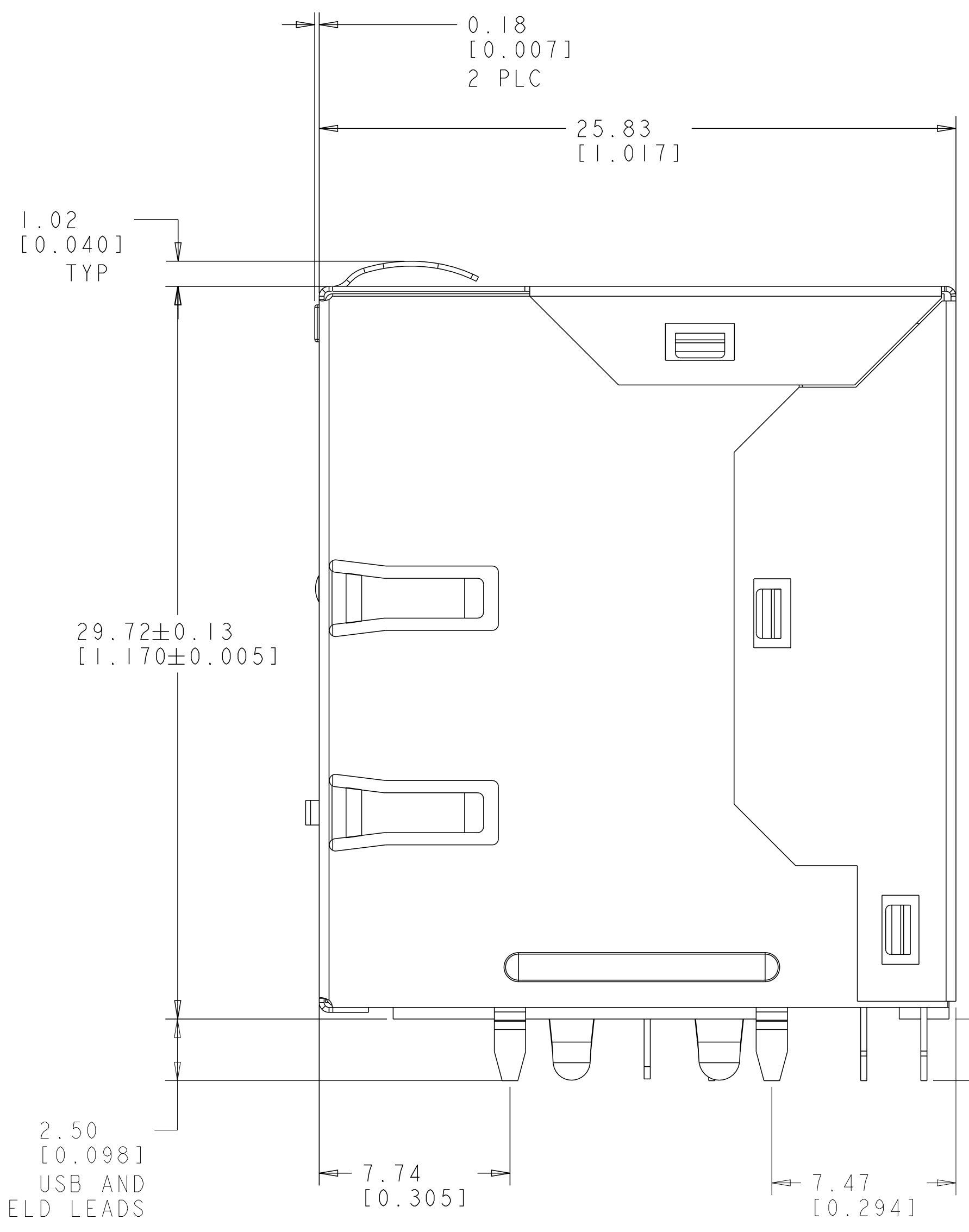
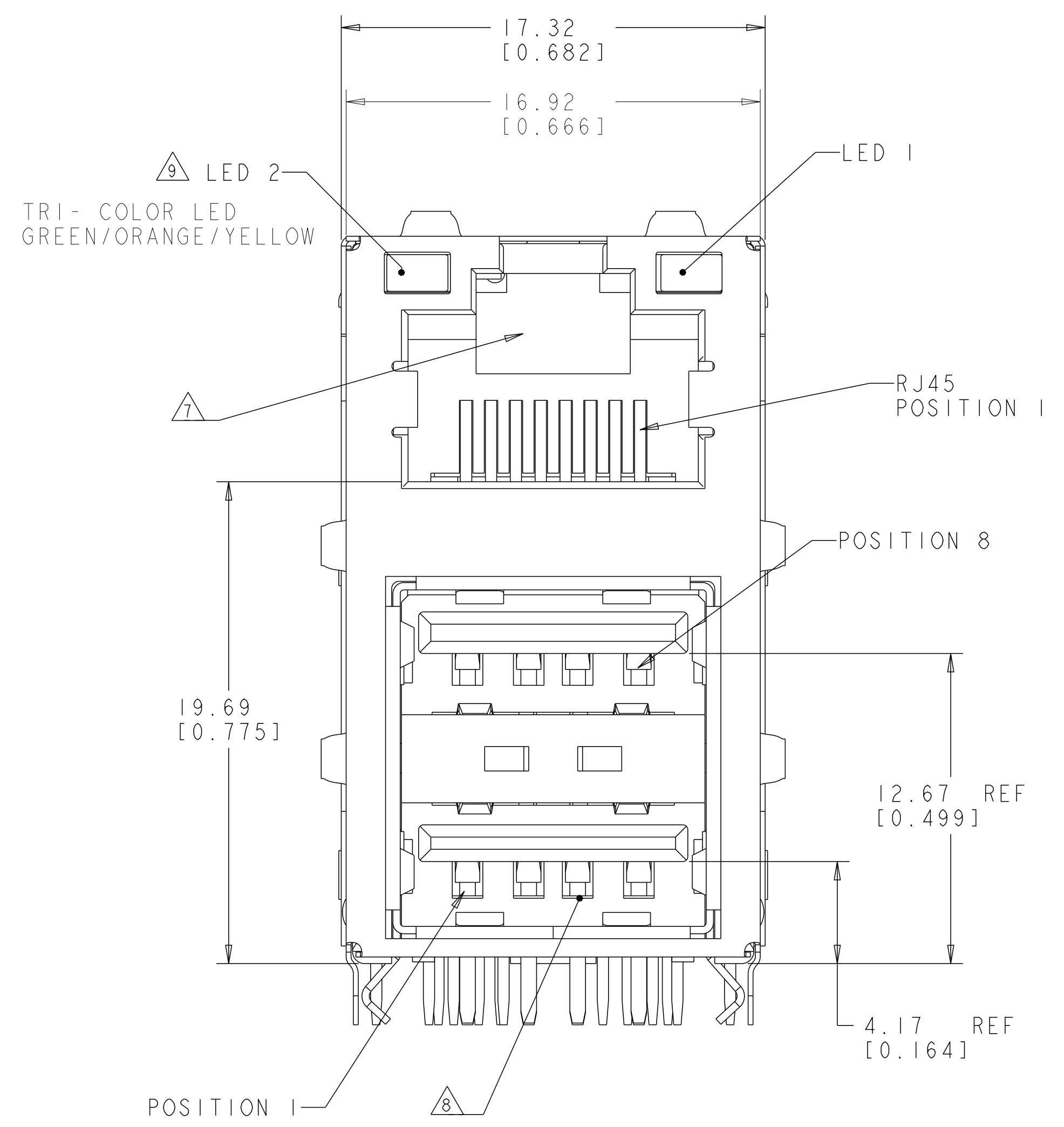
- 3. OPERATING TEMPERATURE: 0°C TO + 70°C.
- △ PART NUMBER, DATE CODE AND COUNTRY OF ORIGIN TO BE LOCATED IN APPROXIMATE AREA SHOWN. DATE CODE: YYWD "YY" IS YEAR, "WW" IS WORK WEEK, "D" IS DAY OF WEEK, WITH SUNDAY=1.

- △ AGENCY APPROVAL LOGO, TRP CONNECTOR LOGO AND PRODUCT LOGO LOCATED IN APPROXIMATE AREA SHOWN.
- △ RECOMMENDED PCB THICKNESS 1.5mm (.062") THICK. DATUM LOCATION AND DIMENSION TO BE ESTABLISHED BY CUSTOMER.

- △ RJ45 CAVITY CONFORMS TO FCC RULES AND REGULATION PART 68 SUBPART F.
- △ MATING INTERFACE COMPLIES WITH USB (UNIVERSAL SERIAL BUS) SPECIFICATION REV 2.0.

- △ LED 2 WILL EMULATE "YELLOW" LIGHT WHEN USB BOTH GREEN AND ORANGE DIODES ARE DRIVEN AT CONSTANT CURRENT (20mA RECOMMENDED) TO INDICATE THE THIRD COLOR STATE.

- 10. THESE PARTS ARE RECOMMENDED FOR WAVE SOLDERING PROCESS, PREHEAT TEMPERATURE IS 120°C TO 160°C, 120 SECONDS TO 180 SECONDS, PEAK WAVE SOLDERING TEMPERATURE IS 260°C MAX, 10 SECONDS MAX.

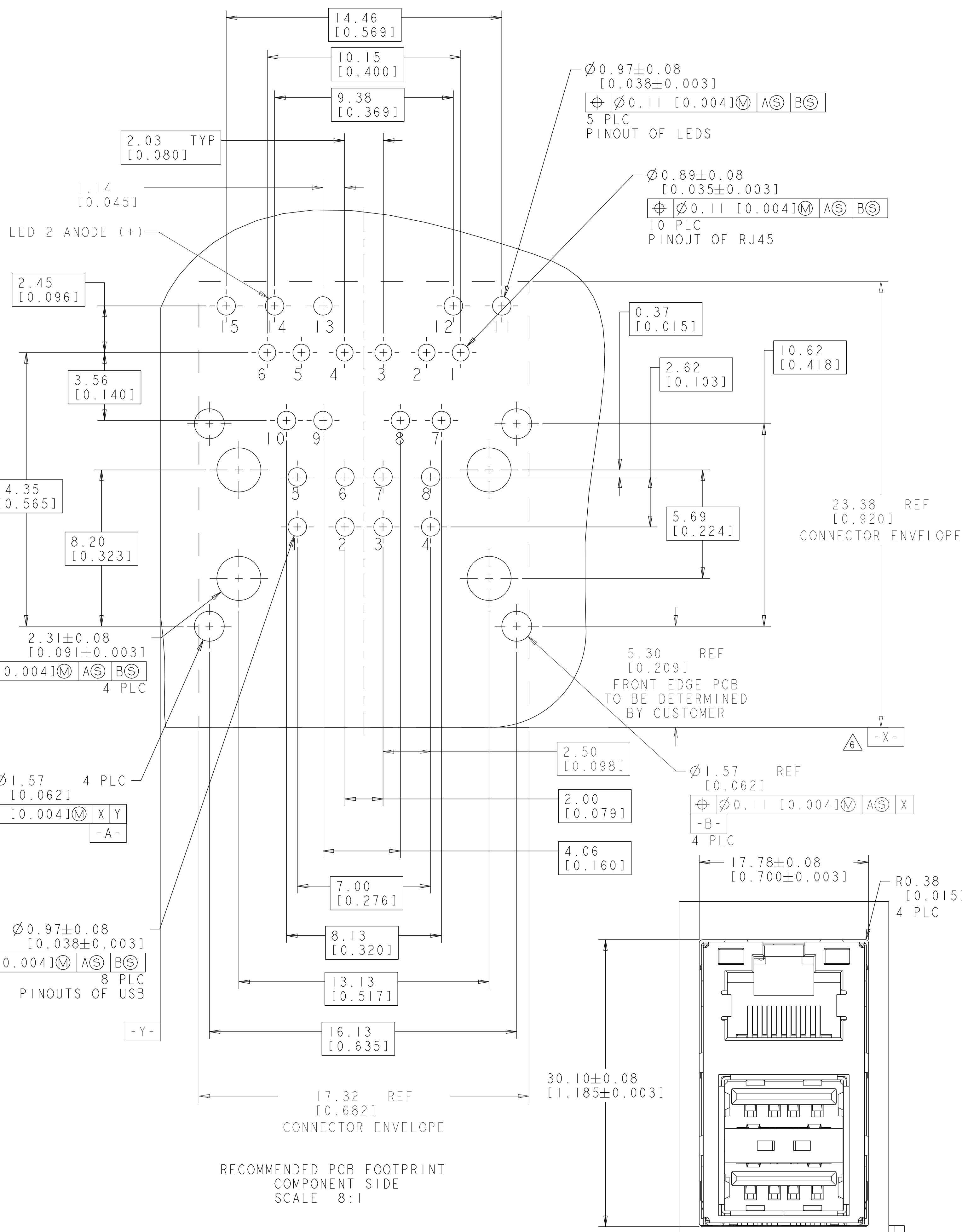


2.50 [0.098]  
 USB AND SHIELD LEADS

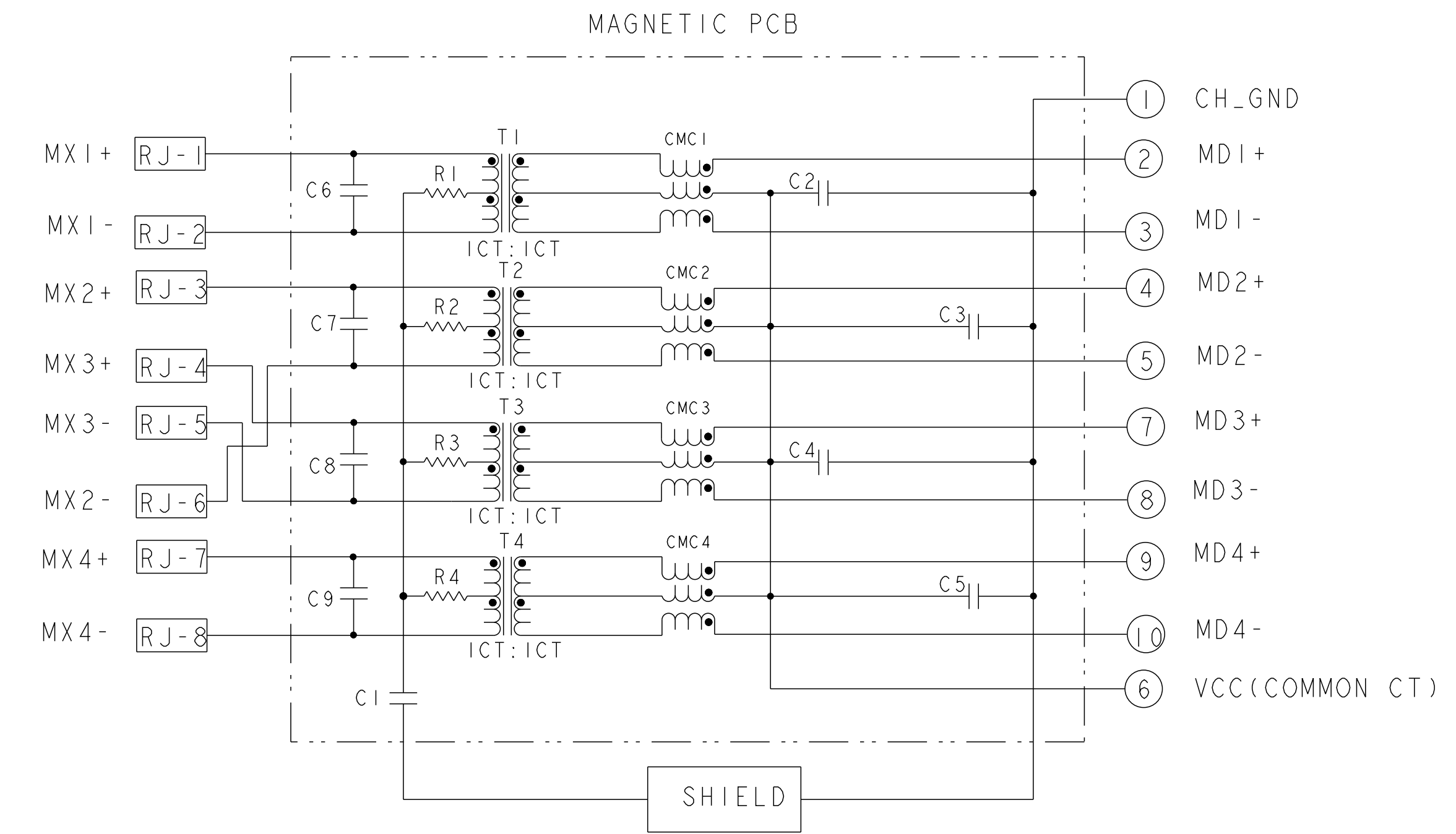
2.50 [0.098]  
 RJ45 AND LED LEADS

GREEN	1840029-2
YELLOW	1840029-1
LED 1	PART NUMBER

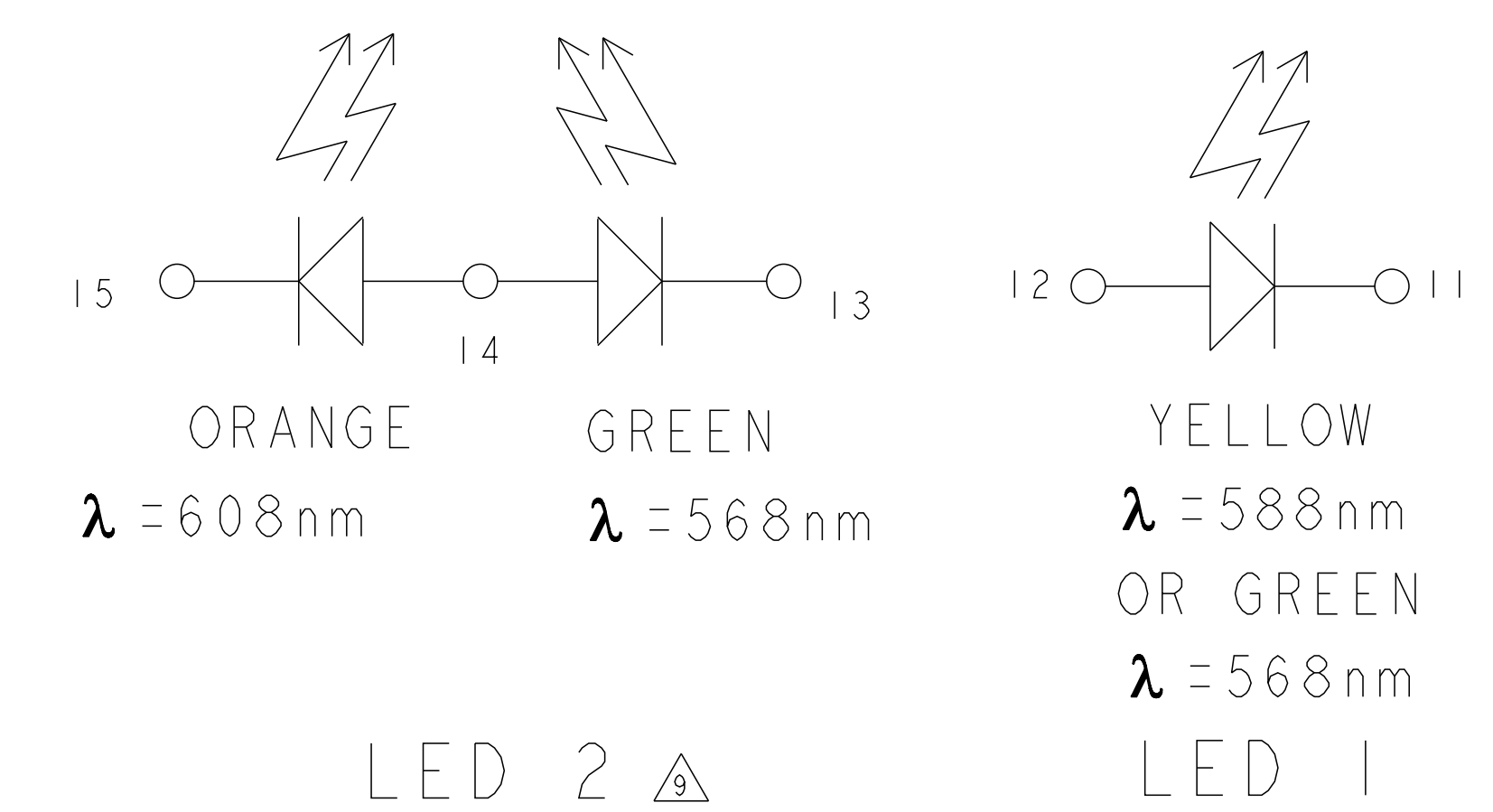
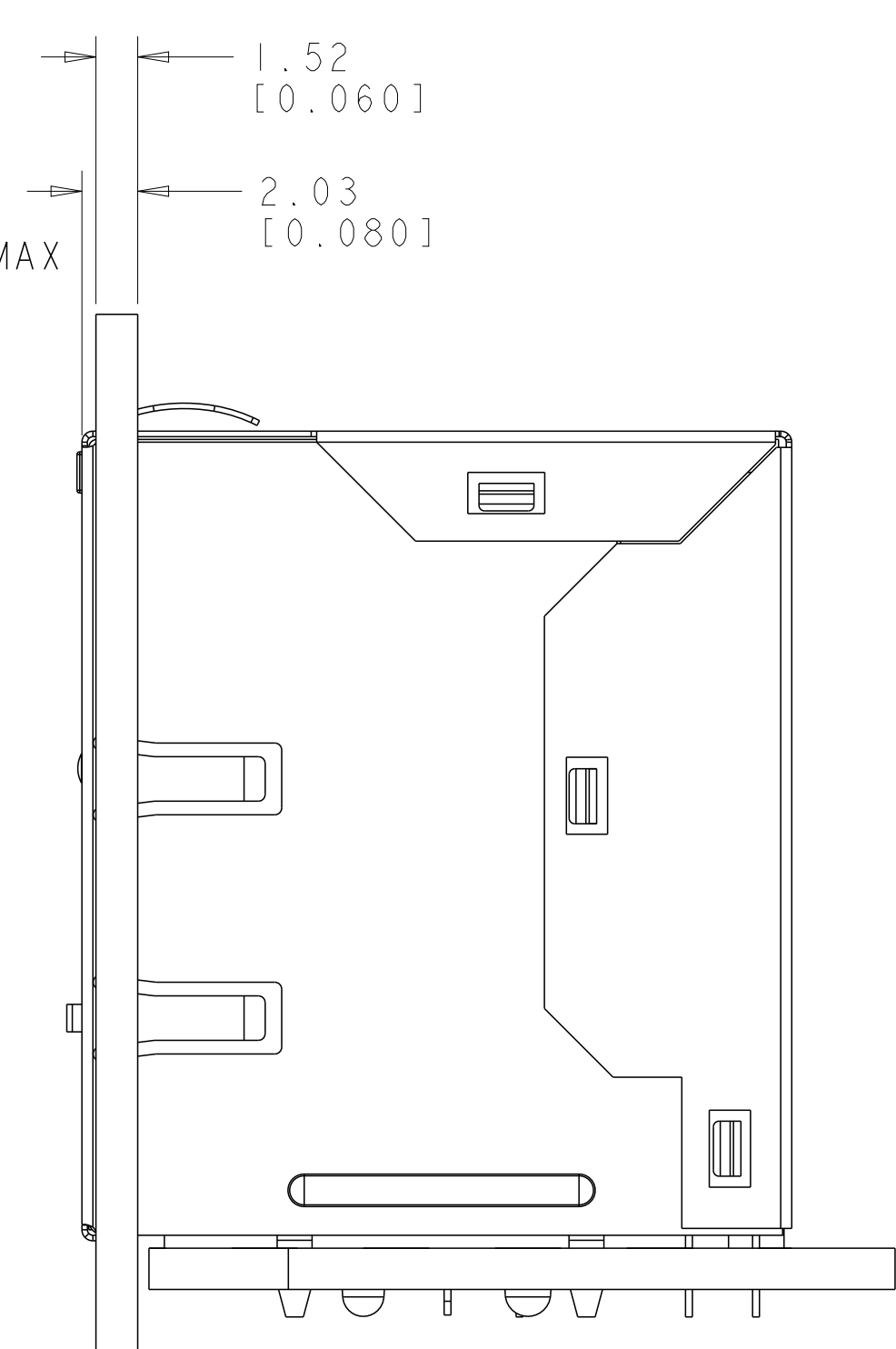
THIS DRAWING IS A CONTROLLED DOCUMENT.		OWN: PETE LI 31JUL2008		TRP connector Dongguan China	
DIMENSIONS: mm		CHK: KEITH ZHU 31JUL2008		PRODUCT SPEC	NAME: RJ45 OVER DUAL USB MAG45 TM GIGABIT UR2G14 CIRCUIT, W/LED
TOLERANCES UNLESS OTHERWISE SPECIFIED:		APPV: TEDDY XIONG 31JUL2008		108-104005	APPLICATION SPEC
0 PLC ±0.25 1 PLC ±0.25 2 PLC ±0.25 3 PLC ±0.25 4 PLC ±0.25 ANGLES ±0.5					
MATERIAL: △	FINISH: △	WEIGHT: -	SIZE: A1	RESTRICTED TO	
CUSTOMER DRAWING		SCALE: 3:1	SHEET: 1	REV: C	



### UR2G14 GIGABIT CIRCUIT



R1-R4 = 75OHMS, 1/16W, 5%  
 C1 = 1000pF, 3kV, ±10%, X7R  
 C2-C5 = 0.01uF, 50V, 10%, X7R  
 C6-C9 = 3.3pF, 50V, 10%, NPO



SUGGESTED PANEL CUTOUT DIMENSIONS  
 SCALE 4:1

RECOMMENDED PCB FOOTPRINT  
 COMPONENT SIDE  
 SCALE 8:1

THIS DRAWING IS A CONTROLLED DOCUMENT.		OWN: PETE LI 31JUL2008	TRP connector Dongguan China
DIMENSIONS: mm		CHK: KEITH ZHU 31JUL2008	
TOLERANCES UNLESS OTHERWISE SPECIFIED:		APP'D: TEDDY YIANG 31JUL2008	NAME: RJ45 OVER DUAL USB MAG45 TM GIGABIT UR2G14 CIRCUIT, W/LED
0 PLC ±0.25 1 PLC ±0.25 2 PLC ±0.25 3 PLC ±0.25 4 PLC ±0.25 ANGLES ±0.5		PRODUCT SPEC: 108-104005	
MATERIAL:		FINISH:	SIZE: A1
WEIGHT: -		CAGE CODE: 1840029	RESTRICTED TO: -
CUSTOMER DRAWING		SCALE: 3:1	SHEET: 2 OF 2