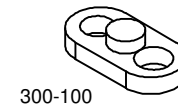
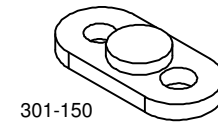
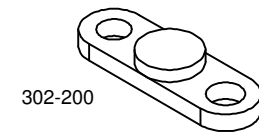
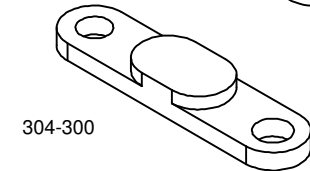
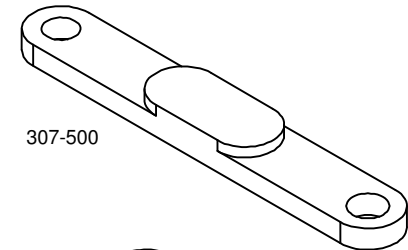
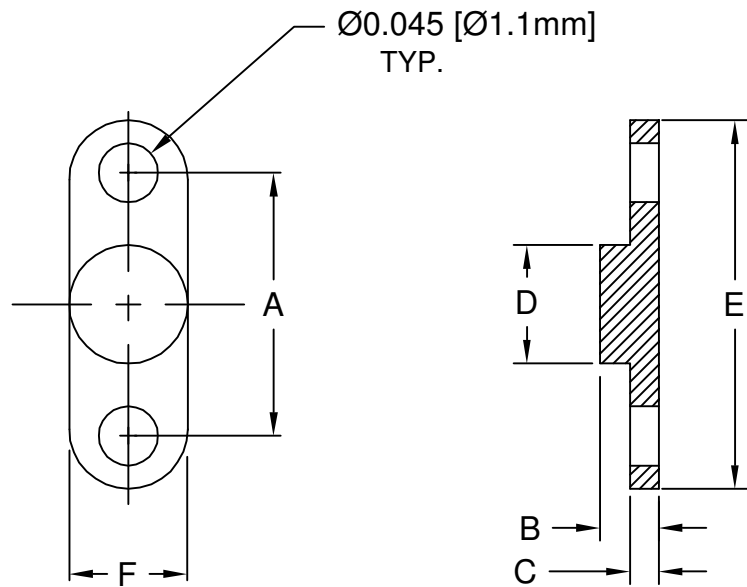


REV.	DESCRIPTION	DATE	APPROVED
A	Engineering Release.	03/07/03	M. C.
B	TYPO Correction.	03/14/03	M. C.
C	Release for Re-Tool.	11/10/03	M. C.
D	Release for Quotation.	02/19/04	M. C.
E	Production Release.	03/26/04	M. C.



PART NO.	A	B	C	D	E	F
300-100-022	.100 (2.5mm)	N.A.	.022 (.55mm)	N.A.	.180 (4.6mm)	.090 (2.3mm)
300-100-030		.030 (.76mm)	.011 (.28mm)	.050 (1.3mm)	.180 (4.6mm)	.090 (2.3mm)
300-100		.045 (1.1mm)	.022 (.55mm)	.050 (1.3mm)		
300-100-075		.075 (1.9mm)	.022 (.55mm)	.055 (1.4mm)		
301-150CS	.150 (3.8mm)	N.A.	.022 (.55mm)	N.A.	.270 (6.9mm)	.125 (3.2mm)
301-150-030		.030 (.76mm)	.011 (.28mm)	.090 (2.3mm)	.270 (6.9mm)	.125 (3.2mm)
301-150-040		.040 (1.0mm)	.022 (.55mm)			
301-150		.045 (1.1mm)	.022 (.55mm)			
301-150 MOD		.045 (1.1mm)	.022 (.55mm)	.090 (2.3mm)	.240 (6.1mm)	.090 (2.3mm)
302-200-030	.200 (5.1mm)	.030 (.76mm)	.011 (.28mm)	.090 (2.3mm)	.290 (7.4mm)	.090 (2.3mm)
302-200-040		.040 (1.0mm)	.022 (.55mm)			
302-200		.045 (1.1mm)	.022 (.55mm)			
303-250	.250 (6.4mm)	.045 (1.1mm)	.026 (.66mm)	.090 (2.3mm)	.340 (8.6mm)	.090 (2.3mm)
304-300	.300 (7.5mm)	.045 (1.1mm)	.026 (.66mm)	.140 (3.6mm)	.390 (9.9mm)	
305-350	.350 (8.9mm)	.045 (1.1mm)	.030 (.76mm)	.140 (3.6mm)	.440 (11.2mm)	
306-400	.400 (10.2mm)	.045 (1.1mm)	.030 (.76mm)	.190 (4.8mm)	.490 (12.4mm)	
307-500	.500 (12.7mm)	.045 (1.1mm)	.030 (.76mm)	.190 (4.8mm)	.590 (15.0mm)	

2. MATERIAL: NYLON 6/6, 94V-2, NATURAL. BIVAR MATERIAL CODE 03-NL.
 BASF ULTRAMID NYLON 6/6 A3K NATURAL.

1. GENERAL SPECIFICATIONS: BIVAR MOLDED COMPONENT SPECIFICATION BV00-E101.

STANDARD TOLERANCE (UNLESS OTHERWISE SPECIFIED)		 4 THOMAS, IRVINE, CA. 92618 TEL: (949) 951-8808 FAX: (949) 951-3974
DECIMALS	ANGULAR	
.X ±.1	X° ±1°	TITLE: CAPACITOR MOUNT, 300 SERIES
.XX ±.01		
.XXX ±.005		
DESIGNED: Michael Chen	DATE: 03/07/03	PART NO: 30X-XXX-XXX
CHECKED: D. Green	DATE: 03/07/03	
		REVISION: E
		CAGE CODE : 32559 SHEET # 1 OF 1
CAD GENERATED DOCUMENT, DO NOT MEASURE DRAWING.		