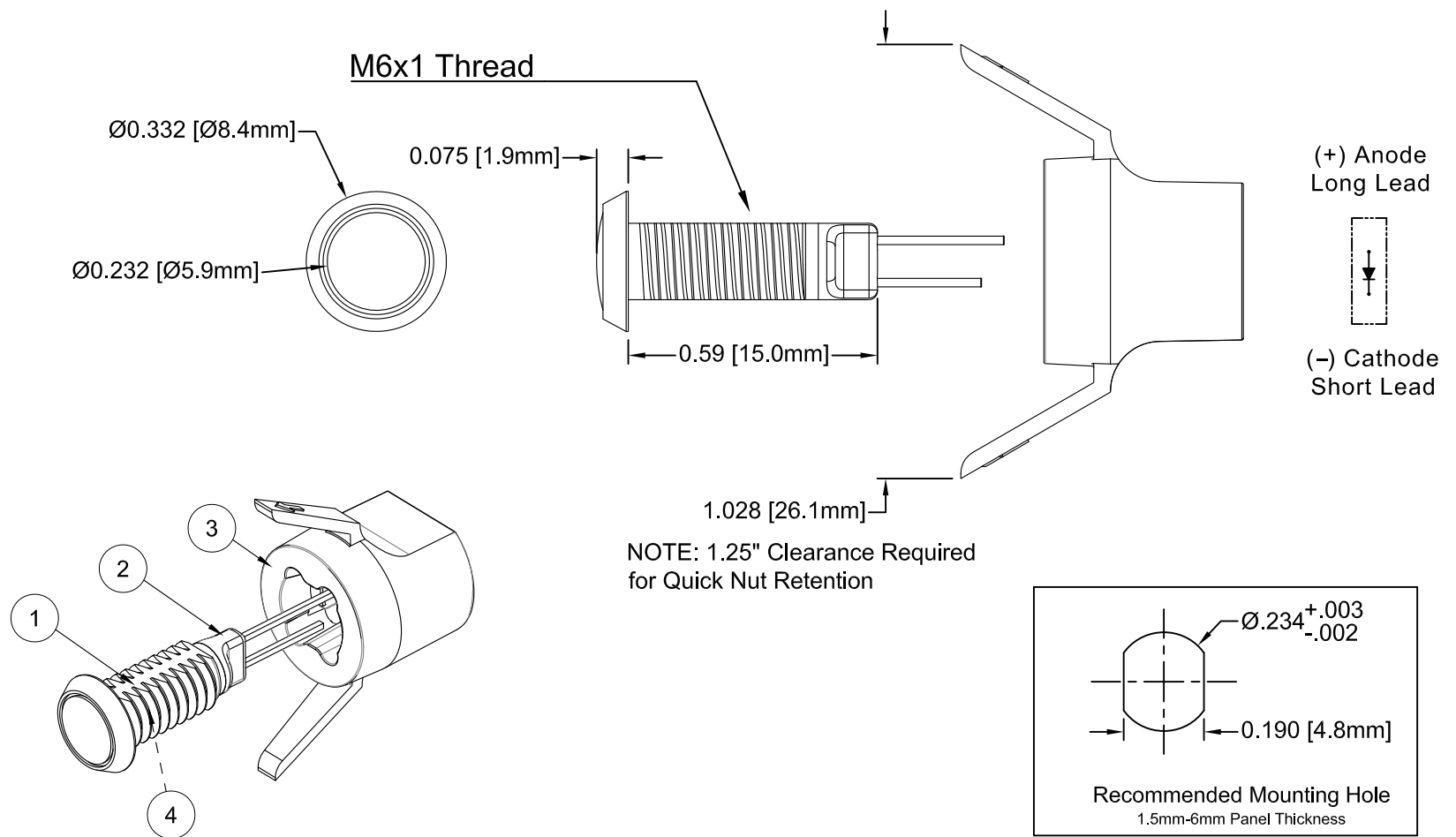


ITEM	Q'TY	PART NUMBER	PART DESCRIPTION
1	1	PM3-PL	3mm Polycarbonate Panel Mount Housing
2	1	PM3-HL	3mm Panel Mount Plug
3	1	PM3-KN	3mm Quick Nut
4	1	3XX-S	3mm LED, SEE SHEET #2

REV.	DESCRIPTION	DATE	APPROVED
A	Engineering Release	04/12/12	T. Y.



- NOTES:**
1. TO INSTALL, INSERT HOLDER THROUGH PANEL AND PRESS QUICK NUT ON TO HOLDER AS SHOWN. TABS WILL DEFORM FOR RETENTION
 2. ROHS COMPLIANT
 3. MOUNTING HARDWARE SHIPPED NON-ASSEMBLED
 4. TO REMOVE, TWIST QUICK NUT 90° AND PULL

STANDARD TOLERANCE (UNLESS OTHERWISE SPECIFIED)		BIVAR [®] 4 THOMAS, IRVINE, CA. 92618 TEL: (949) 951-8808 FAX: (949) 951-3974			
DECIMALS	ANGULAR				
.X ±.1	X° ± 1°	TITLE: Quick-Mount Panel Mount Indicator			
.XX ±.02					
.XXX ±.010		DESIGNED: Ty Yin	DATE: 04/12/12	PART NO: PM3-KXXX	REVISION: A
CHECKED: B. Oliver	DATE: 04/12/12	CAGE CODE : 32559		SHEET # 1 OF 2	
CAD GENERATED DOCUMENT, DO NOT MEASURE DRAWING.					



REV.	DESCRIPTION	DATE	APPROVED
	SEE SHEET #1		

Assembly Part Number	LED Part Number	Peak Wave Length λ_p (nm)	Emitted Color	Lens Appearance	Electro-Optical Data @ 20mA		Viewing Angle
					Typ Vf (VDC)	LED Iv (mcd)	
					TYP	TYP	
PM3-KAD	3SAD-S	610	AMBER	WHITE DIFFUSED	2.0	100	120
PM3-KBWD	3BWD0.245S	470	BLUE	WHITE DIFFUSED	4.0	200	120
PM3-KGD	3SGD-S	568	GREEN	WHITE DIFFUSED	2.1	30	120
PM3-KHD	3HD-S	625	HE RED	WHITE DIFFUSED	2.0	30	120
PM3-KPGD	3SPGD-S	555	PURE GREEN	WHITE DIFFUSED	2.2	20	120
PM3-KRD	3SRD-S	645	RED	WHITE DIFFUSED	1.7	40	120
PM3-KYD	3SYD-S	585	YELLOW	WHITE DIFFUSED	2.1	30	120

Assembly Part Number	LED Part Number	Color Temperature	Emitted Color	Lens Appearance	Electro-Optical Data @ 20mA		Viewing Angle
					Vf (VDC)	LED Iv (mcd)	
					TYP	TYP	
PM3-KWD	3UWD2.55N	5000K	NEUTRAL WHITE	WHITE DIFFUSED	3.2	2500	120

ABSOLUTE MAXIMUM RATINGS (Ta = 25°C)

MAXIMUM REVERSE VOLTAGE _____ 5V
 MAXIMUM POWER DISSIPATION _____ 150 mW
 OPERATING TEMPERATURE RANGE _____ -30°C ~ 85°C
 STORAGE TEMPERATURE _____ -40°C ~ 85°C

STANDARD TOLERANCE (UNLESS OTHERWISE SPECIFIED)		 4 THOMAS, IRVINE, CA. 92618 TEL: (949) 951-8808 FAX: (949) 951-3974		
DECIMALS	ANGULAR			
		TITLE: Quick-Mount Panel Mount Indicator		
		DESIGNED: Ty Yin	DATE: 04/12/12	PART NO: PM3-KXXX
CHECKED: B. Oliver		DATE: 04/12/12	CAGE CODE : 32559	SHEET # 2 OF 2
CAD GENERATED DOCUMENT, DO NOT MEASURE DRAWING.				