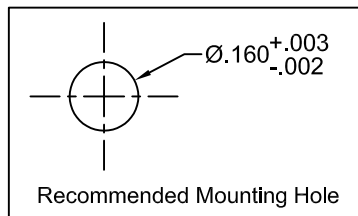
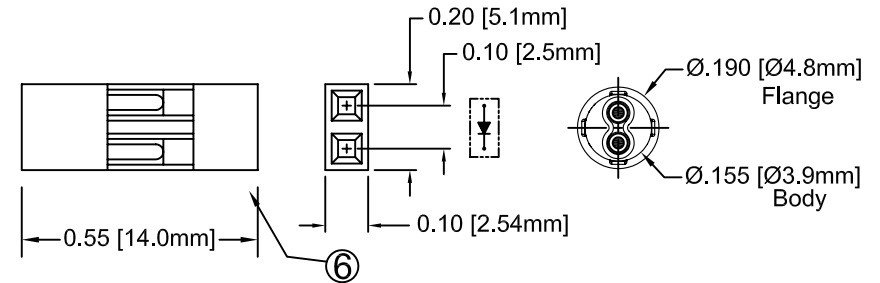
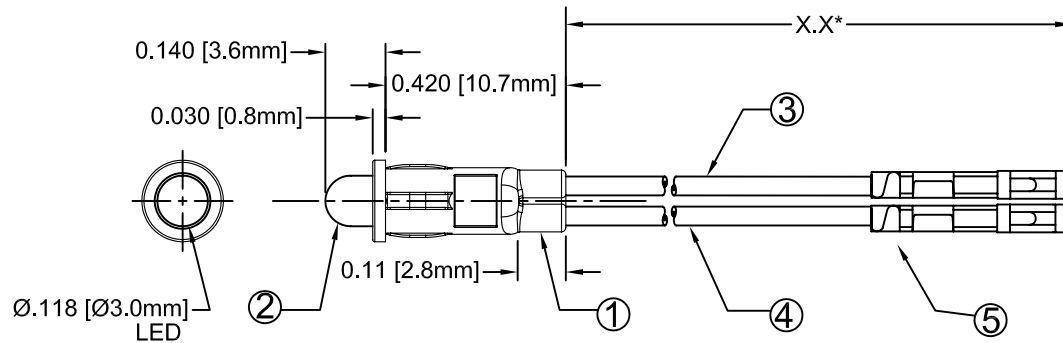


ITEM	Q'TY	PART NUMBER	PART DESCRIPTION
1	1	PM3	LED Holder, Panel Mount, Press Fit, (3mm)
2	1	3XXX	T-1 (3mm) Non-Flange Low Current LED, See Page 2.
3	1	BWS24-1061-RD	24AWG Wire Lead U.L. 1061, Red
4	1	BWS24-1061-BK	24AWG Wire Lead U.L. 1061, Black
5	2	2665S020000	Leoco 2665 Series 2.54mm (100") Crimp Type Socket, 1X
6	1	2653TPB0001	Leoco Terminal# 2653TPB0001 (Reel) 2653TPB00A1(Bulk)

REV.	DESCRIPTION	DATE	APPROVED
A	Engineering Release	04/09/07	M. C.
B	Updated Notes	09/07/07	M. C.
C	Connector Shipped Separate Note Update.	11/08/07	M. C.
D	Added 3YCL LED to Page 3	02/06/08	M. C.

Note: Connector Shipped Non-Assembled in Separate Bag



EXAMPLE:

PM3RDW6.5*-CC
 LED Color & Lens Appearance.
 Wire Length "X"
 Connector
 Series

* X.X = Wire Length "X"


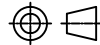
ABSOLUTE MAXIMUM RATINGS (Ta = 25°C)

REVERSE VOLTAGE	5V
REVERSE CURRENT (VR=5V)	100µA
OPERATING TEMPERATURE RANGE	-25°C ~ 85°C
STORAGE TEMPERATURE	-30°C ~ 100°C
LEAD SOLDERING TEMPERATURE (1/16" FROM BODY)	260°C for 5 Seconds

STANDARD TOLERANCE (UNLESS OTHERWISE SPECIFIED)		 4 THOMAS, IRVINE, CA. 92618 TEL: (949) 951-8808 FAX: (949) 951-3974	
DECIMALS	ANGULAR		
.X ±.1	X° ± 1°		
.XX ±.02		 TITLE: T-1 (3mm) PANEL MOUNT ASSEMBLY	
.XXX ±.010			
DESIGNED: Dan Beckman	DATE: 04/09/07	PART NO: PM3XXXWX.X-CC	REVISION: D
CHECKED: T. Yin	DATE: 04/09/07	CAGE CODE : 32559	SHEET # 1 OF 3
CAD GENERATED DOCUMENT, DO NOT MEASURE DRAWING.			


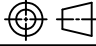
REV.	DESCRIPTION	DATE	APPROVED
	SEE SHEET#1.		

LED Assy. No.	Peak Wave Length λ_p (nm)	Emitted Color	Lens Appearance	Electro-Optical Data @ 20mA				Viewing Angle 2 θ 1/2 (Deg)	LED P/N
				If (mA)	Vf (V)		Iv (mcd)		
					TYP	TYP			
PM3BWCWX.X-CC	430	BLUE	WATER CLEAR	25	4.0	4.5	50	30	3BWC
PM3BWDWX.X-CC	430	BLUE	DIFFUSED	25	4.0	4.5	20	45	3BWD
PM3BWTWX.X-CC	430	BLUE	TINTED	25	4.0	4.5	50	30	3BWT
PM3UBWC.6KWX.X-CC	466	BLUE	WATER CLEAR	50	3.5	4.5	600	20	3UBWC-0.6K
PM3GCWX.X-CC	565	GREEN	WATER CLEAR	30	2.2	2.6	65	30	3GC
PM3GDWX.X-CC	565	GREEN	DIFFUSED	30	2.2	2.6	30	45	3GD
PM3GTWX.X-CC	565	GREEN	TINTED	30	2.2	2.6	65	30	3GT
PM3SGCWX.X-CC	568	GREEN	WATER CLEAR	30	2.2	2.6	120	30	3SGC
PM3SGDWX.X-CC	568	GREEN	DIFFUSED	30	2.2	2.6	55	45	3SGD
PM3SGTWX.X-CC	568	GREEN	TINTED	30	2.2	2.6	120	30	3SGT
PM3YCWX.X-CC	585	YELLOW	WATER CLEAR	30	2.1	2.6	55	30	3YC
PM3YDWX.X-CC	585	YELLOW	DIFFUSED	30	2.1	2.6	20	45	3YD
PM3YTWX.X-CC	585	YELLOW	TINTED	30	2.1	2.6	55	30	3YT
PM3ACWX.X-CC	610	AMBER	WATER CLEAR	30	2.2	2.6	65	30	3AC
PM3ADWX.X-CC	610	AMBER	DIFFUSED	30	2.2	2.6	30	45	3AD
PM3ATWX.X-CC	610	AMBER	TINTED	30	2.2	2.6	65	30	3AT
PM3HCWX.X-CC	635	HE RED	WATER CLEAR	30	2.0	2.6	100	30	3HC
PM3HDWX.X-CC	635	HE RED	DIFFUSED	30	2.0	2.6	30	45	3HD
PM3HTWX.X-CC	635	HE RED	TINTED	30	2.0	2.6	100	30	3HT
PM3RCWX.X-CC	655	RED	WATER CLEAR	40	1.7	2.0	18	30	3RC
PM3RDWX.X-CC	655	RED	DIFFUSED	40	1.7	2.0	6	45	3RD
PM3RTWX.X-CC	655	RED	TINTED	40	1.7	2.0	18	30	3RT
PM3SRCWX.X-CC	660	SUPER RED	WATER CLEAR	20	1.7	2.6	250	30	3SRC
PM3SRDWX.X-CC	660	SUPER RED	DIFFUSED	20	1.7	2.6	90	45	3SRD
PM3SRTWX.X-CC	660	SUPER RED	TINTED	20	1.7	2.6	250	30	3SRT
PM3UWC0.6KWX.X-CC	X=.29 Y=.30	WHITE	WATER CLEAR	50	3.5	4.5	600	20	3UWC-0.6K
PM3BCWX.X-CC	635	HE RED	WHITE DIFFUSED	45	2.0	2.6	30	45	3BC
	568	GREEN		30	2.2	2.6	30		

STANDARD TOLERANCE (UNLESS OTHERWISE SPECIFIED) $\pm 10\%$ ALL VALUES		 BIVAR [®] 4 THOMAS, IRVINE, CA. 92618 TEL: (949) 951-8808 FAX: (949) 951-3974	
ANGULAR X° \pm 5°			
		TITLE: T-1 (3mm) PANEL MOUNT ASSEMBLY	
		DESIGNED: Dan Beckman	DATE: 04/09/07
CHECKED: T. Yin		DATE: 04/09/07	CAGE CODE : 32559 SHEET # 2 OF 3
CAD GENERATED DOCUMENT, DO NOT MEASURE DRAWING.			

REV.	DESCRIPTION	DATE	APPROVED
	SEE SHEET#1.		

LED Part No.	Chip			Lens Appearance	Absolute Max. Ratings				Electro-Optical Data @ 2mA			Viewing Angle 2 θ 1/2 (Deg)	LED Part NUMBER
	Material	Peak Wave Length λ_p (nm)	Emitted Color		$\Delta\lambda$ (nm)	Pd (mW)	If (mA)	Peak If (mA)	Vf (V)		Iv (mcd)		
									TYP	MAX	TYP		
PM3BVDLWX.X-CC	GaN/siC	430	BLUE	DIFFUSED	65	10	5	-	3.5	4.0	6.0	45	3BVDL
PM3GDLWX.X-CC	GaP/GaP	565	GREEN	DIFFUSED	30	10	5	-	1.9	2.2	6.0	45	3GDL
PM3PGDLWX.X-CC	GaP/GaP	585	PURE GREEN	DIFFUSED	25	10	5	-	1.9	2.2	4.0	45	3PGDL
PM3YDLWX.X-CC	GaAsP/GaP	585	YELLOW	DIFFUSED	35	10	5	-	1.9	2.2	4.0	45	3YDL
PM3ADLWX.X-CC	GaAsP/GaP	610	AMBER	DIFFUSED	35	10	5	-	1.9	2.2	6.0	45	3ADL
PM3HDLWX.X-CC	GaAsP/GaP	635	HE RED	DIFFUSED	45	10	5	-	1.8	2.2	6.0	45	3HDL
PM3RDLWX.X-CC	GaAsP/GaP	655	RED	DIFFUSED	40	10	5	-	1.9	2.2	1.0	45	3RDL
PM3YCLWX.X-CC	GaAsP/GaP	585	YELLOW	WATER CLEAR	35	10	5	-	1.9	2.2	8.0	45	3YCL

STANDARD TOLERANCE (UNLESS OTHERWISE SPECIFIED) $\pm 10\%$ ALL VALUES		 BIVAR [®] 4 THOMAS, IRVINE, CA. 92618 TEL: (949) 951-8808 FAX: (949) 951-3974	
ANGULAR X° \pm 5°			
		TITLE: T-1 (3mm) PANEL MOUNT ASSEMBLY	
		DESIGNED: Dan Beckman	DATE: 04/09/07
CHECKED: T. Yin		DATE: 04/09/07	CAGE CODE : 32559 SHEET # 3 OF 3
CAD GENERATED DOCUMENT, DO NOT MEASURE DRAWING.			