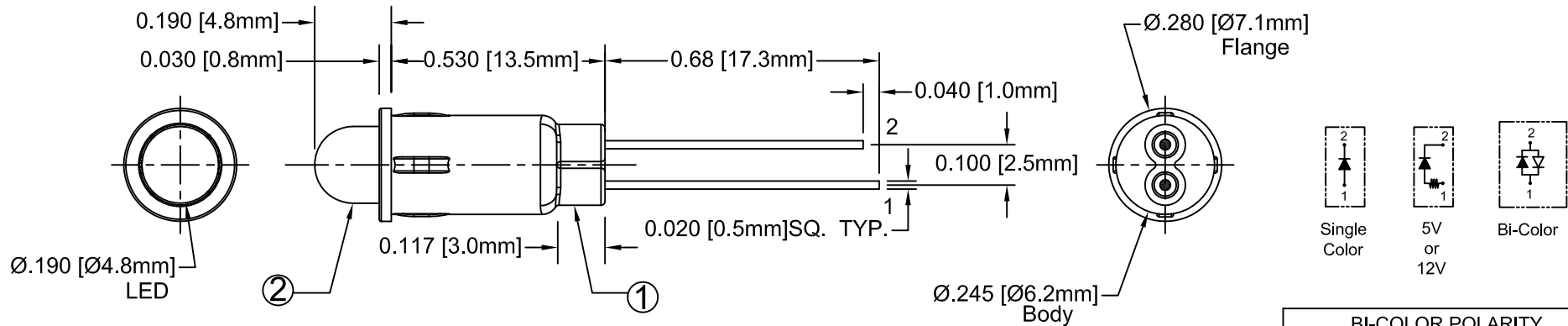
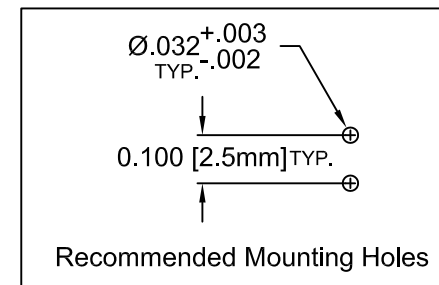
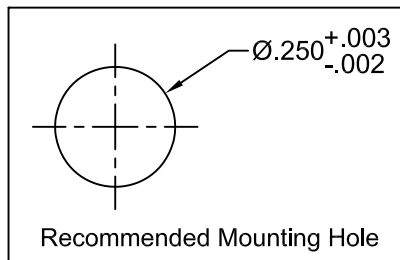
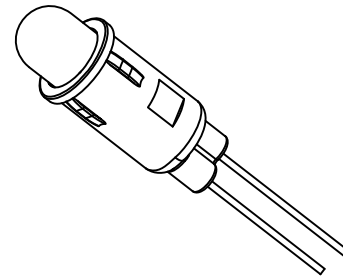


ITEM	Q'TY	PART NUMBER	PART DESCRIPTION
1	1	PM5-XXX	LED holder, Panel Mount, Press Fit (5mm) PM5 (Standard LED), PM5-5V (5V LED), & PM5-12V (12V LED)
2	1	5XX	T1 3/4 (5mm) Non-Flange LED, See Following Pages

REV.	DESCRIPTION	DATE	APPROVED
A	Engineering Release.	12/20/05	M. C.
B	Added Bi-Color Specs.	02/09/10	T. Y.
C	Updated LED Offering.	05/01/12	T. Y.
D	Updated BOM item 1.	11/13/12	T. Y.



BI-COLOR POLARITY		
LED P/N	(1) Cathode	(2) Cathode
5BC	Green	Red
5BC-Y/G	Green	Yellow
5BC-R/Y	Yellow	Red
5BC-A/G	Green	Amber





ABSOLUTE MAXIMUM RATINGS (Ta = 25°C)



REVERSE VOLTAGE	5V
REVERSE CURRENT (VR=5V)	100µA
OPERATING TEMPERATURE RANGE	-25°C ~ 85°C
STORAGE TEMPERATURE	-30°C ~ 100°C
LEAD SOLDERING TEMPERATURE (1/16" FROM BODY)	260°C for 5 Seconds

STANDARD TOLERANCE (UNLESS OTHERWISE SPECIFIED)		BIVAR [®] 4 THOMAS, IRVINE, CA. 92618 TEL: (949) 951-8808 FAX: (949) 951-3974			
DECIMALS	ANGULAR				
.X ±.1	X° ± 1°	TITLE: STD PANEL MOUNT INDICATORS PART NO: PM5XX REVISION: D			
.XX ±.02					
.XXX ±.010		DESIGNED: Sonny Dam	DATE: 12/20/05	CAGE CODE : 32559	SHEET # 1 OF 4
		CHECKED: T. Yin	DATE: 12/20/05	CAD GENERATED DOCUMENT, DO NOT MEASURE DRAWING.	

LED Assy.No.	Chip			Lens Appearance	Electro-Optical Data @20mA				Viewing Angle 2 θ 1/2 (Deg)	LED P/N	
	Material	Peak Wave Length	Emitted Color		If (mA)	Vf (V)		Iv (mcd)			
						MAX	TYP	MAX			TYP
PM5BWC	GaN/SiC	430	BLUE	WATER CLEAR	25	4	4.5	25	20	5BWC	
PM5BWD	GaN/SiC	430	BLUE	DIFFUSED	25	4	4.5	15	45	5BWD	
PM5BWT	GaN/SiC	430	BLUE	TINTED	25	4	4.5	30	20	5BWT	
PM5GC	GaP/GaP	568	GREEN	WATER CLEAR	30	2.1	2.8	40	35	5GC	
PM5GD	GaP/GaP	568	GREEN	DIFFUSED	30	2.1	2.8	25	45	5GD	
PM5GT	GaP/GaP	568	GREEN	TINTED	30	2.1	2.8	40	35	5GT	
PM5PGC	GaP/GaP	555	PURE GREEN	WATER CLEAR	30	2.2	2.8	10	35	5PGC	
PM5PGD	GaP/GaP	555	PURE GREEN	DIFFUSED	30	2.2	2.8	10	45	5PGD	
PM5PGT	GaP/GaP	555	PURE GREEN	TINTED	30	2.2	2.8	10	35	5PGT	
PM5YC	GaAsp/GaP	590	YELLOW	WATER CLEAR	30	2	2.8	40	35	5YC	
PM5YD	GaAsp/GaP	590	YELLOW	DIFFUSED	30	2	2.8	25	45	5YD	
PM5YT	GaAsp/GaP	590	YELLOW	TINTED	30	2	2.8	40	35	5YT	
PM5AC	GaAsp/GaP	605	AMBER	WATER CLEAR	30	2	2.8	40	35	5AC	
PM5AD	GaAsp/GaP	605	AMBER	DIFFUSED	30	2	2.8	25	45	5AD	
PM5AT	GaAsp/GaP	605	AMBER	TINTED	30	2	2.8	40	35	5AT	
PM5HC	GaAsp/GaP	625	HE RED	WATER CLEAR	30	2	2.8	40	35	5HC	
PM5HD	GaAsp/GaP	625	HE RED	DIFFUSED	30	2	2.8	25	45	5HD	
PM5HT	GaAsp/GaP	625	HE RED	TINTED	30	2	2.8	40	35	5HT	
PM5RC	GaP/GaP	700	RED	WATER CLEAR	20	2.1	2.8	2	35	5RC	
PM5RD	GaP/GaP	700	RED	DIFFUSED	20	2.1	2.8	2	45	5RD	
PM5RT	GaP/GaP	700	RED	TINTED	20	2.1	2.8	2	35	5RT	
PM5BC-A/G	GaAsp/GaP	605	AMBER	WHITE DIFFUSED	30	2	2.8	6	45	5BC-A/G	
	GaP/GaP	568	GREEN		30	2.1	2.8	6			
PM5BC	GaAsp/GaP	625	RED	WHITE DIFFUSED	30	2	2.8	6	45	5BD	
	GaP/GaP	568	GREEN		30	2.1	2.8	8			
PM5BC-R/Y	GaAsp/GaP	625	RED	WHITE DIFFUSED	30	2	2.8	6	45	5BC-R/Y	
	GaP/GaP	590	YELLOW		30	2	2.8	5			
PM5BC-Y/G	GaAsp/GaP	590	YELLOW	WHITE DIFFUSED	30	2	2.8	5	45	5BC-Y/G	
	GaP/GaP	568	GREEN		30	2.1	2.8	8			



STANDARD TOLERANCE (UNLESS OTHERWISE SPECIFIED)		 BIVAR [®] 4 THOMAS, IRVINE, CA. 92618 TEL: (949) 951-8808 FAX: (949) 951-3974
DECIMALS	ANGULAR	
	X° ± 1°	
DESIGNED: Sonny Dam	DATE: 12/20/05	TITLE: STD PANEL MOUNT INDICATORS
CHECKED: T. Yin	DATE: 12/20/05	PART NO: PM5XX
		REVISION: D
		CAGE CODE : 32559 SHEET # 2 OF 4
CAD GENERATED DOCUMENT, DO NOT MEASURE DRAWING.		

LED Assy.No.	Chip			Lens Appearance	Electro-Optical Data @20mA				Viewing Angle 2 θ 1/2 (Deg)	LED P/N
	Material	Peak Wave Length	Emitted Color		If (mA)	Vf (V)		Iv (mcd)		
					MAX	TYP	MAX	TYP		
PM5UBWC	InGaN/SiC	468	BLUE	WATER CLEAR	76	3.7	4.5	2500	15	5BWC2.515
PM5SGC	GaP/GaP	568	GREEN	WATER CLEAR	30	2.1	2.8	60	35	5SGC
PM5SGD	GaP/GaP	568	GREEN	DIFFUSED	30	2.1	2.8	50	40	5SGD
PM5SGT	GaP/GaP	568	GREEN	TINTED	30	2.1	2.8	60	35	5SGT
PM5SYC	GaAsP/GaP	590	YELLOW	WATER CLEAR	30	2	2.8	600	35	5SYC
PM5SYD	GaAsP/GaP	590	YELLOW	DIFFUSED	30	2	2.8	150	40	5SYD
PM5SYT	GaAsP/GaP	590	YELLOW	TINTED	30	2	2.8	600	35	5SYT
PM5SRC	GaAlAs/GaAs	645	SUPER RED	WATER CLEAR	30	1.7	2.4	60	35	5SRC
PM5SRD	GaAlAs/GaAs	645	SUPER RED	DIFFUSED	30	1.7	2.4	40	40	5SRD
PM5SRT	GaAlAs/GaAs	645	SUPER RED	TINTED	30	1.7	2.4	60	35	5SRT
PM5UGC	AlGaN	570	GREEN	WATER CLEAR	30	2.1	2.4	600	35	5UGC
PMTSUGC	AlGaN	570	GREEN	WATER CLEAR	30	2.1	2.4	300	35	5SUGC
PM5UYC	AlGaN	590	YELLOW	WATER CLEAR	30	2	2.4	1000	30	5UYC
PM5SUYC	AlGaN	590	YELLOW	WATER CLEAR	30	2	2.4	700	35	5SUYC
PM5UOC	AlGaN	590	YELLOW	WATER CLEAR	30	2	2.4	500	35	5UUYC
PM5UOC	AlGaN	625	ORANGE	WATER CLEAR	30	1.8	2.4	1400	35	5UOC
PM5SUOC	AlGaN	625	ORANGE	WATER CLEAR	30	1.8	2.4	1300	35	5SUOC
PM5URC	GaAlAs/GaAs	645	RED	WATER CLEAR	30	1.7	2.4	400	30	5URC
PM5SURC	AlGaN	640	RED	WATER CLEAR	30	1.8	2.4	500	35	5SURC
PM5UWC	InGaN/SiC	6500K	WHITE	WATER CLEAR	100	3.5	4.2	2700	30	5WC2.730

STANDARD TOLERANCE (UNLESS OTHERWISE SPECIFIED) <u>DECIMALS</u>		 BIVAR [®] 4 THOMAS, IRVINE, CA. 92618 TEL: (949) 951-8808 FAX: (949) 951-3974	
<u>ANGULAR</u> X° ± 1°			
		TITLE: STD PANEL MOUNT INDICATORS	
		DESIGNED: Sonny Dam	DATE: 12/20/05
CHECKED: T. Yin		DATE: 12/20/05	CAGE CODE : 32559 SHEET # 3 OF 4
CAD GENERATED DOCUMENT, DO NOT MEASURE DRAWING.			

LED Assy. No.	Peak Wave Length λ_p (nm)	Emitted Color	Lens Appearance	Max. Rating	Electro-Optical Data @ 2mA			Viewing Angle 2 θ 1/2 (Deg)	LED P/N
				If (mA)	Vf (V)		Iv (mcd)		
				MAX	TYP	MAX	TYP		
PM5BWDL	430	BLUE	DIFFUSED	7	3.8	4.2	4	45	5BWDL
PM5PGDL	555	PURE GREEN	DIFFUSED	7	2.1	2.6	1	45	5PGDL
PM5GDL	568	GREEN	DIFFUSED	7	2.1	2.6	5	45	5GDL
PM5YDL	590	YELLOW	DIFFUSED	7	2.0	2.6	4	45	5YDL
PM5ADL	605	AMBER	DIFFUSED	7	2.0	2.6	4	45	5ADL
PM5HDL	625	HE RED	DIFFUSED	7	2.0	2.6	5	45	5HDL
PM5SRDL	645	SUPER RED	DIFFUSED	7	1.7	2.3	6	45	5SRDL

Assembly P/N	Peak Wave Length λ_p (nm)	Emitted Color	Lens Appearance	Electro-Optical Data				Viewing Angle 2 θ 1/2 (Deg)	LED P/N
				If (mA)	Vf (V)		Iv (mcd)		
				MAX	TYP	MAX	TYP		
5 Volt				Data @ 5V					
PM5BWD5V	430	BLUE	DIFFUSED	-	-	5	15	40	5BWD5V
PM5GC5V	568	GREEN	WATER CLEAR	-	-	5	40	40	5GC5V
PM5GD5V	568	GREEN	DIFFUSED	-	-	5	25	40	5GD5V
PM5GT5V	568	GREEN	TINTED	-	-	5	40	40	5GT5V
PM5AD5V	605	AMBER	DIFFUSED	-	-	5	25	40	5AD5V
PM5HD5V	625	HE RED	DIFFUSED	-	-	5	30	40	5HD5V
PM5RD5V	700	RED	DIFFUSED	-	-	5	1.5	40	5RD5V
PM5YD5V	590	YELLOW	DIFFUSED	-	-	5	25	40	5YD5V
12 Volt				Data @ 12V					
PM5GC12V	568	GREEN	WATER CLEAR	-	-	12	40	35	5GC12V
PM5GD12V	568	GREEN	DIFFUSED	-	-	12	25	40	5GD12V
PM5HC12V	625	HE RED	WATER CLEAR	-	-	12	50	35	5HC12V
PM5HD12V	625	HE RED	DIFFUSED	-	-	12	30	40	5HD12V
PM5RC12V	700	RED	WATER CLEAR	-	-	12	2	35	5RC12V
PM5RD12V	700	RED	DIFFUSED	-	-	12	1.5	40	5RD12V
PM5YC12V	590	YELLOW	WATER CLEAR	-	-	12	25	35	5YC12V
PM5YD12V	590	YELLOW	DIFFUSED	-	-	12	20	40	5YD12V

STANDARD TOLERANCE (UNLESS OTHERWISE SPECIFIED)		 BIVAR [®] 4 THOMAS, IRVINE, CA. 92618 TEL: (949) 951-8808 FAX: (949) 951-3974
DECIMALS	ANGULAR X° ± 1°	
		TITLE: STD PANEL MOUNT INDICATORS
DESIGNED: Sonny Dam	DATE: 12/20/05	PART NO: PM5XX
CHECKED: T. Yin	DATE: 12/20/05	REVISION: D
CAGE CODE : 32559		SHEET # 4 OF 4
CAD GENERATED DOCUMENT. DO NOT MEASURE DRAWING.		