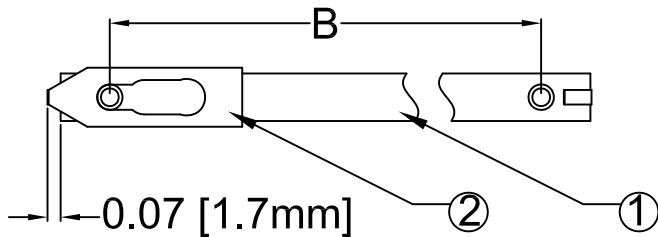
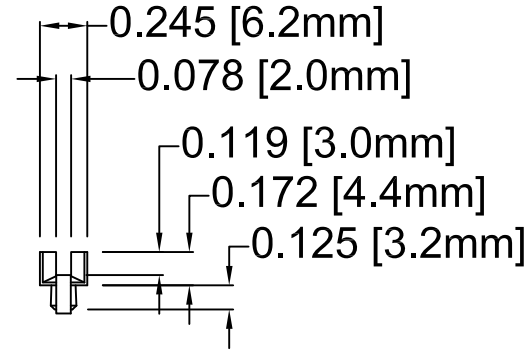
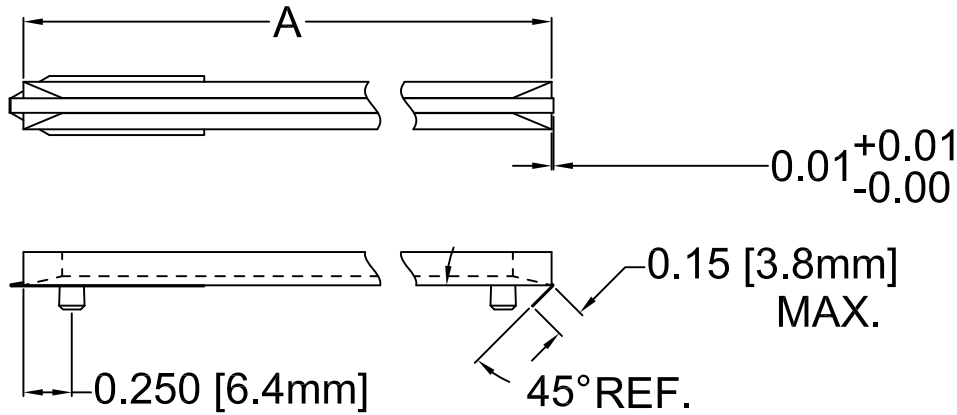
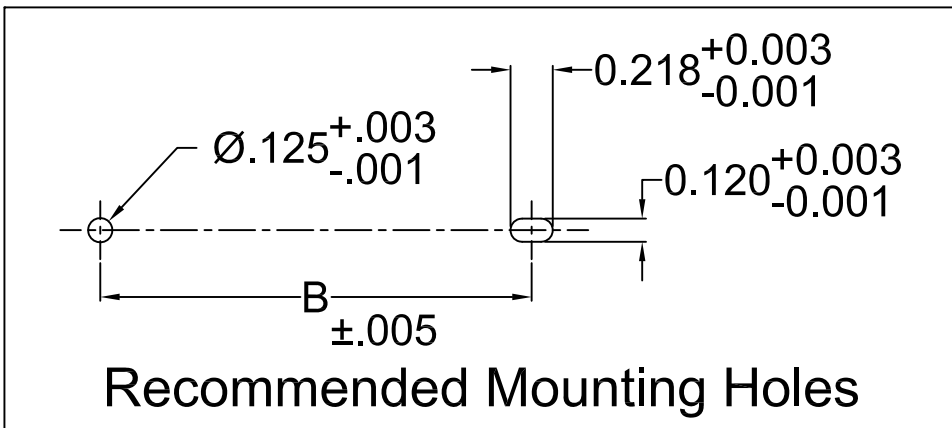


ITEM	Q'TY	PART NUMBER	PART DESCRIPTION
1	1	S-XXX-X	Anti-Static Press-In Card Guide
2	1	CS-600-F XX.XX	Conductive Insert

REV.	DESCRIPTION	DATE	APPROVED
B	Engineering Update w/o Changes	03/01/04	M. C.
C	Unit Conversion Error	12/17/07	M. C.
D	CI Length (.15" MAX) Update	10/06/09	T. Y.
E	Updated Conductive Insert Length For S-800-CI	08/19/13	T. Y.



Part No.	Conductive Insert	A		B	
		±0.030 [±0.76mm]		±0.024 [±0.61mm]	
S-250	CS-600-F 10.75	2.538 (64.5mm)		2.030 (51.6mm)	
S-300	CS-600-F 10.75	3.045 (77.3mm)		2.538 (64.5mm)	
S-350	CS-600-F 10.75	3.553 (90.2mm)		3.045 (77.3mm)	
S-400	CS-600-F 10.75	4.060 (103.1mm)		3.553 (90.2mm)	
S-450	CS-600-F 10.75	4.568 (116.0mm)		4.060 (103.1mm)	
S-500	CS-600-F 10.75	5.075 (128.9mm)		4.568 (116.0mm)	
S-550	CS-600-F 10.75	5.583 (141.8mm)		5.075 (128.9mm)	
S-600	CS-600-F 10.75	6.090 (154.7mm)		5.583 (141.8mm)	
S-650	CS-600-F 10.75	6.598 (167.6mm)		6.090 (154.7mm)	
S-700	CS-600-F 10.75	7.105 (180.5mm)		6.598 (167.6mm)	
S-750	CS-600-F 10.75	7.613 (193.4mm)		7.105 (180.5mm)	
S-800	CS-600-F 14.00	8.120 (206.2mm)		7.613 (193.4mm)	
S-850	CS-600-F 14.00	8.628 (219.2mm)		8.120 (206.2mm)	



STANDARD TOLERANCE ( UNLESS OTHERWISE SPECIFIED )		<b>BIVAR</b> <sup>®</sup> 4 THOMAS, IRVINE, CA. 92618 TEL: (949) 951-8808 FAX: (949) 951-3974	
DECIMALS	ANGULAR		
.X ±.1	X° ± 1°	<b>TITLE:</b> ANTI-STATIC PRESS-IN CARD GUIDEW/ CONDUCTIVE INSERT <b>PART NO:</b> S-XXX-CI <b>REVISION:</b> E	
.XX ±.01			
.XXX ±.005			
DESIGNED: <b>Michael Chen</b>	DATE: <b>01/21/03</b>	<b>CAGE CODE :</b> 32559	<b>SHEET #</b> 1 OF 1
CHECKED: <b>D. Green</b>	DATE: <b>01/21/03</b>	CAD GENERATED DOCUMENT, DO NOT MEASURE DRAWING.	