

REVISION RECORD		
REV	DESCRIPTION	DRFT

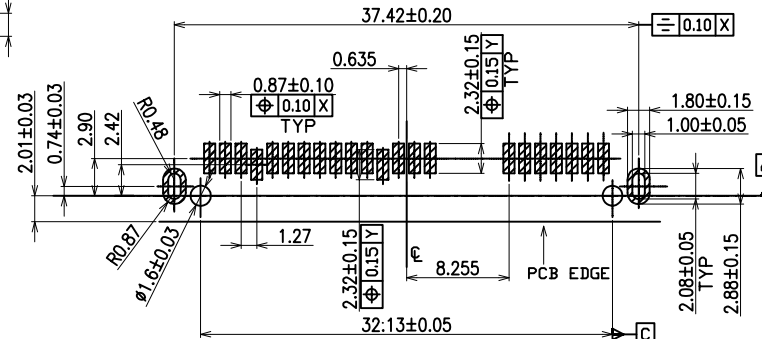
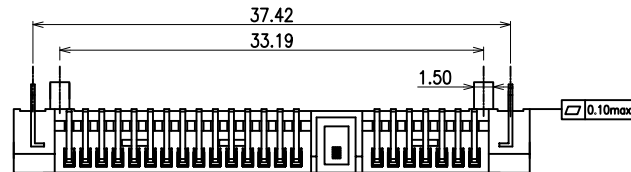
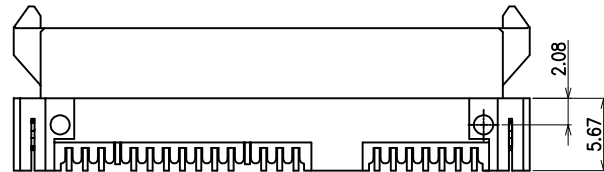
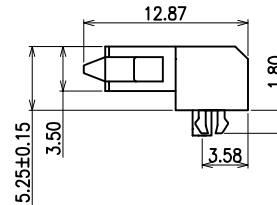
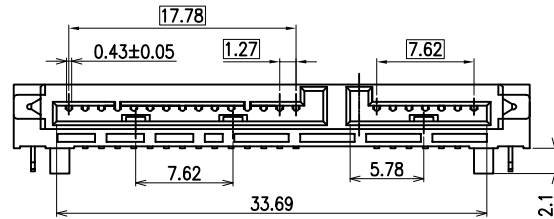
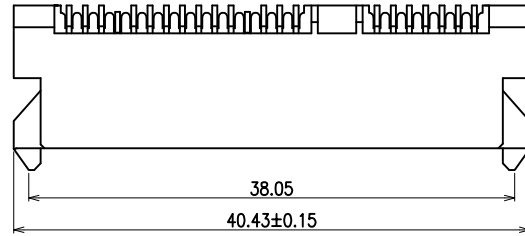
NOTES:

1. MATERIAL

HOUSING: LCP UL94V-0, COLOR: BLACK.  
 TERMINALS: BRASS  
 50u"MIN NICKEL UNDERPLATING ALL OVER,  
 1u" GOLD PLATING, ON THE CONTACT AREA  
 100u"MIN LIGHT TIN PLATING SOLDER AREA  
 METAL POST: BRASS 50u"MIN NICKEL UNDERPLATING ALL OVER,  
 100u"MIN LIGHT TIN PLATING ALL OVER

2. CHARACTERISTICS

CURRENT RATING: 1.5 AMP  
 CONTACT RESISTANCE: 30 mΩ MAX.  
 INSULATION RESISTANCE: 1000MΩ MIN.  
 DIELECTRICAL WITHSTANDING: AC 500V  
 MATING FORCE: 4.59Kgf MAX (45N MAX)  
 UNMATING FORCE: 1.02Kgf Min (10N Min)  
 DURABILITY: 500 CYCLES MIN.  
 OPERATING TEMPERATURE: -40C~+105C



RECOMMEND PCB LAYOUT (T=1.2)

DETACHED LISTS	MM (INCH)		DFTD Roy	DATE 11/20/2012	<b>Pulse Electronics</b>	<b>RoHS Compliant</b>
	TOLERANCES EXCEPT AS NOTED		CHKD	DATE		
	MM	±	APPVL	DATE	TITLE SATA RECEPTACLE 7+15P SMT ABOVE BOARD HEIGHT: 5.25	
	.0	± 0.50	MATERIAL :			
	.00	± 0.38	ANGLES : X°±3° X.X°±1°		DRAWING NO. E9122-001-01 /PART NO. E9122-001-01	
.000	± 0.25	THIRD ANGLE PROJECTION		SIZE A3		
				DO NOT SCALE DRAWING		SHEET 1 OF 1