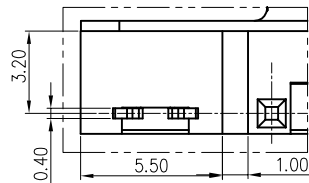
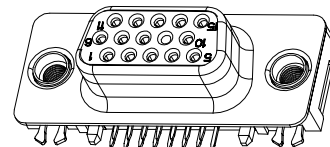


REVISION RECORD		
REV	DESCRIPTION	DRFT



DETAIL B  
SCALE: 2:1



NOTES:

1. MATERIAL:

- 1.1 HOUSING & COVER: LCP WITH 30% G.F, UL94 V-0 COLOR: BLACK
- 1.2 CONTACT: COPPER ALLOY;
- 1.3 METAL POST: COPPER ALLOY;
- 1.4 SHIELD: COPPER ALLOY;
- 1.5 RIVET: COPPER ALLOY;

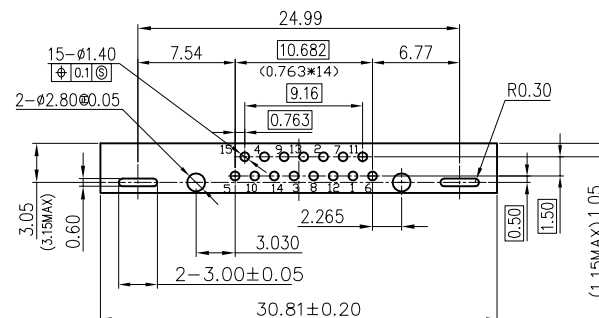
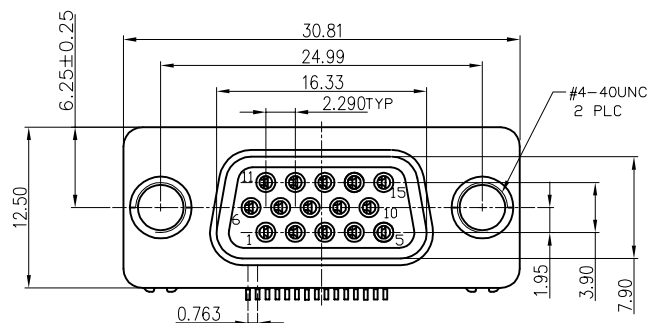
2. FINISH:

- 2.1 CONTACT:  
GOLD PLATED 1u" ON CONTACT AREA.  
2.54um [100u"] MIN. TIN PLATED ON SOLDER TAIL AREA.  
1.27um [50u"] MIN. NICKEL UNDERPLATED OVERALL.
- 2.2 METAL POST:  
2.54um [100u"] MIN. TIN PLATED  
1.27um [50u"] MIN. NICKEL UNDERPLATED OVERALL.
- 2.3 SHIELD:  
1.27um [50u"] MIN. NICKEL UNDERPLATED OVERALL.
- 2.4 RIVET:  
1.27um [50u"] MIN. NICKEL UNDERPLATED OVERALL.

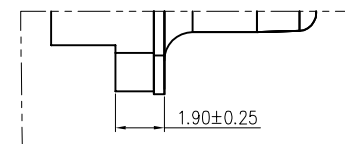
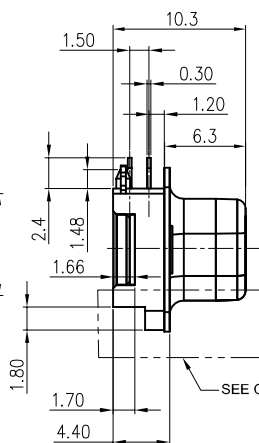
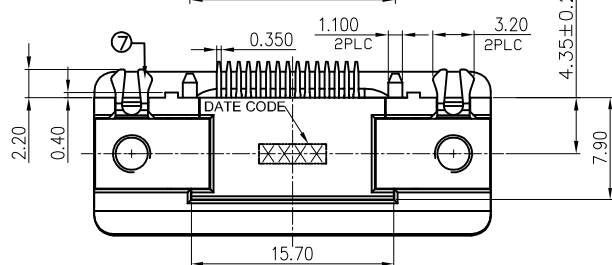
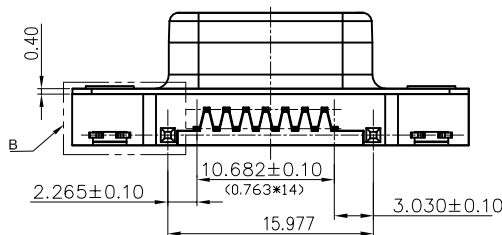
3. RECOMMENDED P.C.B THICKNESS : 1.6mm

4. OTHER GENERAL SPEC. TO REFER : D-SUB SERIES SPEC.

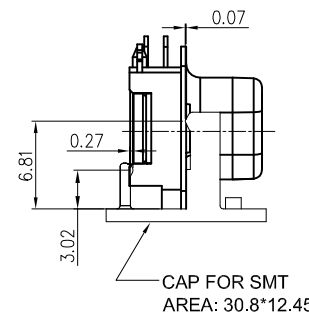
5. FOR WAVE SOLDERING LEAD-FREE PROCESS



PCB LAYOUT



DETAIL C  
SCALE: 2:1



CAP FOR SMT  
AREA: 30.8\*12.45

MM (INCH)		DFTD Roy	DATE 12/17/2012	Pulse Electronics		RoHS Compliant	
TOLERANCES EXCEPT AS NOTED		CHKD	DATE	TITLE			
MM		APPVL	DATE	SLIM D-SUB15P FEMALE (SINKING BOARD)			
.0 ± 0.35	X.X* ±3*	MATERIAL :		DRAWING NO. E9215-001-01			
.00 ± 0.25	X.XX* ±2*	QTY :		/PART NO. E9215-001-01			
.000 ± 0.15	X.XXX* ±1*	FINISH :		DO NOT SCALE DRAWING			
ANGLES :		SCALE : 1:1		SHEET 1 OF 1		SIZE A3	
THIRD ANGLE PROJECTION		SCALE : 1:1		SHEET 1 OF 1		REV 01	