

REVISION RECORD				
REV	ECO	DESCRIPTION	DRFT	CHKD

**NOTES:**

**ELECTRICAL:**

1. VOLTAGE RATING : 125 VAC RMS.
2. CURRENT RATING : 1.5 AMP.
3. CONTACT RESISTANCE : 30 MILLIOHMS MAX.
4. INSULATION RESISTANCE: 1000 MEGOHMS MIN @ 500 VDC.
5. DIELECTRIC STRENGTH : 1000 VAC RMS 60Hz, 1MIN.

**MECHANICAL:**

1. SHIELD MATERIAL : BRASS C2680 t=0.25mm.
2. HOUSING MATERIAL : FR52
3. CONTACT MATERIAL : PHOSPHOR BRONZE t=0.35mm.
4. PLATING : SHIELD PLATED Sn/Pb OVER NICKEL.  
CONTACT GOLD PLATING OVER NICKEL.
5. OPERATING LIFE : 750 CYCLES MIN.
6. PCB RETENTION PRE-SOLDER : 1 LB MIN.
7. PCB RETENTION POST-SOLDER: 10 LBS MIN.

**ENVIRONMENTAL:**

1. STORAGE : -40°C TO +85°C.
2. OPERATION: -40°C TO +85°C.
3. WAVE SOLDER TEMPERTURE: 255°C TO 265°C 5~10 SECOND.

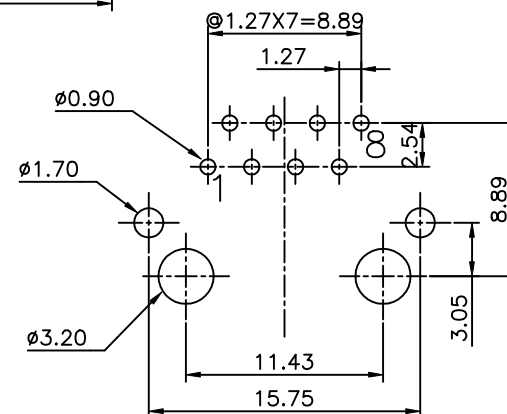
MATES WITH MODULAR PLUG CONFORMING TO FCC PART 68, SUBPART F.

CUL FILE NO. E163191

ROHS P/N: E5288-XX0B4X-L

R3-TIN  
RY-NICKEL  
R4-W/  
Nickel,Tinned  
Solder Tab

1- 3u" 2- 6u"  
3-15u" 4-30u"  
5-50u"



PC Board Layout

DETACHED LISTS	MM (INCH)		DFTO ANKUE	DATE 6/17/2005	FULL RISE ELECTRONIC CO., LTD	
	TOLERANCES EXCEPT AS NOTED		CHKD YICAN	DATE 2005/06/18		
	MM	±	MFO	DATE	TITLE (DIP & IMPROVED TYPE) RJ45 TOP ENTRY PCB JACK	
	.0 ± 0.2	±	APPVLLUSHENG	DATE 2005/06/18		
.00 ± 0.15	±	MATERIAL :		DRAWING NO. GE523096-LA		
.000 ± 0.075	±	ANGLES ± 0.5		/PART NO. SEE NOTE		
THIRD ANGLE PROJECTION		FINISH :		DO NOT SCALE DRAWING		
SCALE : 3:1		SHEET		OF		