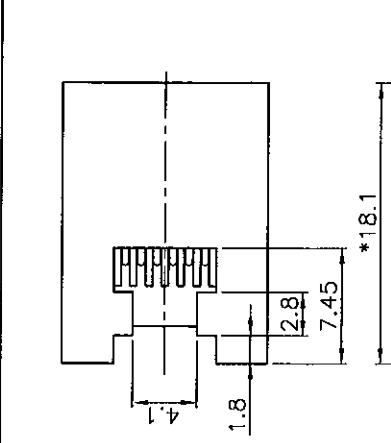
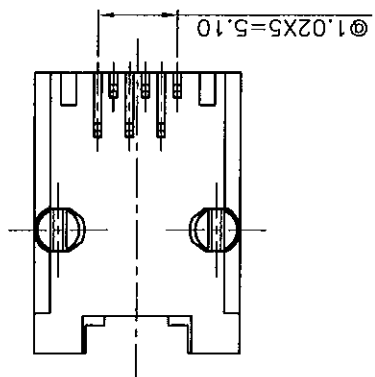
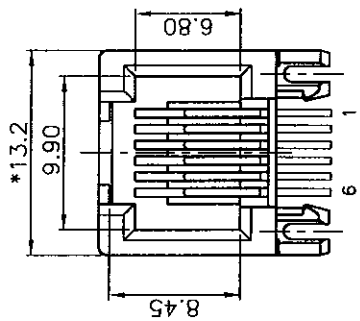
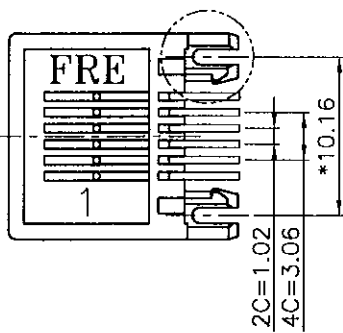


REVISION RECORD			
REV	ECO	DESCRIPTION	DRFT
△		ADD P/N	10/17/05*
△		ADD P/N	11/21/05*
△		ADD P/N	1/19/06
△		ADD P/N	1/19/06



PC Board Layout t=1.60mm
Component Side Shown



NOTES:

ELECTRICAL:

- VOLTAGE RATING : 150 VAC RMS.
- CURRENT RATING : 1.5 AMP.
- CONTACT RESISTANCE : 30 MILLIOHMS MAX.
- INSULATION RESISTANCE : 1000 MEGOHMS MIN @ 500 VDC.
- DIELECTRIC STRENGTH : 1000 VAC RMS 60Hz, 1MIN.

MECHANICAL:

- HOUSING MATERIAL : FR50&PBT+30% G.F UL94V-0.
- CONTACT MATERIAL : PHOSPHOR BRONZE Ø0.46mm.
- PLATING : GOLD PLATING OVER NICKEL.
- OPERATING LIFE : 750 CYCLES MIN.
- PCB RETENTION PRE-SOLDER : 1 LB MIN.
- PCB RETENTION POST-SOLDER: 10 LBS MIN.

ENVIRONMENTAL:

- STORAGE : -40°C TO +85°C.
 - OPERATION : -40°C TO +85°C.
 - WAVE SOLDERING TEMPERATURE: 230~250°C (5~10 SECONDS)
- MATES WITH MODULAR PLUG CONFORMING TO FCC PART 68, SUBPART F.
CUL FILE NO. E163191

ROHS PART NUMBER: E536X-300XX-L

- 2- 2C
- 4- 4C
- 6- 6C

MATERIAL OF HSG :

- 0G-PBT BK.
- 4G-FR50 BK
- △ AG-PBT+30% G.F. WHITE (PBT NATURAL COLOR)
- △ AG-PBT+30% G.F. PANTON RED 186C
- △ BG-PBT+30% G.F. PANTON GREEN 7479C
- △ EH-PBT+30% G.F. PANTON YELLOW 114C

DFTO C/O	DATE	CHKD	DATE	INFTO	DATE	APPROV	DATE
	04/12/05		04/12/05		04/12/05		04/12/05

TOLERANCES EXCEPT AS NOTED

MM	±
.0 ±0.12	±
.00 ±0.15	±
.000 ±0.075	±

ANGLES ± 0.5

THIRD ANGLE PROJECTION

SCALE : 3 : 1

DO NOT SCALE DRAWING

SHEET 1 OF 1

1 2 3 4 5 6 7 8

FULL RISE ELECTRONIC CO., LTD
TITLE
11.5mm SIDE PCB JACK 6P
DRAWING NO. GE53022-LC
REV A3
SIZE A3
REV 4