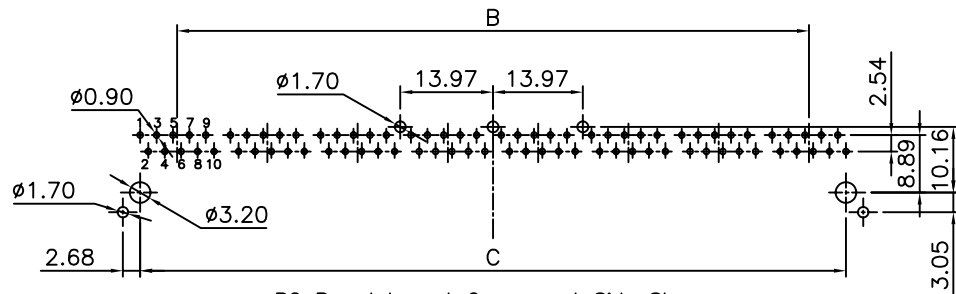
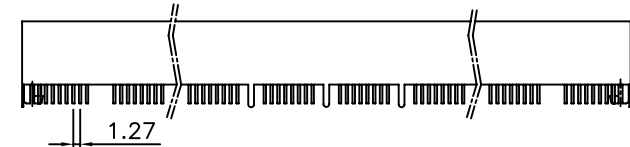
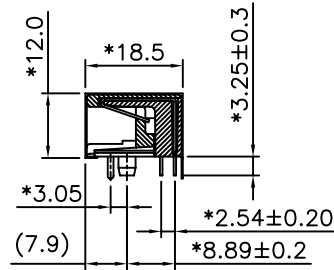
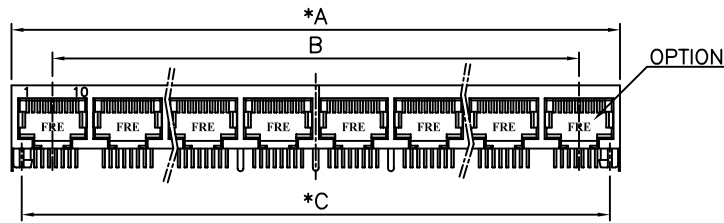
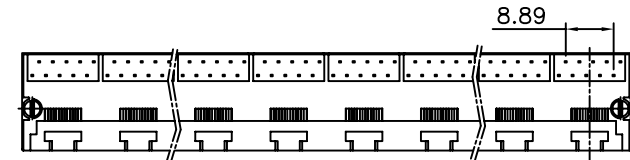
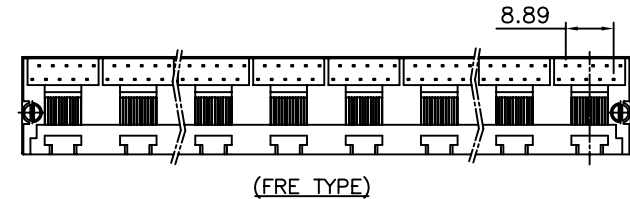


A1RFRD10

REVISION RECORD				
REV	ECO	DESCRIPTION	DRFT	CHKD
△		MODIFY DRAWING	ANKUE 7/08/06	



PC Board Layout Component Side Shown



NOTES:

ELECTRICAL:

- VOLTAGE RATING : 125 VAC RMS.
- CURRENT RATING : 1.5 AMP
- △ CONTACT RESISTANCE : 45 MILLIOHMS MAX.
- INSULATION RESISTANCE: 1000 MEGOHMS MIN @ 500 VDC.
- DIELECTRIC STRENGTH : 1000 VAC RMS 60Hz, 1MIN.

MECHANICAL:

- HOUSING MATERIAL : PBT+GF30% UL94V-0. COLOR:BLACK
- INSERT MATERIAL : PBT+GF30% UL94V-0. COLOR:BLACK
- CONTACT MATERIAL : PHOSPHOR BRONZE t=0.35mm .
- PLATING : GOLD PLATING OVER NICKEL.
- OPERATING LIFE : 750 CYCLES MIN.
- PCB RETENTION PRE-SOLDER : 1 LB MIN.
- PCB RETENTION POST-SOLDER: 10 LBS MIN.

ENVIRONMENTAL:

- STORAGE : -40°C TO +85°C.
- OPERATION: -40°C TO +85°C.
- WAVE SOLDERING TEMPERATURE: 230~250° 5~10 SECONDS.
- RoHS COMPLIANT.

MATES WITH MODULAR PLUG CONFORMING TO
FCC PART 68, SUBPART F.
RoHS PART NUMBER: E560X-XXX0XX-L

- 4- 4 CONTACTS
- 8- 8 CONTACTS
- 1-10 CONTACTS
- 1- 3u" 2- 6u" F-Gold Flash
- 3-15u" 4-30u" 5-50u" 6-Pd 20u"
- 8-FLAT PIN t=0.35mm(FRE TYPE)
- R-FLAT PIN t=0.35mm(MAXTOP TYPE)

- 0- TIN W/FRE LOGO
- △ 2- TIN W/O FRE LOGO
- △ 3- NICKEL W/O FRE LOGO
- 4- NICKEL W/FRE LOGO

- Type of Shield:
- E-FRONT PEG 3.05
 - F-FRONT PEG 3.05W/ 3 GROUNDING TABS
 - G-FRONT PEG 3.05W/ 5 GROUNDING TABS

- NO OF PORT: E-6 PORTS
G-8 PORTS
D-5 PORTS

PORTS	DIM"A" ±0.10 ±0.20	DIM"B" ±0.20	DIM"C" ±0.15
6	87.12	69.85	81.28
8	115.06	97.79	109.22
5	73.15	55.88	67.31



RoHS Compliant

FULL RISE ELECTRONIC CO., LTD

TITLE
11.5 SIDE ENTRY PCB GANG JACK 10P

DRAWING NO. GE563060-LC

/PART NO. SEE NOTE

SIZE
A3

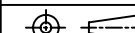
REV
1

DO NOT SCALE DRAWING

SHEET 1 OF 1

MM (INCH)		DFTO QSJ	DATE 7/1/05*
TOLERANCES EXCEPT AS NOTED		CHKD YUKI	DATE 2006/7/11
		MFO	DATE
		APPV-LUSHENG	DATE 2006/7/11
		MATERIAL :	
		QT'Y :	
		FINISH :	
		SCALE : 4:5	

DETACHED LISTS



THIRD ANGLE PROJECTION