

SINGLE BAND GLASS MOUNT

GPS glass mount single band antennas have the following specifications:

Frequency:	1575.4 MHz	Gain:	1.5 dBi
Pattern:	Herispherical	LNA Gain:	26 dB ± 2 dB
Polarization:	Right-Hand Circular	VSWR:	1.5:1
Mounting:	Double Sided Tape	Voltage:	3 or 5 V DC

Model	Size		Color	Cable	Connector
	H x L x W (In)				
GPSGMSMA	.2 x 3 x 1.2		Black	16.4' RG-174	SMA
GPSGMSMB	.2 x 3 x 1.2		Black	16.4' RG-174	SMB



MULTI BAND GLASS MOUNT

GPS glass mount multi band antennas have the following specifications:

Frequency:	824-960 / 1710-2170 / 1575.4 MHz	Gain:	2/4 dBi
Pattern:	Herispherical	LNA Gain:	26 dB ± 2 dB
Polarization:	Linear Verical/Omni	VSWR:	2.5:1/1.5:1
Mounting:	Double Sided Tape	Voltage:	3 or 5 V DC

Model	Size		Color	Cable	Connector
	H x L x W (In)				
GPSGM800/2170FS	.3 x 2 x 4		Black	16.4' RG-174	FME/SMA



GPS LOW PROFILE SINGLE BAND

GPS low profile single band antennas have the following specifications:

Frequency:	1575.4 MHz	Gain:	5 dBic
Pattern:	Herispherical	LNA Gain:	28 dB ± 2 dB
Polarization:	Right-Hand Circular	VSWR:	2.0:1
Mounting:	NMO Mount	Voltage:	5 V DC

Model	Size		Cable	Connector
	H x D (In)	Color		
GPSNMO01	1.3 x 2.9	White	Order Separately	Order Separately
GPSNMO02	1.3 x 2.9	Black	Order Separately	Order Separately
GPSNMO07	1.3 x 2.9	White	17' RG-58/U	SMB
GPSNMO08	1.3 x 2.9	Black	17' RG-58/U	SMB
GPSNMO09	1.3 x 2.9	White	17' RG-58/U	SMA
GPSNMO10	1.3 x 2.9	Black	17' RG-58/U	SMA



The most commonly used cable assembly/mount is the NMOHFUD (27 MHz to 6 GHz) with 17' of UD (RG-58/U Dual Shield).

1 800 ANTENNA (268-3662)

NOTE: Antennas are not to scale

GPSDM



GPS SINGLE BAND DIRECT MOUNTS

GPS single band direct mount antennas have the following specifications:

Frequency:	1575.4	Polarization:	Right-Hand Circular
Gain:	5 dBic	Coax:	17' RG-174
LNA Gain:	28 dB ± 2 dB	Voltage:	5 V DC
Pattern:	Hemispherical	Color:	Black
Mounting:	Direct Feed 5/8" hole	Size:	.07" H x 2.5" Dia

Model	Connector
GPSDM02	MCX
GPSDM04	MMCX
GPSDM06	SMB
GPSDM08	SMA

GPS COMBI WHIP DIRECT MOUNTS

GPS combi whip direct mount antennas have the following specifications:

LNA Gain:	26 dB ± 2 dB	Pattern:	Hemispherical / Omni
Polarization:	Right-Hand Circular /Vertical	Coax:	16.4' RG-174 / 16.4' RG-174
Mounting:	Direct Feed 5/8" hole	Voltage:	5 V DC
Color:	Black	Base Size:	2" W x 2.3" L x 0.7" H

GPSCW



GPSCW3E



Model	Frequency (MHz)	Gain (dBi/dBic)	Whip Length (In)	Connector
GPSCW1502	136-174 / 1575.42	2.14/5	22	SMA/SMB
GPSCW4501	406-512 / 1575.42	2.14/5	6.25	SMA/SMA
GPSCW4502	406-512 / 1575.42	2.14/5	6.25	SMA/SMB
GPSCW3E8001	806-896 / 1575.42	5/5	11.5	SMA/SMA
GPSCW3E8003	806-896 / 1575.42	5/5	11.5	FME/SMA

GPS LTE DIRECT MOUNTS

Model	Frequency (MHz)	Gain (dBd/dBi)	Polarization	VSWR	Mounting	Voltage	Size	Cable	Conn
							H x Dia (In)		
GPSDM700/2500FFS	698-960/1710-2170/2300-2700	.9/3	Linear Vertical	2.0:1	3/4" Hole	3 or 5	3.5 x 4.16	17' RG-58	FME
	2400-2485/5150-5850	3.9/6	Linear Vertical					17' RG-58	FME
	1575.42	5 dBic	RHCP					17' RG-174	SMA



GPSDM700/2500

GPS MULTI BAND DIRECT MOUNTS

GPS multi band direct mount antennas have the following specifications:

Frequency: 824-960 / 1710-2170 / 1575.4 MHz

VSWR: <2.0:1

Gain: 2 dBi / 2 dBi / 5 dBic

LNA Gain: 26 dB ± 2 dB

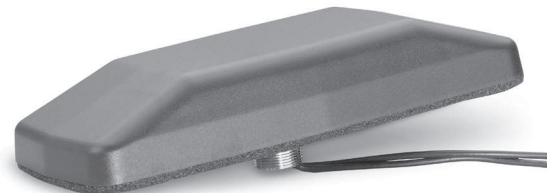
Pattern: Omni / Omni / Hemispherical

Voltage: 3 or 5 V DC

Polarization: Vertical / Vertical / Right-Hand Circular

Coax: 16.4' RG-174 / 16.4' RG-174

Mounting: Direct Feed 3/4" hole



GPSCP

Model	Size	Color	Connector
	L x W x D (In)		
GPSCP00	7.6 x 3.4 x 1.3	Black	TNC/SMA
GPSCP01	7.6 x 3.4 x 1.3	White	No Conn
GPSCP02	7.6 x 3.4 x 1.3	Black	No Conn/SMA
GPSCP03	7.6 x 3.4 x 1.3	White	No Conn/SMA
GPSCP04	7.6 x 3.4 x 1.3	Black	No Conn/SMB
GPSCP05	7.6 x 3.4 x 1.3	White	No Conn/SMB
GPSCP06	7.6 x 3.4 x 1.3	Black	SMA/SMA
GPSCO07	7.6 x 3.4 x 1.3	White	SMA/SMA
GPSCP08	7.6 x 3.4 x 1.3	Black	MPL/SMA
GPSCP09	7.6 x 3.4 x 1.3	White	MPL/SMA
GPSCP10	7.6 x 3.4 x 1.3	Black	TNC/BNC
GPSCWCP00	3.9 x 2.3 x 3.2	Black	TNC/SMA
GPSCWCP01	3.9 x 2.3 x 3.2	Black	No Conn/SMA
GPSCWCP02	3.9 x 2.3 x 3.2	Black	No Conn/SMB
GPSCWCP03	3.9 x 2.3 x 3.2	Black	SMA/MPL
GPSCWCP04	3.9 x 2.3 x 3.2	Black	SMA/SMA



GPSCW

NOTE: Antennas are not to scale

1 800 ANTENNA (268-3662)



GPS LTE DIRECT MOUNTS

NMOHFGPS mounts have the following specifications:

Frequency:	1575.4 - 1576.4 MHz	Gain:	5 dBic
Polarization:	Right-Hand Circular / Vertical	LNA Gain:	26 dB ± 2 dB
Cable:	16.4' RG-174 (GPS)	VSWR:	Less than 2:1
	16.4' RG-58 (NMOHF)	Voltage:	3 or 5 V DC
Size:	.5 x 2 x 4.5	Color:	Black
Mounting:	5/8" Hole		

Model	Connectors
NMOHFGPSFMENOCNN	FME/No Connector
NMOHFGPSFMESMA	FME/SMA
NMOHFGPSNOCNN	No Connectors
NMOHFGPSSMASMA	SMA/SMA

NOTE: Specifications listed refer to GPS performance. Additional antenna specifications are dependent on the antenna mounted on the NMO side.

SINGLE BAND MAGNETIC MOUNTS

GPS single band magnetic mount antennas have the following specifications:

Frequency:	1575.4 MHz	Gain:	5 dBic
Pattern:	Herispherical	LNA Gain:	26 dB ± 2 dB
Polarization:	Right-Hand Circular	VSWR:	Less than 2:1
Cable:	17' RG-174	Voltage:	5 V DC



GPS Single Band Mag Mount

Model	Size	Color	Connector
	H x L x W (In)		
GPS0002	0.5 x 1.75 x 1.5	Black	MCX
GPS0006	0.5 x 1.75 x 1.5	Black	SMB
GPS0008	0.5 x 1.75 x 1.5	Black	No Conn
GPS0010	0.5 x 1.75 x 1.5	Black	SMA
GPS0012	0.5 x 1.75 x 1.5	Black	BNC

MULTI BAND MAGNETIC MOUNTS

GPS Multi band magnetic mount antennas have the following specifications:

Frequency:	824-960 / 1710-2170 / 1575.4 MHz
Gain:	2 dBi / 2 dBi / 5 dBic
LNA Gain:	26 dB ± 2 dB
Pattern:	Omni / Omni / Herispherical
Polarization:	Verticl / Vertical / Right-Hand Circular
VSWR:	Less than 2:1
Cable:	17' RG-174
Voltage:	3 or 5 V DC



GPS Multi Band Mag Mount

Model	Size	Color	Connector
	H x L x W (In)		
GPSCPMM00	1.3 x 7.6 x 3.4	Black	TNC/SMA
GPSCPMM02	1.3 x 7.6 x 3.4	Black	No Conn/SMA

GPS MULTI BAND STEALTH BLADES

Model	Frequency (MHz)	Gain	Dimensions L x W x D (In)	Polarization	Voltage	Color	Coax	Connector
GPSSB800/2170FS	806 - 960	0 dBi	5.4 x 1.5 x .6	Linear Vert	3 or 5	Black	16.4' RG-174	FME
	1710 - 2170	0 dBi		RHCP			16.4' RG-174	SMA
	1575.4	26 (LNA)						



GPS TIMING ANTENNA

Model	Frequency (MHz)	LNA Gain (± 2 dB)	Dimensions H x W (In)	Polarization	Voltage (DC)	Color	Mounting	Connector
GPS0015	1575.42 \pm 1.023	25	4 x 4.5	RHCP	4-15	White	Bracket	N Male

