

LTE Multiband / Active GPS Roof Mount Antenna

Pulse Part Number GPSDM700/5800 Family



Pulse is proud to introduce a new state-of-the-art direct mount multi band antenna. This body mount antenna operates from 698 thru 5875 MHz, including LTE. The antenna is ideal for voice, mobile data, Public Safety, WLAN and asset tracking applications. The rugged, yet aesthetically pleasing design provides UV and IP-65 protection to ensure a long, reliable, maintenance-free life.

The antenna mount can accommodate up to a 5/8" (16 mm) thick surface. The GPSDM700/5800 has 3 cables to optimally support the different technologies. Wireless voice, data and LTE frequencies are supported by a single low-loss RG-58 cable. WLAN operates on a separate RG-58 cable. The 26 dB gain GPS antenna has its own RG-174 cable. Additional cable configurations, lengths and connector options are available upon request.

Features

- Single antenna supports multiple applications/ technologies
- Eliminates "antenna farm" vehicle appearance
- Separate cables create maximum application flexibility
- Available in black or white
- Easily mounted through a single 3/4" hole
- RoHS Compliant Product

Applications

- Mobile and Fixed Broadband
- Navigation/Asset Tracking/Fleet Management
- LTE and 700 MHz Public Safety

P/N	Frequency	Cable Type	Cable Length (feet / meters)	Color	Connectors
GPSDM700/5800SSS	698-960/1710-2170/2300-2700 2400-2485/5150-5875 1575.42	RG-58 RG-58 RG-174	17 / 5.18 17 / 5.18 17 / 5.18	Black	SMA Male SMA Male SMA Male
GPSDM700/5800GGT	698-960/1710-2170/2300-2700 2400-2485/5150-5875 1575.42	RG-58 RG-58 RG-174	17 / 5.18 17 / 5.18 17 / 5.18	Black	SMA Male RPSMA Male SMA Male
GPSDMW700/5800SSS	698-960/1710-2170/2300-2700 2400-2485/5150-5875 1575.42	RG-58 RG-58 RG-174	17 / 5.18 17 / 5.18 17 / 5.18	White	SMA Male SMA Male SMA Male

LTE Multiband / Active GPS Roof Mount Antenna

Pulse Part Number GPSDM700/5800 Family

Electrical Specifications

Frequency [MHz]	Cable 1 (GSM)	698-960/1710-2170/ 2300-2700
	Cable 2 (WiFi)	2400-2485/5150-5875
	Cable 3 (GPS)	1575.42
Nominal Impedance [Ω]		50
VSWR	698-960/1710-2170/ 2300-2700	2.5:1
	2400-2485/5150-5875	2.0:1
Gain [dBi]	698-960/1710-2170/ 2300-2700	4.5
	2400-2485/5150-5875	6.5
Polarization	698-960/1710-2170/ 2300-2700	Linear Vertical
	2400-2485/5150-5875	Linear Vertical
	1575.42	RHCP
Power Rating [W]	698-960	100
	1710-2170	20
	2400-5875	20

LNA Specifications

Gain [dBi - 3.3 V]	28
Gain [dBi - 5 V]	30
Voltage [VDC]	3.3 - 5

Environmental Specifications

Operating Temperature [$^{\circ}\text{C}$]	-40 / +85
Storage Temperature [$^{\circ}\text{C}$]	-40 / +85
Relative Humidity MIL-STD810G, method 507.4 @ 30 $^{\circ}$ [%]	93

Mechanical Specifications

Color	Black or White
Ingress Protection	IP 65
Weight [ozs/g]	15 / 470
Dimensions [in/mm]	3.5 H x \varnothing 4.26 / 88.3 x \varnothing 108
Mounting Hole [in/mm]	\varnothing .76 / 19.3

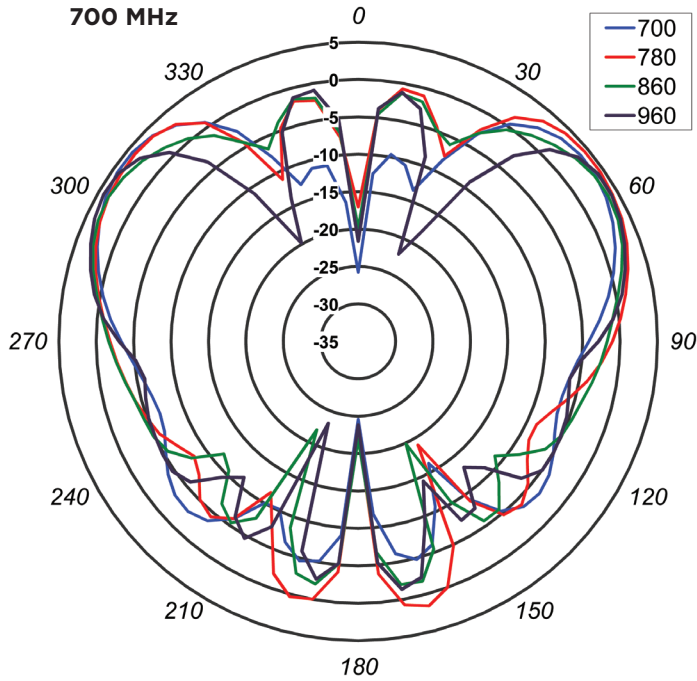
LTE Multiband / Active GPS Roof Mount Antenna

Pulse Part Number GPSPDM700/5800 Family

Radiation Patterns

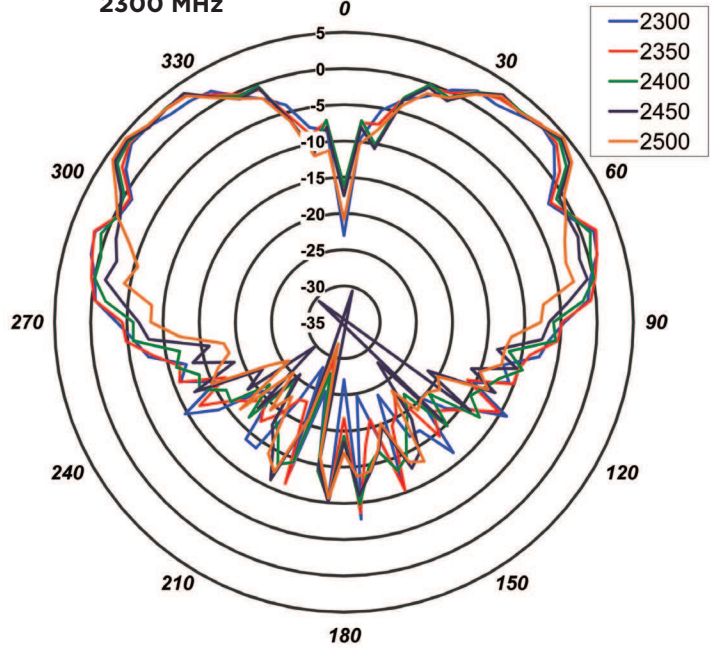
Vertical Plane

700 MHz



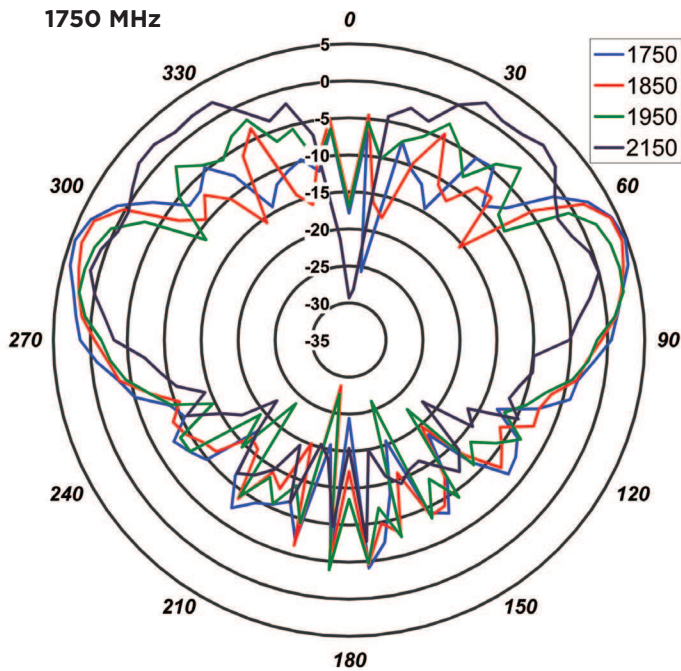
Vertical Plane

2300 MHz



Vertical Plane

1750 MHz

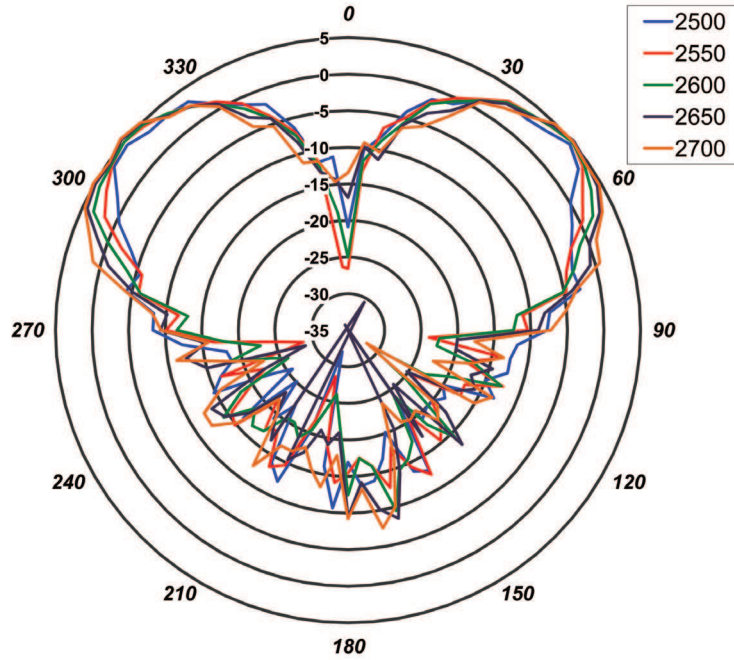


LTE Multiband / Active GPS Roof Mount Antenna

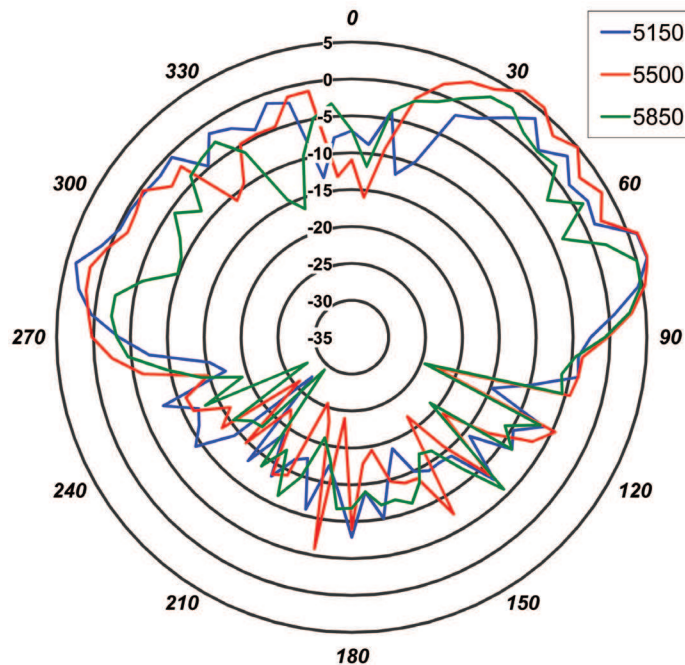
Pulse Part Number GPSPDM700/5800 Family

Radiation Patterns

Vertical Plane
2500 MHz



Vertical Plane
5150 MHz



For More Information

Pulse Worldwide Headquarters
12220 World Trade Drive
San Diego, CA 92128
U.S.A.

Larsen Brand Antennas
3611 NE 112th Avenue
Vancouver, WA 98682
USA

Europe Headquarters
Pulse GmbH & Co. KG
Zeppelinstrasse 15
Herrenberg
Germany

Asia Headquarters
B402, Shenzhen Academy of
Aerospace Technology Bldg,
10th Kejian Road, High-Tech Zone
Nanshan District, Shenzhen, PR China 518057

Pulse North Asia
3F, No. 198, Zhongyuan Road
Zhongli City, Taoyuan County 320
Taiwan R. O. C.

Pulse (Suzhou) Wireless Products Co., Inc.
99 Huo Ju Road, (#29 Bldg, 4th Phase)
Suzhou New District
Science & Tech Industrial Park
Jiangsu Province, Suzhou 215009 PR China

Tel: 858 674 8100
Fax: 858 674 8262

Tel: 360 944 7551
Fax: 369 944 7556

Tel: 49 7032 7806 0
Fax: 49 7032 7806 135

Tel: 86 755 33966678
Fax: 86 755 33966700

Tel: 886 3 4356768
Fax: 886 3 4356823

Tel: 86 512 6807 9998
Fax: 86 512 6809 8023

Performance warranty of products offered on this data sheet is limited to the parameters specified. Data is subject to change without notice. Other brand and product names mentioned herein may be trademarks or registered trademarks of their respective owners. © Copyright, 2010, Pulse Electronics, Inc. All rights reserved.