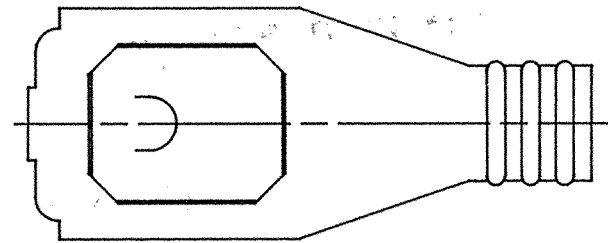
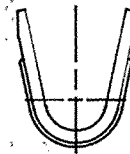
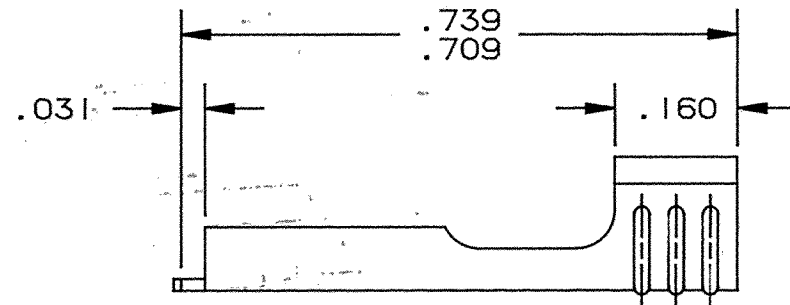
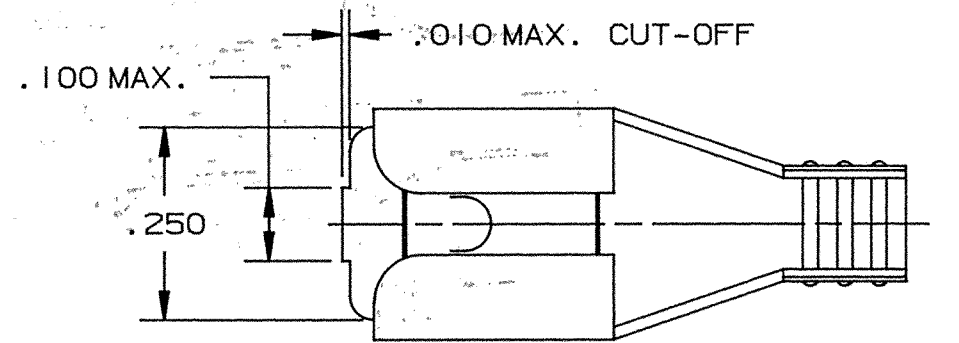


DEPT	I
1	
2	
3	
4	I
5	
6	
7	
8	
9	
10	
11	
12	
NC	
JZ	

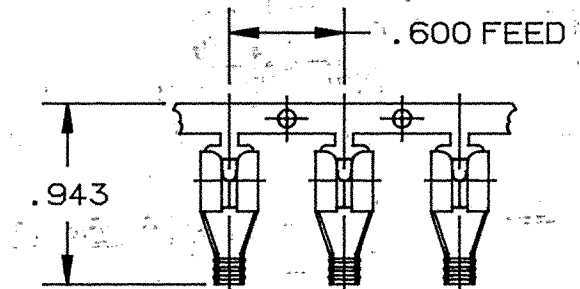
PART NAME: TERMINAL, FEMALE

PART NO: 3000H214A/-5-2

PART NUMBER	MATERIAL	FINISH
3000H214A-5-2	.016 ±.001 TH'K BRASS C26000, 3/4 HARD	PRETINNED
3000H214AB-5-2	.016 ±.001 TH'K BRASS C26000, 3/4 HARD	NONE

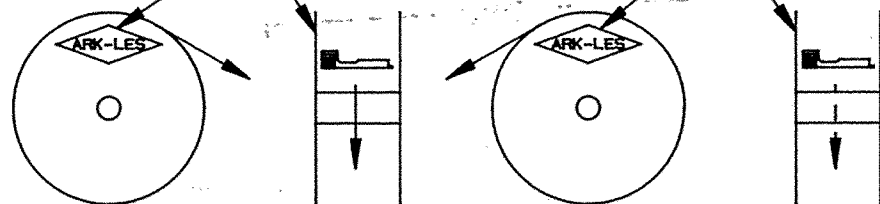


- NOTES:
1. TO ACCEPT .250 X .032 MALE TAB.
  2. TO ACCOMMODATE #12-#14 GAUGE WIRE.
  3. RECOMMENDED STRIP LENGTH: 3/16 ±1/32.
  4. FOR TERMINALS LOOSE PIECE ADD SUFFIX "-1" TO PART NUMBER (I.E. 3000H214A-5-2-1).
  5. FOR REVERSE REELING ADD SUFFIX "R" TO PART NUMBER (I.E. 3000H214A-5-2R).



ARK-LES LETTERING THIS SIDE

ARK-LES LETTERING THIS SIDE



STANDARD REELING  
(I.E. 3000H214A-5-2)

REVERSE REELING  
(I.E. 3000H214A-5-2R)

REELING DIAGRAMS

**ARK-LES**  
**UNCONTROLLED**

FABRICATED TERMINAL STRIP

SCALE: FULL

			PROD. REL. DH1988 10-29-85 R.T.	TOLERANCES UNLESS OTHERWISE SPECIFIED:
			QUOTE REL. 55428	DECIMALS ±.010 METRIC ±0.25mm ANGLES ±1°
			DR: M. BUMILA 4-12-93	MATERIAL: SEE TABLE
			CHK'D: R.W.T. 5-20-93	FINISH: SEE TABLE
			APP: Bishop 6-4-93	PART NO: 3000H214A/-5-2
D	REDRAWN WITHOUT CHANGE PER ECR #9582	4-12-93	M.B.	SUPERCEDES DWG. DATED: 10-28-85
REV.	DESCRIPTION	DATE	DR.	SCALE: 4X CAD NO: BT00066

ORIGINAL IF RED