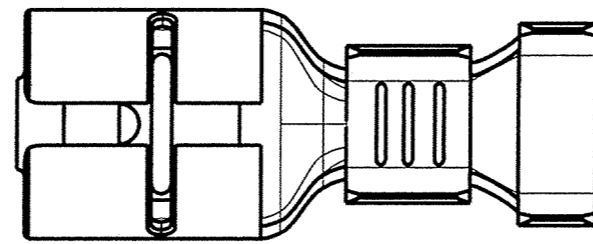
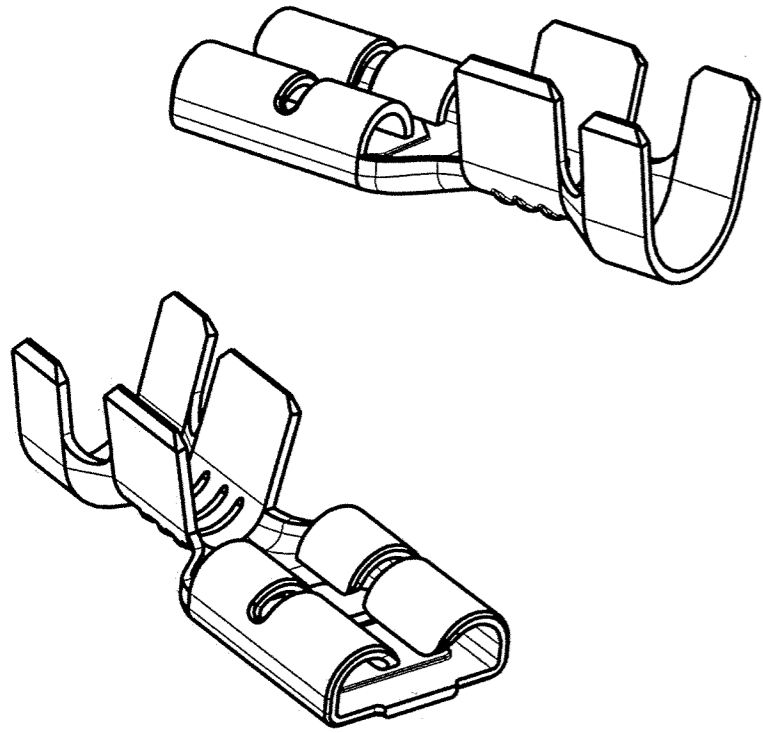
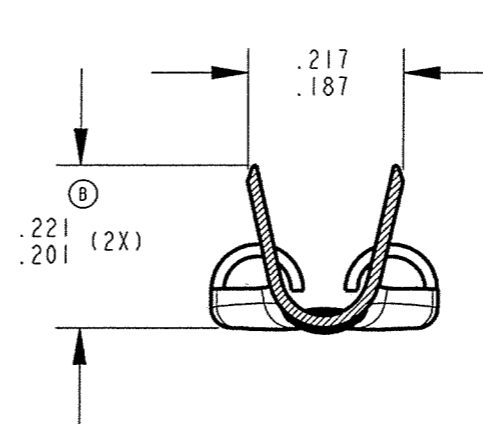
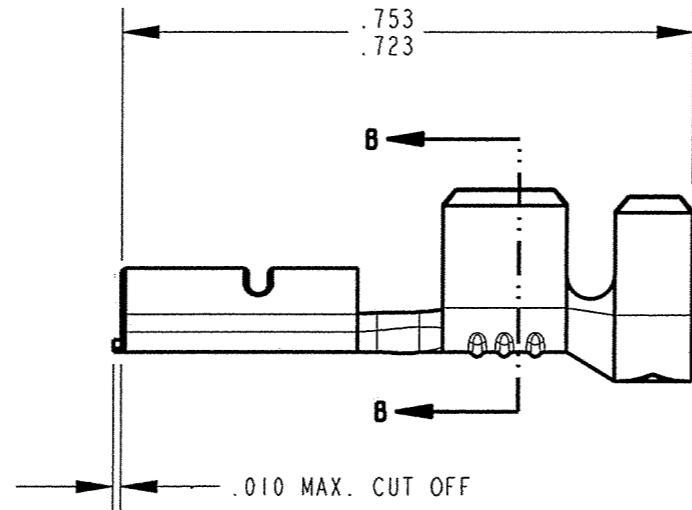


CUSTOMER DRAWING

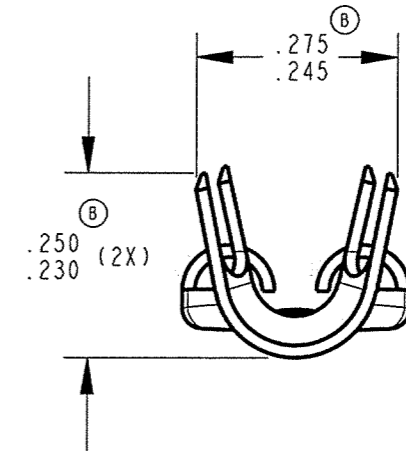
P/N: 83000131210
REV B



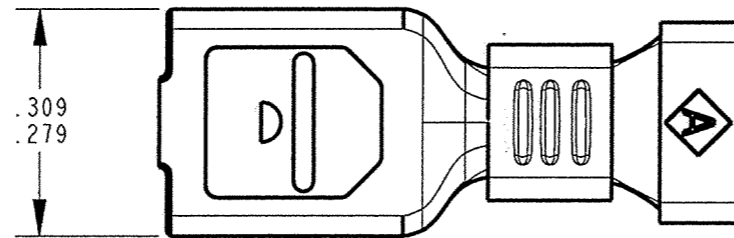
- NOTES:
 1. TO ACCEPT STANDARD .250 X .032 MALE TAB
 2. TO ACCEPT AWG #12 - #10.
 3. RECOMMENDED STRIP LENGTH 9/32 +/- 1/32.
 4. INSERTION/WITHDRAWAL FORCES TO COMPLY WITH UL 310.



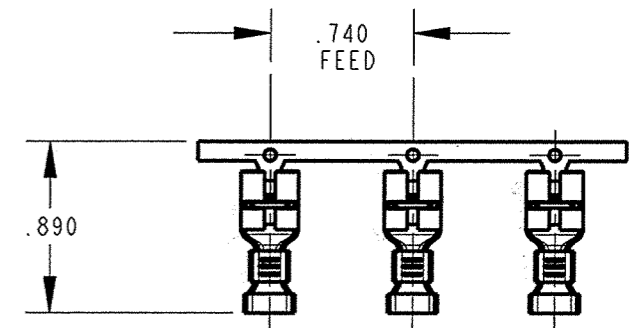
WIRE GRIP SECTION B-B



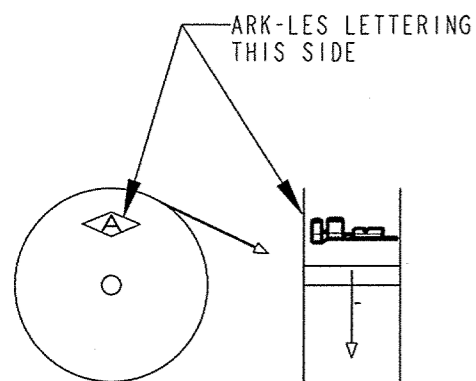
INSULATION GRIP



ARK-LES UNCONTROLLED



FABRICATED TERMINAL STRIP SCALE 1:1



REELING DIAGRAM

PRINT DIST.	PROD. REL. ECR# S000005 12-15-03	CHK'D	TOLERANCES UNLESS OTHERWISE SPECIFIED	 CORPORATION STOUGHTON, MA
DEPT #	QUOTE REL.	NO 4/19/05 APP.	DECIMALS ± .010	
ENG 1	DRAWN BY D.O'NEILL 10/28/03	APPROVED 4-20-05	METRIC ± 0.25mm	PART NAME FEMALE TERMINAL OPEN BARREL, ROLL RAIL .250 X .032, AWG #12-#10
SALES	SUPERSEDES DWG. DATED:	SCALE 4:1	ANGLES ± 1°	
STO	DO NOT SCALE PRINT	MATERIAL: .016 ± .001 THICK BRASS, PRETINNED	3RD ANGLE PROJECTION	CAD#: 83000131210-CUST-REVB.drw P/N: 83000131210
RAL	FINISH: SEE MATERIAL		DWG SIZE B	
JZ				REV B
CHINA				
REV.	DESCRIPTION	DATE	DR.	
B	REVISED PER ECR#S000120	3/2/05	DON	
A	PROD.REL. PER ECR# S000005	10/28/03	DON	