

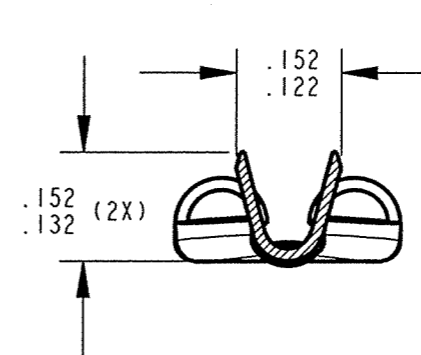
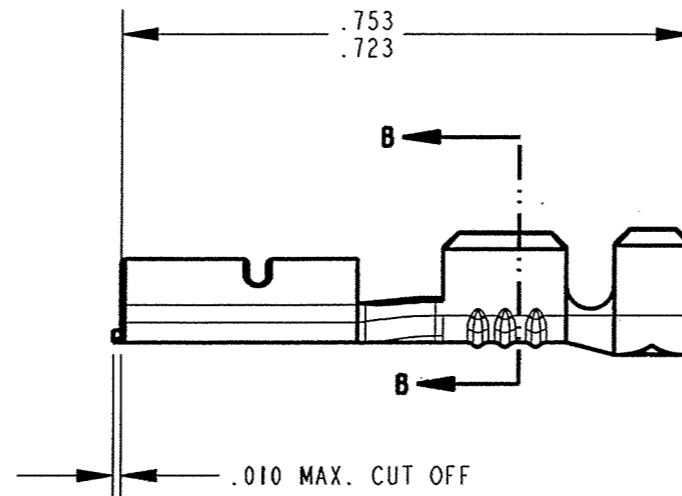
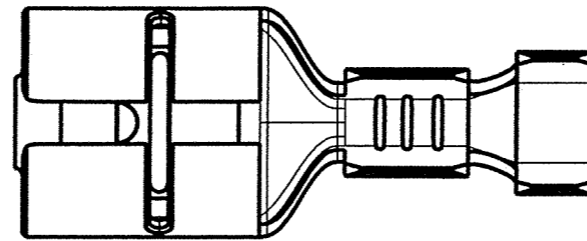
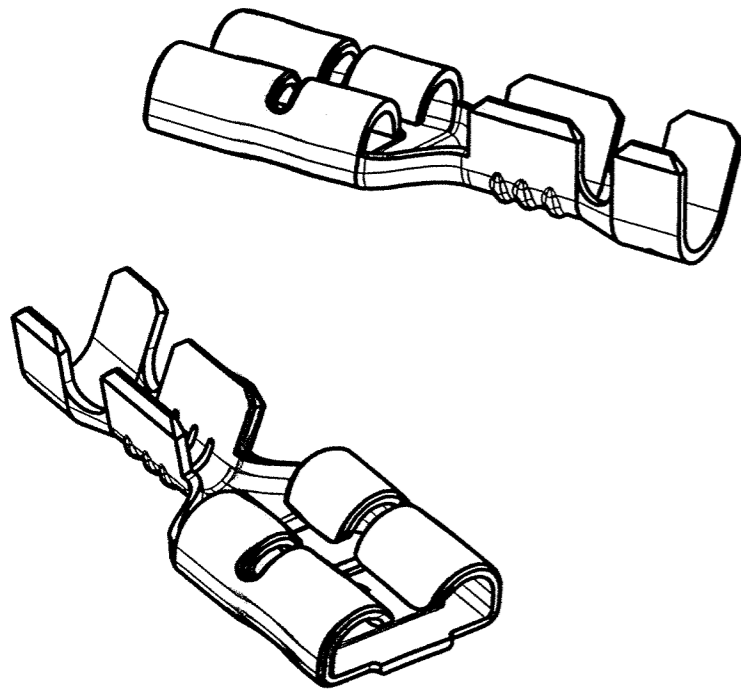
CUSTOMER DRAWING

P/N: 83000131614

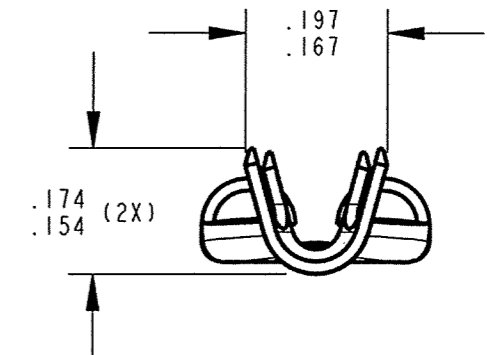
REV
B

NOTES:

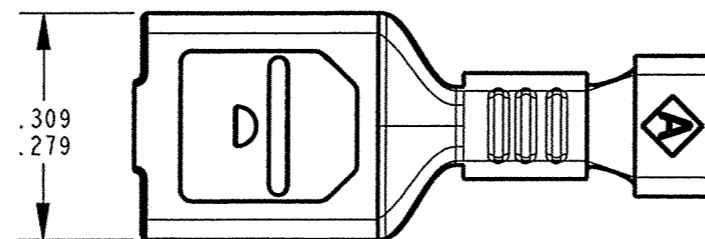
1. TO ACCEPT STANDARD .250 X .032 MALE TAB
2. TO ACCEPT AWG #16 - #14.
3. RECOMMENDED STRIP LENGTH 9/32 +/- 1/32.
4. INSERTION/WITHDRAWAL FORCES TO COMPLY WITH UL 310.



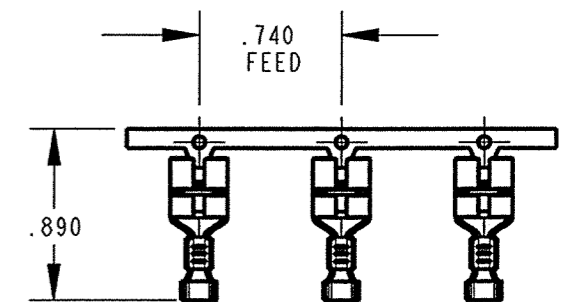
WIRE GRIP SECTION B-B



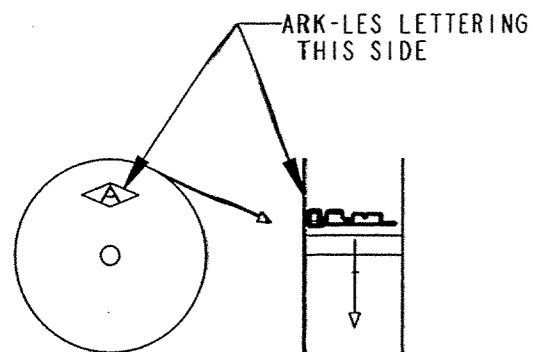
INSULATION GRIP



ARK-LES UNCONTROLLED



FABRICATED TERMINAL STRIP SCALE 1:1



REELING DIAGRAM

				PRINT DIST.	PROD. REL.	ECR#S000005	12-15-03	CHK'D	TOLERANCES UNLESS OTHERWISE SPECIFIED
				DEPT #	QUOTE REL.			DO 4/19/05	DECIMALS ±.010
				ENG	DRAWN BY	D.O'NEILL	10/28/03	APP.	METRIC ±0.25mm
				SALES	SUPERSEDES DWG. DATED:			4-20-05	ANGLES ±1°
B	REVISED PER ECR#S000120	3/1/05	DON	STO	SCALE 4:1	DO NOT SCALE PRINT			3RD ANGLE PROJECTION
A	PROD.REL. PER ECR# S000005	11/3/03	DON	RAL	MATERIAL:	.016 ±.001 THICK BRASS, PRETINNED			DWG SIZE B
REV.	DESCRIPTION	DATE	DR.	JZ	FINISH:	SEE MATERIAL			
				CHINA					

Ark-Les CORPORATION STOUGHTON, MA

ORIGINAL IF RED

PART NAME FEMALE TERMINAL OPEN BARREL, ROLL RAIL .250 X .032, AWG #16-#14

CAD#: 83000131614-CUST-REVB.drw

P/N: 83000131614

REV
B