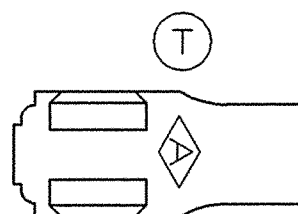
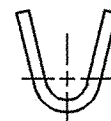
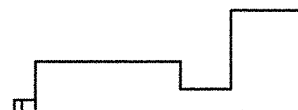
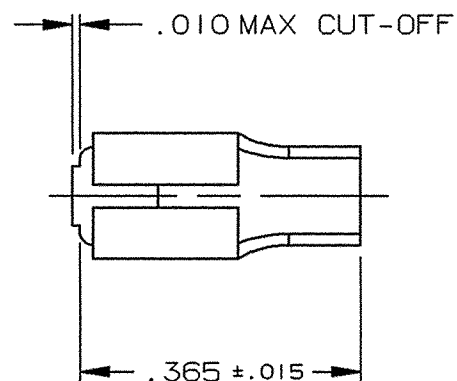
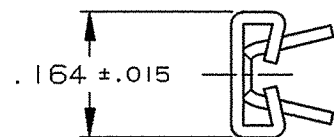


DEPT	
1	1
2	
3	
4	2
5	
6	
7	
8	
9	
10	
11	
12	
NC	
JZ	

PART NAME: FEMALE TERMINAL

PART NO: 3650H 1/-2

PART NUMBER	MATERIAL	FINISH
3650H 1A-2	.016 ±.001 THICK BRASS	PRETINNED
3650H 1AB-2		NONE



ARK-LES
UNCONTROLLED

- NOTES:
1. TO ACCEPT A .110/.125 X .014 MALE TAB.
 2. TO ACCOMMODATE #16 - #22 GAUGE WIRE.
 3. RECOMMENDED STRIP LENGTH: 1/8 ±1/32.
 4. FOR LOOSE PIECE PARTS ADD SUFFIX "-1" TO PART NUMBER (i.e. 3650H 1A-2-1).
 5. FOR STANDARD REELING SEE FIGURE 1.
 6. FOR REVERSE REELING ADD SUFFIX "R" TO PART NUMBER (i.e. 3650H 1A-2R).
 7. INSERTION WITHDRAWAL FORCES TO COMPLY WITH UL 310 WHEN USING TEST TAB CS3650M19-20.

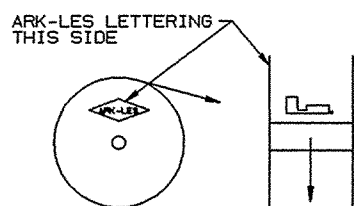


FIGURE 1
STANDARD REELING
(I.E. 3650H 1A-2)

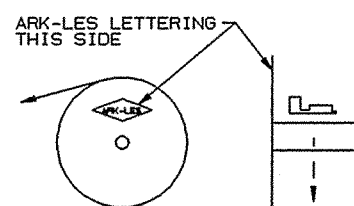
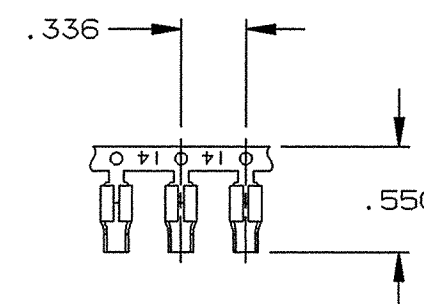


FIGURE 2
REVERSE REELING
(I.E. 3650H 1A-2R)



FABRICATED TERMINAL STRIP

SCALE 1=1

			PROD. REL.	63389	6/27/62	BA	TOLERANCES UNLESS OTHERWISE SPECIFIED:		
			QUOTE REL.	63389	6/27/62	BA	DECIMALS ±.010	METRIC ±0.25mm	ANGLES ±1°
			DR:	R. TASTULA	11/18/02		MATERIAL: SEE TABLE		
			CHK'D:	RWT.	11-21-02		FINISH: SEE TABLE		
			APP:	JJS	12-13-02		PART NO: 3650H 1/-2		
T	REVISED & REDRAWN PER ECR #12437	11/18/02	RT	SUPERCEDES DWG. DATED:	8/12/81				
REV.	DESCRIPTION	DATE	DR.	SCALE: 4=1	CAD NO: BUM0010				

ORIGINAL IF RED