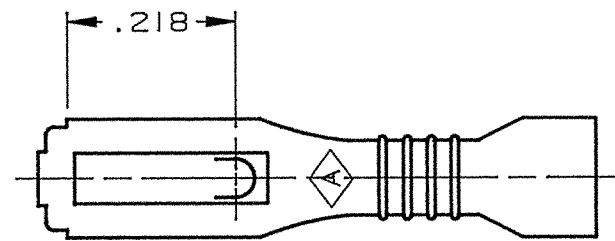
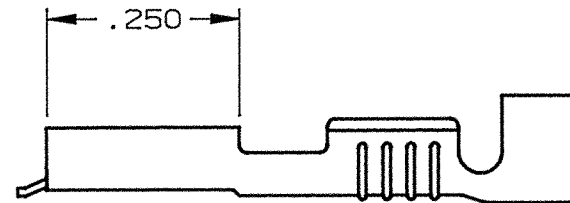
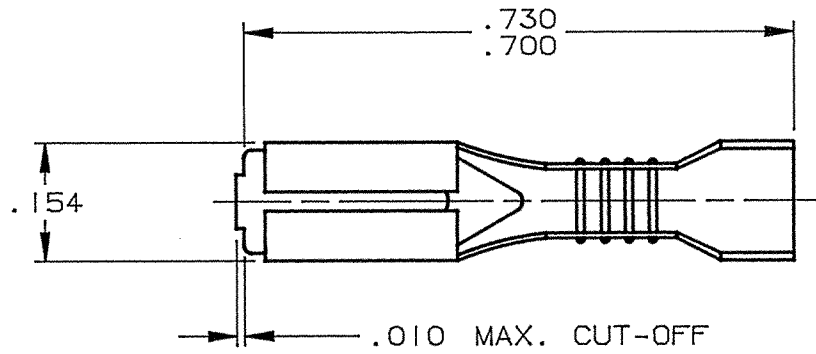


| | |
|------|---|
| DEPT | |
| 1 | I |
| 2 | |
| 3 | |
| 4 | 3 |
| 5 | |
| 6 | |
| 7 | |
| 8 | |
| 9 | |
| 10 | |
| 11 | |
| 12 | |
| NC | |
| JZ | |

PART NAME: FEMALE TERMINAL

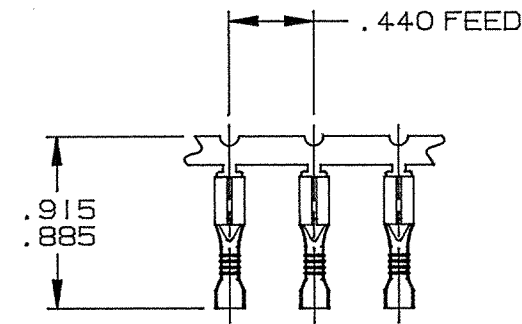
PART NO: 3650H103A/

| PART NO. | MATERIAL | FINISH |
|------------|------------|-----------|
| 3650H103A | .010 BRASS | PRETINNED |
| 3650H103AB | .010 BRASS | NONE |



NOTES:

- MUST ACCEPT MALE TAB .110/.125 X .032.
- WIRE RANGE: #18-#24 AWG.
- INSULATION RANGE: .040 - .090 DIA.
- FOR REVERSE REELING ADD SUFFIX "R" TO PART NUMBER (i.e. 3650H103AR).
- FOR LOOSE PIECE PARTS ADD "-1" TO PART NUMBER (i.e. 3650H103A-1).
- RECOMMENDED STRIP LENGTH: 7/32 ± 1/32.

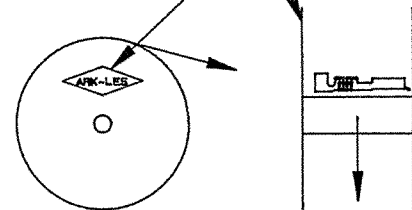


FABRICATED TERMINAL STRIP

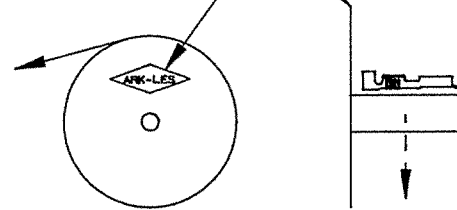
SCALE 1=1

ARK-LES LETTERING THIS SIDE

ARK-LES LETTERING THIS SIDE



STANDARD REELING
(I.E. 3650H103A)



REVERSE REELING
(I.E. 3650H103AR)

ARK-LES
UNCONTROLLED

| | | | | | | | |
|------|----------------------------------|--------|-------------------------|------------------------|-----------------|----|--|
| | | | PROD. REL. | PER D6 | 10/3/74 | RW | TOLERANCES UNLESS OTHERWISE SPECIFIED: |
| | | | QUOTE REL. | | | | DECIMALS ±.010 METRIC ±0.25mm ANGLES ±1° |
| | | | DR: R. TASTULA | | 9/1/98 | | MATERIAL: SEE TABLE |
| | | | CHK'D: R.W.T. | | 9-8-98 | | FINISH: SEE TABLE |
| | | | APP: <i>[Signature]</i> | | 9-14-98 | | PART NO: 3650H103A/ |
| P | REVISED & REDRAWN PER ECR #11590 | 9/1/98 | RT | SUPERCEDES DWG. DATED: | 3/3/87 | | |
| REV. | DESCRIPTION | DATE | DR. | SCALE: 4=1 | CAD NO: BUM0023 | | |

ORIGINAL IF RED