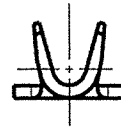
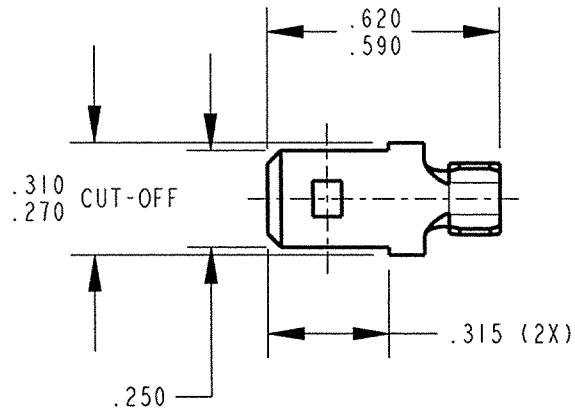
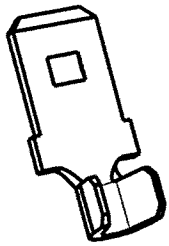


CUSTOMER DRAWING

P/N: 3000M 1A/-2

REV
AC



PART NUMBER	MATERIAL	FINISH	UL	SP
3000M 1A-2	.032 THICK BRASS	PRETINNED	YES	NO
3000M 1AB-2		NONE	YES	NO
3000M 1AD-2		POST TIN PLATE	NO	NO

NOTES:

1. TO MATE WITH A STANDARD .250 X .032 FEMALE QUICK-CONNECT
2. TO ACCOMMODATE #14-#20 AWG WIRE
3. RECOMMENDED WIRE STRIP LENGTH: 3/16 ± 1/32.
4. MALE TAB TO CONFORM TO UL 310.
5. FOR LOOSE PIECE PARTS ADD SUFFIX "-1" TO PART NUMBER (I.E. 3000M1A-2-1).
6. FOR STANDARD REELING SEE FIGURE 1.
7. FOR REVERSE REELING ADD SUFFIX "R" TO PART NUMBER (I.E. 3000M 1A-2R) SEE FIGURE 2.

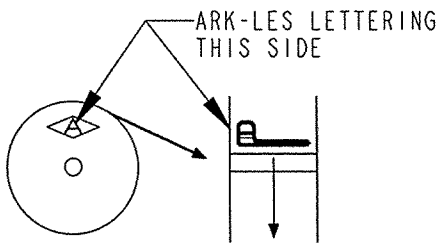


FIGURE 1
STANDARD REELING
(I.E. 3000M 1A-2)

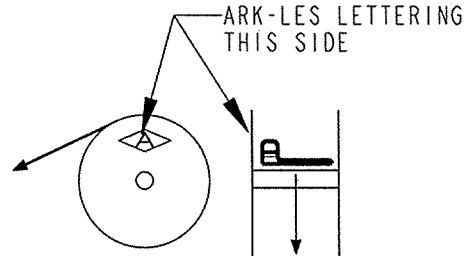
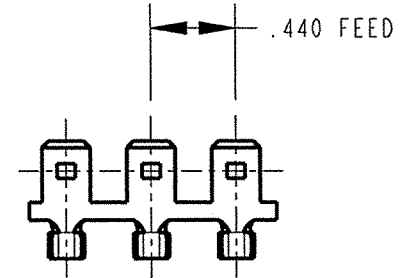


FIGURE 2
REVERSE REELING
(I.E. 3000M 1A-2R)

ARK-LES
UNCONTROLLED

WINDING DIAGRAM



FABRICATED TERMINAL STRIP
SCALE:FULL

				PRINT DIST.	PROD. REL.	ECR 6460	9/29/87	CHK'D	TOLERANCES UNLESS OTHERWISE SPECIFIED
				DEPT #	QUOTE REL.			APP.	
				ENG 1	DRAWN BY	BJC	2/9/05		DECIMALS ± .015
				SALES	SUPERSEDES DWG. DATED:		6/19/95		METRIC ± 0.25mm
				STO 1	SCALE 2:1		DO NOT SCALE PRINT		ANGLES ± 1°
AC	REDRAWN PER ECR #S000086	2/9/05	BJC	RAL	MATERIAL: SEE TABLE				3RD ANGLE PROJECTION DWG SIZE: A
REV	DESCRIPTION	DATE	DR.	JZ	FINISH: SEE TABLE				
				CHINA					

Ark-LES CORPORATION STOUGHTON, MA

ORIGINAL IF RED

PART NAME CUSTOMER DRAWING MALE TERMINAL
CAD#: 3000M_1A-2-REVAC_CUST.DRW
P/N: 3000M 1A/-2
REV AC