

DEPT	
1	1
2	
3	3
4	
5	
6	
7	
8	
9	
10	
11	
12	
NC	
JZ	

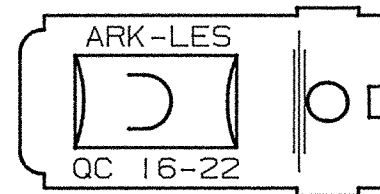
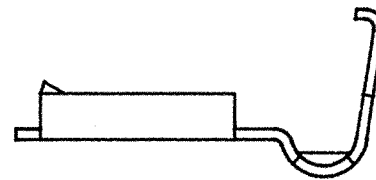
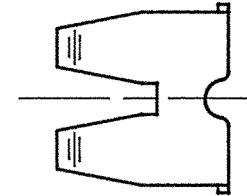
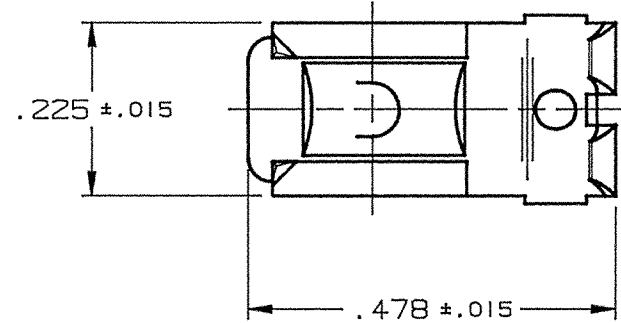
PART NAME:

FEMALE TERMINAL

PART NO:

3500H413/

PART NO.	MATERIAL	FINISH
3500H413A	.014 THICK BRASS	PRETINNED
3500H413AB		NONE



(K)

NOTES:

1. TO ACCEPT A .187 X .032 MALE TAB.
2. TO ACCOMMODATE #16 - #22 GAUGE WIRE.
3. RECOMMENDED STRIP LENGTH: 9/32 ± 1/32.
4. INSERTION/WITHDRAWAL FORCES TO COMPLY WITH UL 310.
5. FOR LOOSE PIECE PARTS ADD SUFFIX "-1" TO PART NUMBER. (i.e. 3500H413A-1)
6. FOR STANDARD REELING SEE FIGURE 1.
7. FOR REVERSE REELING ADD SUFFIX "R" TO PART NUMBER. (i.e. 3500H413AR) SEE FIGURE 2.

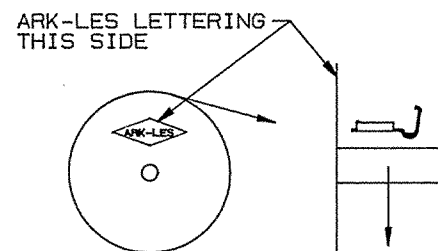
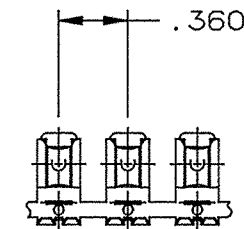


FIGURE 1
STANDARD REELING
(I.E. 3500H413A)

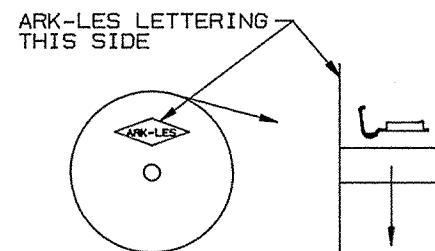


FIGURE 1
REVERSE REELING
(I.E. 3500H413AR)

(K)

ARK-LES
UNCONTROLLED

FABRICATED TERMINAL STRIP

SCALE 1=1

			PROD. REL.	JM 20B	6/25/75	JJB	TOLERANCES UNLESS OTHERWISE SPECIFIED:		
			QUOTE REL.	DG 505	2/6/75	RW	DECIMALS ±.010	METRIC ±0.25mm	ANGLES ±1°
			DR:	B J CARUTHERS		8/21/96	MATERIAL: SEE TABLE		
			CHK'D:	R.W.T.		8-27-96	FINISH: SEE TABLE		
			APP:	COR		8-27-96	PART NO: 3500H413/		
			SUPERCEDES DWG. DATED:			9/5/86	ORIGINAL IF RED		
REV.	DESCRIPTION	DATE	DR.	SCALE: 4=1	CAD NO: BTU0026				