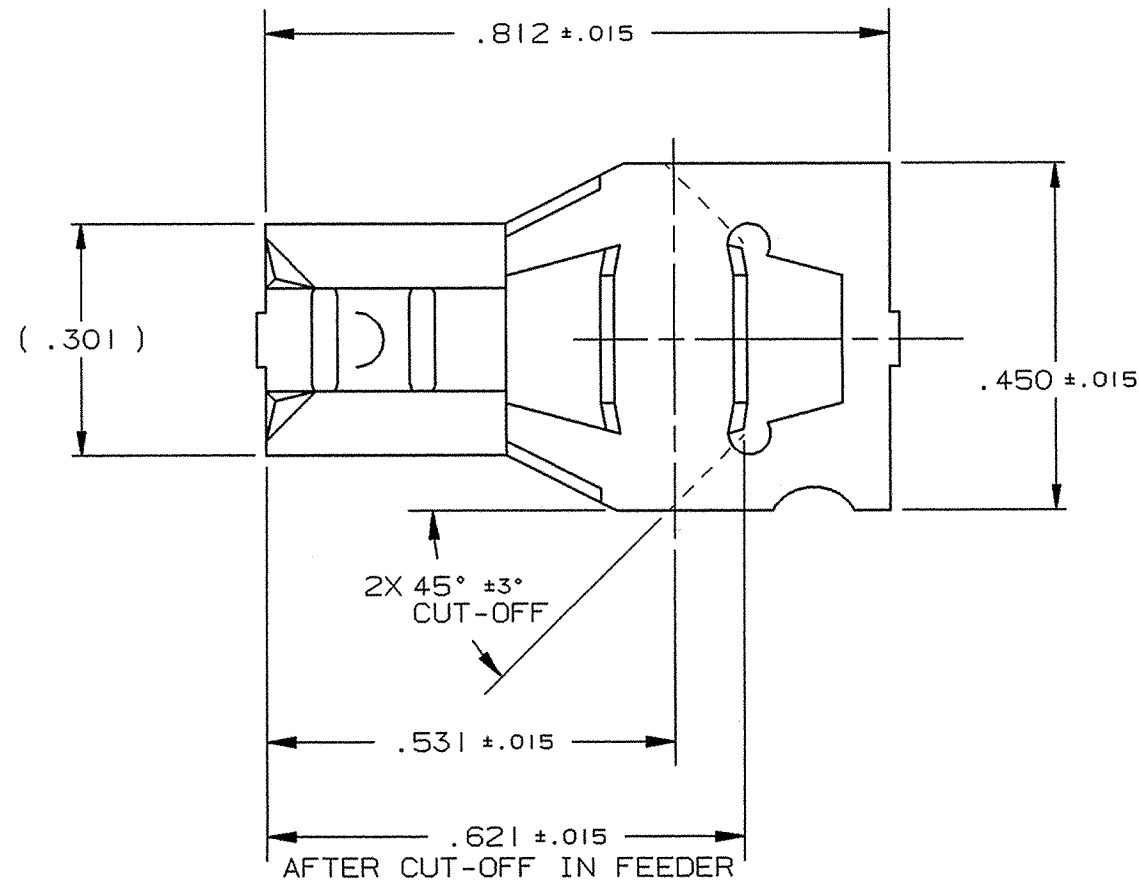


DEPT	
1	1
2	
3	
4	2
5	
6	
7	
8	
9	
10	
11	
12	
NC	
JZ	

PART NAME: FEMALE TERMINAL

PART NO: 3000H 405A/



PART NUMBER	MATERIAL	FINISH
3000H 405A	.018 ±.001 THICK BRASS,	PRETINNED
3000H 405AB		NONE
3000H 405AC		SILVER PLATE

- NOTES:  
 1. TO ACCEPT .250 X .032 MALE TAB.  
 2. TO ACCOMMODATE #12 - #16 GAUGE WIRE.  
 3. RECOMMENDED STRIP LENGTH: 13/32 ±1/32.  
 4. FOR REELING SEE FIGURE 1.

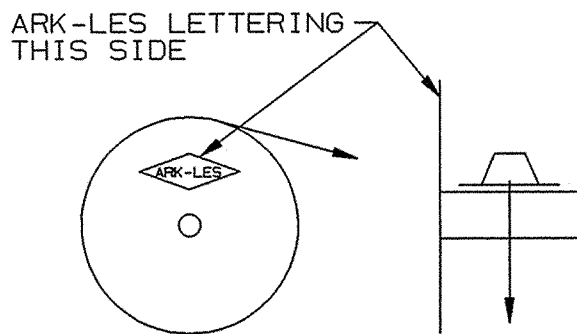
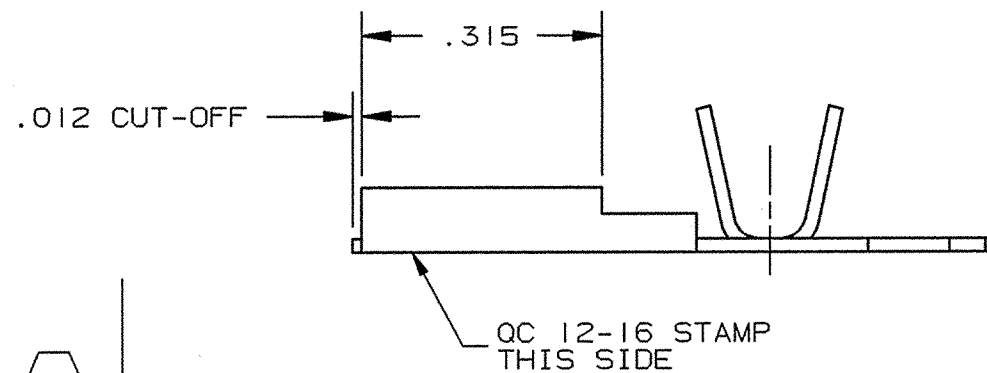
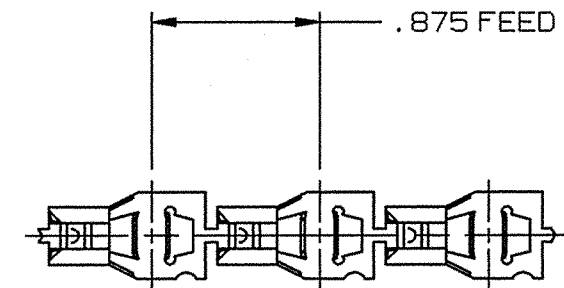


FIGURE 1  
STANDARD REELING

**ARK-LES**  
**UNCONTROLLED**



FABRICATED TERMINAL STRIP

SCALE: FULL

				PROD. REL.	DG 689	3/27/75	PC	TOLERANCES UNLESS OTHERWISE SPECIFIED:		
				QUOTE REL.	TFP 27	2/7/75	RW	DECIMALS ±.010	METRIC ±0.25mm	ANGLES ±1°
				DR:	R. TASTULA	12/20/01		MATERIAL: SEE TABLE		
				CHK'D:	R.W.T.	12-26-01		FINISH: SEE TABLE		
				APP:	Jgg	1-7-02		PART NO: 3000H 405A/		
S	REVISED & REDRAWN PER ECR #12243	12/20/01	RT	SUPERCEDES DWG. DATED:	3/24/76					
REV.	DESCRIPTION	DATE	DR.	SCALE: 4:1	CAD NO: BT00111					

ORIGINAL IF RED