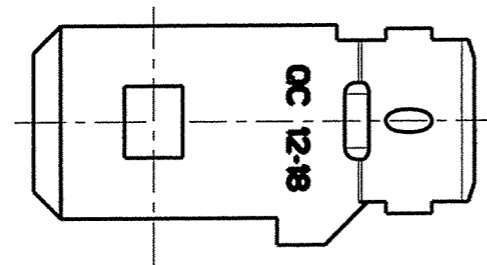
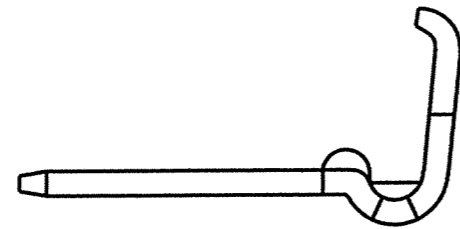
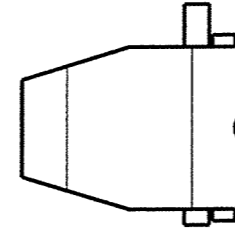
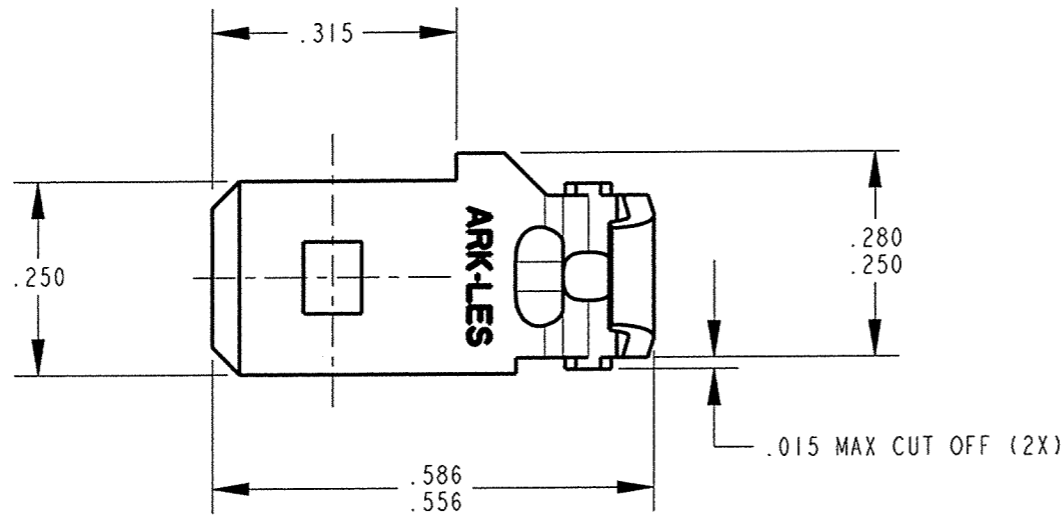
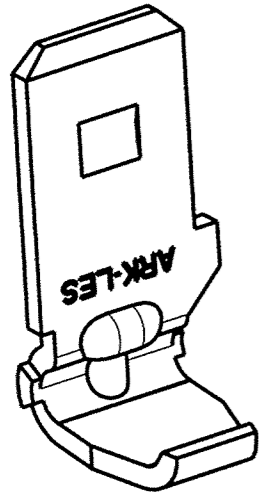


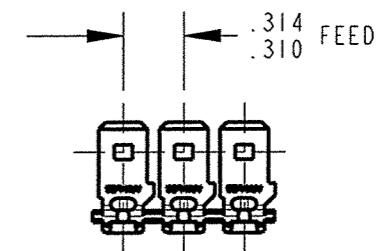
CUSTOMER DRAWING

P/N: 3000M 3C / REV K



- NOTES:
1. TO ACCEPT #12-#18 AWG WIRE
  2. TO ACCEPT A STANDARD .250 X .032 FEMALE QUICK-CONNECT
  3. RECOMMENDED WIRE STRIP LENGTH: 9/32 ± 1/32.
  4. FOR LOOSE PIECE PARTS ADD SUFFIX "-1" TO PART NUMBER (E.G. 3000M 3C-1).
  5. MALE TAB TO CONFORM TO UL 310.
  6. FOR STANDARD REELING SEE FIGURE 1.
  7. FOR REVERSE REELING ADD SUFFIX "R" TO PART NUMBER (E.G. 3000M 3CR).

PART NUMBER	MATERIAL	FINISH	UL	SP
3000M 3C	.032 THK BRASS	PRETINNED	YES	YES
3000M 3CB	.032 THK BRASS	NONE	YES	YES
3000M 3CN	.032 THK BRASS	PRE-NICKEL	NO	NO



FABRICATED TERMINAL STRIP SCALE:FULL

ARK-LES UNCONTROLLED

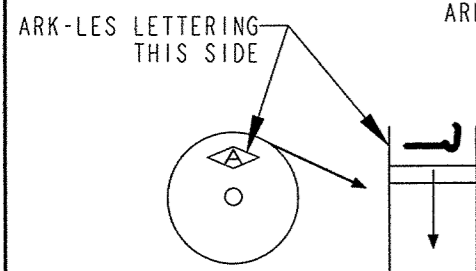


FIGURE 1 STANDARD REELING (E.G. 3000M 3C)

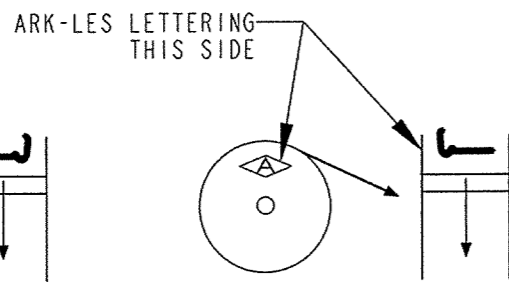


FIGURE 2 REVERSE REELING (E.G. 3000M 3CR)

PRINT DIST.	PROD. REL.	21833	11/17/55	CHK'D	TOLERANCES UNLESS OTHERWISE SPECIFIED	 STOUGHTON, MA <b>ORIGINAL IF RED</b>
DEPT #	QUOTE REL.			02/15/05 APP.	DECIMALS ± .010	
ENG 1	DRAWN BY	BJC	2/9/05		METRIC ± 0.25mm	PART CUSTOMER DRAWING NAME MALE FLAG TERMINAL CAD#: 3000M_3C-REVK_CUST.DRW P/N: 3000M 3C / REV K
SALES	SUPERSEDES DWG. DATED:		12/6/99		ANGLES ± 1°	
STO 7	SCALE	4:1		DO NOT SCALE PRINT	 3RD ANGLE PROJECTION DWG SIZE: B	
K	REDRAWN PER ECR #	S000073	2/9/05	BJC	MATERIAL: SEE TABLE	
REV.	DESCRIPTION		DATE	DR.	FINISH: SEE TABLE	