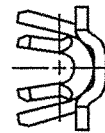
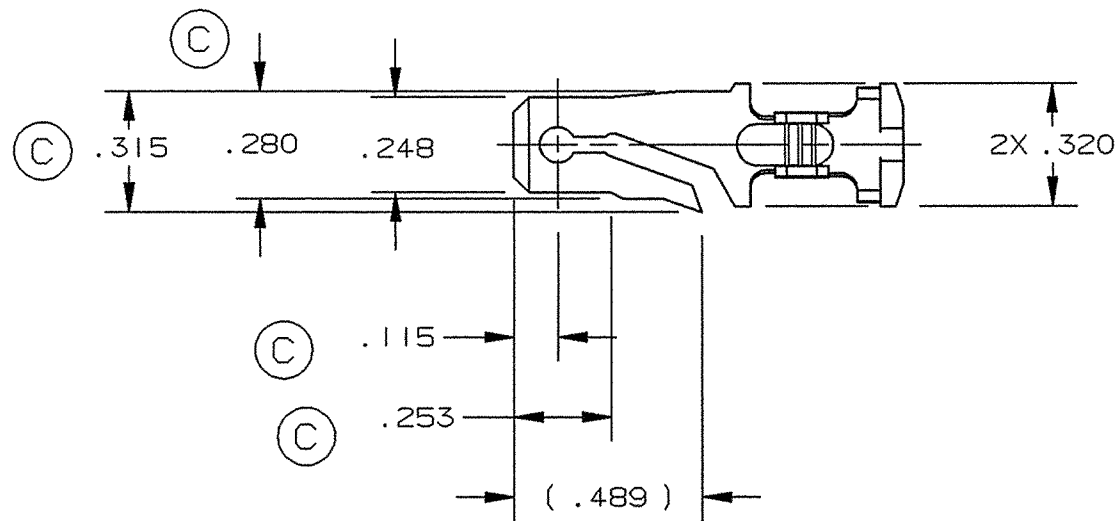


DEPT	
1	2
2	
3	
4	2
5	
6	
7	
8	
9	
10	
11	
12	
NC	
JZ	

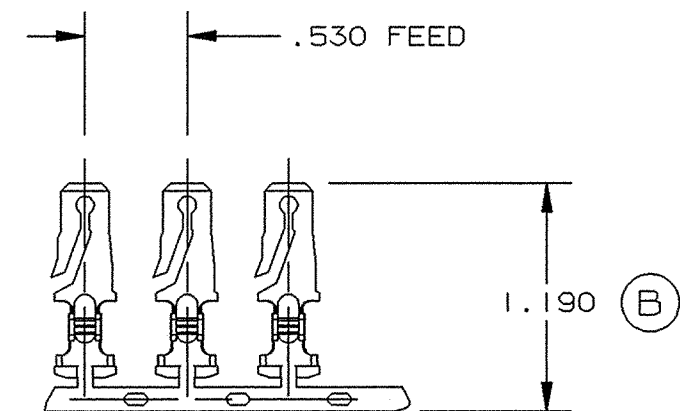
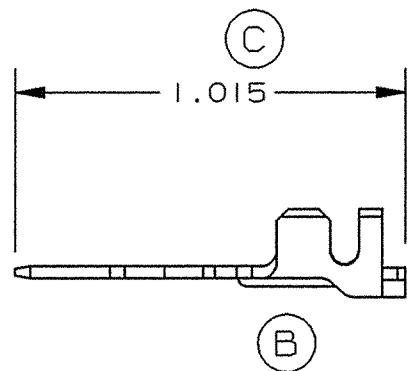
PART NAME: MALE LOCK-IN TERMINAL

PART NO: 3000M 774A/

PART NO.	MATERIAL	FINISH
3000M 774A	.032 BRASS	PRETINNED
3000M 774AB		NONE



- NOTES:
1. WIRE RANGE: #14 - #20 AWG.
  2. INSULATION DIAMETER RANGE: .080-.120.
  3. RECOMMENDED STRIP LENGTH: 3/16 ±1/32.
  4. FOR LOOSE PIECE PARTS ADD SUFFIX "-1" TO PART NUMBER. (i.e. 3000M 774A-1)

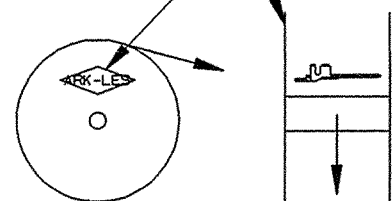


FABRICATED TERMINAL STRIP

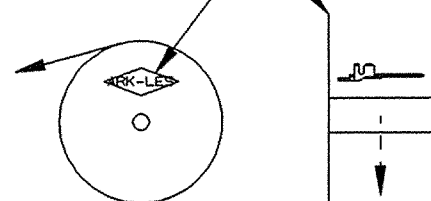
SCALE 1:1

ARK-LES LETTERING THIS SIDE

ARK-LES LETTERING THIS SIDE



STANDARD REELING  
(I.E. 3000M 774A)



REVERSE REELING  
(I.E. 3000M 774AR)

**ARK-LES**  
**UNCONTROLLED**

			PROD. REL.	ECR12571	7/2/03	RT	TOLERANCES UNLESS OTHERWISE SPECIFIED:
			QUOTE REL.				DECIMALS ±.010   METRIC ±0.25mm   ANGLES ±1°
			DR:	R. TASTULA	7/1/03		MATERIAL: SEE TABLE
C	REVISED PER ECR #S000021	9/24/03	RT	CHK'D: <i>R. Donnell</i>	10/9/03		FINISH: SEE TABLE
B	REVISED PER ECR #S000011	8/18/03	RT	APP: <i>NTA</i>	10-9-03		PART NO: 3000M 774A/
A	PROD. REL. PER ECR #12571	7/1/03	RT	SUPERCEDES DWG. DATED:			
REV.	DESCRIPTION	DATE	DR.	SCALE: 2:1	CAD NO: BTP0058		

ORIGINAL IF RED