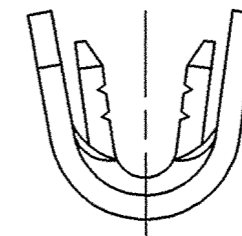
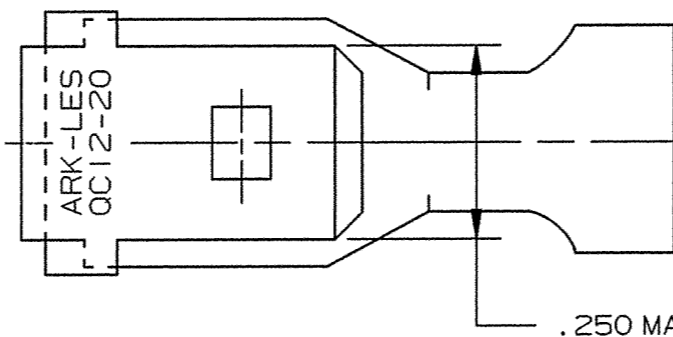
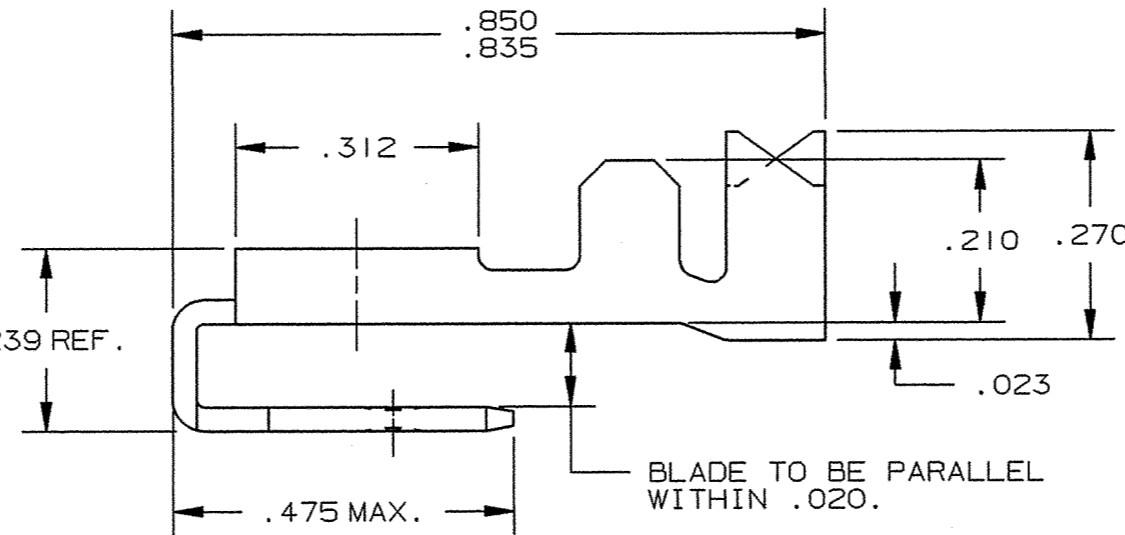
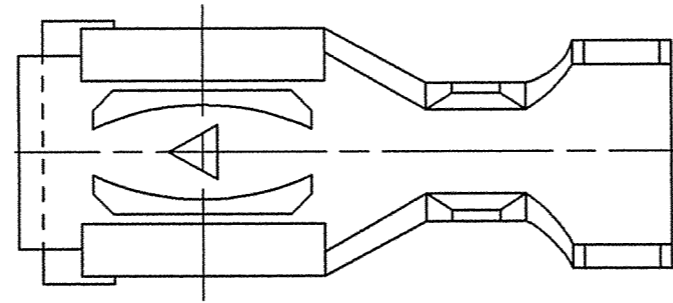
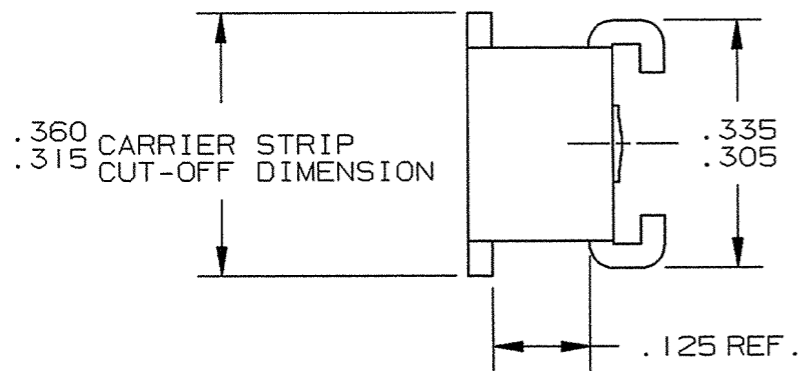


DEPT	
1	1
2	
3	
4	2
5	
6	
7	
8	
9	
10	
11	
12	
NC	
JZ	

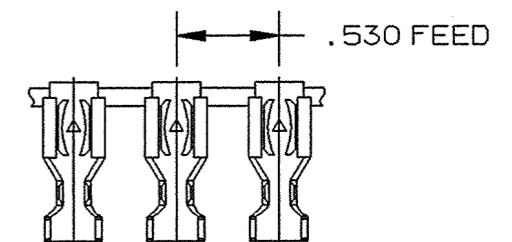
PART NAME: FEMALE & MALE TERMINAL

PART NO: 3000H 21A/

PART NUMBER	MATERIAL	FINISH	Q.C. STAMP
3000H 21A	.032 ±.001 THICK BRASS	PRETINNED	YES
3000H 21AB	.032 ±.001 THICK BRASS	NONE	YES
3000H 21AC	.032 ±.001 THICK BRASS	SILVER PLATE	YES



**ARK-LES**  
**UNCONTROLLED**



FABRICATED TERMINAL STRIP

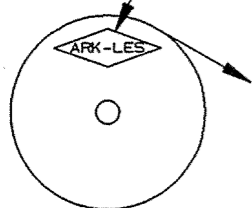
SCALE: FULL

NOTES:

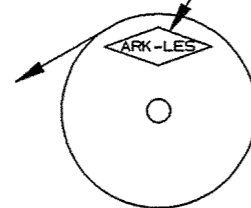
- TO ACCEPT A .250 X .032 MALE TAB.
- TO ACCOMMODATE #12-#20 GAUGE WIRE.
- INSULATION DIAMETER RANGE: .150-.210.
- RECOMMENDED STRIP LENGTH: 3/16 ± 1/32.
- FOR PARTS LESS DIMPLE ADD SUFFIX "-3" TO PART NUMBER. (i.e. 3000H 21A-3)
- FOR REVERSE REELING ADD SUFFIX "R" TO PART NUMBER AS SHOWN.
- FOR LOOSE PIECE PARTS ADD SUFFIX "-1" TO PART NUMBER (i.e. 3000H 21A-1).
- INSERTION/WITHDRAWAL FORCES TO BE AS FOLLOWS WHEN USING MALE TEST TAB 3000M 68H-1:  
 1ST INSERTION: 15.0 LBS MAX. (GS)  
 6.0 LBS MIN. (GU)  
 1ST WITHDRAWAL: 17.0 LBS MAX. (GS)  
 6.0 LBS MIN. AVERAGE  
 4.0 LBS MIN. INDIVIDUAL  
 6TH WITHDRAWAL: 5.0 LBS MIN. AVERAGE  
 4.0 LBS MIN. INDIVIDUAL

ARK-LES LETTERING THIS SIDE

ARK-LES LETTERING THIS SIDE



STANDARD REELING  
(I.E. 3000H 21A)



REVERSE REELING  
(I.E. 3000H 21AR)

REELING DIAGRAMS

REV.	DESCRIPTION	DATE	DR.	SCALE: 4:1	CAD NO: BT00047	PART NO: 3000H 21A/
GU	REVISED PER ECR #12298	5/31/02	RT	CHK'D: R.W.T.	6-5-02	MATERIAL: SEE TABLE
GT	REVISED PER ECR #12077	9/22/00	RT	APP: R.T.B.	6-10-02	FINISH: SEE TABLE
GS	REVISED & REDRAWN PER ECR #10434	4/5/95	RT	SUPERCEDES DWG. DATED: 1/11/93		
				PROD. REL. 49457 7/5/60 HK		TOLERANCES UNLESS OTHERWISE SPECIFIED:
				QUOTE REL. 40906 3/25/60 BA		DECIMALS ±.010 METRIC ±0.25mm ANGLES ±1°
				DR: R. TASTULA 4/5/95		

ORIGINAL IF RED