

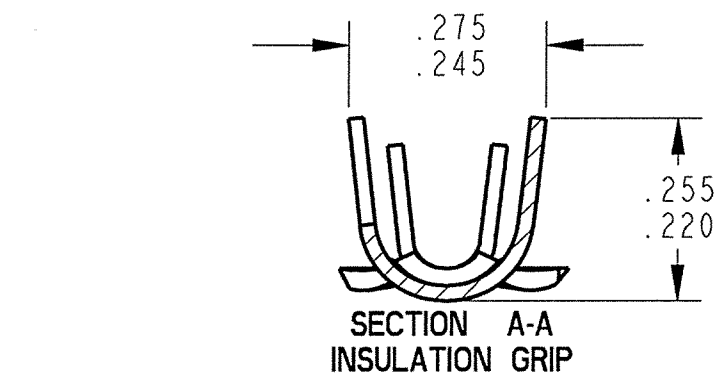
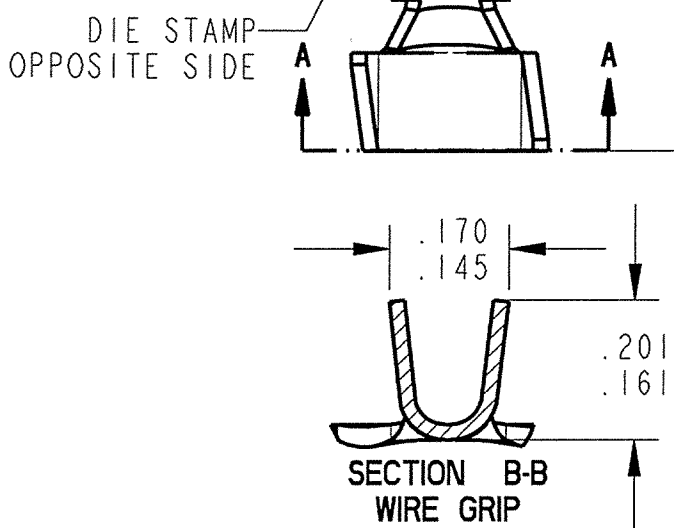
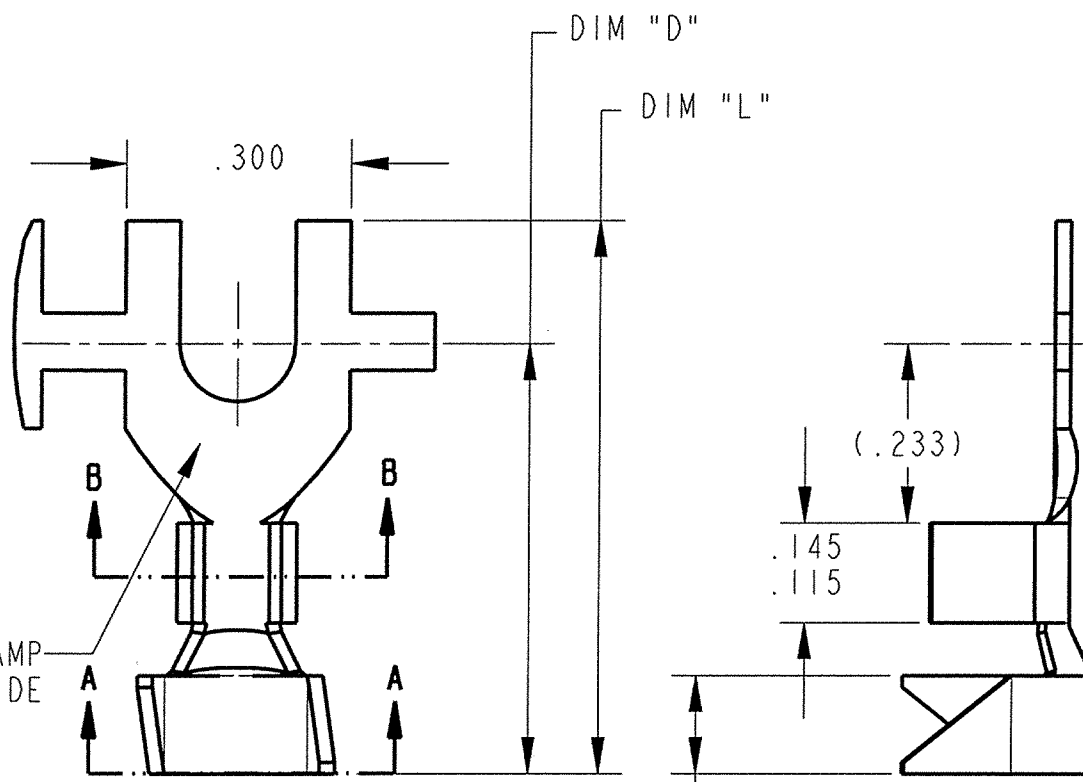
SCALE 2:1

NOTE:
 1. WIRE RANGE AWG #20-14
 2. FEED DIM. .400

CUSTOMER DRAWING

P/N: 4000-3A
 REV V

PART NUMBER	INSULATOR DIAMETER	STUD SIZE	STUD HOLE DIA.	MAT'L THK.	MATERIAL FINISH	DIM "L"	DIM "D"
3A1-4	.075-.175	#4	.124	.020	BRASS	.720	.560
3A2-4					PRETINNED BRASS		
3A3-4				BRASS			
3A4-4				PRETINNED BRASS			
3A1-3	NO INS.	#4	.124	.020	BRASS	.527	.356
3A2-3					PRETINNED BRASS		
3A3-3				BRASS			
3A4-3				PRETINNED BRASS			
3A1-6	.075-.175	#6	.150	.020	BRASS	.720	.560
3A2-6					PRETINNED BRASS		
3A3-6				BRASS			
3A4-6				PRETINNED BRASS			
3A1-5	NO INS.	#6	.150	.020	BRASS	.527	.356
3A2-5					PRETINNED BRASS		
3A3-5				BRASS			
3A4-5				PRETINNED BRASS			
3A1-8	.075-.175	#8	.176	.020	BRASS	.720	.560
3A2-8					PRETINNED BRASS		
3A3-8				BRASS			
3A4-8				PRETINNED BRASS			
3A1-7	NO INS.	#8	.176	.020	BRASS	.527	.356
3A2-7					PRETINNED BRASS		
3A3-7				BRASS			
3A4-7				PRETINNED BRASS			
3A1-10	.075-.175	#10	.202	.020	BRASS	.720	.560
3A2-10					PRETINNED BRASS		
3A3-10				BRASS			
3A4-10				PRETINNED BRASS			
3A1-9	NO INS.	#10	.202	.020	BRASS	.527	.356
3A2-9					PRETINNED BRASS		
3A3-9				BRASS			
3A4-9				PRETINNED BRASS PCS1007			
3A2-8AD	.075-.175	#8	.176 .168	.020	BRASS- POST TIN PLATE	.720	.560
3A11-8	.075-.175	#8	.176 .168	.020	H.H. C.R. STEEL NICKEL PLATE	.720	.560



ARK-LES
UNCONTROLLED

PRINT DIST.	PROD. REL.	PER CA.	3-10-61	CHK'D	TOLERANCES UNLESS OTHERWISE SPECIFIED
DEPT #	QUOTE REL.			02/01/04	DECIMALS ±.010
ENG 1	DRAWN BY	D'O'NEILL	5/24/04	APP.	METRIC ±0.25mm
SALES 1	SUPERSEDES DWG. DATED:	5-27-87		6-1-04	ANGLES ±1°
STO 6	SCALE	4:1	DO NOT SCALE PRINT		3RD ANGLE PROJECTION
RAL	MATERIAL:	SEE TABLE			DWG SIZE B
JZ	FINISH:	SEE TABLE			
CHINA					

ArkLes CORPORATION STOUGHTON, MA

ORIGINAL IF RED

PART NAME **TERMINAL, SPADE**

CAD#: 4000-3A-REV-V-CUST.DWG

P/N: 4000-3A

REV V