

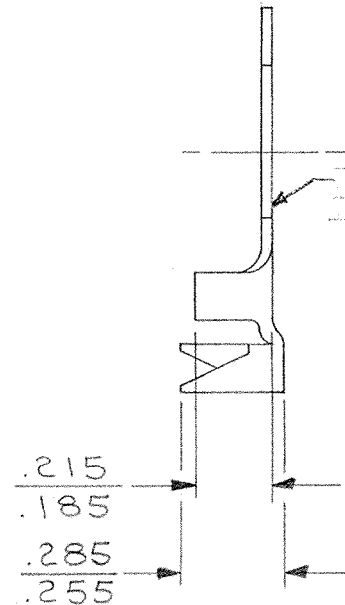
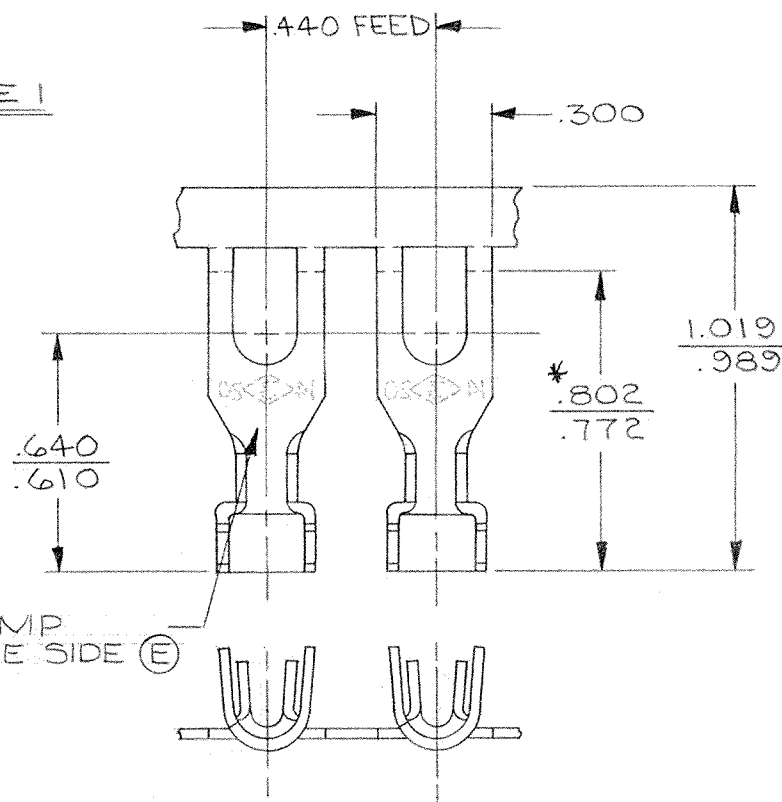
DEPT.	1
1	1
2	
3	
4	1
5	
6	
7	
8	
9	
10	
11	
12	
TOOLED	

TERMINAL - SPADE

CUSTOMER DWG.

SHEET 1 OF 2

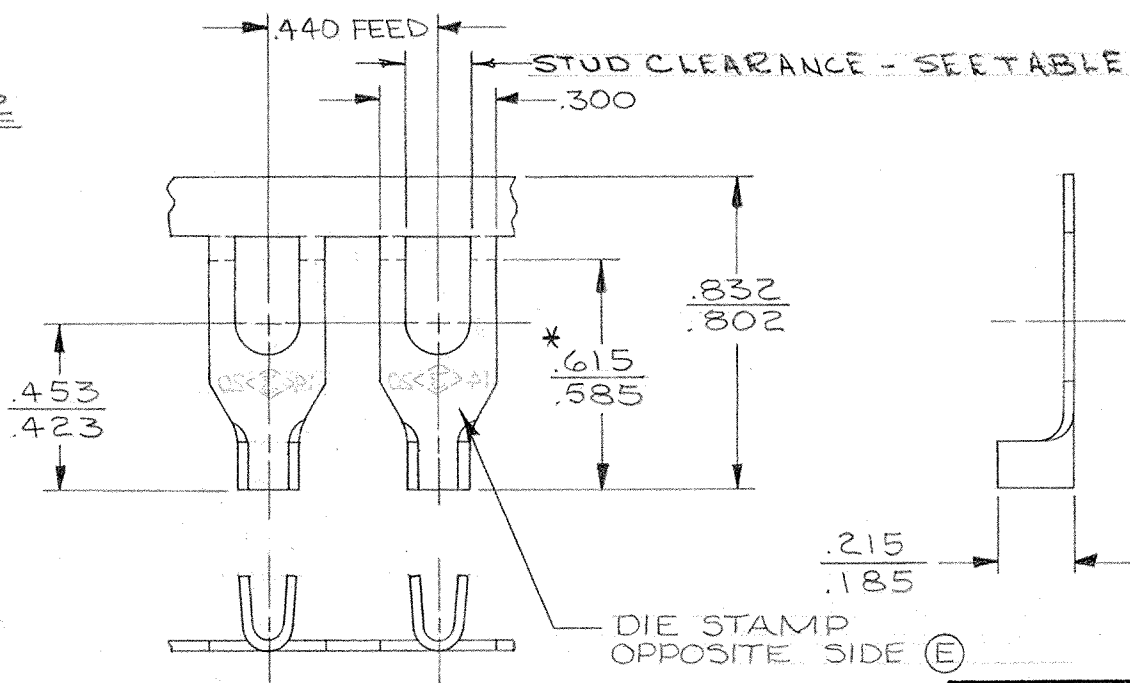
TYPE 1



NOTES:

1. TO ACCEPT #14 - #20 AWG.
2. STRIP LENGTH: 7/32 ± 1/32.
3. \* FEEDER CUT-OFF DIMENSION

TYPE 2



PART NO.	TYPE	INSULATION DIAMETER	STUD SIZE	STOCK THK. I.001	FINISH
A3A1-6	1	.075-.175	6	.020	NONE
A3A2-6	1				PRETINNED
A3A1-5	2	—	8	.020	NONE
A3A2-5	2				PRETINNED
A3A1-8	1	.075-.175	8	.020	NONE
A3A2-8	1				PRETINNED
A3A1-7	2	—	10	.020	NONE
A3A2-7	2				PRETINNED
A3A1-10	1	.075-.175	10	.020	NONE
A3A2-10	1				PRETINNED
A3A1-9	2	—	10	.020	NONE
A3A2-9	2				PRETINNED

**ARK-LES UNCONTROLLED**

ORIGINAL IF RED

F	OBS.:-A3A3-6, A3A4-6, A3A3-5, A3A4-5, A3A3-8, A3A4-8, A3A3-7, A3A4-7, A3A3-10, A3A4-10, A3A3-9 & A3A4-9; ECR 5290	5/8/85	DR	RELEASED FOR PRODUCTION	PER C.A.	TOLERANCES UNLESS OTHERWISE SPECIFIED:
E	DIE STAMP REV. DCR 726	2-26-75	KS	RELEASED FOR QUOTATION		DECIMALS ±.010 ANGLES ±1'
D	REVISED & REDRAWN DCR #659	1-5-76	P.C.	NEW DRAWING SUPERSEDES	4-5-63	DO NOT SCALE DRAWING
				DRAWN BY P COPE		MATERIAL BRASS - SEE TABLE
				CHECKED BY JJB		
				APPROVED BY [Signature]		FINISH SEE ABOVE TABLE

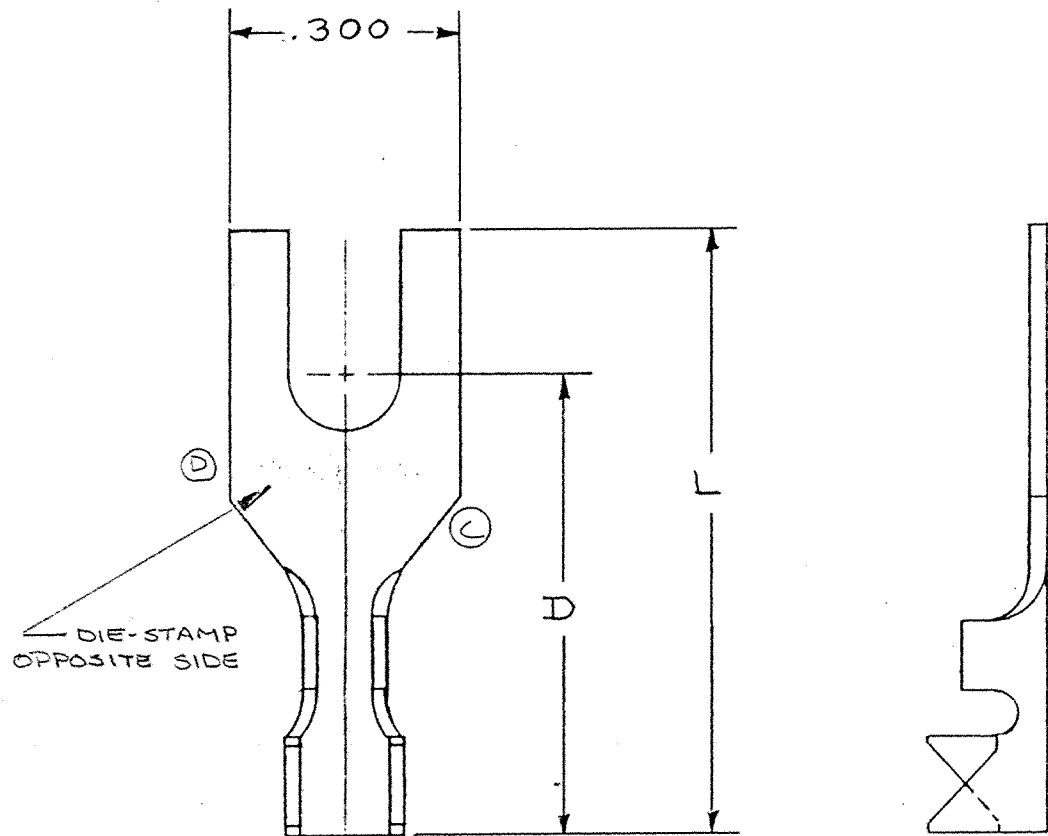
DATE OF DRAWING 1-5-76

SCALE 2 to 1

DATE OF PRINT

TERMINAL - SPADE

DEPT  
1  
2  
3  
4  
5  
6  
7  
8  
9  
10  
11  
12  
13  
14  
15  
16  
17  
18  
19  
20  
21  
22  
23  
24  
25  
26  
27  
28  
29  
30  
31  
32  
33  
34  
35  
36  
37  
38  
39  
40  
41  
42  
43  
44  
45  
46  
47  
48



NOTE:

- 1) WIRE RANGE #18 - #24
- 2) FEED DIM. .440

**ARK-LES**  
**UNCONTROLLED**



PART NO.	INS. DIA.	STUD SIZE	STOCK THICK.	MATERIAL & FINISH	L DIM.	D DIM.	REL. FOR QUOTE	DP #	REL. FOR PROD.
A3A1-6-3 A3A2-6-3	.075-.125	6	.020	BRASS PRE-TINNED BRASS	.787	.625	85786	31720 595 31720 596	85786 15673
A3A1-5-3 A3A2-5-3	NO INSULATION GRIP	6	.020	BRASS PRE-TINNED BRASS	.600	.438		31720 593 31720 594	15673 15673
A3A1-8-3 A3A2-8-3	.075-.125	8	.020	BRASS PRE-TINNED BRASS	.787	.625	85786	31720 599 31720 600	85786 15673
A3A1-7-3 A3A2-7-3	NO INSULATION GRIP	8	.020	BRASS PRE-TINNED BRASS	.600	.438		31720 597 31720 598	15673 15673
A3A1-10-3 A3A2-10-3	.075-.125	10	.020	BRASS PRE-TINNED BRASS	.787	.625		31720 603 31720 604	15673 15673
A3A1-9-3 A3A2-9-3	NO INSULATION GRIP	10	.020	BRASS PRE-TINNED BRASS	.600	.438		31720 601 31720 602	15673 15673
(A)									

				RELEASED FOR PRODUCTION	TOLERANCES UNLESS OTHERWISE SPECIFIED:		
E	ADDED NOTE 2 FOR FEED DCR 1192	1-28-77	R.B.	RELEASED FOR TOOLS	DECIMALS ±.010	FRACTIONS ±.010	ANGLES ±1°
D	DIE STAMP REVISED DCR 726	2-25-76	R.T.	RELEASED FOR QUOTATION	DO NOT SCALE DRAWING		
C	13 - 20 ADDED	4-8-74	P.C.	NEW DRAWING SUPERSEDES			
B	.625 & .438 WERE .650 / .463	3-23-73	R.T.	DRAWN BY <i>B.G.</i>	MATERIAL ~		
A	NEW PART NUMBERS ADDED	3-29-64	R.B.	CHECKED BY <i>ARF</i>	FINISH ~		
REVISIONS #15673				DATE	APP	APPROVED BY <i>ARF</i>	FINISH ~
DATE OF DRAWING JUNE 3, 1964				SCALE 4 TO 1	DATE OF PRINT DESTROY ALL PREVIOUS PRINTS		

ORIGINAL IN RED