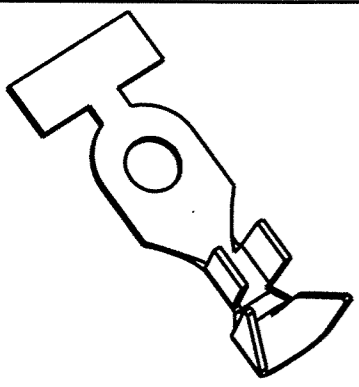


CUSTOMER DRAWING

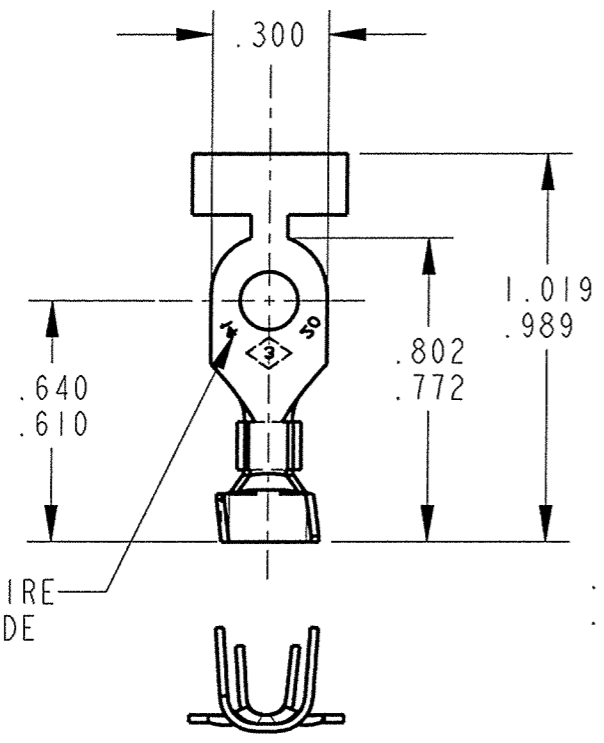
P/N: 4000-A3G

REV
S

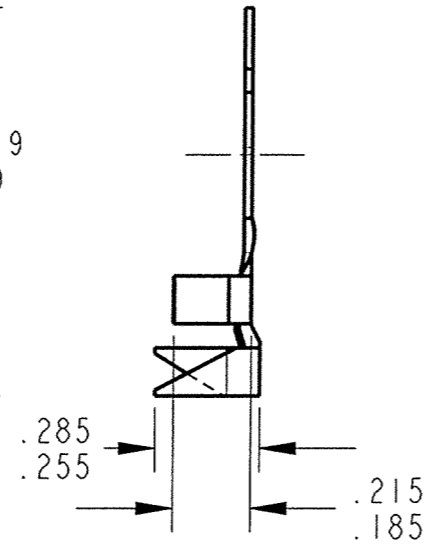
PART NUMBER	TYPE	INSULATION DIAMETER	STUD SIZE	MAT'L. THK.±.001	MATERIAL FINISH
A3G1-6	1	.075-.175	#6	.020	BRASS - NONE
A3G2-6	1			PRETINNED BRASS	
A3G3-6	1			.032	BRASS - NONE
A3G1-5	2	NO INS. GRIP	#6	.020	BRASS - NONE
A3G2-5	2			PRETINNED BRASS	
A3G1-8	1	.075-.175	#8	.020	BRASS - NONE
A3G2-8	1			PRETINNED BRASS	
A3G3-8	1			.032	BRASS - NONE
A3G1-7	2	NO INS. GRIP	#8	.020	BRASS - NONE
A3G2-7	2			PRETINNED BRASS	
A3G1-10	1	.075-.175	#10	.020	BRASS - NONE
A3G2-10	1			PRETINNED BRASS	
A3G3-10	1			.032	BRASS - NONE
A3G1-9	2	NO INS. GRIP	#10	.020	BRASS
A3G2-9	2			PRETINNED BRASS	



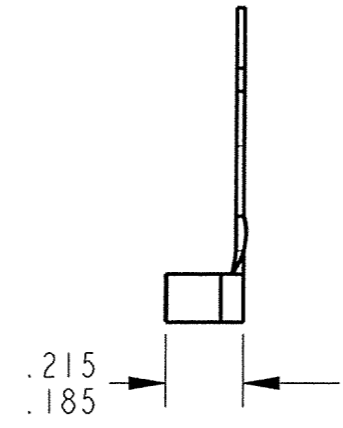
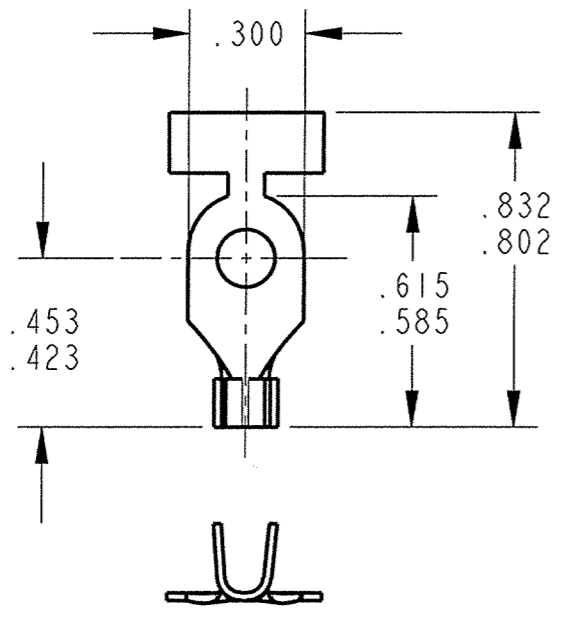
TYPE 1



ARK-LES I.D. AND WIRE RANGE OPPOSITE SIDE OPTIONAL



TYPE 2



- NOTE:
- TO ACCEPT WIRE RANGE AWG #20-14
FEED DIM. = .440
 - INSULATED WIRE STRIP LENGTH: $7/32 \pm 1/32$.
 - FOR PART WITH PAPER INTERLEAVING ADD SUFFIX "K" TO PART NUMBER (I.E. A3G1-6K).

ARK-LES UNCONTROLLED

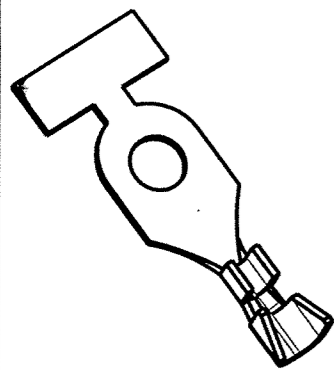
SHEET 1 OF 2

PRINT DIST.	PROD. REL.	PER CA.	CHK'D	TOLERANCES UNLESS OTHERWISE SPECIFIED	 STOUGHTON, MA
DEPT #	QUOTE REL.		DON 6/23/04	DECIMALS ±.010	
ENG 1	DRAWN BY D'ONEILL 6/23/04		APP.	METRIC ±0.25mm	ORIGINAL IF RED
SALES 1	SUPERSEDES DWG. DATED: 6-13-97		MSB 6-22-07	ANGLES ±1°	PART NAME TERMINAL, RING
STO 6	SCALE 4:1	DO NOT SCALE PRINT		3RD ANGLE PROJECTION	CAD#: 4000-A3G-REV-S.DRW
RAL	MATERIAL: BRASS - SEE TABLE			DWG SIZE B	P/N: 4000-A3G
JZ	FINISH: SEE TABLE				REV S
CHINA					

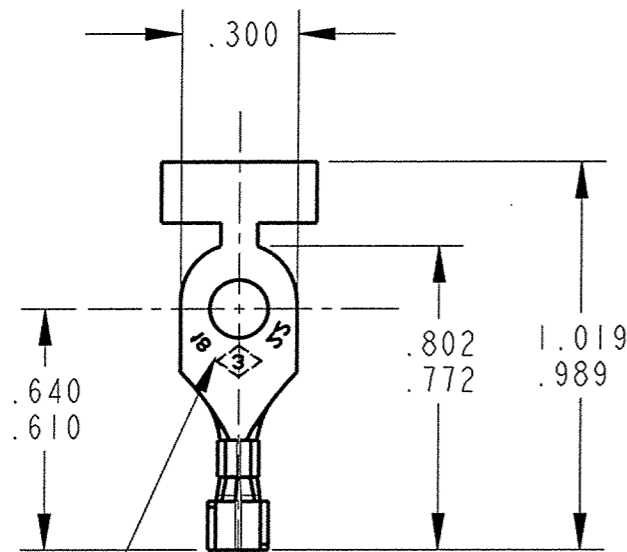
CUSTOMER DRAWING

P/N: 4000-A3G

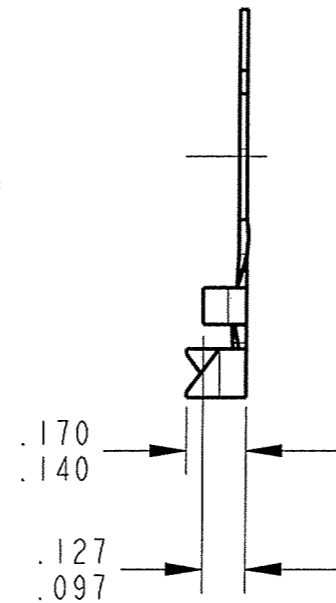
REV
S



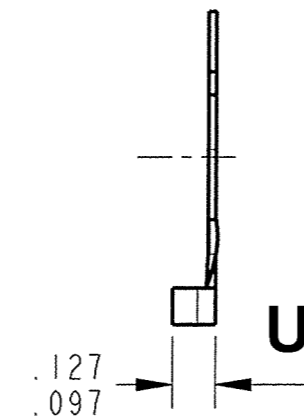
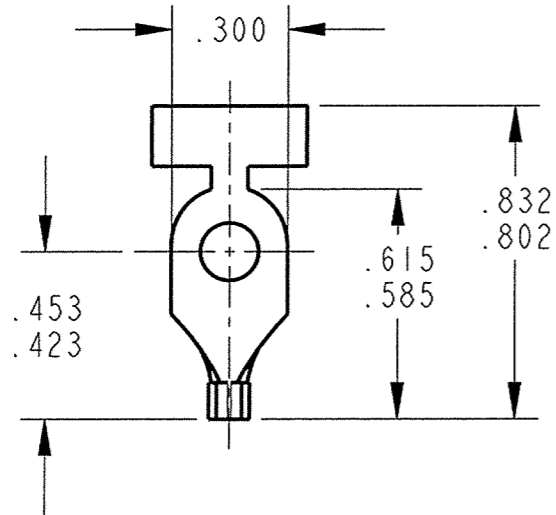
TYPE 1



ARK-LES I.D. AND WIRE RANGE. OPPOSITE SIDE OPTIONAL



TYPE 2



**ARK-LES
UNCONTROLLED**

PART NUMBER	TYPE	INSULATION DIAMETER	STUD SIZE	MAT'L. THK. ±.001	MATERIAL FINISH
A3G1-6-3	1	.075-.175	#6	.020	BRASS - NONE
A3G2-6-3	1				PRETINNED BRASS
A3G1-5-3	2	NO INS. GRIP	#6	.020	BRASS - NONE
A3G2-5-3	2				PRETINNED BRASS
A3G1-8-3	1	.075-.175	#8	.020	BRASS - NONE
A3G2-8-3	1				PRETINNED BRASS
A3G1-7-3	2	NO INS. GRIP	#8	.020	BRASS - NONE
A3G2-7-3	2				PRETINNED BRASS
A3G1-10-3	1	.075-.175	#10	.020	BRASS - NONE
A3G2-10-3	1				PRETINNED BRASS
A3G1-9-3	2	NO INS. GRIP	#10	.020	BRASS
A3G2-9-3	2				PRETINNED BRASS

- NOTE:
 1. TO ACCEPT WIRE RANGE AWG #22-18
 FEED DIM. = .440
 2. INSULATION WIRE STRIP LENGTH $7/32 \pm 1/32$
 3. FOR PART WITH PAPER INTERLEAVING ADD SUFFIX "K" TO PART NUMBER (I.E. A3G1-6-3K).

SHEET 2 OF 2

				PRINT DIST.	PROD. REL.	PER CA	CHK'D	TOLERANCES UNLESS OTHERWISE SPECIFIED	 CORPORATION STOUGHTON, MA
				DEPT #	QUOTE REL.		APP.	DECIMALS ±.010	
				ENG	DRAWN BY D.O'NEILL 6/23/04			METRIC ±0.25mm	PART NAME
				SALES	SUPERSEDES DWG. DATED: 6-13-97			ANGLES ±1°	
				STO X	SCALE 4:1 DO NOT SCALE PRINT			 3RD ANGLE PROJECTION DWG SIZE B	CAD#: 4000-A3G-REV-S.DRW
S	REV/REDWN ECR# S000056	6/23/04	DON	RAL	MATERIAL: BRASS - SEE TABLE				P/N: 4000-A3G
REV.	DESCRIPTION	DATE	DR.	JZ	FINISH: SEE TABLE				
				CHINA					