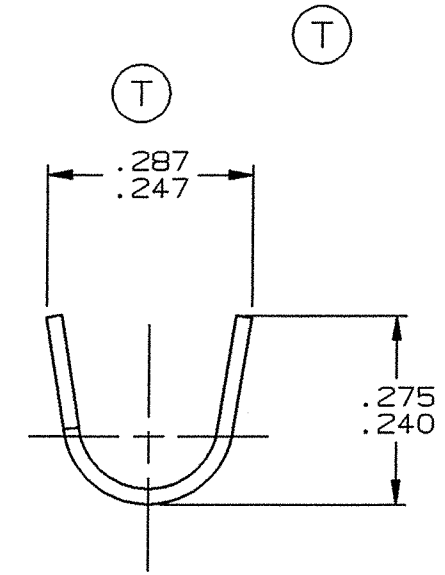
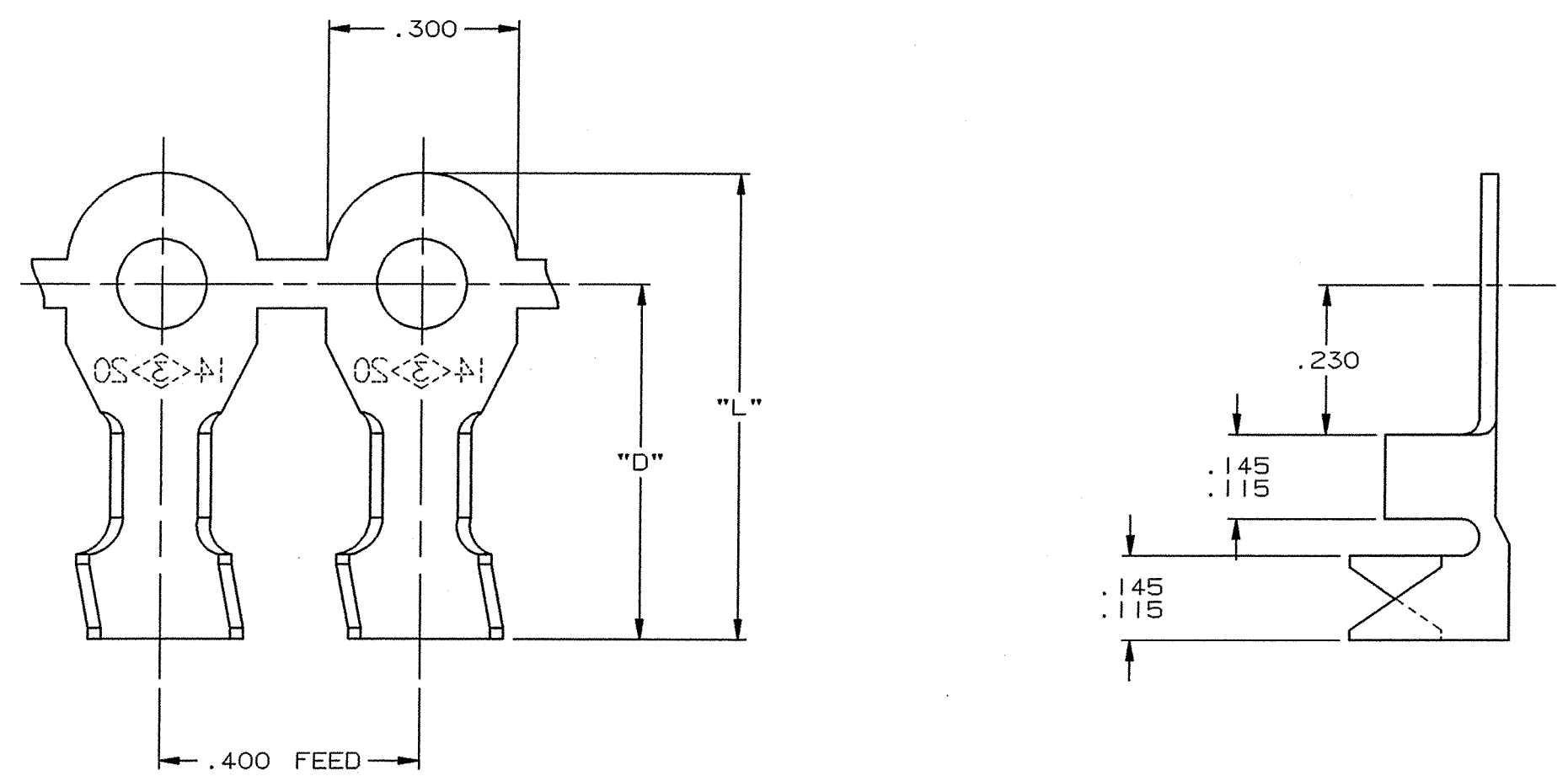


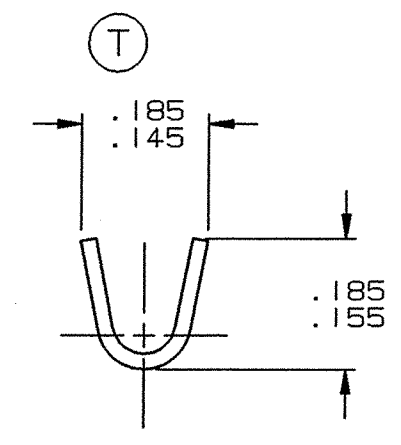
DEPT	1
1	1
2	
3	
4	2
5	
6	
7	
8	
9	
10	
11	
12	
NC	
JZ	

PART NAME: RING TERMINAL

PART NO: 4000-3G/



INSULATION GRIP



WIRE GRIP

PART NUMBER	INSUL. DIA.	STUD SIZE	STK THK ±.001	FINISH	"D"	"L" ±.015
4000-3G3-1A	NO INSULATION GRIP	.107	.032	NONE	.356	.527
4000-3G4-1A	NO INSULATION GRIP	.103		PRETINNED		
4000-3G1-1	NO INSULATION GRIP	#2	.020	NONE	.356	.527
4000-3G2-1	NO INSULATION GRIP			PRETINNED		
4000-3G1-2	.075-.175	#2	.020	NONE	.547	.718
4000-3G2-2				PRETINNED		
4000-3G1-3	NO INSULATION GRIP	#4	.020	NONE	.356	.527
4000-3G2-3				PRETINNED		
4000-3G3-3				NONE		
4000-3G4-3	.075-.175	#4	.020	NONE	.547	.718
4000-3G1-4				PRETINNED		
4000-3G2-4	.075-.175	#4	.020	NONE	.547	.718
4000-3G3-4				PRETINNED		
4000-3G4-4	.075-.175	#6	.020	NONE	.356	.527
4000-3G1-5				PRETINNED		
4000-3G2-5	NO INSULATION GRIP	#6	.032	NONE	.356	.527
4000-3G3-5				PRETINNED		
4000-3G4-5	.075-.175	#6	.020	NONE	.547	.718
4000-3G1-6				PRETINNED		
4000-3G2-6	.075-.175	#6	.032	NONE	.356	.527
4000-3G3-6				PRETINNED		
4000-3G4-6	NO INSULATION GRIP	#8	.020	NONE	.547	.718
4000-3G1-7				PRETINNED		
4000-3G2-7	.075-.175	#8	.032	NONE	.356	.527
4000-3G3-7				PRETINNED		
4000-3G4-7	.075-.175	#8	.020	NONE	.547	.718
4000-3G1-8				PRETINNED		
4000-3G2-8	NO INSULATION GRIP	#10	.032	NONE	.356	.527
4000-3G3-8				PRETINNED		
4000-3G4-8	.075-.175	#10	.020	NONE	.547	.718
4000-3G1-9				PRETINNED		
4000-3G2-9	NO INSULATION GRIP	#10	.032	NONE	.356	.527
4000-3G3-9				PRETINNED		
4000-3G4-9	.075-.175	#10	.020	NONE	.547	.718
4000-3G1-10				PRETINNED		
4000-3G2-10	NO INSULATION GRIP	#10	.032	NONE	.356	.527
4000-3G3-10				PRETINNED		
4000-3G4-10	.075-.175	#10	.020	NONE	.547	.718
4000-3G1-10-5				PRETINNED		
4000-3G1-15	NO INSULATION GRIP	#12	.020	NONE	.356	.527
4000-3G2-15	NO INSULATION GRIP	#12	.020	PRETINNED	.356	.527

- NOTES:  
 1. TO ACCOMMODATE #14-#20 AWG GAUGE WIRE.  
 2. RECOMMENDED STRIP LENGTH: 3/16 ±1/32  
 3. FOR STANDARD REELING SEE FIGURE 1.  
 4. FOR REVERSE REELING ADD SUFFIX "R" TO PART NUMBER (I.E. 4000-3G3-6R) SEE FIGURE 2.  
 5. FOR LOOSE PIECE TERMINALS ADD SUFFIX "-1" TO PART NUMBER (I.E. 4000-3G3-6-1).

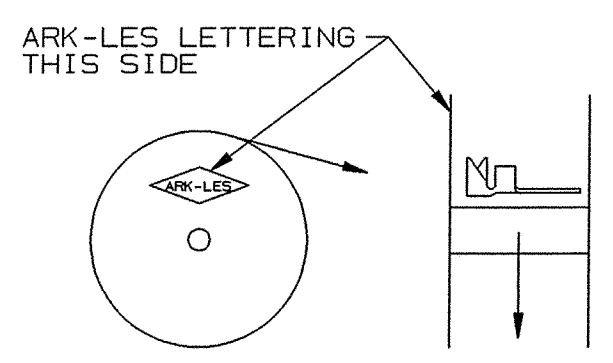


FIGURE 1  
STANDARD REELING  
(I.E. 4000-3G3-6)

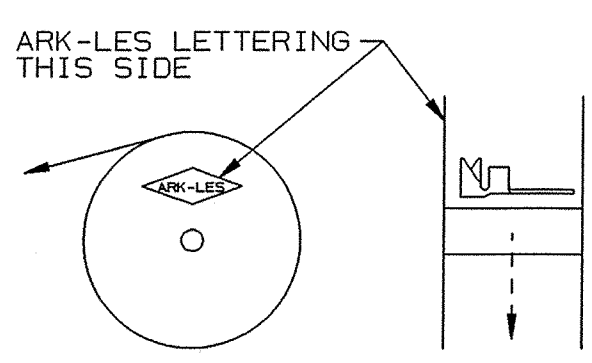


FIGURE 2  
REVERSE REELING  
(I.E. 4000-3G3-6R)

ARK-LES  
UNCONTROLLED

PROD. REL.	PER CA	3/10/61	JR	TOLERANCES UNLESS OTHERWISE SPECIFIED:
QUOTE REL.				DECIMALS ±.010 METRIC ±0.25mm ANGLES ±1°
DR: B J CARUTHERS	9/6/96			MATERIAL: BRASS
CHK'D: R.W.T.	2-28-00			FINISH: SEE TABLE
APP: COR 33-00				PART NO: 4000-3G/
R	REVISD & REDRAWN PER ECR #11047	9/6/96	BJC	SUPERCEDES DWG. DATED: 7/24/90
REV.	DESCRIPTION	DATE	DR.	SCALE: 4=1 CAD NO: CWA0003

ORIGINAL IF RED