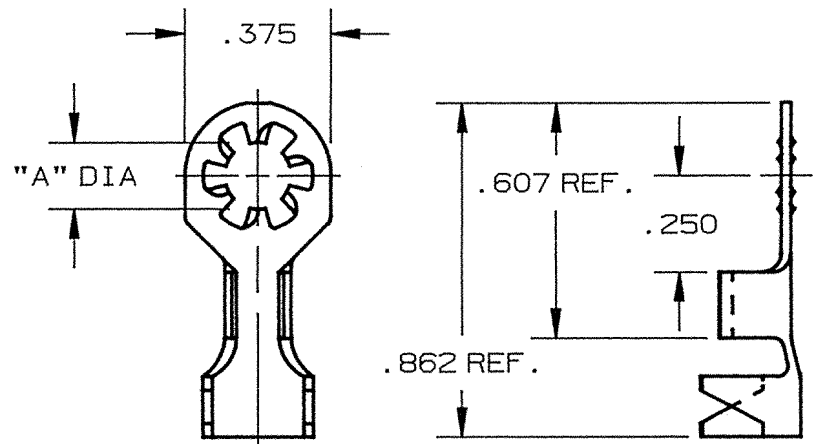


DEPT	
1	1
2	
3	
4	3
5	
6	
7	
8	
9	
10	
11	
12	
NC	
JZ	

PART NAME: TERMINAL, RING SERRATED, #6-#8-#10 STUD

PART NO: 4000-A4G98/

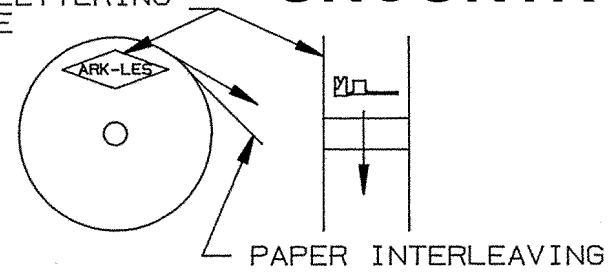


PART NUMBER	DIM. "A"	INSUL. GRIP
4000-A4G98-5	.146	NO
4000-A4G98-6		YES
4000-A4G98-7	.172	NO
4000-A4G98-8		YES
4000-A4G98-9	.198	NO
4000-A4G98-10		YES

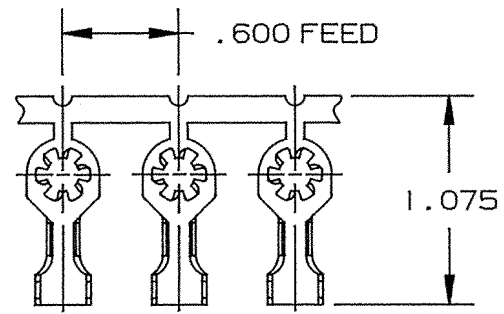
- NOTES:
- FOR PARTS LOOSE PIECE ADD SUFFIX "-1" TO PART NUMBER (I.E. 4000-A4G98-10-1).
  - WIRE RANGE: #12-#18 AWG WIRE  
INSULATION RANGE: .075-.175 DIA.
  - RECOMMENDED STRIP LENGTH: 7/32 ±1/32.
  - PARTS NOT UL RECOGNIZED.

## ARK-LES UNCONTROLLED

ARK-LES LETTERING THIS SIDE



REELING DIAGRAM



FABRICATED TERMINAL STRIP

SCALE: FULL

				PROD. REL.	RK 2850	6/21/76	SJ	TOLERANCES UNLESS OTHERWISE SPECIFIED:		
				QUOTE REL.	RK 2850	6/21/76	SJ	DECIMALS ±.010	METRIC ±0.25mm	ANGLES ±1°
				DR:	R. TASTULA	9/19/95		MATERIAL: .025 ±.001 C.R. STEEL		
				CHK'D:	R.W.T.	9-19-95		FINISH: PRETINNED		
				APP:	COR	9-20-95		PART NO: 4000-A4G98/		
K	REDRAWN REV. K WAS F PER ECR #10652	9/19/95	RT	SUPERCEDES DWG. DATED: 12/14/92						
REV.	DESCRIPTION	DATE	DR.	SCALE: 2:1	CAD NO: AXC0002					

**ORIGINAL\_IF\_RED**