

DEPT	
1	1
2	
3	
4	3
5	
6	
7	
8	
9	
10	
11	
12	
NC	
JZ	

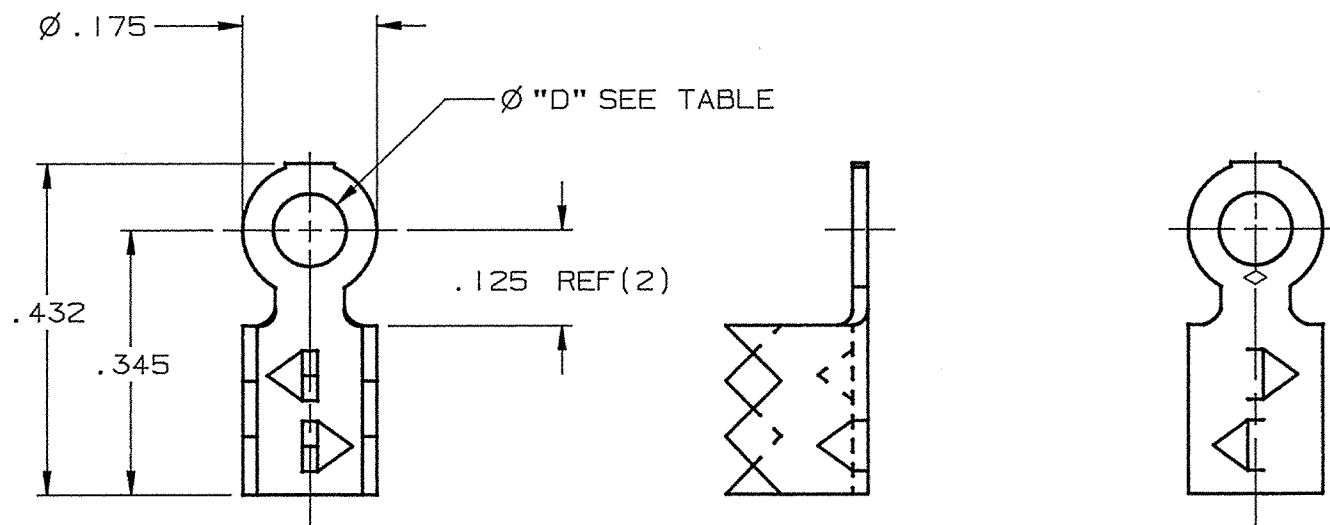
PART NAME:

RING TERMINAL - PIERCING

PART NO:

40041/40062

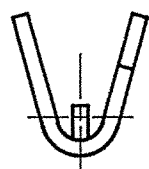
PART NUMBER	STUD SIZE	"D" DIA	MATERIAL	FINISH
40041	0	.073	.020±.001 THICK BRASS	NONE
40042		.063		PRETINNED
40045	2	.099		NONE
40046		.089		PRETINNED
40057	3	.125		NONE
40058		.115		PRETINNED
40061	4	.125		NONE
40062		.115		PRETINNED



NOTES:

1. TO ACCOMMODATE .075-.125 INSULATION DIAMETERS.
2. FOR LOOSE PIECE PARTS ADD SUFFIX "-1" TO PART NUMBER. (i.e. 40041-1).
3. FOR STANDARD REELING SEE FIGURE 1.
4. FOR REVERSE REELING ADD SUFFIX "R" TO PART NUMBER. (i.e. 40041R). SEE FIGURE 2.
5. ALL CORNERS SHOWN SHARP MAY HAVE A .010 MAXIMUM RADIUS.

(N)



ARK-LES LETTERING THIS SIDE

ARK-LES LETTERING THIS SIDE

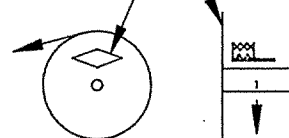
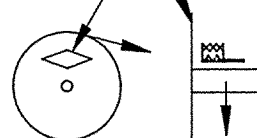


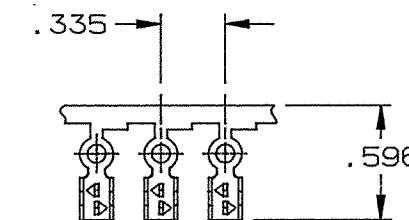
FIGURE 1

FIGURE 2

STANDARD REELING
(I.E. 40041)

REVERSE REELING
(I.E. 40041R)

ARK-LES
UNCONTROLLED



FABRICATED TERMINAL STRIP

SCALE 1=1

				PROD. REL.	85631	3/2/64	HK	TOLERANCES UNLESS OTHERWISE SPECIFIED:		
				QUOTE REL.	85631	3/2/64	HK	DECIMALS ±.010	METRIC ±0.25mm	ANGLES ±1°
				DR:	R. TASTULA	11/8/96		MATERIAL: SEE TABLE		
				CHK'D:	R.W.T.	11-15-96		FINISH: SEE TABLE		
				APP:	CR	1-6-97		PART NO: 40041/40062		
N	REVISED & REDRAWN PER ECR #11109	11/8/96	RT	SUPERCEDES DWG. DATED:	9/30/85					
REV.	DESCRIPTION	DATE	DR.	SCALE: 8:1	CAD NO: BVI0002					

ORIGINAL