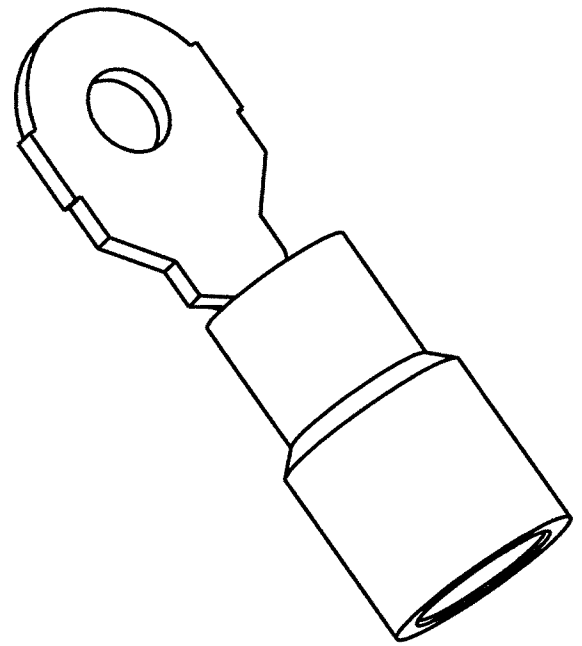
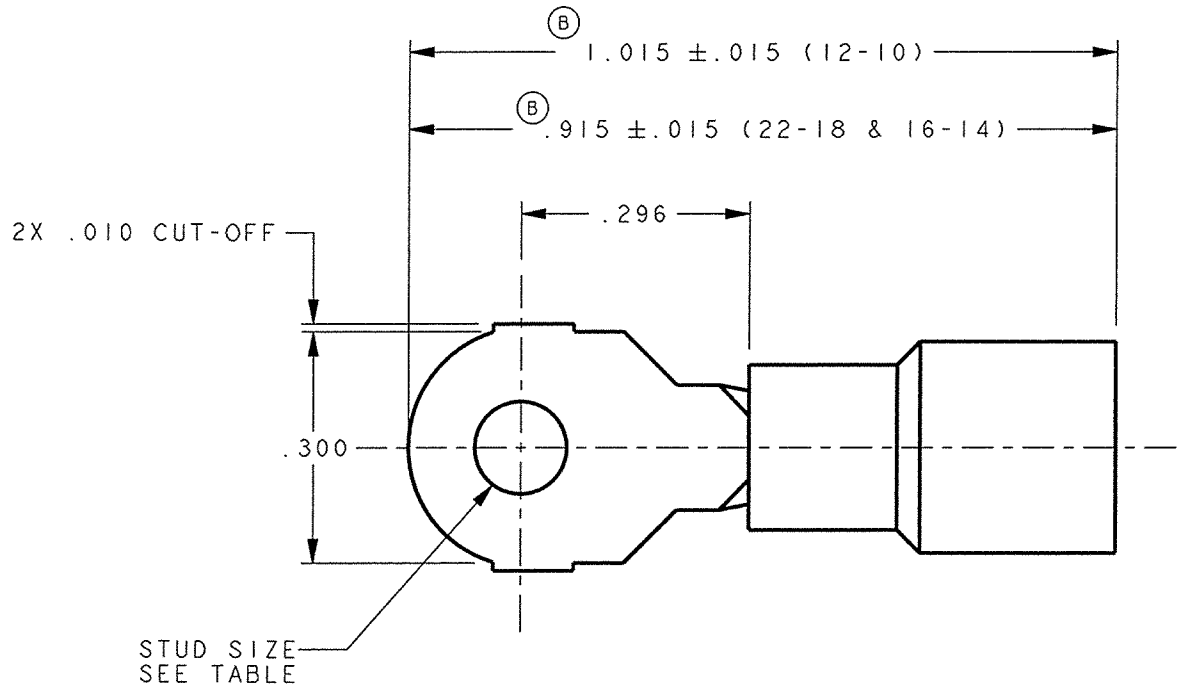


CUSTOMER DRAWING

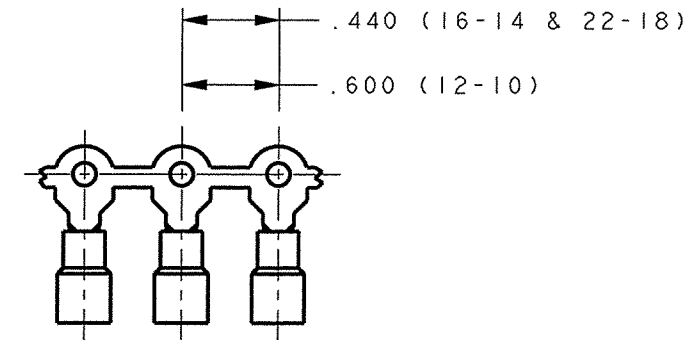
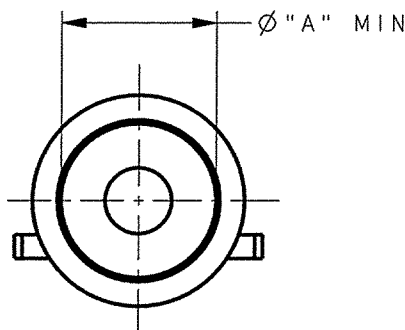
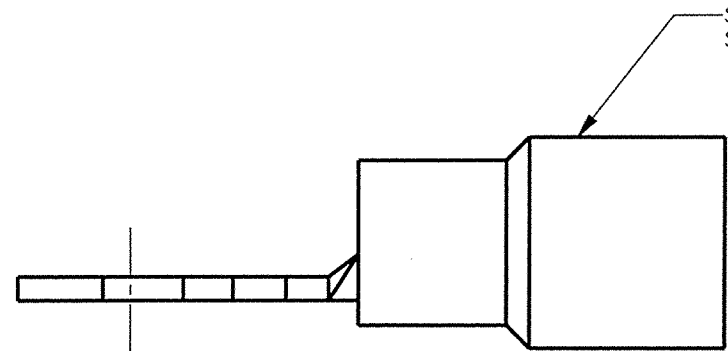
P/N: 7503098-7503688

REV
B

PART NO.	"A" (B) Ø MIN.	SLEEVE COLOR	WIRE SIZE	STUD SIZE
7503098	.143	RED	22-18	#4
7503138	.201	BLUE	16-14	
7503178	.257	YELLOW	12-10	#6
7503218	.143	RED	22-18	
7503258	.201	BLUE	16-14	#8
7503298	.257	YELLOW	12-10	
7503488	.143	RED	22-18	#10
7503528	.201	BLUE	16-14	
7503568	.257	YELLOW	12-10	#10
7503608	.143	RED	22-18	
7503648	.201	BLUE	16-14	
7503688	.257	YELLOW	12-10	



- NOTES:
- MATERIAL:
 TERMINAL: .031 THICK COPPER
 PRE-ELECTRO-TIN PLATE:(22-18 & 16-14AWG)
 .040 THICK COPPER
 PRE-ELECTRO-TIN PLATE:(12-10AWG)
 SLEEVE: 6/6 NYLON
 - RECOMMENDED WIRE STRIP LENGTH:
 9/32 ± 1/32 (22-18 & 16-14)
 5/16 ± 3/64 (12-10)
 - FOR LOOSE PIECE PARTS, ADD SUFFIX "1" TO PART NUMBER (i.e. 75030981)
 - FOR STANDARD REELING SEE FIGURE 1.
 - FOR 30" REEL ADD SUFFIX "9" TO PART NUMBER (i.e. 75030989).



ARK-LES UNCONTROLLED

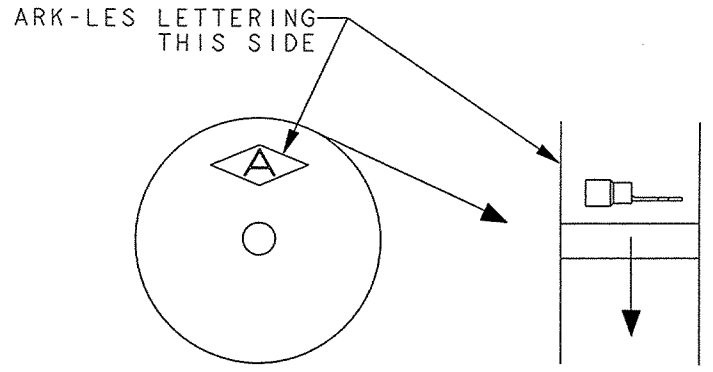


FIGURE 1 REELING DIAGRAM

PRINT DIST.	PROD. REL. ECR12541	8-1-03	CHK'D	TOLERANCES UNLESS OTHERWISE SPECIFIED	 STOUGHTON, MA ORIGINAL IF RED
DEPT #	QUOTE REL.		APP.	DECIMALS ± .010	
ENG	DRAWN BY BJC 5/13/03		APP.	METRIC ± 0.25mm	PART NAME CUSTOMER DRAWING .300 PRE-INSULATED RING TERMINAL
SALES	SUPERSEDES DWG. DATED: 12-12-09			ANGLES ± 1°	
STO	SCALE 4X	DO NOT SCALE PRINT		 3RD ANGLE PROJECTION DWG SIZE B	CAD#: .300RING-CUSTOMER P/N: 7503098-7503688
RAL	MATERIAL: SEE NOTE 1				
JZ	REV. DESCRIPTION	DATE	DR.	FINISH: SEE NOTE 1	REV B
CHINA					