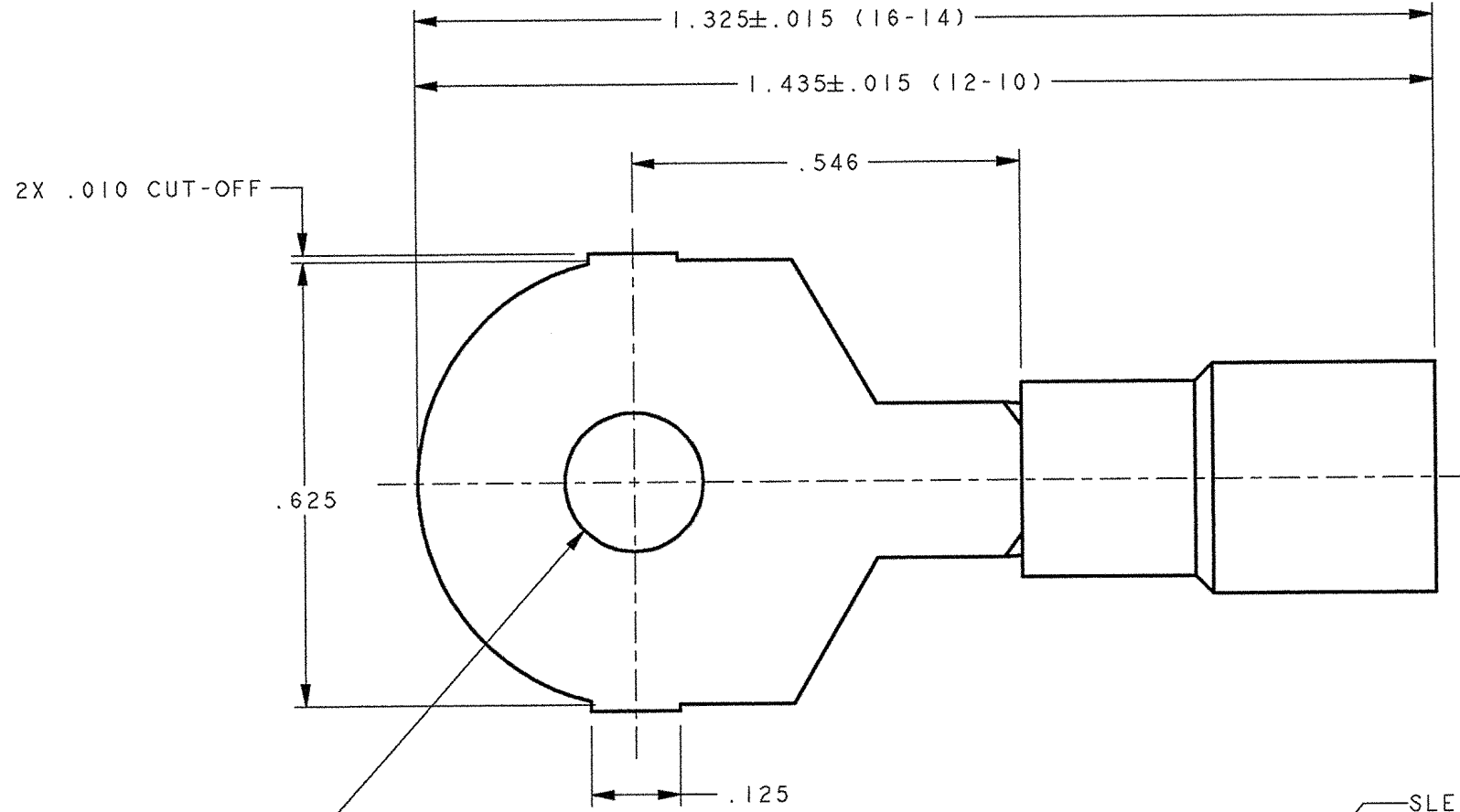


CUSTOMER DRAWING

P/N: 7507648-7507728				REV A
PART NO.	"A" MIN.	SLEEVE COLOR	WIRE SIZE	STUD SIZE
7507648	.197	BLUE	16-14	#3/8
7507728	.257	YELLOW	12-10	

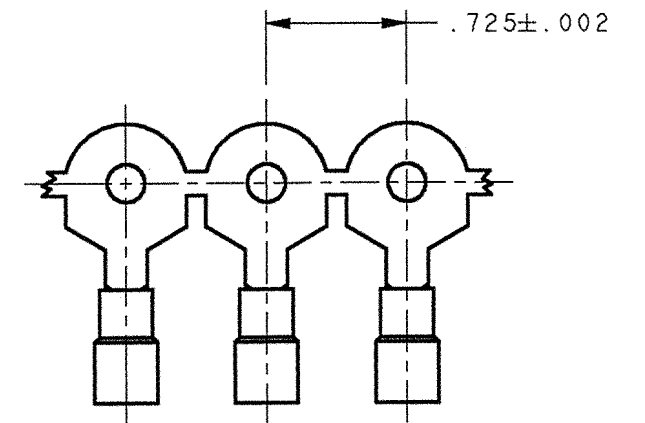
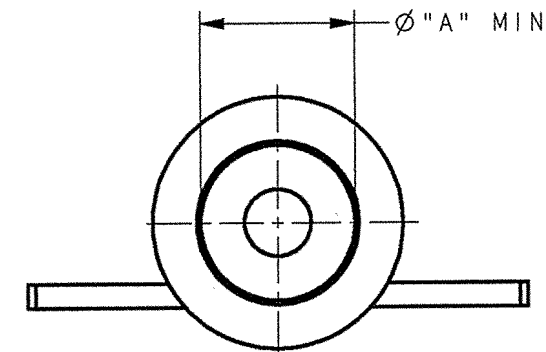


- NOTES:
 1. MATERIAL:
 TERMINAL: .031 THICK COPPER
 PRE-ELECTRO-TIN PLATE: (16-14AWG)
 .040 THICK COPPER
 PRE-ELECTRO-TIN PLATE: (12-10AWG)
 SLEEVE: 6/6 NYLON
 2. RECOMMENDED STRIP LENGTH: 9/32 ± 1/32 (16-14)
 5/16 ± 3/64 (12-10)
 3. FOR LOOSE PIECE PARTS, ADD SUFFIX 1
 TO PART NUMBER (e.g. 75076481)
 4. FOR STANDARD REELING SEE FIGURE 1.

ARK-LES
UNCONTROLLED

STUD SIZE
 SEE TABLE

SLEEVE COLOR
 SEE TABLE



FABRICATED TERMINAL STRIP
 SCALE 1X

ARK-LES LETTERING
 THIS SIDE

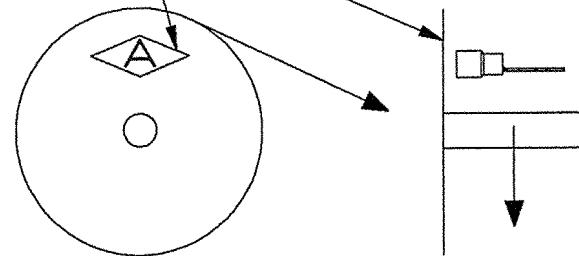


FIGURE 1
REELING DIAGRAM

				PRINT DIST.	PROD. REL. ECR12541	CHK'D RWJ 7-17-03	TOLERANCES UNLESS OTHERWISE SPECIFIED	STOUGHTON, MA ORIGINAL IF RED
				DEPT #	DRAWN BY BJC 7/4/03	APP.	DECIMALS ± .010	
				ENG 1	SUPERSEDES DWG. DATED: 12/23/03		METRIC ± 0.25mm	PART .625 PRE-INSULATED NAME RING TERMINAL
				SALES	SCALE 4X	DO NOT SCALE PRINT	ANGLES ± 1°	CAD#: 625RING-ASSY
				STO 8	MATERIAL: SEE NOTE 1		3RD ANGLE PROJECTION	P/N: 7507648-7507728
REV.	DESCRIPTION	DATE	DR.	A	PROD. REL. PER ECR #12541	7/4/03		BJC
				JZ				
				CHINA				
					FINISH: SEE NOTE 1			