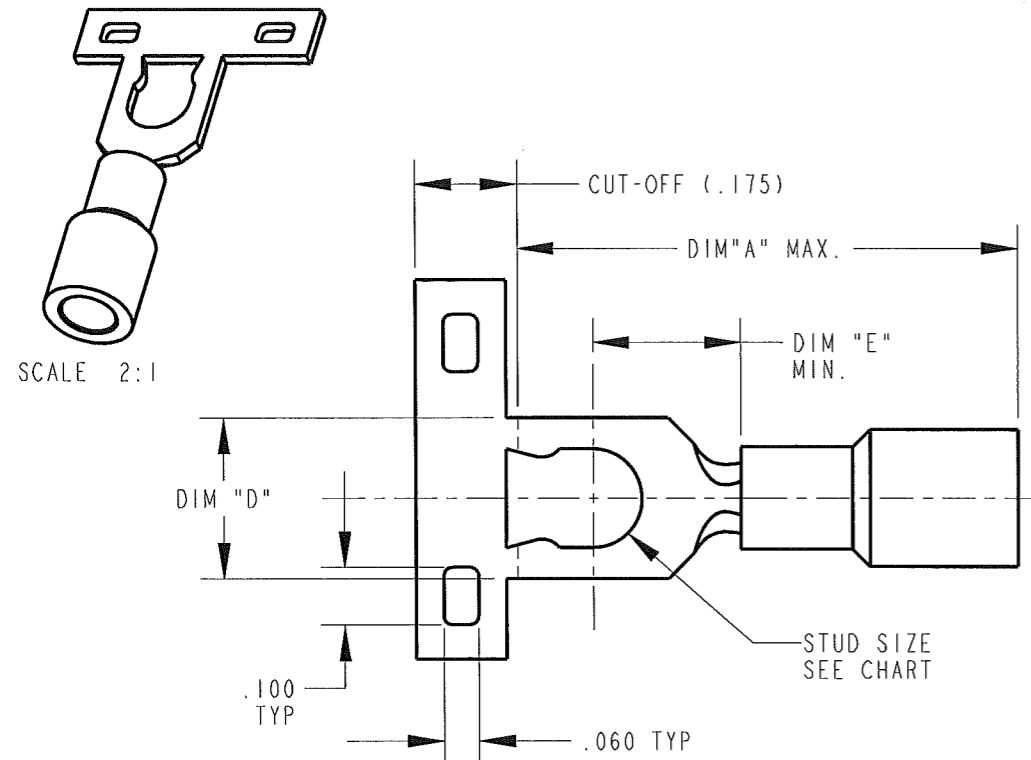


CUSTOMER DRAWING

P/N: 7507808-7507968

REV

B

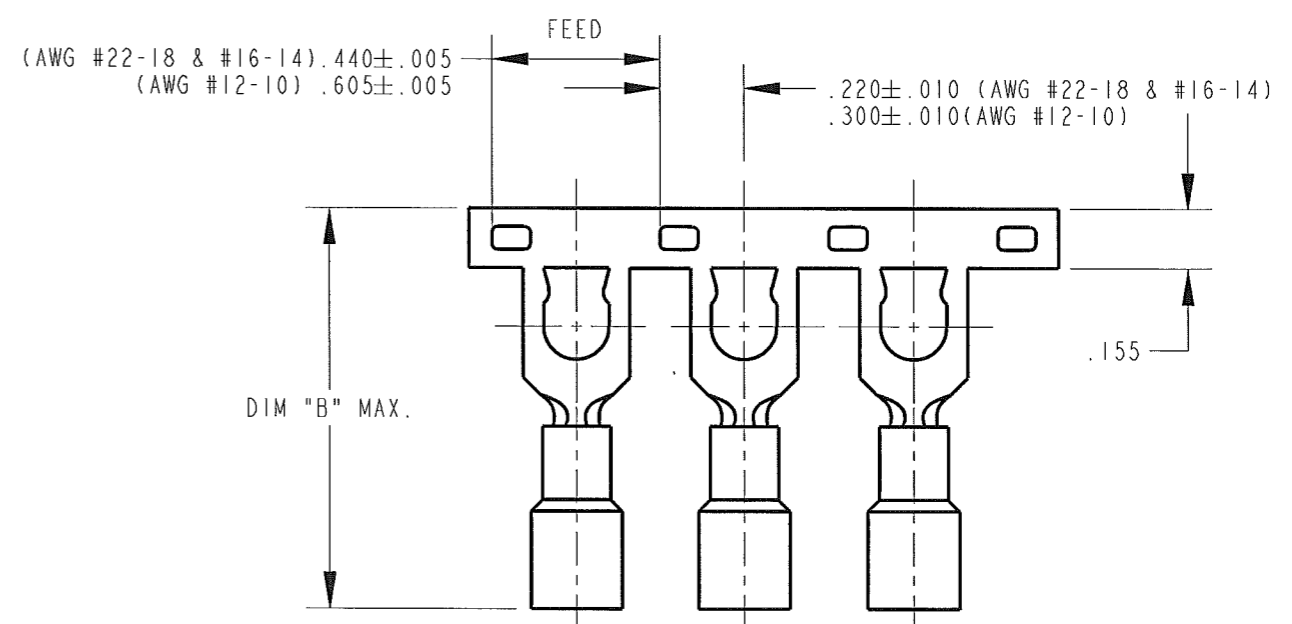
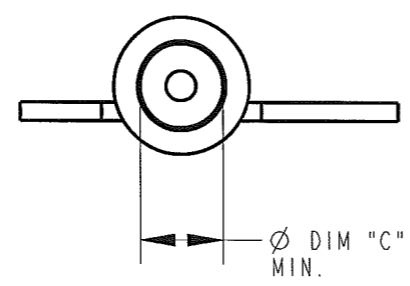
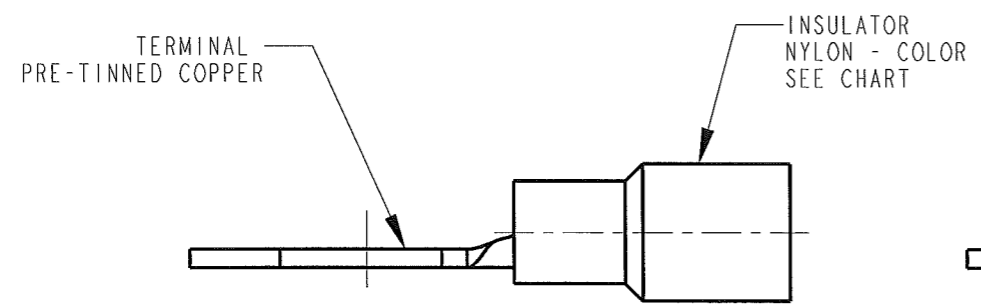


ASSEMBLY PART NO.	DESCRIPTION	INSULATOR COLOR	WIRE SIZE	STUD SIZE	MAT'L THK. ±.001	DIM "A" MAX.	DIM "B" MAX.	DIM "C" MIN.	DIM "D"	DIM "E" MIN.
7507808	.250	RED	AWG #22-#18	#6	.031	.892	1.068	∅ .143	.250	.235
7507828		BLUE	AWG #16-#14		.031	.892	1.068	∅ .201		.235
7507848		YELLOW	AWG #12-#10		.150/.142	.040	.989	1.174		∅ .257
7507868	.280	RED	AWG #22-#18	#8	.031	.892	1.068	∅ .143	.280	.235
7507888		BLUE	AWG #16-#14		.031	.892	1.068	∅ .201		.235
7507908		YELLOW	AWG #12-#10		.176/.168	.040	.989	1.174		∅ .257
7507928	.330	RED	AWG #22-#18	#10	.031	.892	1.068	∅ .143	.330	.220
7507948		BLUE	AWG #16-#14		.031	.892	1.068	∅ .201		.220
7507968		YELLOW	AWG #12-#10		.202/.194	.040	.989	1.174		∅ .257

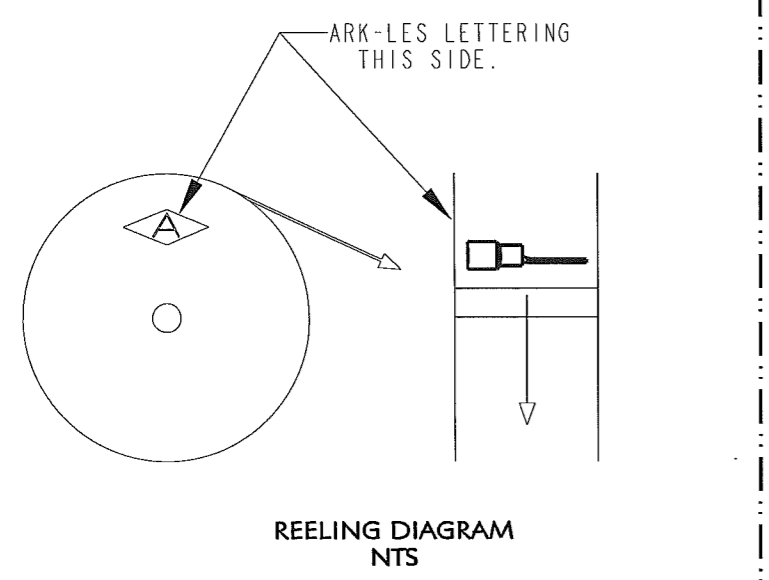
NOTE:

- RECOMMENDED WIRE STRIP LENGTH: 7/32 ± 1/32 (AWG #22-18 & AWG #16-14)
9/32 ± 3/64 (AWG #12-10)
- FOR INDIVIDUAL PIECES ADD SUFFIX "1" TO PART NUMBER.
EXAMPLE: 75078081.

ARK-LES UNCONTROLLED



FABRICATED TERMINAL STRIP
SCALE 2:1



PRINT DIST.	PROD. REL.	ECR#S000016	10/06/03	CHK'D	TOLERANCES UNLESS OTHERWISE SPECIFIED	 CORPORATION STOUGHTON, MA ORIGINAL IF RED
DEPT #	QUOTE REL.			Dolan	DECIMALS ± .015	
ENG	DRAWN BY	D.O'NEILL	10/3/03	APP.	METRIC ± 0.37mm	PART NAME CUSTOMER ASSEMBLY PARTIALLY INSULATED SNAP SPADE SEE CHART
SALES	SUPERSEDES DWG. DATED:			11/19/07	ANGLES ± 1°	
STO	SCALE	3:1	DO NOT SCALE PRINT		3RD ANGLE PROJECTION	CAD#: 7507808-7507968-CUST-REVB P/N: 7507808-7507968
RAL	MATERIAL:				DWG SIZE: B	
JZ	FINISH:					REV B
CHINA						
REV.	DESCRIPTION	DATE	DR.			