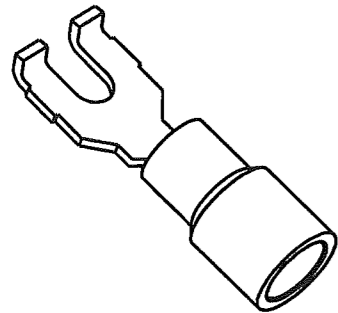


CUSTOMER DRAWING

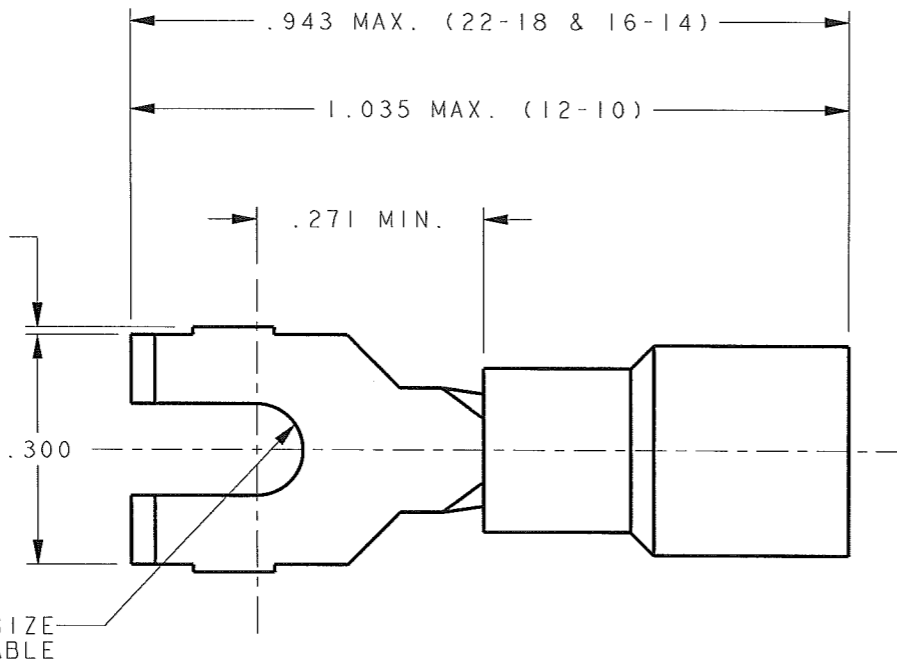
P/N: 7502138-7502578

REV  
D



SCALE 2:1

2X .010 CUT-OFF

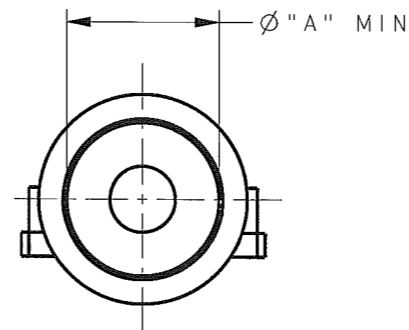
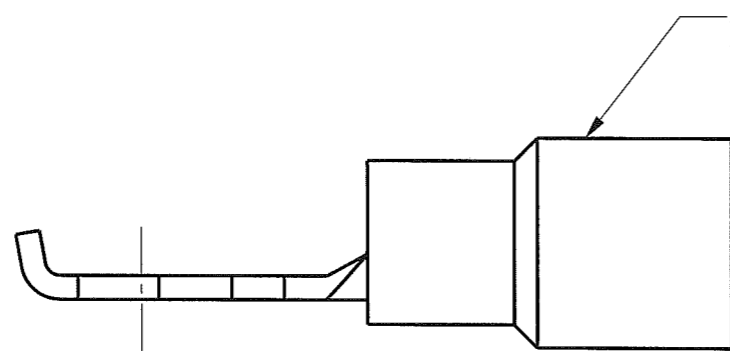


- NOTES:
- MATERIAL:  
TERMINAL: .031 ±.001 THICK COPPER  
PRE-ELECTRO-TIN PLATE: (22-18 & 16-14AWG)  
.040 ±.001 THICK COPPER  
PRE-ELECTRO-TIN PLATE: (12-10AWG)  
SLEEVE: 6/6 NYLON
  - RECOMMENDED WIRE STRIP LENGTH: 9/32 ± 1/32 (22-18 & 16-14)  
5/16 ± 3/64 (12-10)
  - FOR LOOSE PIECE PARTS, ADD SUFFIX "I" TO PART NUMBER (e.g. 7502138I)
  - FOR STANDARD REELING SEE FIGURE 1.
  - FOR 30 INCH REEL, ADD SUFFIX "9" TO PART NUMBER (e.g. 75021389).
  - FOR REVERSE REELING, ADD SUFFIX "R" TO PART NUMBER (e.g. 7502138R). SEE FIGURE 2.

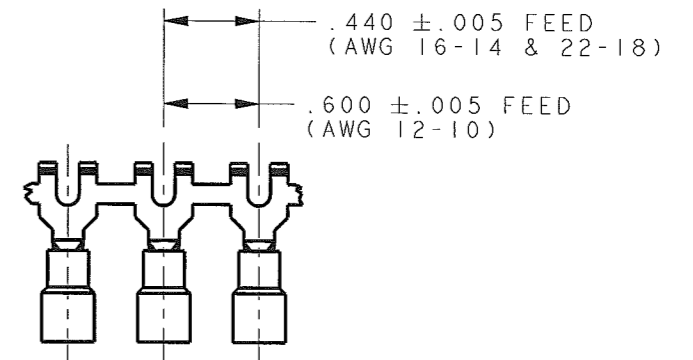
PART NO.	"A" MIN. Ø	SLEEVE COLOR	WIRE SIZE	STUD SIZE
7502138	.143	RED	22-18	#4 .124/.116
7502178	.201	BLUE	16-14	
7502218	.257	YELLOW	12-10	#6 .150/.142
7502258	.143	RED	22-18	
7502298	.201	BLUE	16-14	#8 .176/.168
7502338	.257	YELLOW	12-10	
7502378	.143	RED	22-18	#10 .202/.194
7502418	.201	BLUE	16-14	
7502458	.257	YELLOW	12-10	#10 .202/.194
7502498	.143	RED	22-18	
7502538	.201	BLUE	16-14	
7502578	.257	YELLOW	12-10	

STUD SIZE  
SEE TABLE

SLEEVE COLOR  
SEE TABLE



ARK-LES  
UNCONTROLLED



FABRICATED CARRIER STRIP  
SCALE 1X

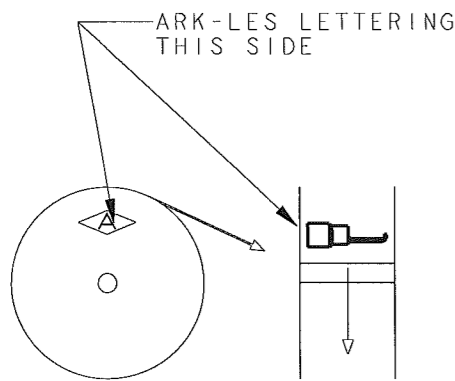


FIGURE 1  
STANDARD REELING  
(e.g. 7502138)

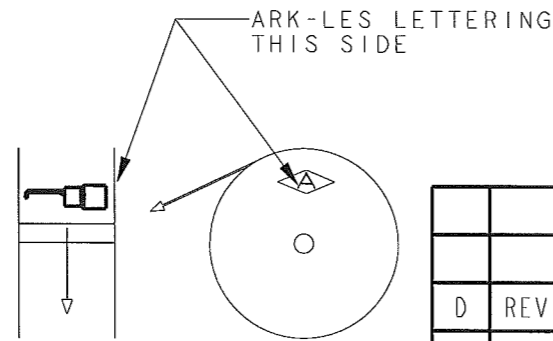


FIGURE 2  
REVERSE REELING  
(e.g. 7502138R)

REV.	DESCRIPTION	DATE	DR.	PRINT DIST.	PROD. REL. ECR12541	8/1/03	CHK'D	TOLERANCES UNLESS OTHERWISE SPECIFIED
D	REV. PER ECR S000273	10/31/07	DON	DEPT #	QUOTE REL.		Don't let	DECIMALS ±.010
C	REVISED PER ECR# S000156	12/13/05	DON	ENG 1	DRAWN BY	BJC 5/25/03	APP.	METRIC ±0.25mm
B	REVISED PER ECR#S000114	1/24/05	DON	SALES	SUPERSEDES DWG. DATED:		10/11/07	ANGLES ±1°
A	PROD. REL. PER ECR #12541	5/25/03	BJC	STO 1	SCALE 4X	DO NOT SCALE PRINT		3RD ANGLE PROJECTION
				RAL	MATERIAL: SEE NOTE 1			DWG SIZE B
				JZ	FINISH: SEE NOTE 1			
				CHINA				

Ark-Les CORPORATION STOUGHTON, MA

ORIGINAL IF RED

PART NAME CUSTOMER ASS'Y DRAWING  
.300 PRE-INSULATED  
FLANGED SPADE TERMINAL

CAD#: .300FLANGED-SPADE-CUST-REVD

P/N: 7502138-7502578

REV  
D