

# "High Frequency Ceramic Solutions"

## 2.45 GHz Band Pass Filter

P/N 2450BP15B100

Detail Specification: 08/17/03

Page 1 of 2

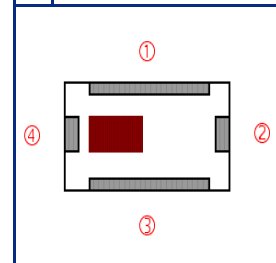
### General Specifications

<b>Part Number</b>	2450BP15B100	
<b>Frequency (MHz)</b>	2400 - 2500	
<b>Insertion Loss</b>	2.2 dB max.	
<b>Return Loss</b>	9.5 dB min.	
<b>Attenuation (min.)</b>	1200 ~ 1300MHz	25 dB
<b>Attenuation (min.)</b>	2000MHz	10 dB
<b>Attenuation (min.)</b>	3000MHz	12 dB
<b>Attenuation (min.)</b>	3600 ~ 3800MHz	30 dB
<b>Attenuation (min.)</b>	4800 ~ 5000MHz	34 dB

<b>Input Power</b>	500 mW max.
<b>Impedance</b>	50 Ω
<b>Operating Temperature</b>	-40 to +85°C
<b>Reel Quantity</b>	4,000

### Terminal Configuration

No.	Function
1	GND
2	OUT
3	GND
4	IN



### Mechanical Dimensions

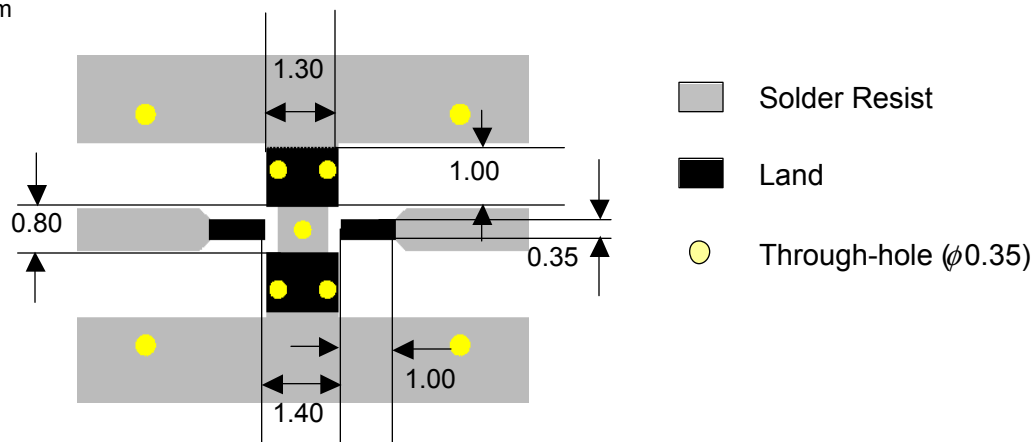
	In	mm
<b>L</b>	0.079 ± 0.006	2.00 ± 0.15
<b>W</b>	0.049 ± 0.004	1.25 ± 0.10
<b>T</b>	0.037 ± 0.004	0.95 ± 0.10
<b>a</b>	0.051 ± 0.006	1.30 ± 0.15
<b>b</b>	0.012 ± 0.006	0.30 ± 0.15
<b>c</b>	0.010 ± 0.006	0.25 ± 0.15
<b>d</b>	0.014 ± 0.006	0.35 ± 0.15

### Mounting Considerations

Mount these devices with brown mark facing up.

Line width should be designed to provide 50Ω impedance matching characteristics.

Units: mm



Johanson Technology, Inc. reserves the right to make design changes without notice.

All sales are subject to Johanson Technology, Inc. terms and conditions.

# "High Frequency Ceramic Solutions"

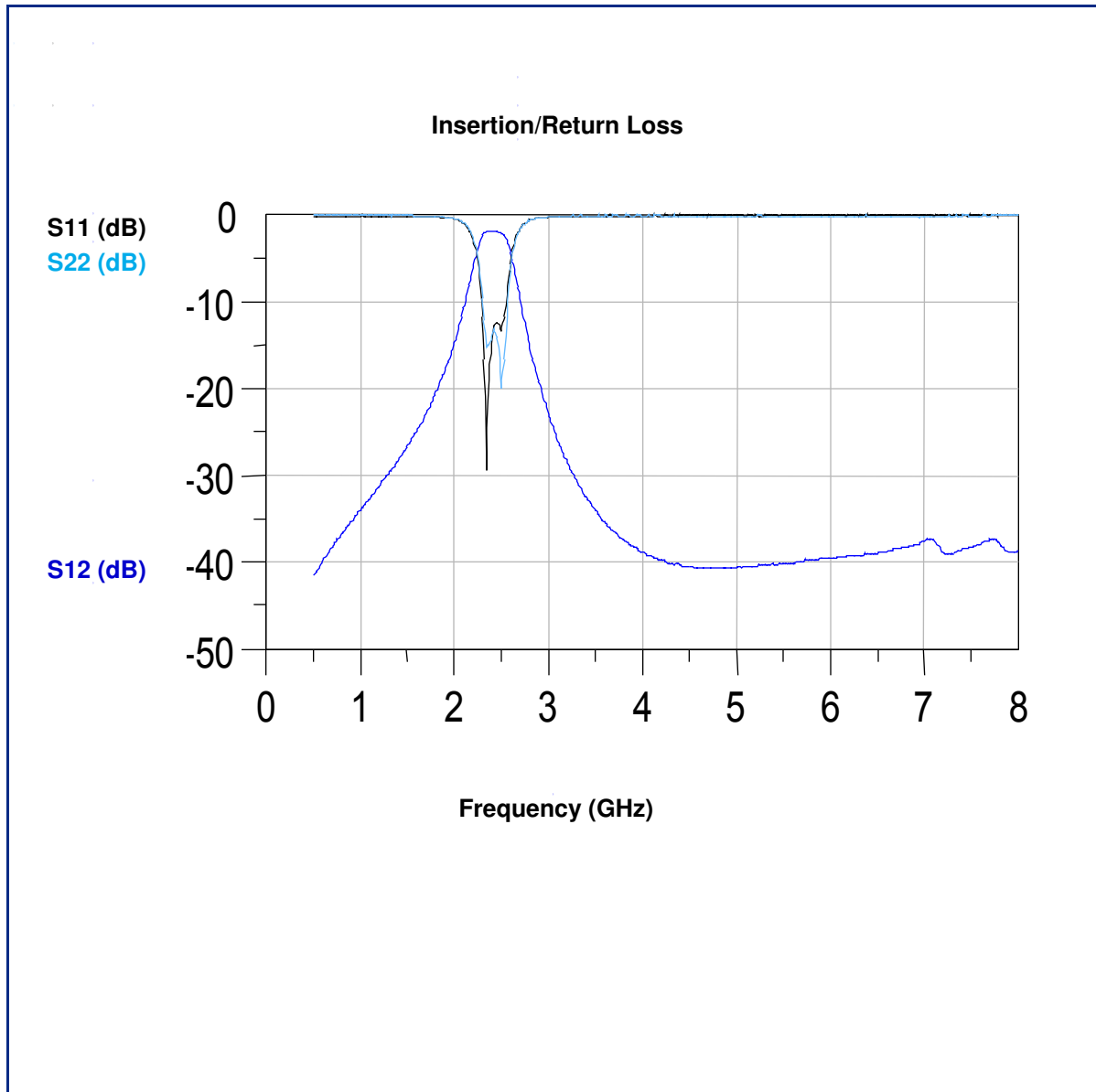
**2.45 GHz Band Pass Filter**

**P/N 2450BP15B100**

Detail Specification: 08/17/03

Page 2 of 2

Typical Electrical Performance (T=25°C)



Johanson Technology, Inc. reserves the right to make design changes without notice.

All sales are subject to Johanson Technology, Inc. terms and conditions.

