

NIS53 SQUARE lenses for Nichia 153 LEDs



- Specially designed for Nichia NS53 series of LEDs
- Special care taken to make a uniform white or warm white illumination.
- Lens material optical grade PC with high UV and temperature resistance (130°C/220°F).
- Best available optical efficiency, up to >90%, with an extremely good cutoff of light
- Integrated holder. Fastening to heat sink with a PU foam adhesive tape of automotive grade
- Compact dimensions 21.6 x 21.6 mm. Square form enables easy build of matrix without any gaps between lenses.

LENS TYPES

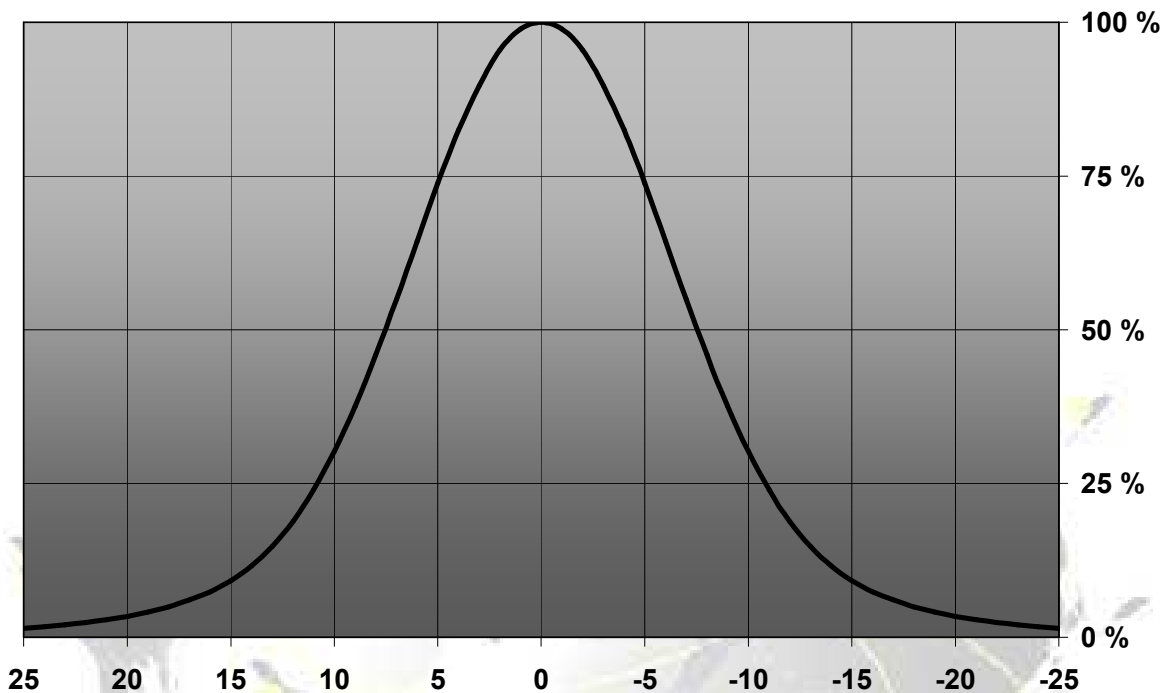
NAME	ORDERING CODE	FWHM Angle
NIS53 SMOOTH SPOT*	FA11233_NIS53-SS	±7.5°
NIS53 DIFFUSER	FA11234_NIS53-D	±8°
NIS53 MEDIUM	FA11235_NIS53-M	±15°
NIS53 OVAL	FA11236_NIS53-O	±8° x ±23°
NIS53 WIDE	FA11237_NIS53-W-V6	±33°

*) IMPORTANT NOTICE:

SMOOTH SPOT lens is a pure collimator lens with light mixing properties. It smoothens the beam pattern and makes a uniform color distribution over the whole beam angle. Light intensity is lower than for the REAL SPOT lens. SMOOTH SPOT lens is recommended for white light applications, where pleasant, high-quality illumination is wished.

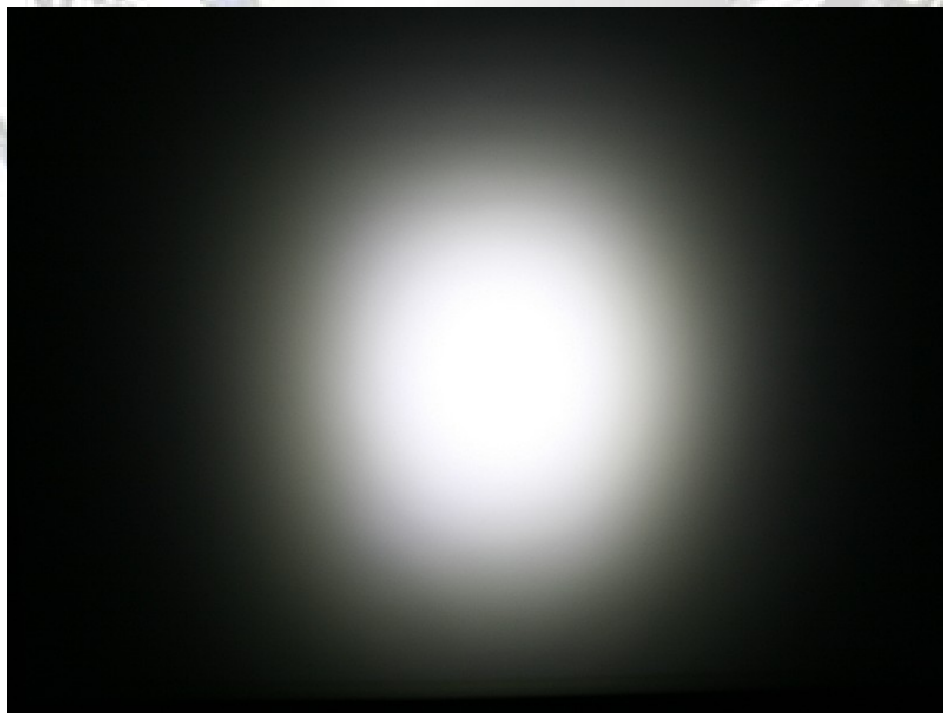
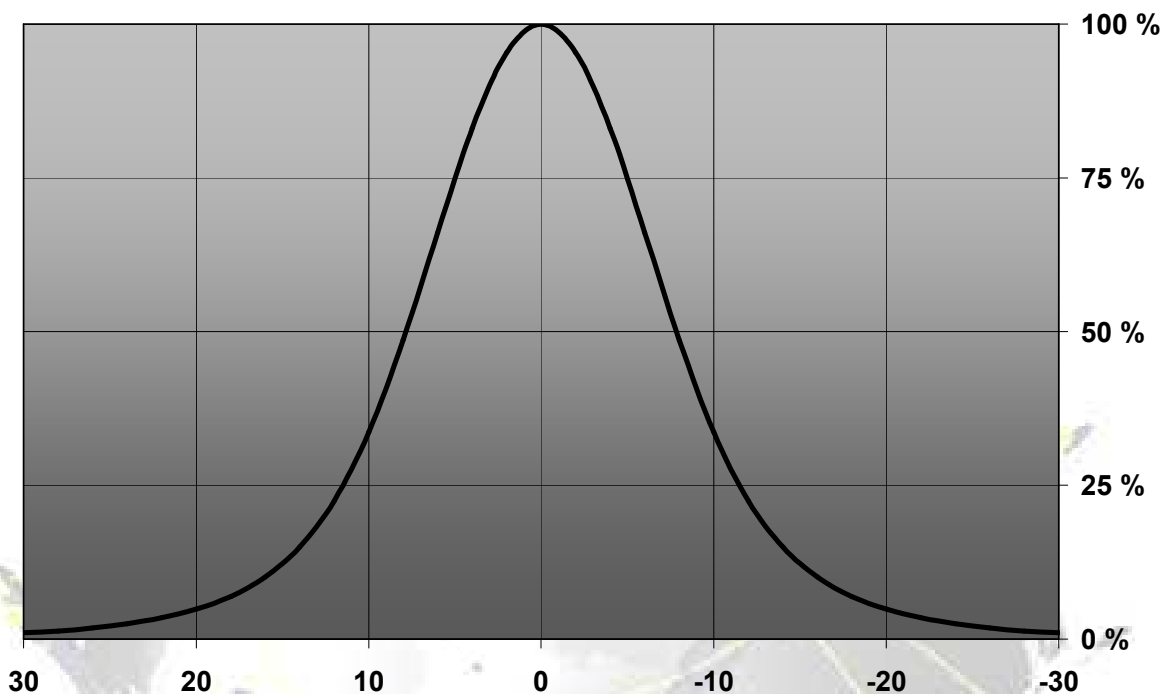
MEASUREMENTS

Relative Intensity of FA11233_NIS53-SS



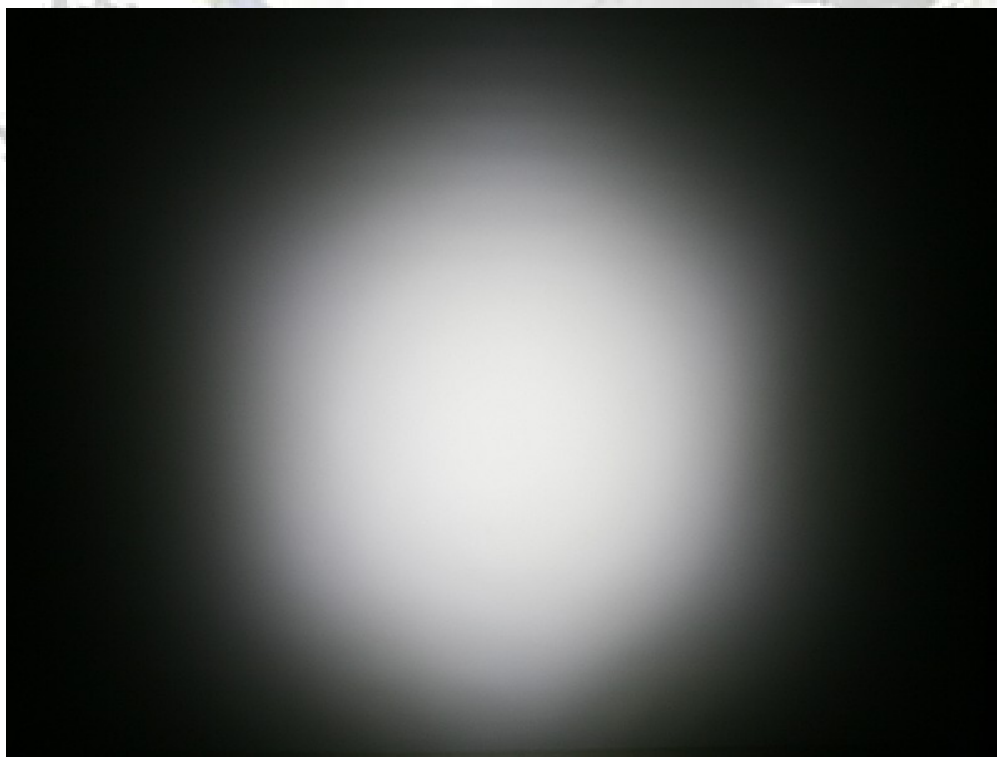
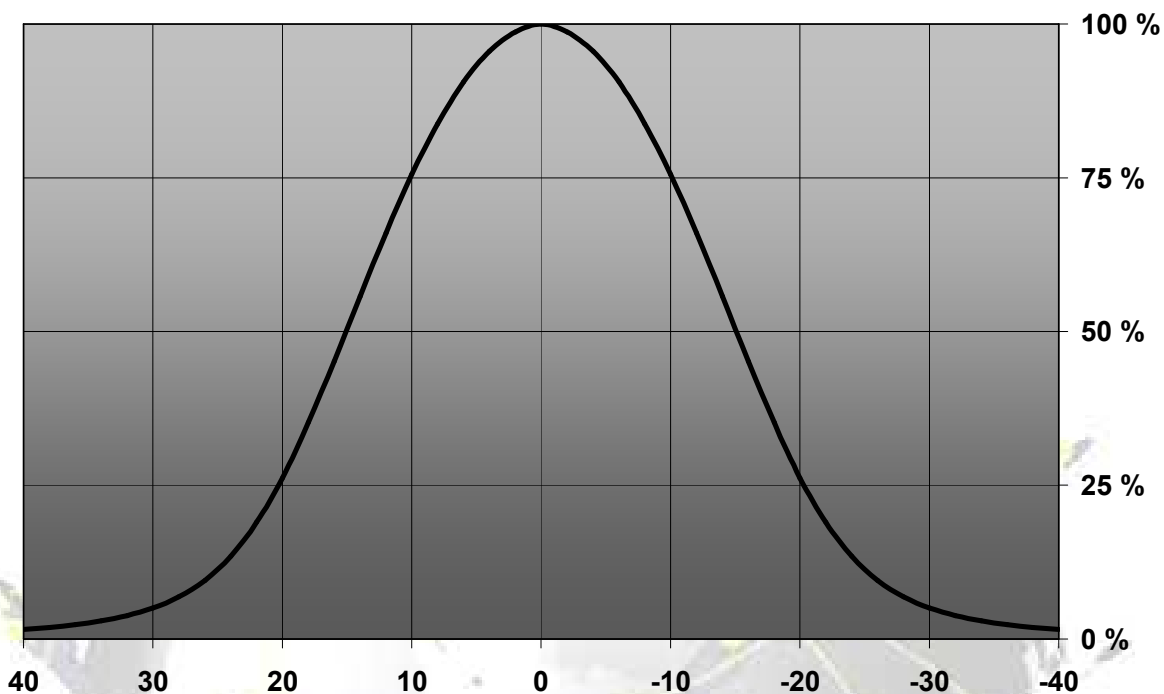
© Ledil Oy – PRELIMINARY - Subject to change without prior notice

Relative Intensity of FA11234_NIS53-D



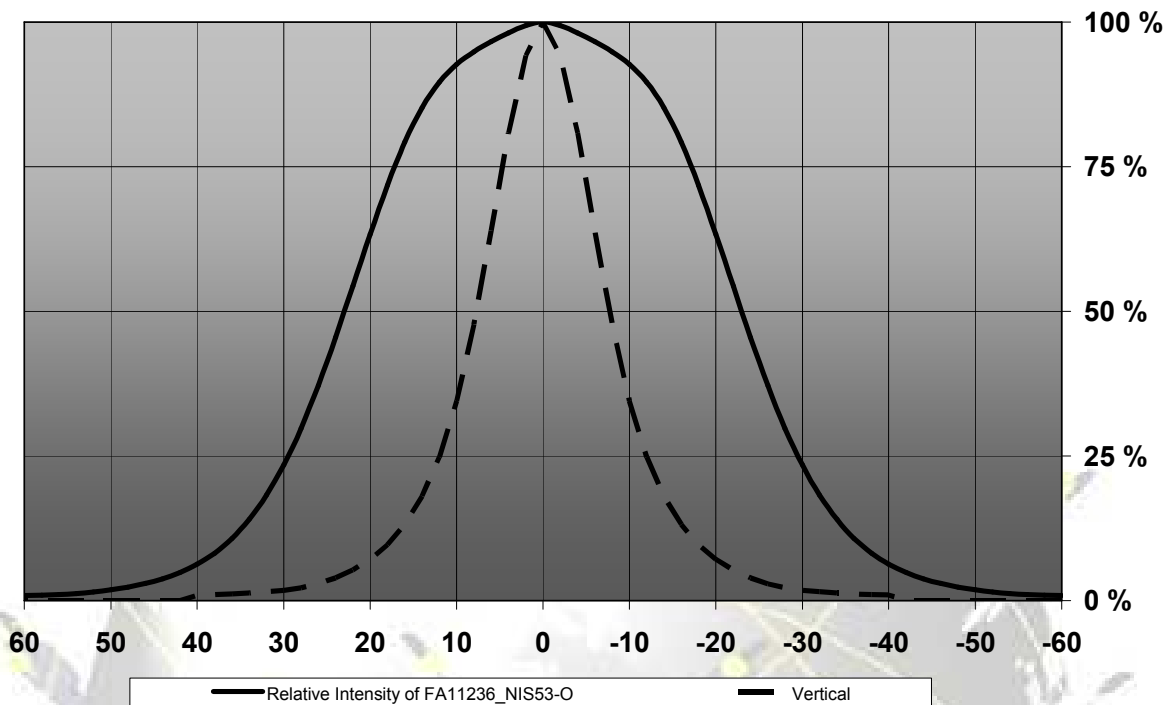
© Ledil Oy – PRELIMINARY - Subject to change without prior notice

Relative Intensity of FA11235_NIS53-M



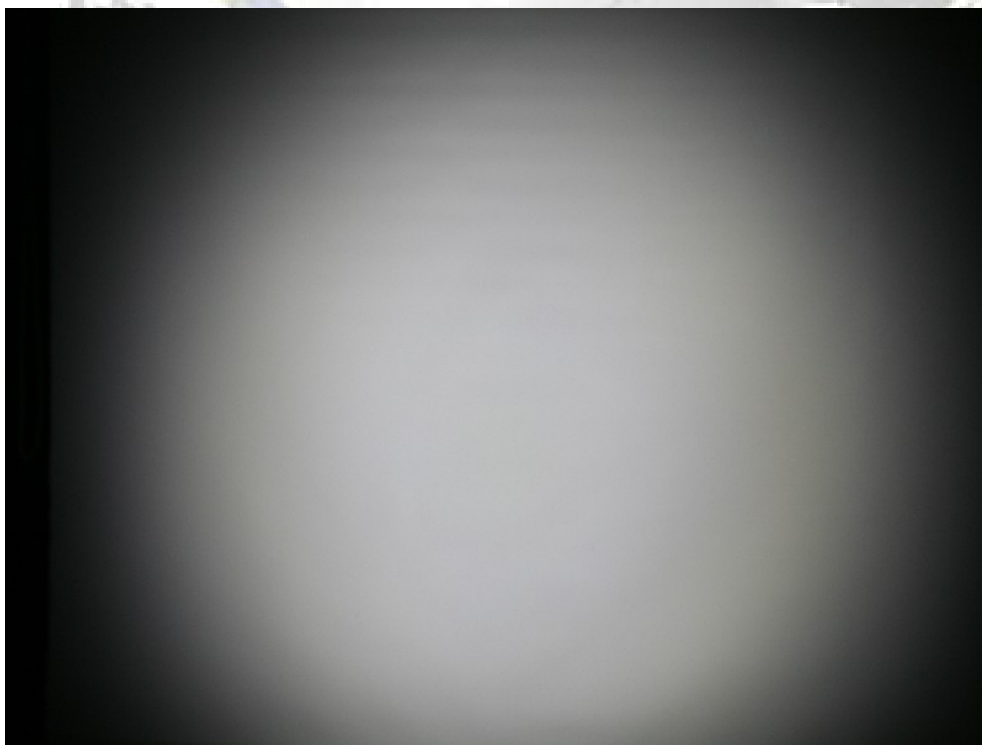
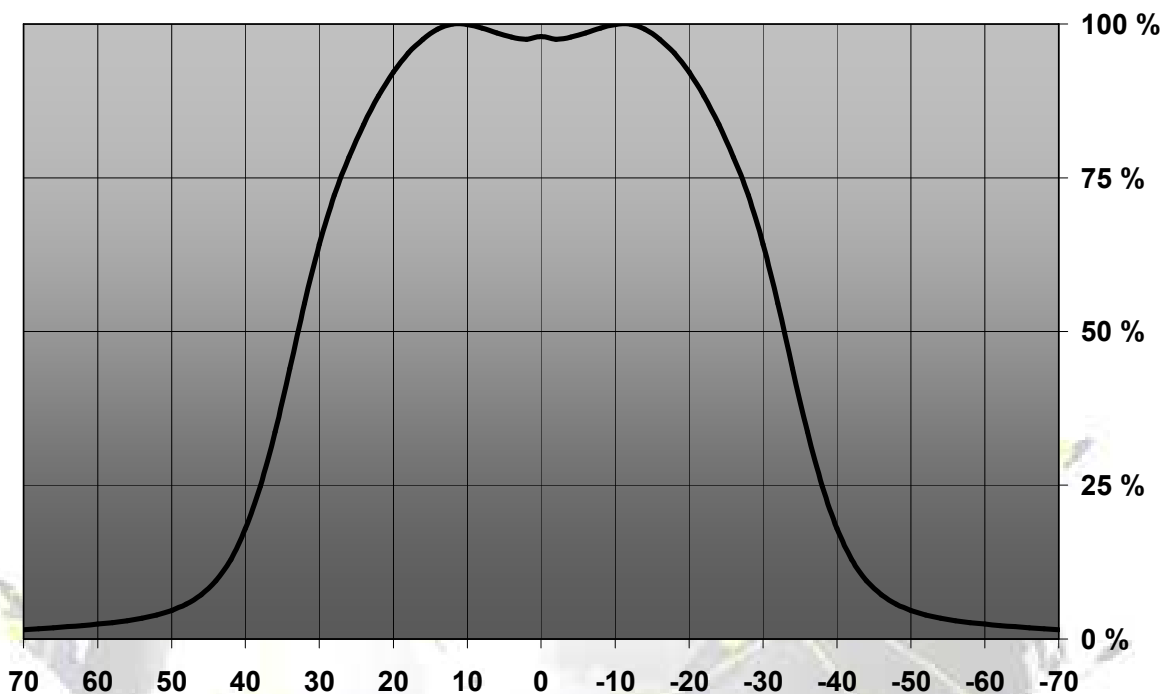
© Ledil Oy – PRELIMINARY - Subject to change without prior notice

Relative Intensity of FA11236_NIS53-O

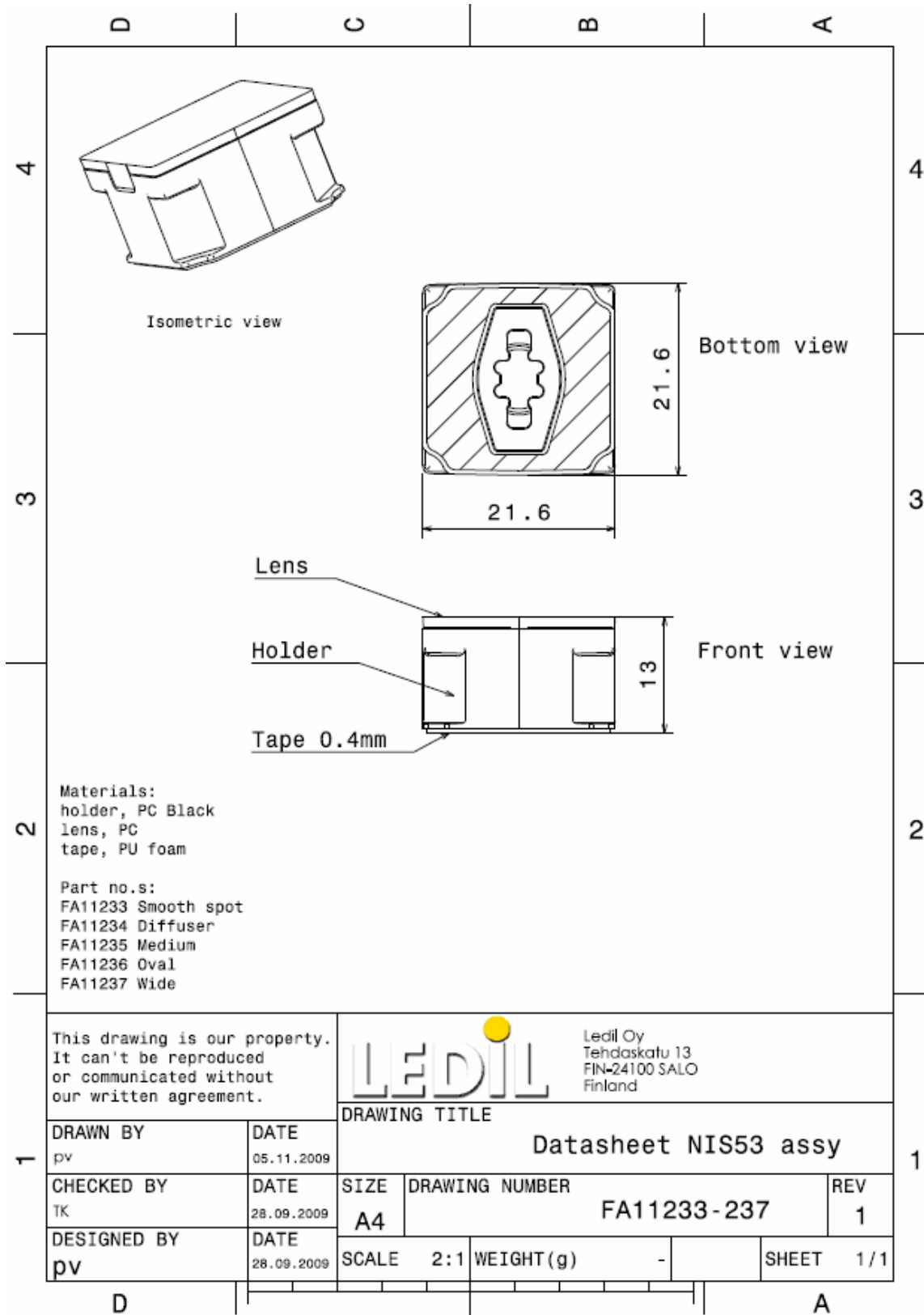


© Ledil Oy – PRELIMINARY - Subject to change without prior notice

Relative Intensity of FA11237_NIS53-W-V6



© Ledil Oy – PRELIMINARY - Subject to change without prior notice



© Ledil Oy – PRELIMINARY - Subject to change without prior notice