

SSS SQUARE lenses for SEOUL SC P4 LEDs



- Designed & optimized for SSC P4 series of LEDs
- Lens material optical grade PC with high UV and temperature resistance (120°C/248°F). Allows use of high current and temperature conditions
- Best available optical efficiency, up to 90%
- Very even color distribution over the whole beam angle
- Integrated holder. Fastening to heat sink with a PU foam adhesive tape of automotive grade. We advise customer to ensure the suitability and sufficiency of the bond in the end product. For example, mechanical stress, vibration and holes on the surface of the circuit board weaken the strength of the tape.
- Please check fastening details from this link:
(http://www.ledil.com/datasheets/DataSheet_TAPE.pdf)
- Compact dimensions 21.6 x 21.6 mm. Square form enables easy build of matrix without any gaps between lenses.
- Easy build of a complete luminaire using SSS lens, SSC P4 LED and heat sink

LENS TYPES

NAME	ORDERING CODE	FWHM Angle
SS SQUARE REAL SPOT*	FA10311_SSS-RS	±5°
SS SQUARE SMOOTH SPOT*	FA10330_SSS-SS	±8°
SS SQUARE DIFFUSER	FA10312_SSS-D	±11°
SS SQUARE MEDIUM	FA10313_SSS-M	±15°
SS SQUARE OVAL	FA10314_SSS-O	±9° x ±22°
SS SQUARE OVAL TURNED 90°	4FA11149_SSS-O-90	±9° x ±22°
SS SQUARE WIDE	FA10539_SSS-W	±20°

*) IMPORTANT NOTICE:

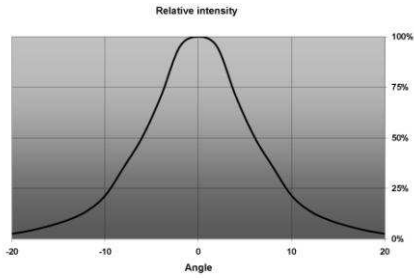
REAL SPOT lens is a highly efficient pure collimator lens, which optically functions in an excellent way, giving a high intensity. REAL SPOT lens also reveals the chip level optical structure of the LED. We recommend REAL SPOT lens for applications, where light intensity is of highest priority, while we do not recommend it for white light applications, where color uniformity is of high importance.

SMOOTH SPOT lens is a pure collimator lens with light mixing properties. It smoothens the beam pattern and makes a uniform color distribution over the whole beam angle. Light intensity is lower than for the REAL SPOT lens. SMOOTH SPOT lens is recommended for white light applications, where pleasant, high-quality illumination is wished.

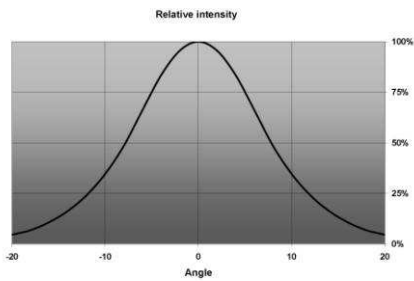
© Ledil Oy – PRELIMINARY - Subject to change without prior notice

MEASUREMENTS

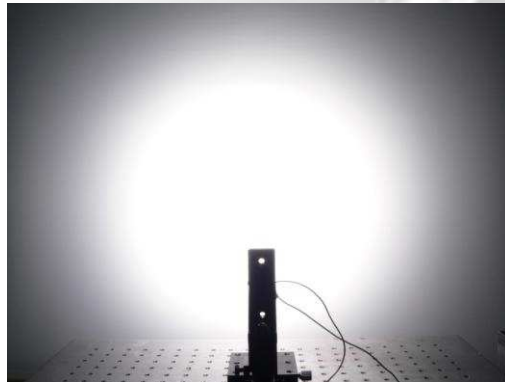
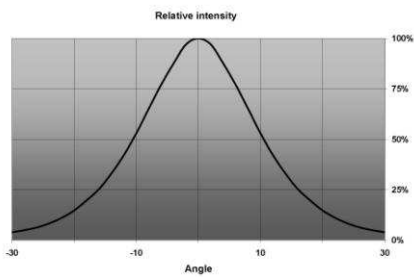
SSS-RS



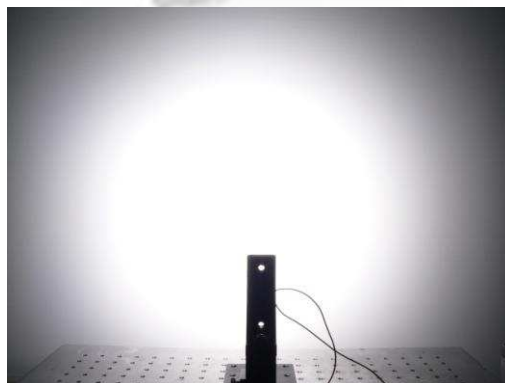
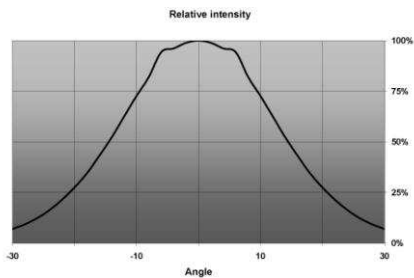
SSS-SS



SSS-D

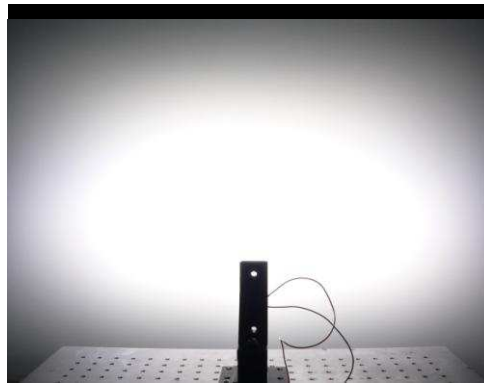
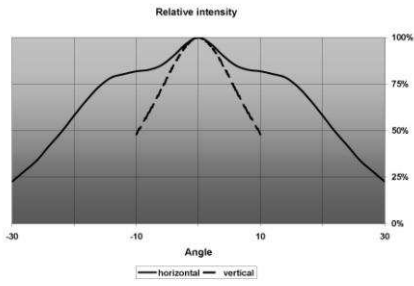


SSS-M



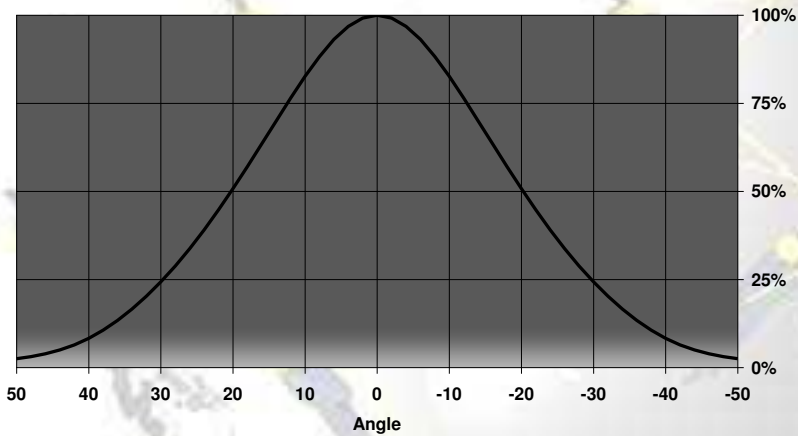
© Ledil Oy – PRELIMINARY - Subject to change without prior notice

SSS-O



SSS-W

Relative Intensity of SSS-W



PHOTOS



SSS-RS



SSS-SS



SSS-D



SSS-M



SSS-W



SSS-O

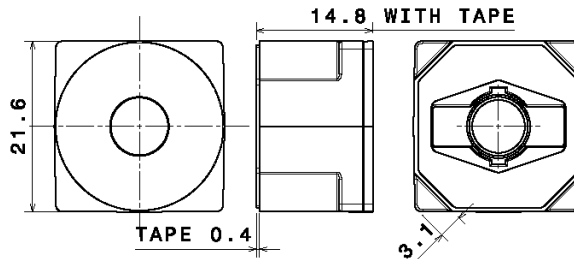
© Ledil Oy – PRELIMINARY - Subject to change without prior notice

DIMENSIONS

Easy & accurate positioning



Adhesive tape for quick and secure fastening.



Space for D=5.0 mm screw head between the lenses for fastening of PCB

PACKAGING



© LEDIL Oy 2006 - All rights reserved

SSS lenses are delivered on adhesive tape liner sheets, each sheet containing 60 lenses.

SPECIAL VERSIONS

Special versions available on request, e.g. different lens holder colors or packaging sizes.