

## STRADA-DN-MX6 LENSES FOR CREE MX-6 LEDs



- Specially designed for Cree MX-6 series of LEDs.
- New extremely wide street light design with very wide horizontal and vertical angle.
- Predecessor of the Strada-B, wider distribution than ever before.
- Special care taken to make a uniform white or warm white illumination. Lenses work well with other colors, too.
- Lens material optical grade PMMA with high UV and temperature resistance (105°C/220°F). Allows use of high current and temperature conditions.
- Best available optical efficiency, approximately 95%.
- Fastening to heat sink with or without PU foam adhesive tape of automotive grade, please select which suits the best for your needs
- We advise customer to ensure the suitability and sufficiency of the bond in the end product. For example, mechanical stress, vibration and holes on the surface of the circuit board weaken the strength of the tape.
- Please check fastening details from this link:  
([http://www.ledil.com/datasheets/DataSheet\\_TAPE.pdf](http://www.ledil.com/datasheets/DataSheet_TAPE.pdf))

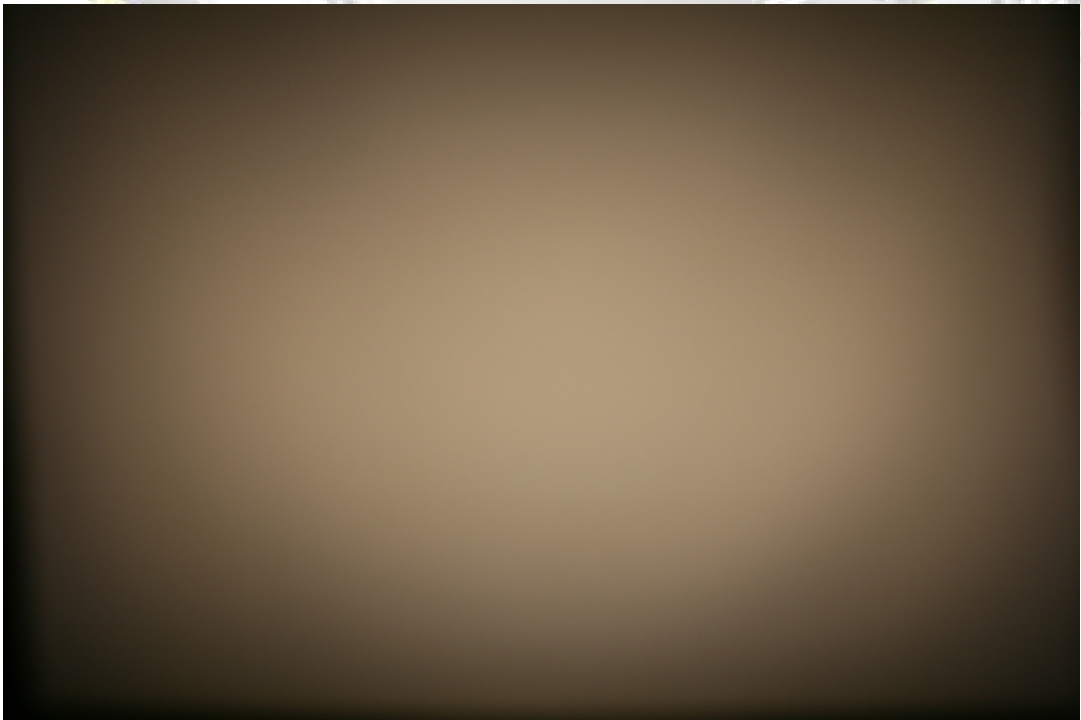
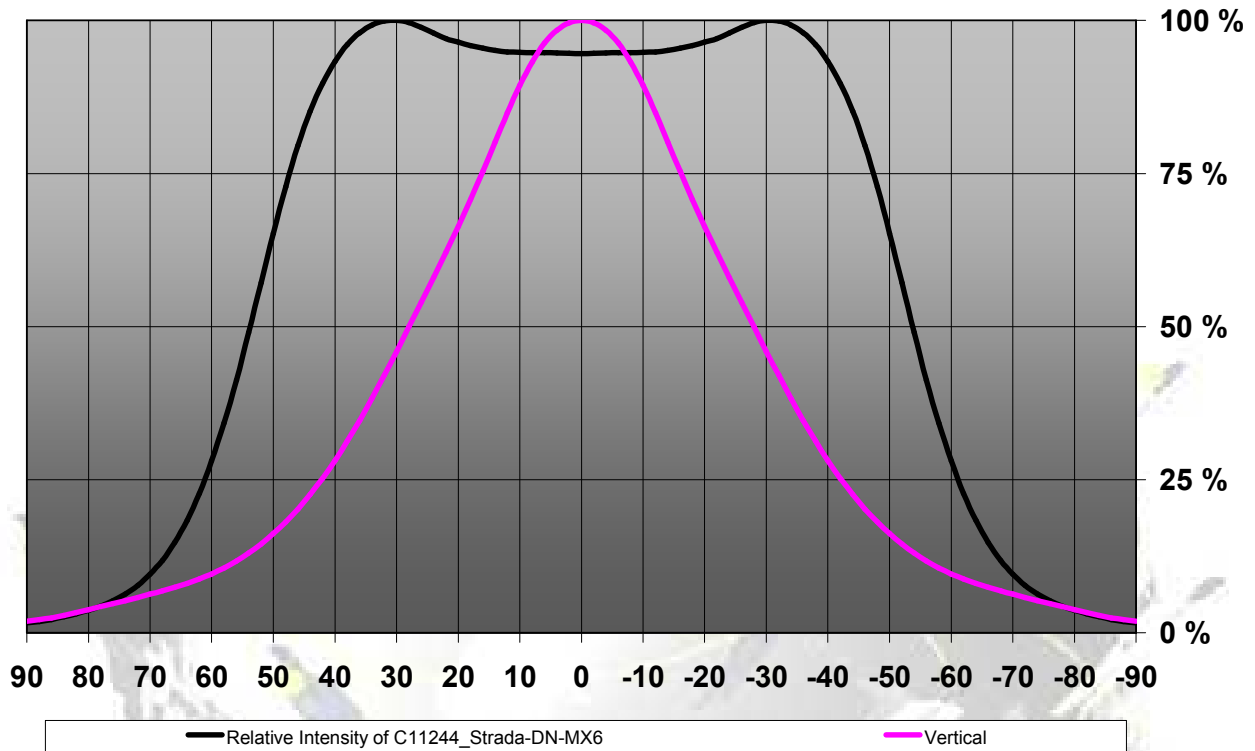
## LENS TYPES

NAME	ORDERING CODE	FWHM Angle
Strada-DN-MX6	C11244_Strada-DN-MX6	±54° x ±28°
Strada-DN-MX6-TAPE	CA11245_Strada-DN-MX6-tape	±54° x ±28°

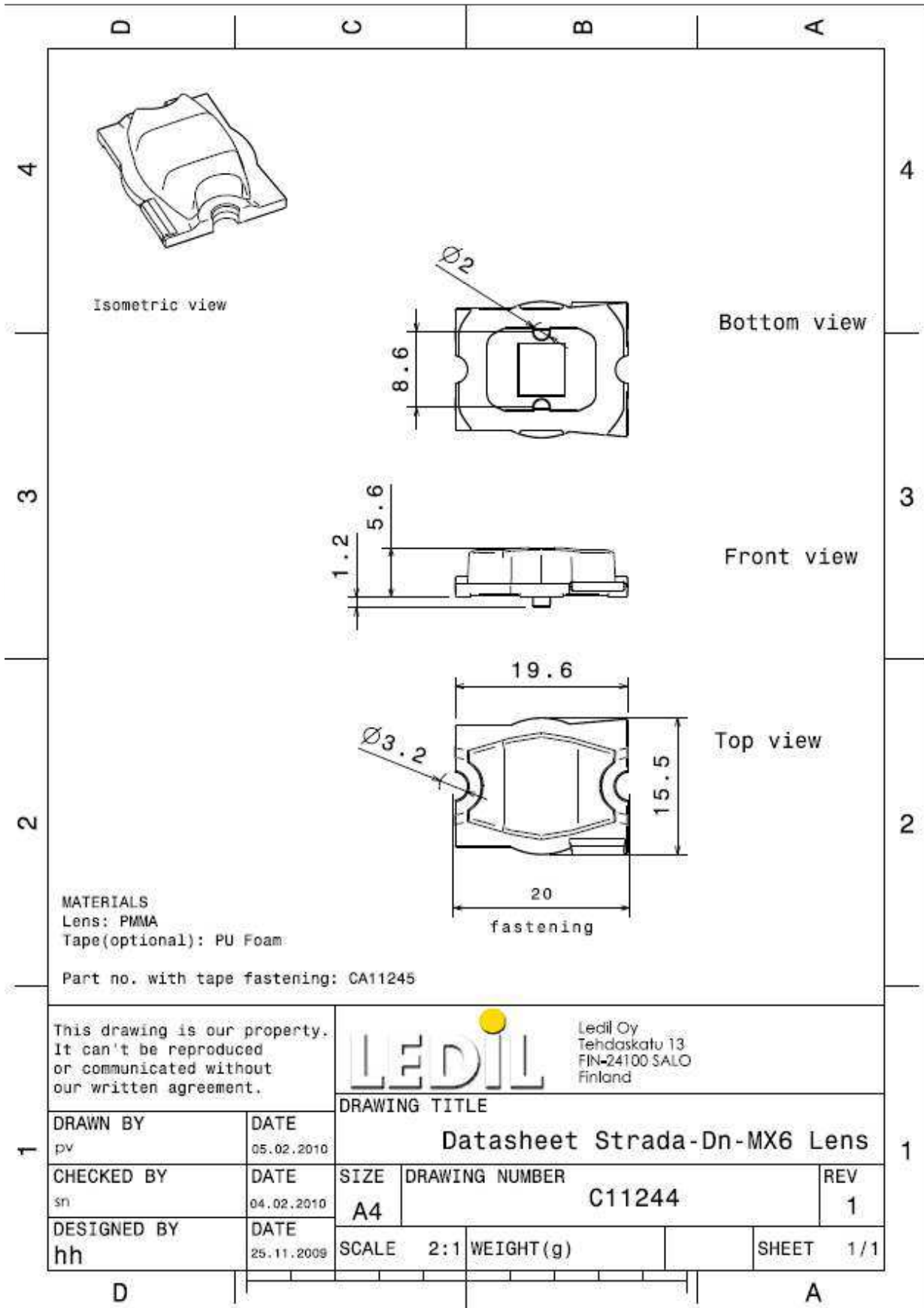
© Ledil Oy – PRELIMINARY - Subject to change without prior notice

## MEASUREMENT DATA & DRAWING

Relative Intensity of C11244\_Strada-DN-MX6



© Ledil Oy – PRELIMINARY - Subject to change without prior notice



© Ledil Oy - PRELIMINARY - Subject to change without prior notice