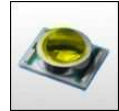


Cute-3 MR11, lenses for CREE XR-E LEDs



- Specially designed for Cree XLAMP XR-E series of LEDs.
- Special care taken to make a uniform white or warm white illumination. Lenses work well with other colors, too.
- Lens material optical grade PMMA. Allows use of high current and temperature conditions
- Best available optical efficiency, up to 90%.

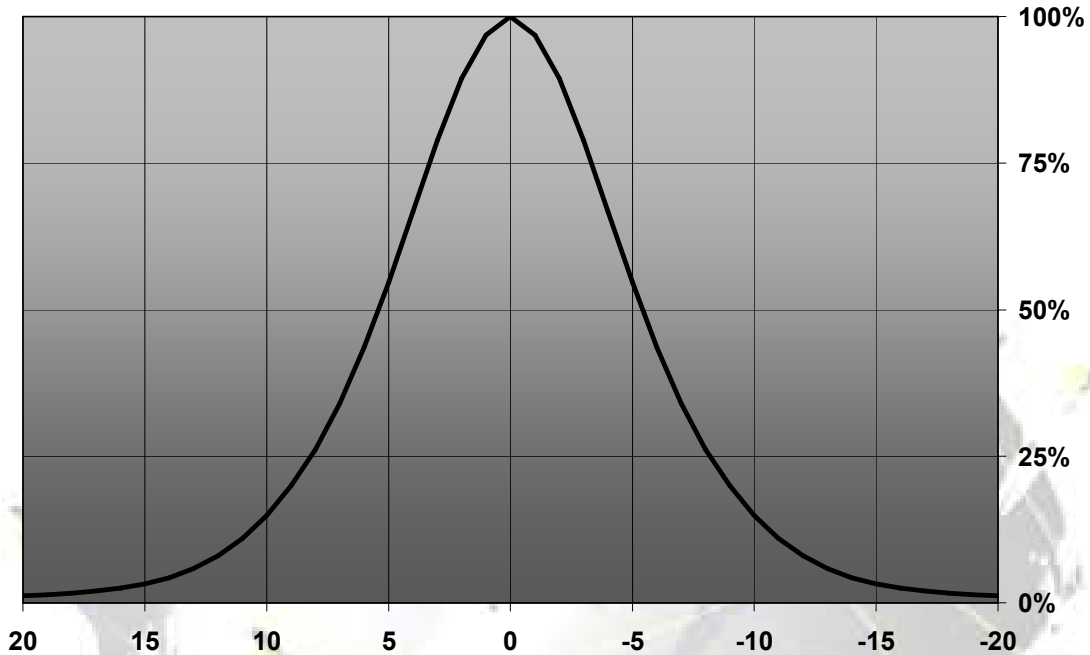
LENS TYPES

NAME	ORDERING CODE	FWHM Angle
Cute-3 Smooth Spot	C10427_Cute-3-M	±5.9°
Cute-3 Medium	C10428_Cute-3-SS	±10°
Cute-3 Wide	C10429_Cute-3-W	±16.2°

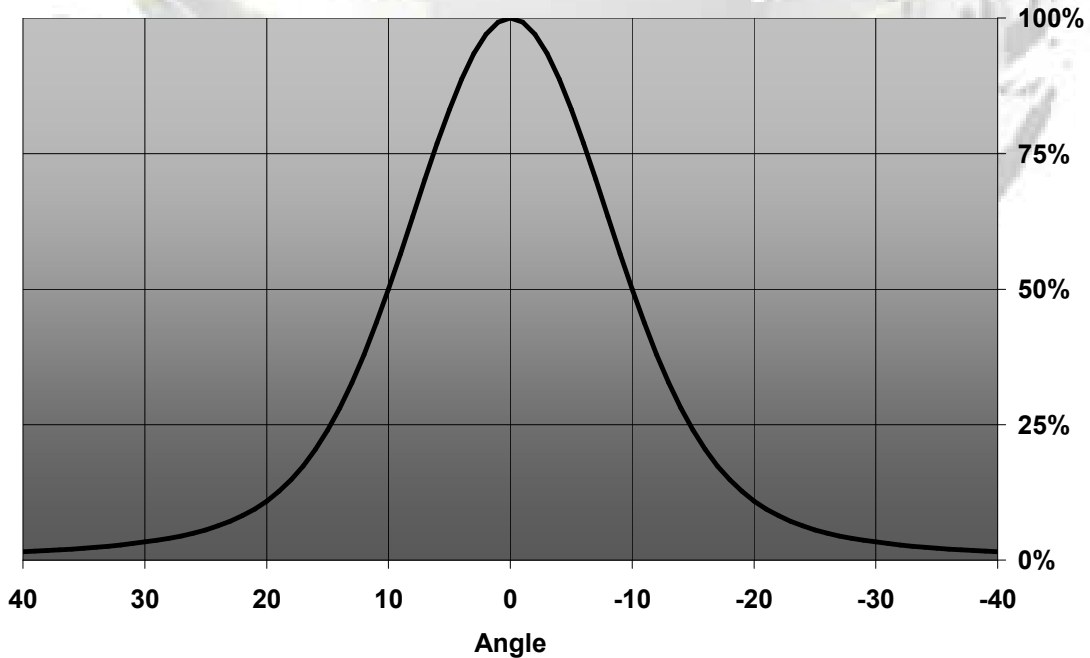
© Ledil Oy – PRELIMINARY - Subject to change without prior notice

MEASUREMENT DATA

Relative Intensity of C10428_Cute-3-SS

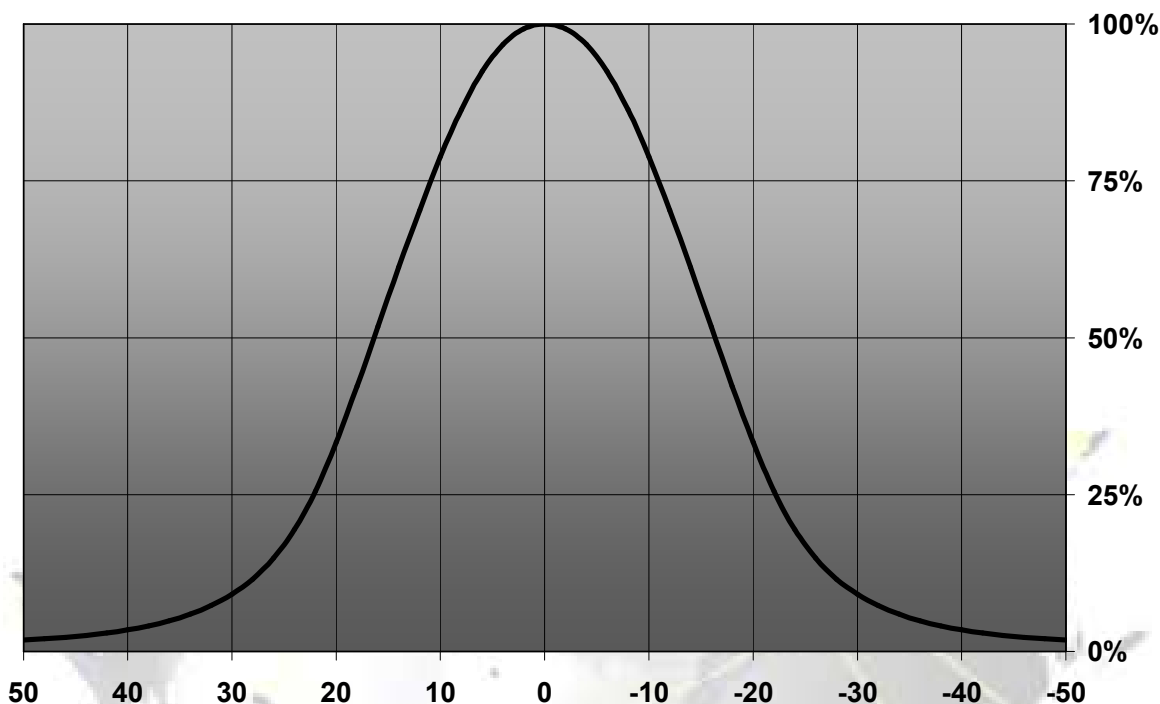


Relative Intensity of 10427_Cute-3-M



© Ledil Oy – PRELIMINARY - Subject to change without prior notice

Relative Intensity of C10429_Cute-3-W



EULUMDAT & IES FILES AVAILABLE BY REQUEST

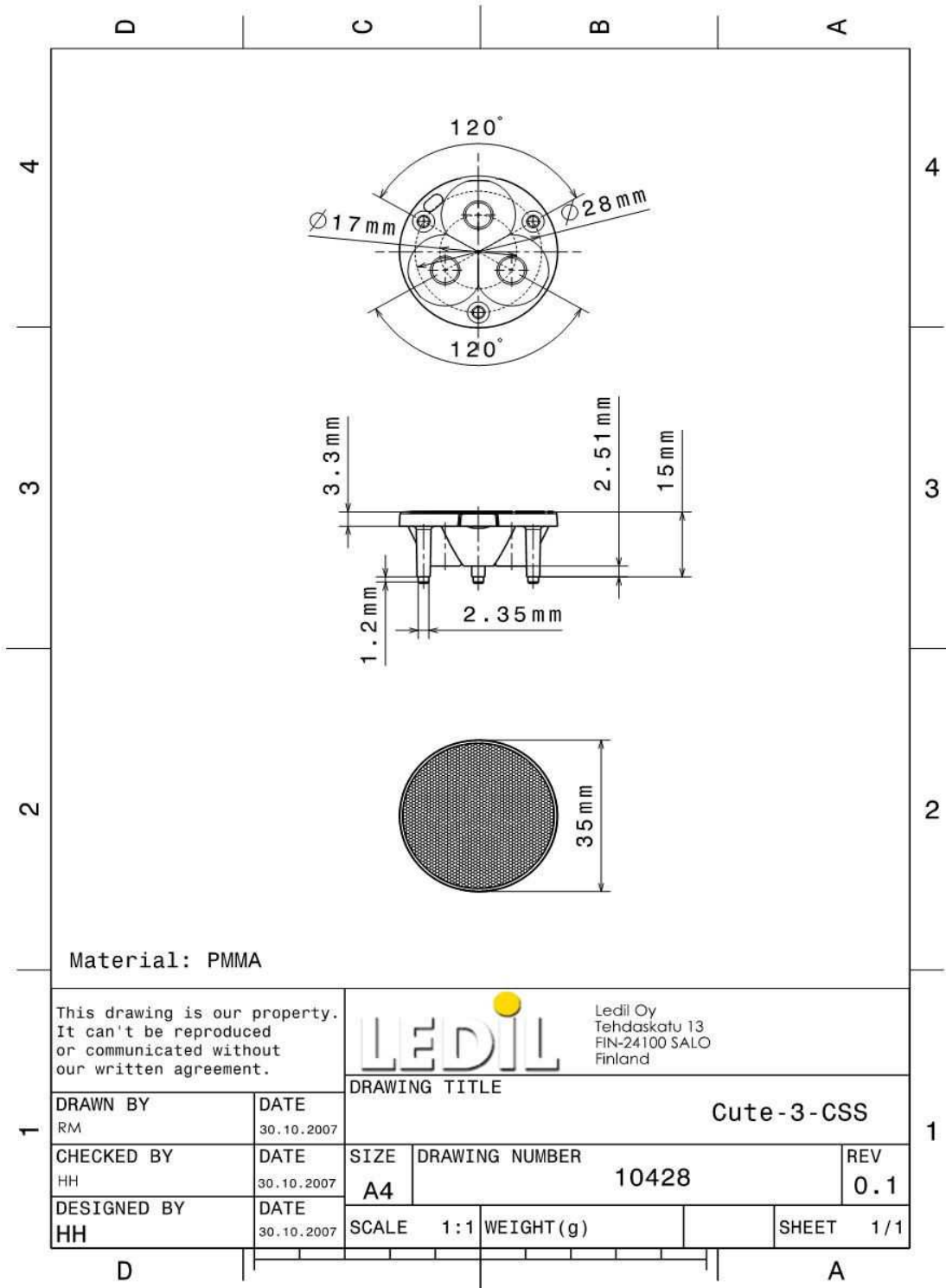
© Ledil Oy – PRELIMINARY - Subject to change without prior notice

Ledil Oy
 Tehdaskatu 13
 FIN-24100 SALO, Finland

www.ledil.com
 email: ledil@ledil.com
 FAX: +358-2-733 8001

2009-11-28

DRAWINGS



© Ledil Oy - PRELIMINARY - Subject to change without prior notice