

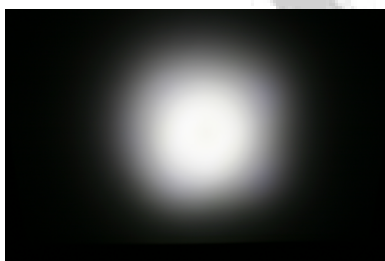
## Cute-3-XP (MR11), lenses for CREE XP-E LEDs



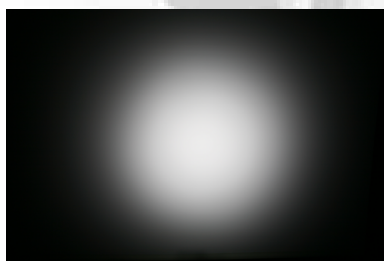
- Specially designed for Cree XLAMP XP-E series of LEDs.
- Special care taken to make a uniform white or warm white illumination. Lenses work well with other colors, too.
- Lens material optical grade PMMA. Allows use of high current and temperature conditions (105°C/220°F)
- No lens holder. Fastening to heat sink with droplets of glue.
- Best available optical efficiency, up to 90%.

### LENS TYPES

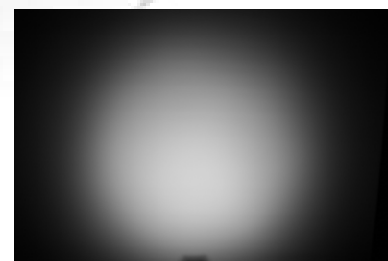
NAME	ORDERING CODE	FWHM Angle
Cute-3 Smooth Spot	C10754_Cute-3-SS-XP	±5°
Cute-3 Medium	C10755_Cute-3-M-XP	±11°
Cute-3 Wide	C10756_Cute-3-W-XP	±20°



C10754\_Cute-3-SS-XP



C10755\_Cute-3-M-XP

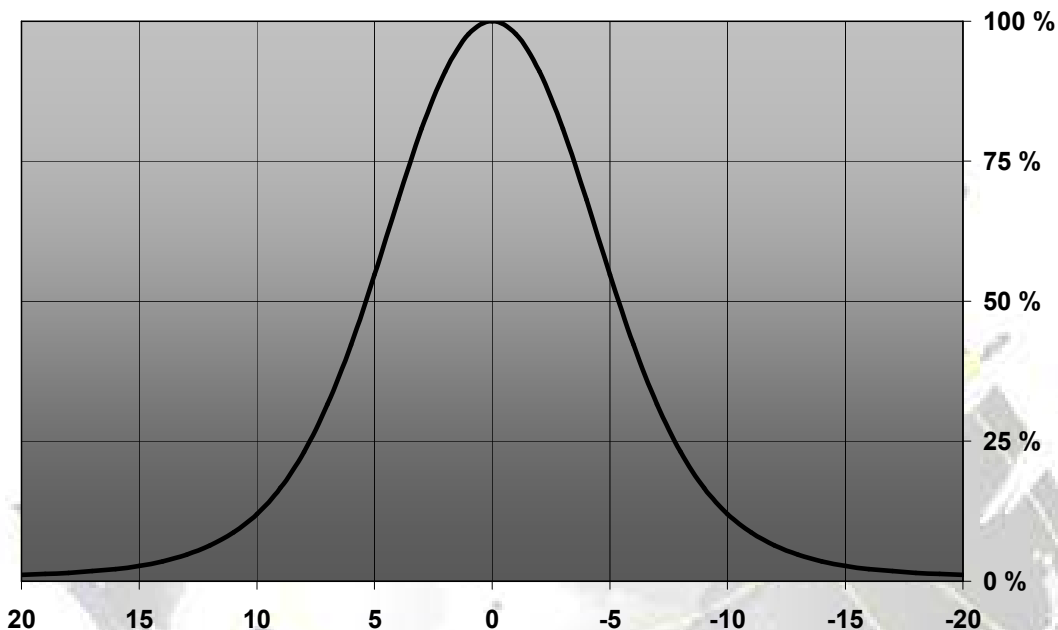


C10756\_Cute-3-W-XP

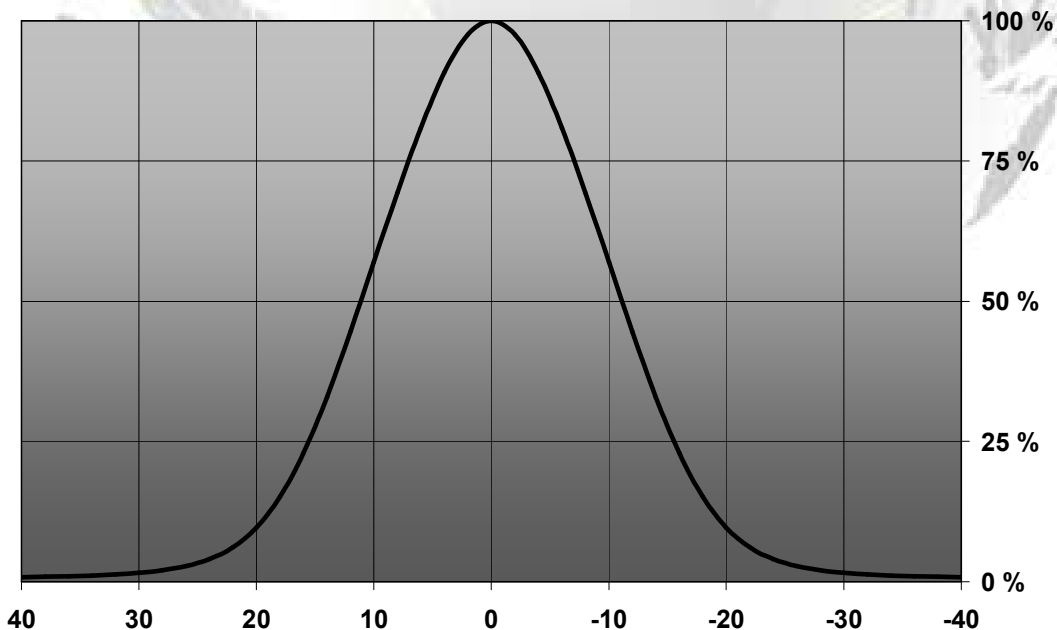
© Ledil Oy – PRELIMINARY - Subject to change without prior notice

## MEASUREMENT DATA

Relative Intensity of C10754\_Cute-3-SS-XP

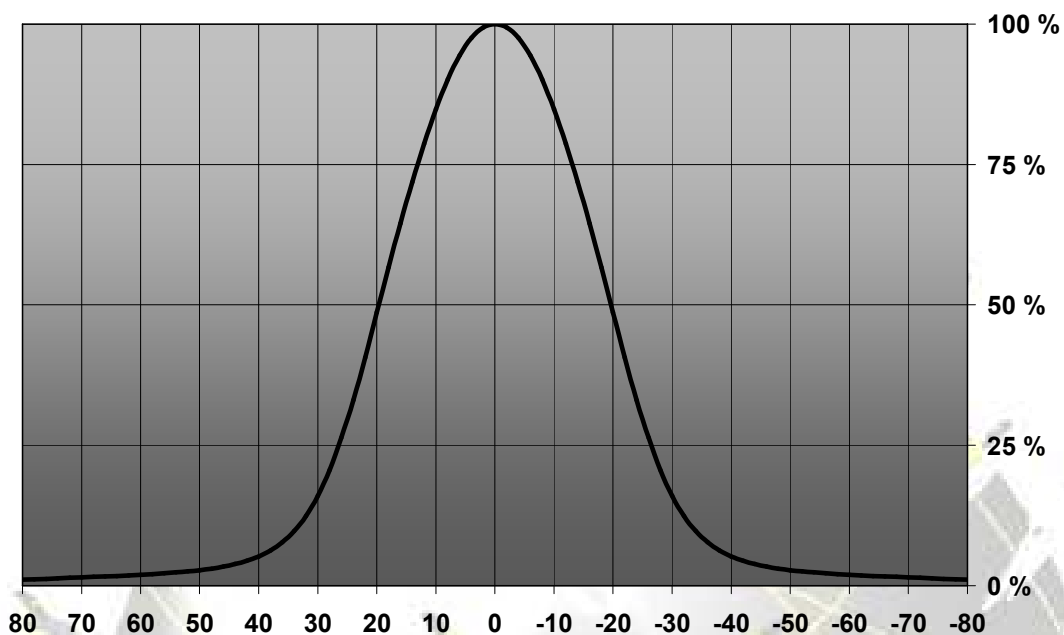


Relative Intensity of C10755\_Cute-3-M-XP



© Ledil Oy – PRELIMINARY - Subject to change without prior notice

Relative Intensity of C10756\_Cute-3-W-XP



EULUMDAT & IES FILES AVAILABLE BY REQUEST

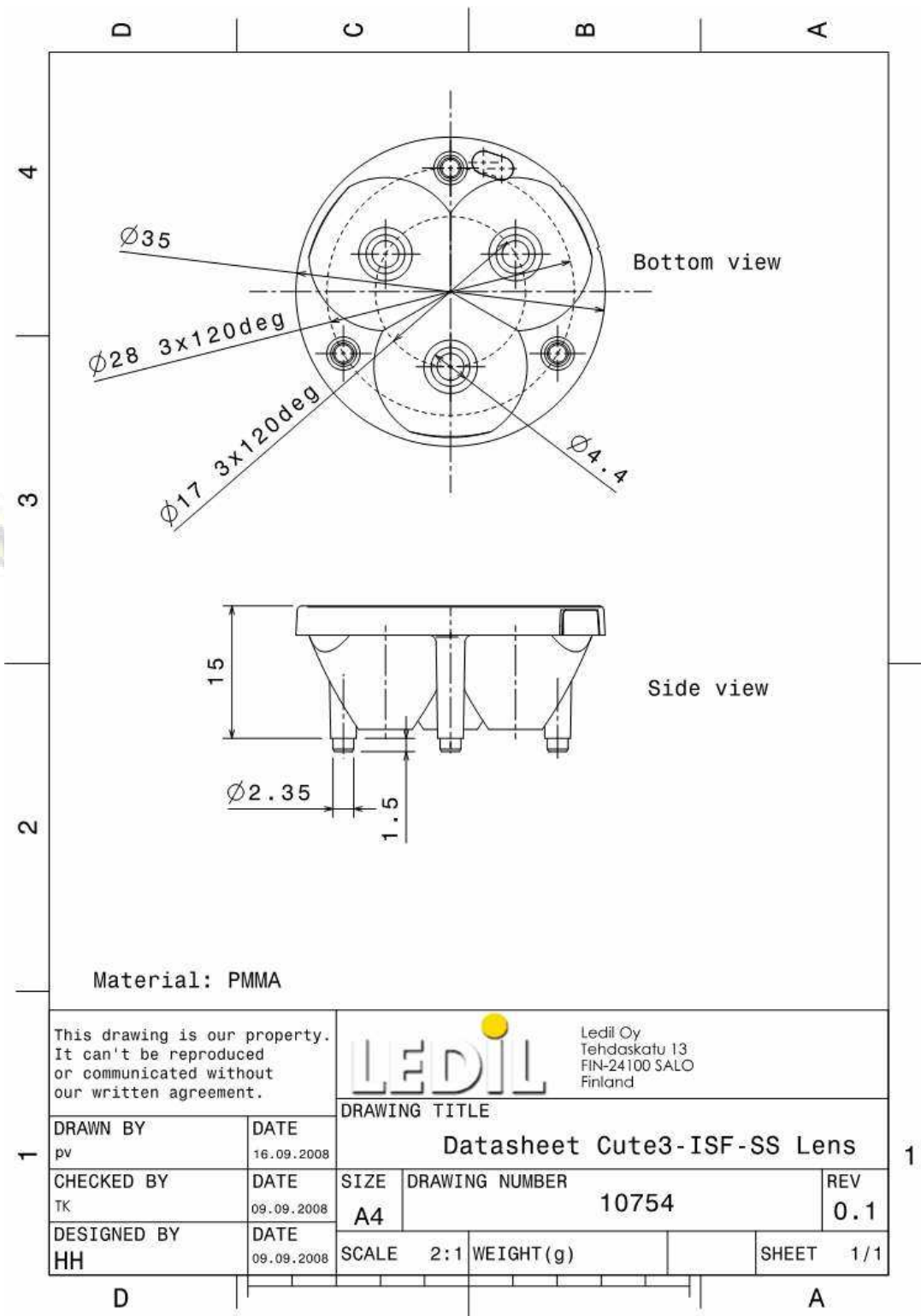
© Ledil Oy – PRELIMINARY - Subject to change without prior notice

Ledil Oy  
 Tehdaskatu 13  
 FIN-24100 SALO, Finland

[www.ledil.com](http://www.ledil.com)  
 email: [ledil@ledil.com](mailto:ledil@ledil.com)  
 FAX: +358-2-733 8001

2009-12-14

## DRAWINGS



© Ledil Oy – PRELIMINARY - Subject to change without prior notice