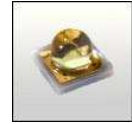


Flare-B-OSL series for Osram Oslon SSL/SX LEDs



- Lens designed for Osram Oslon SSL series of LEDs
- Lens material optical grade PMMA with high UV and temperature resistance (105°C/220°F). Allows use of high current and temperature conditions
- Best available optical efficiency
- Fastening to PCB & heat sink with 2 screws (C10946_Flare-B-OSL) or very easy assembly with TAPE
- LED can be assembled parallel or perpendicular to the x,y axis (to turn the light distribution by 90°)
- Compact dimensions 23 x 25 mm. Square form enables easy build of a line without any gaps between lenses.
- Especially suitable for Beacon and other 360° solutions and in linear solutions with high evenness requirements
- Please check fastening details from this link:
(http://www.ledil.com/datasheets/DataSheet_TAPE.pdf)

NAME	ORDERING CODE	FWHM Angle
Flare-B-OSL Lens	C10946_Flare-B-OSL	±4.5° x ±44°
Flare-B-OSL TAPE	CA10932_Flare-B-OSL-tape	±4.5° x ±44°

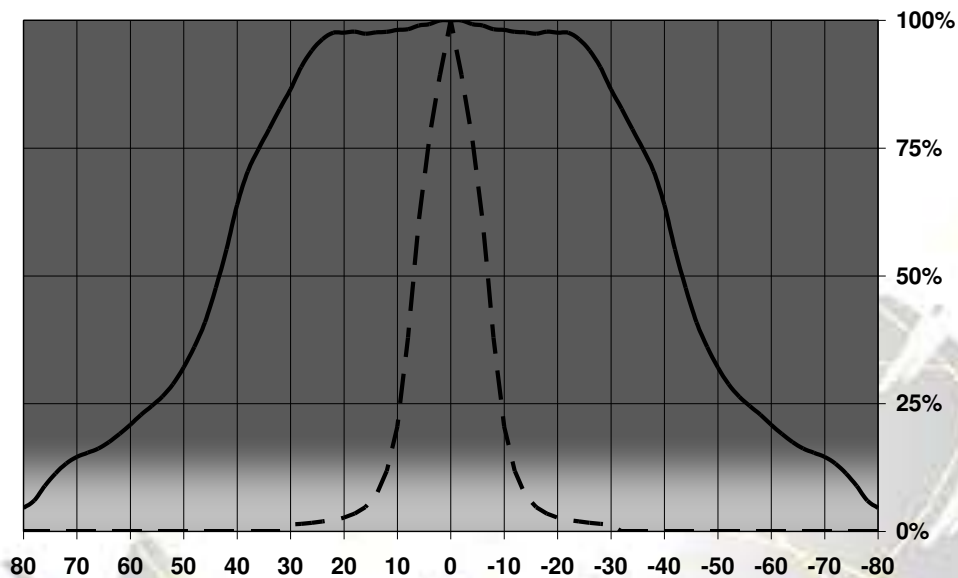
NAME	ORDERING CODE	FWHM Angle
Flare-B-OSL Lens	C10946_Flare-B-OSL-SX	To be measured shortly
Flare-B-OSL TAPE	CA10932_Flare-B-OSL-SX-tape	To be measured shortly



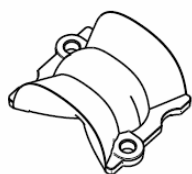
© Ledil Oy - Subject to change without prior notice

MEASUREMENTS

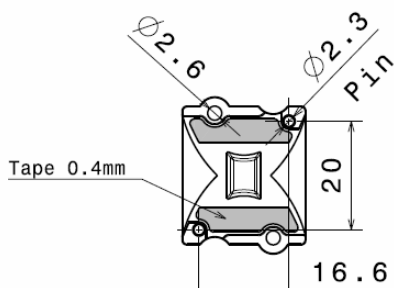
Relative Intensity of C10946_Flare-B-OSL



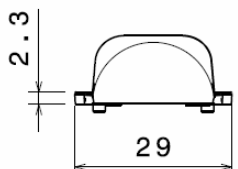
DRAWINGS



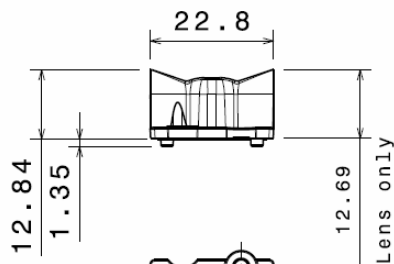
Isometric view



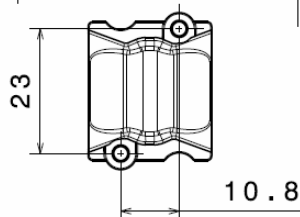
Bottom view



Right view



Front view



Top view

© Ledil Oy - Subject to change without prior notice