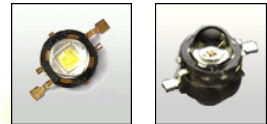


## GEENA LENS FOR SEOUL P3 & P4 LEDs



  
 SEOUL SEMICONDUCTOR



- Specially designed for Seoul Semiconductor P4 series of LEDs.
- Special care taken to make a uniform white or warm white illumination. Lens work well with other colors, too.
- Lens material optical grade PMMA. Allows use of high current and temperature conditions
- Best available optical efficiency, more than 90%, with an extremely good cutoff of light

## LENS TYPES

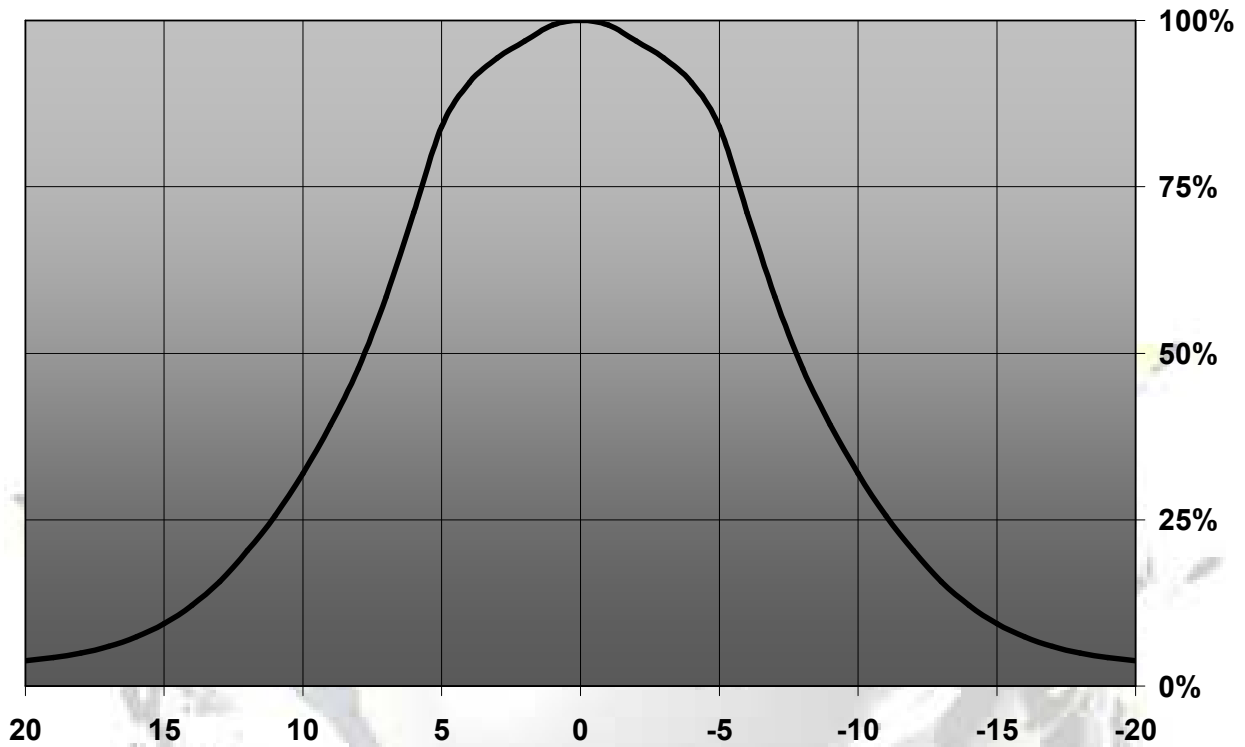
NAME	ORDERING CODE	FWHM Angle
Geena	C10959_Geena	±8°



© Ledil Oy – PRELIMINARY - Subject to change without prior notice

**MEASUREMENT DATA**

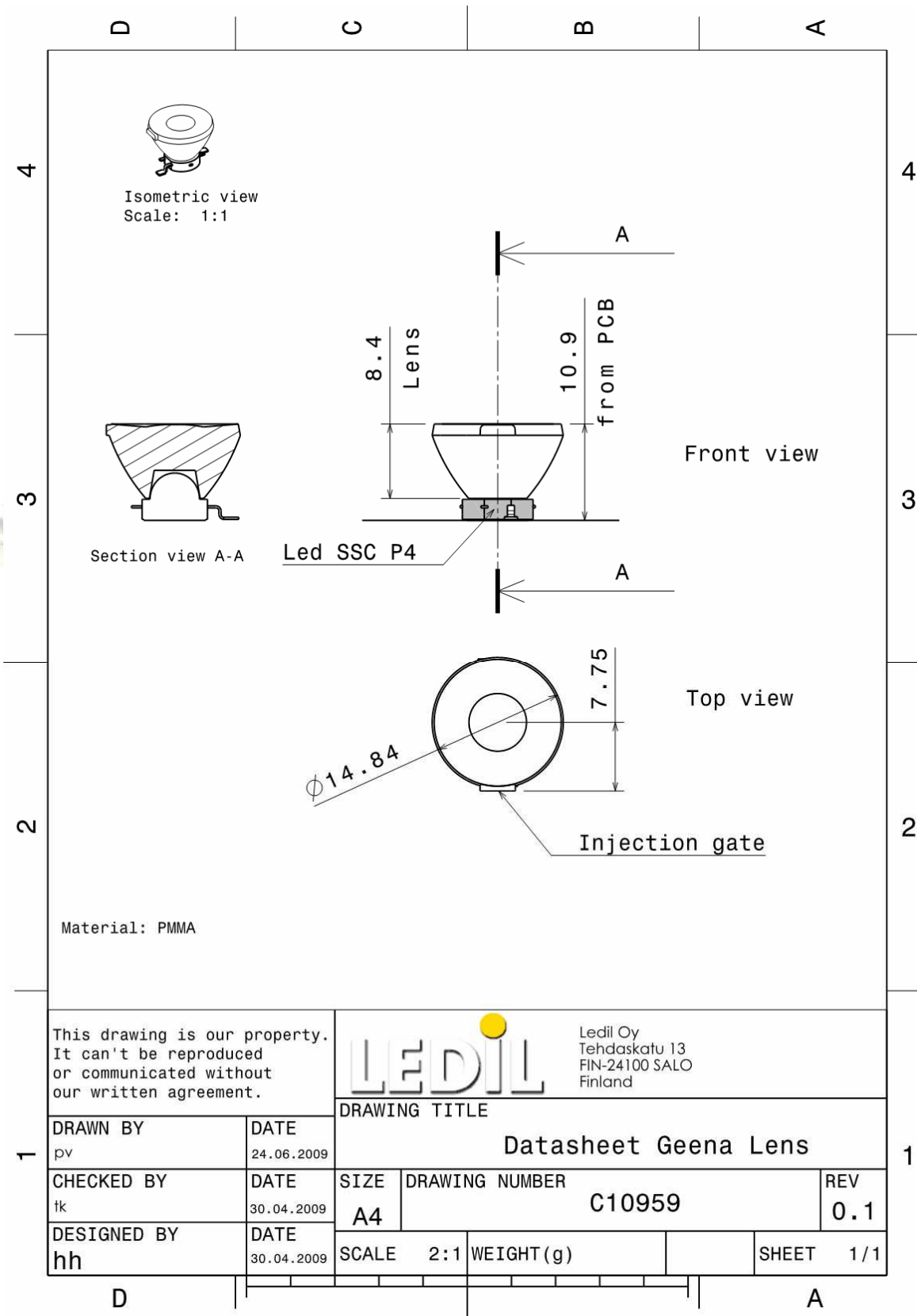
Relative Intensity of C10959\_Geena



EULUMDAT &amp; IES FILES AVAILABLE BY REQUEST

© Ledil Oy – PRELIMINARY - Subject to change without prior notice

## DRAWINGS



© Ledil Oy - PRELIMINARY - Subject to change without prior notice