

LO2 LENSES FOR OSRAM-OS DRAGON/DRAGON+ LEDs



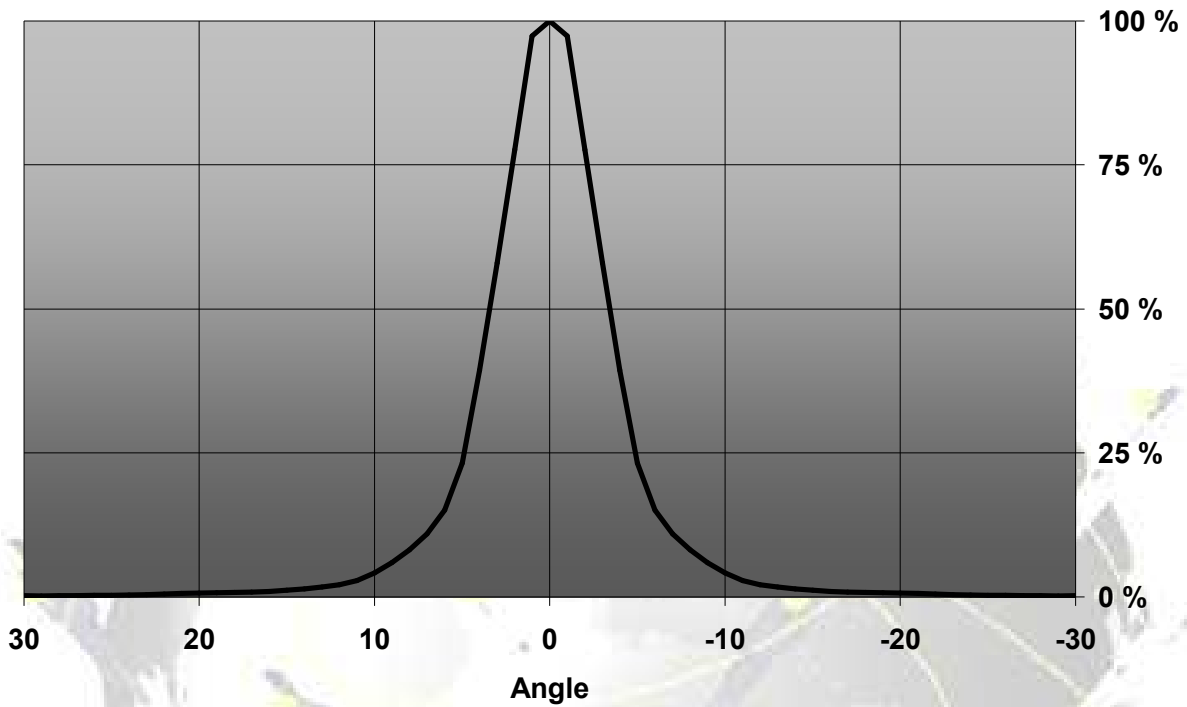
- Specially designed for Osram-os Golden Dragon+ series of LEDs, but works well with Platinum Dragon LEDs too.
- Special care taken to make a uniform white or warm white illumination.
- Lens material optical grade PMMA with high UV and temperature resistance (105°C/220°F). Allows use of high current and temperature conditions
- Best available optical efficiency, more than 90%, with an extremely good cutoff of light
- Integrated holder. Fastening to heat sink with a PU foam adhesive tape of automotive grade
- We advise customer to ensure the suitability and sufficiency of the bond in the end product. For example, mechanical stress, vibration and holes on the surface of the circuit board weaken the strength of the tape.
- Please check fastening details from this link:
(http://www.ledil.com/datasheets/DataSheet_TAPE.pdf)

LENS TYPES

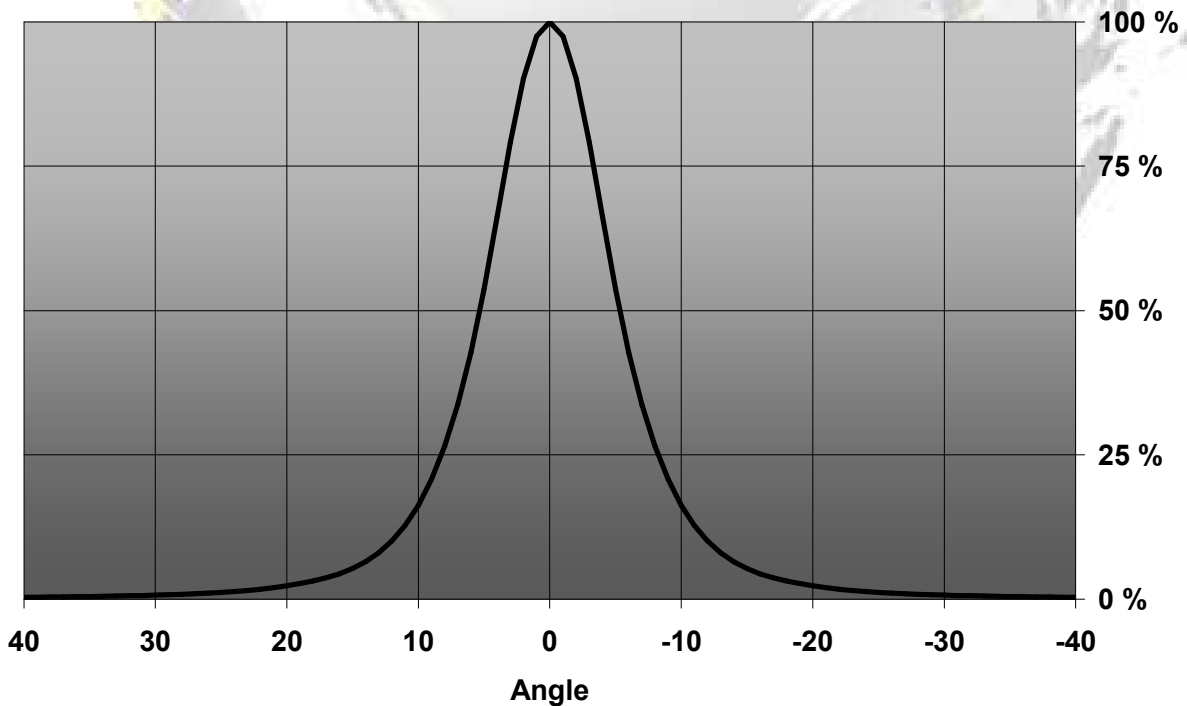
NAME	ORDERING CODE	FWHM Angle
LO2 REAL SPOT	FA10751_LO2-RS	±3.5°
LO2 DIFFUSER	FA10753_LO2-D	±5.5°
LO2 MEDIUM	FA10750_LO2-M	±13°
LO2 OVAL	FA11135_LO2-O-90	±20.5° x ±6°
LO2 RECTANGULAR	FA10752_LO2-REC	±19° x ±11.8°
LO2 WIDE	CA11136_LO2-W	±22°

MEASUREMENT DATA

Relative Intensity of LO2-RS

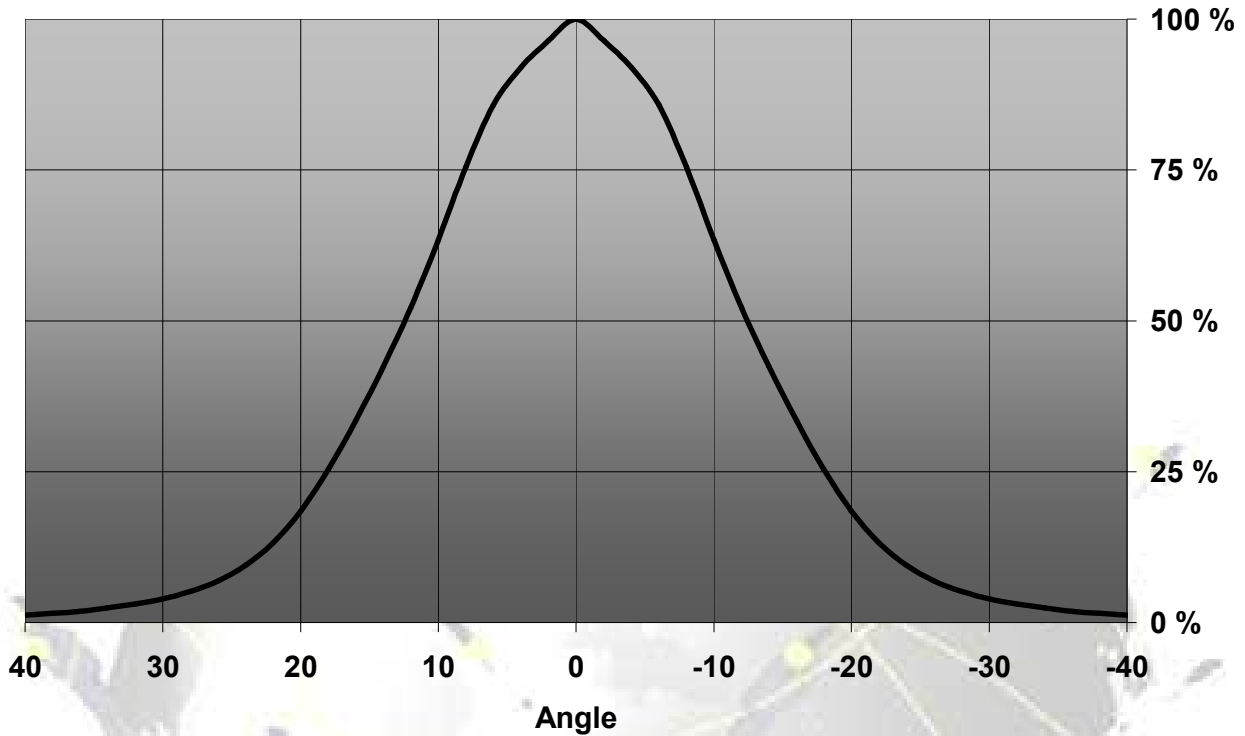


Relative Intensity of LO2-D

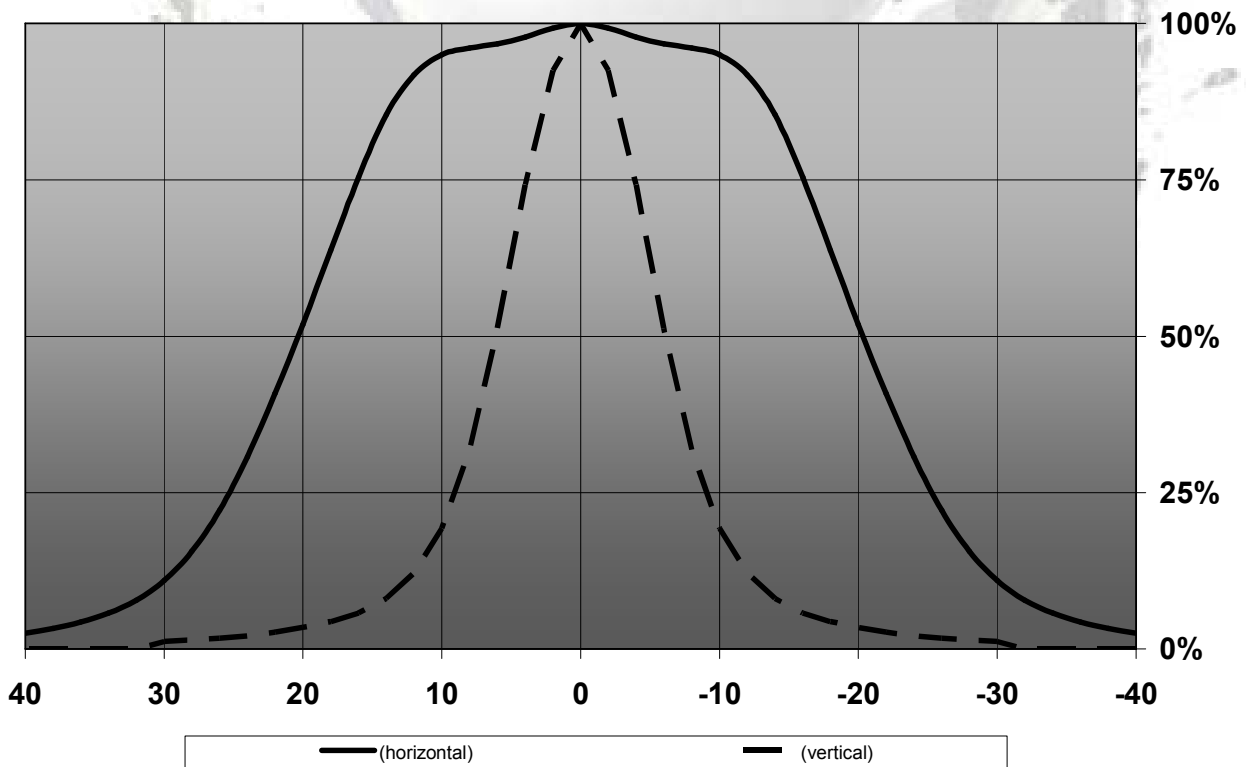


© Ledil Oy – PRELIMINARY - Subject to change without prior notice

Relative Intensity of LO2-M

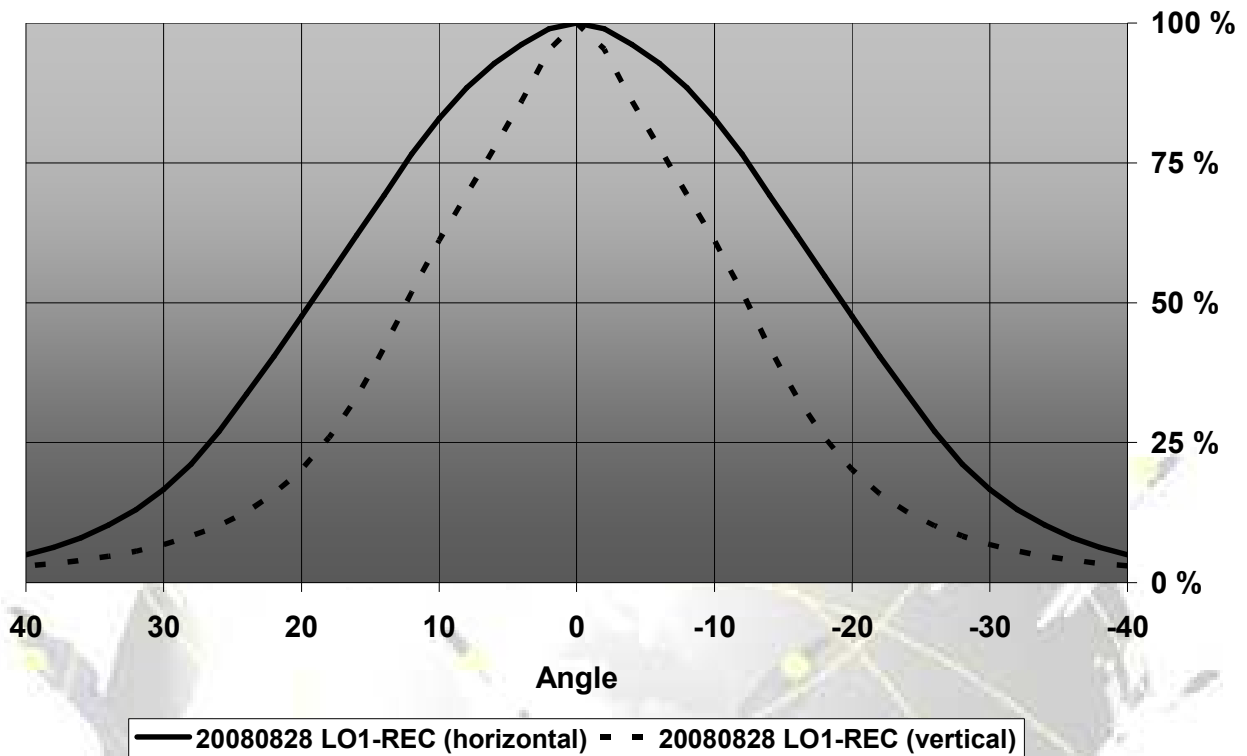


Relative Intensity of FA11135_LO2-O-90

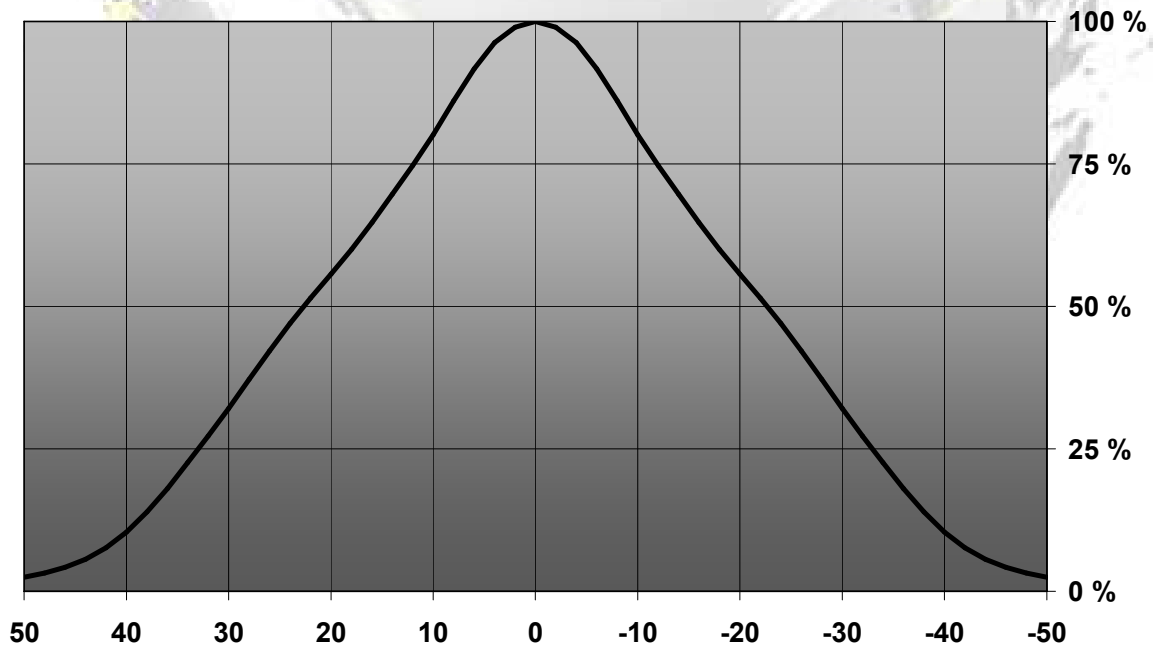


© Ledil Oy – PRELIMINARY - Subject to change without prior notice

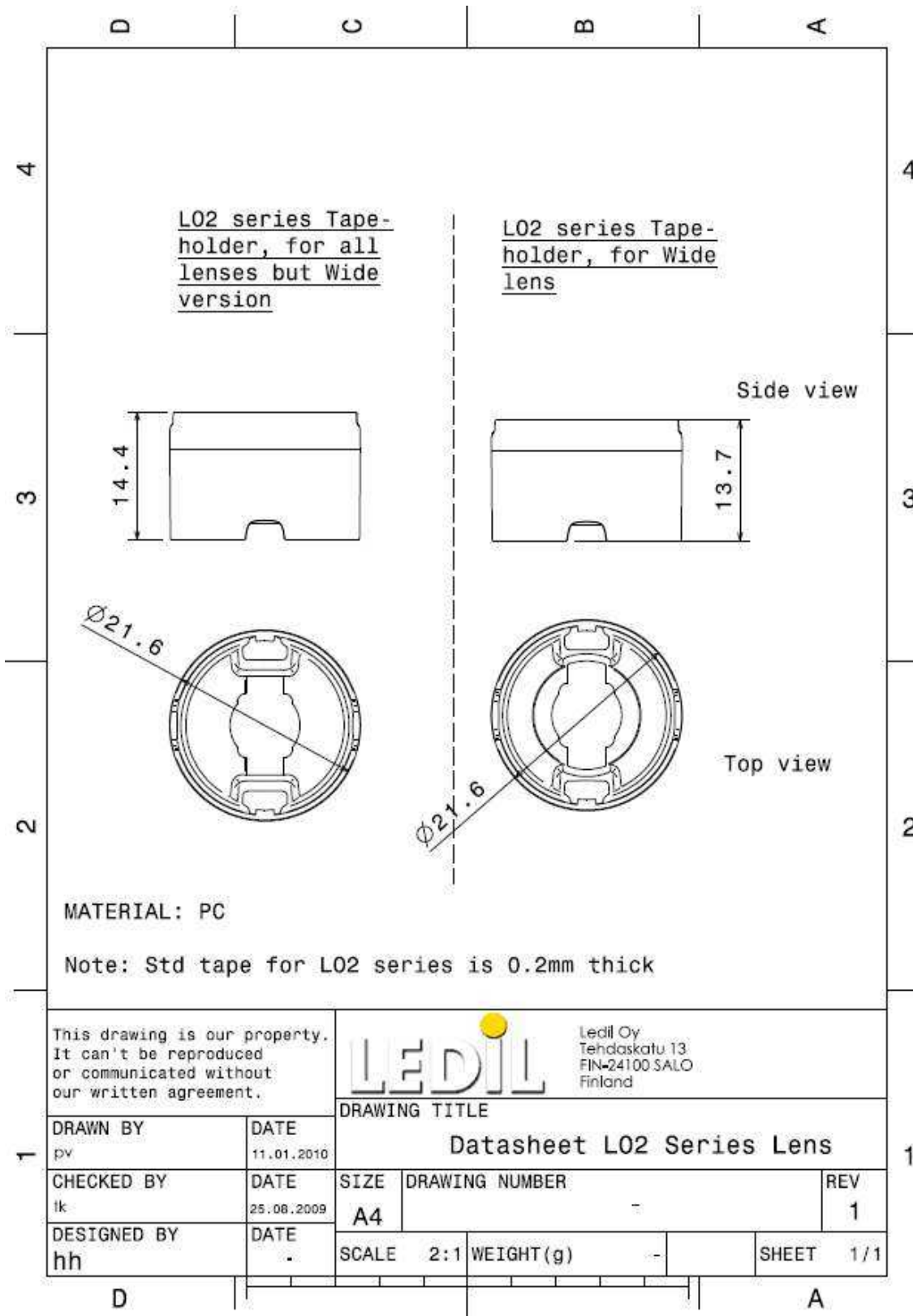
Relative Intensity of LO2-REC



Relative Intensity of CA11136_LO2-W



DRAWINGS



© Ledil Oy - PRELIMINARY - Subject to change without prior notice