

LXP LENSES FOR CREE XP-E LEDs



- Specially designed for Cree XLAMP XP-E series of LEDs.
- Special care taken to make a uniform white or warm white illumination.
- Lens material optical grade PMMA with high UV and temperature resistance (105°C/220°F). Allows use of high current and temperature conditions.
- Best available optical efficiency, more than 90%, with an extremely good cutoff of light.
- Fastening to heat sink with a PU foam **adhesive tape** of automotive grade.
- We advise customer to ensure the suitability and sufficiency of the bond in the end product. For example, mechanical stress, vibration and holes on the surface of the circuit board weaken the strength of the tape.
- Please check fastening details from this link:
(http://www.ledil.com/datasheets/DataSheet_TAPE.pdf)

LENS TYPES

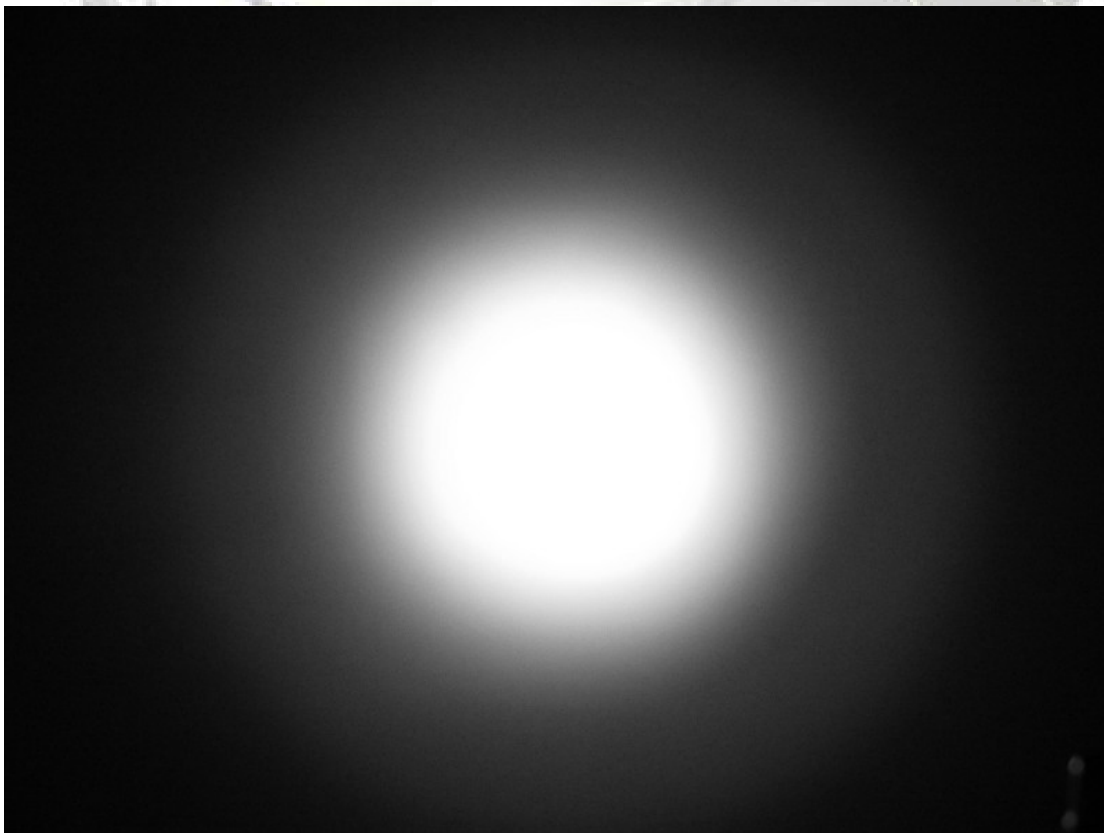
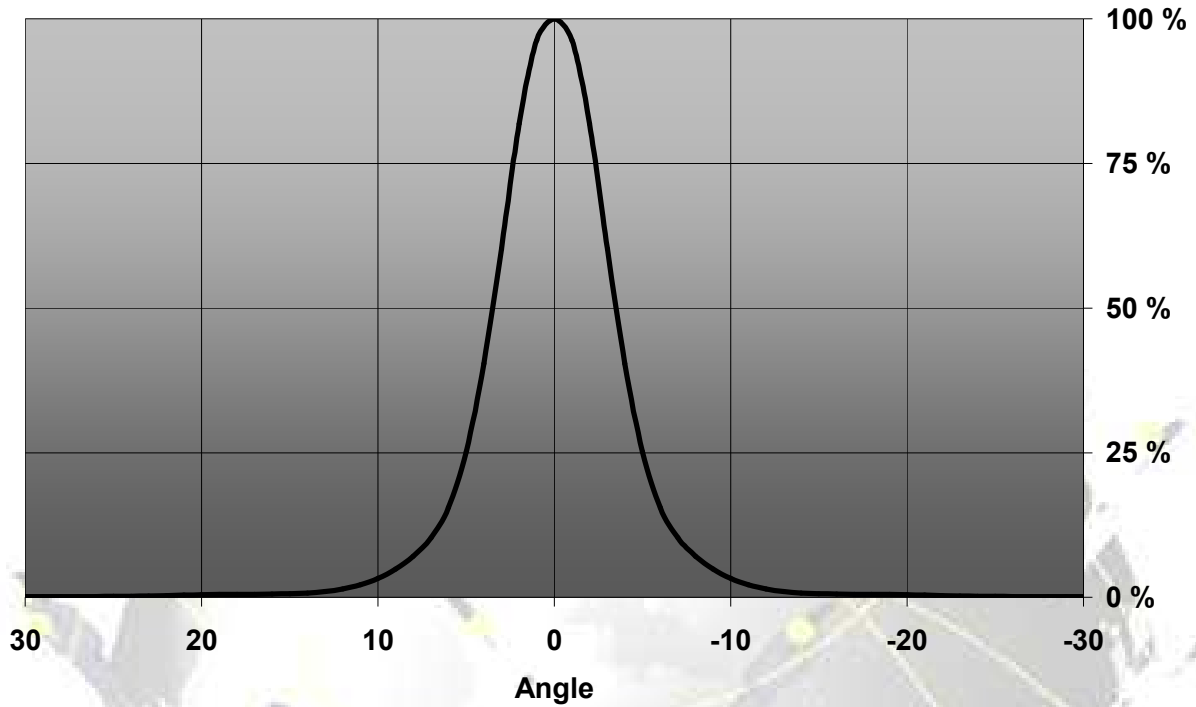
NAME	ORDERING CODE	FWHM Angle
LXP REAL SPOT	FA10661_LXP-RS	±3°
LXP DIFFUSER	FA10663_LXP-D	±6°
LXP MEDIUM	FA10660_LXP-M	±11°
LXP MEDIUM ver.2	FA11450_LXP-M2	Coming soon
LXP OVAL	FA11116_LXP-O-90	±5° x ±21°
LXP RECTANGULAR	FA10662_LXP-REC	±20° x ±11°
LXP WIDE	FA10832_LXP-W	±23°

EULUMDAT & IES FILES AVAILABLE BY REQUEST

© Ledil Oy – PRELIMINARY - Subject to change without prior notice

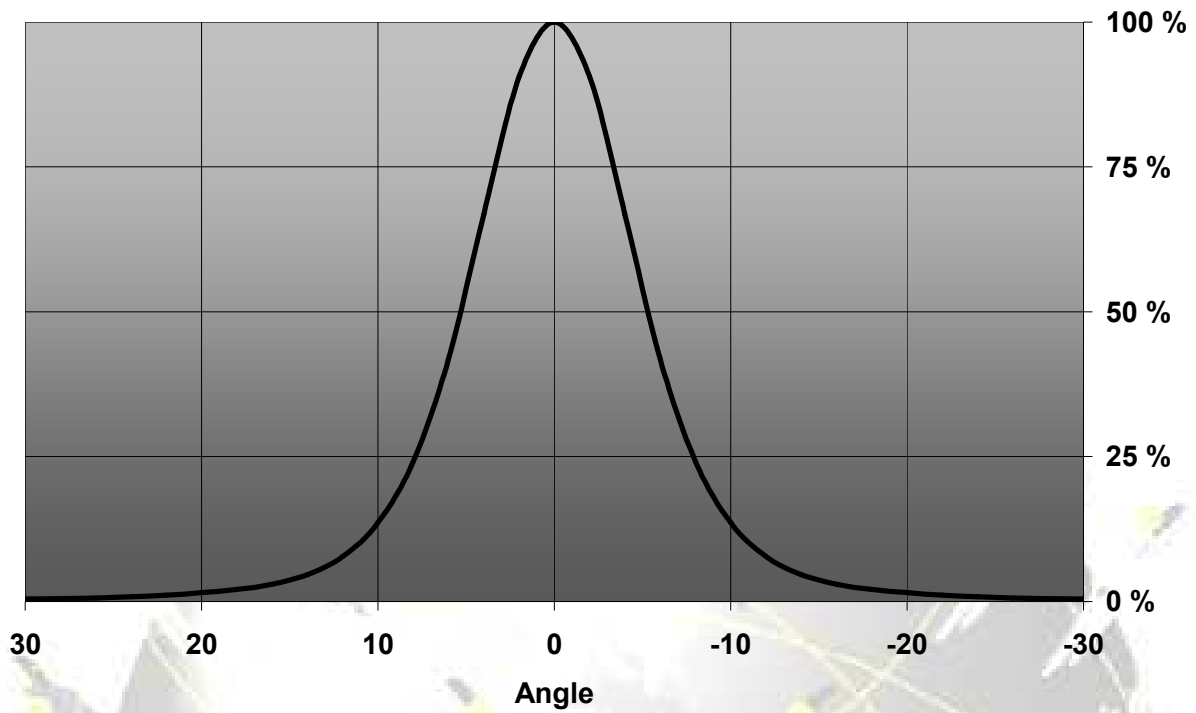
MEASUREMENT DATA

Relative Intensity of LXP-RS



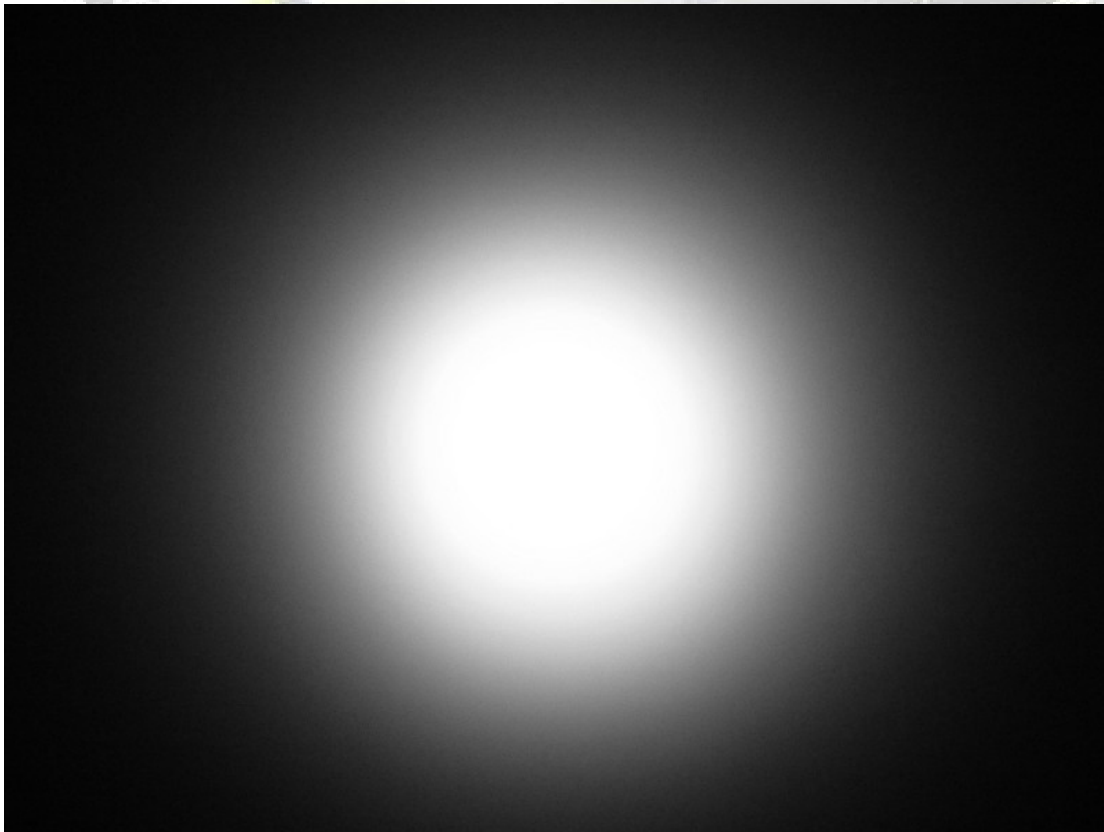
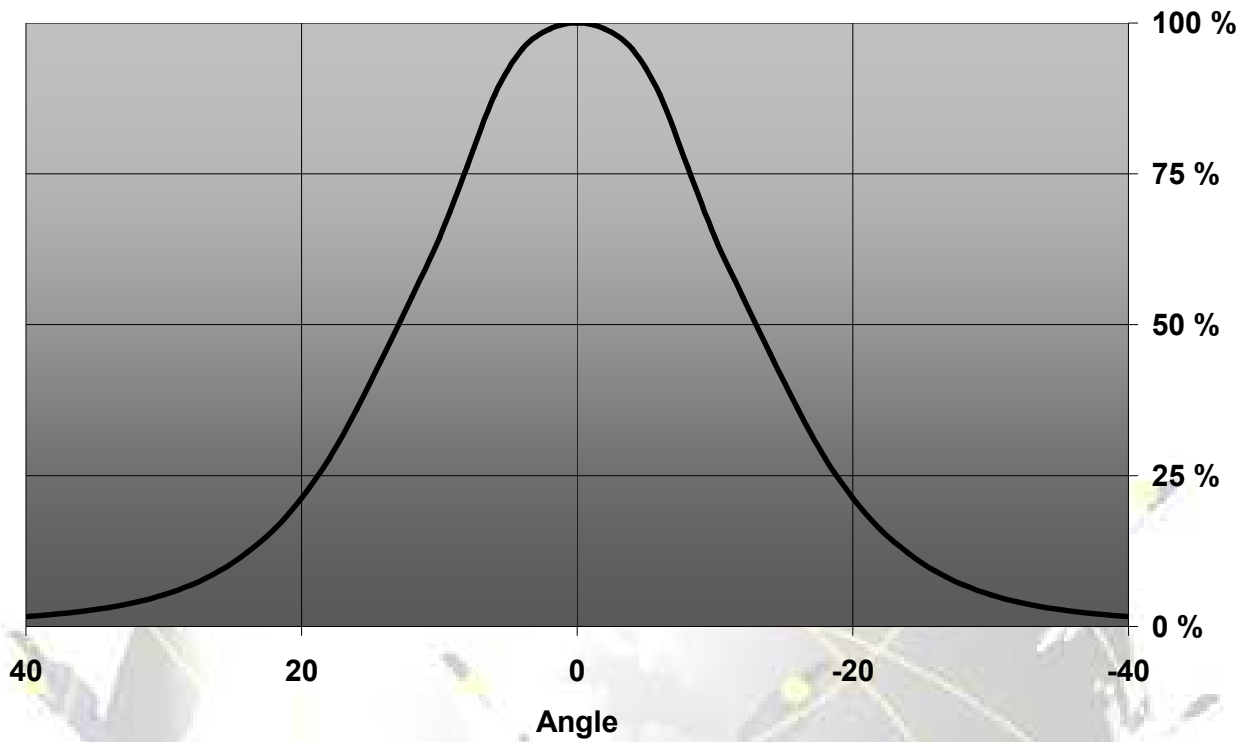
© Ledil Oy – PRELIMINARY - Subject to change without prior notice

Relative Intensity of LXP-D



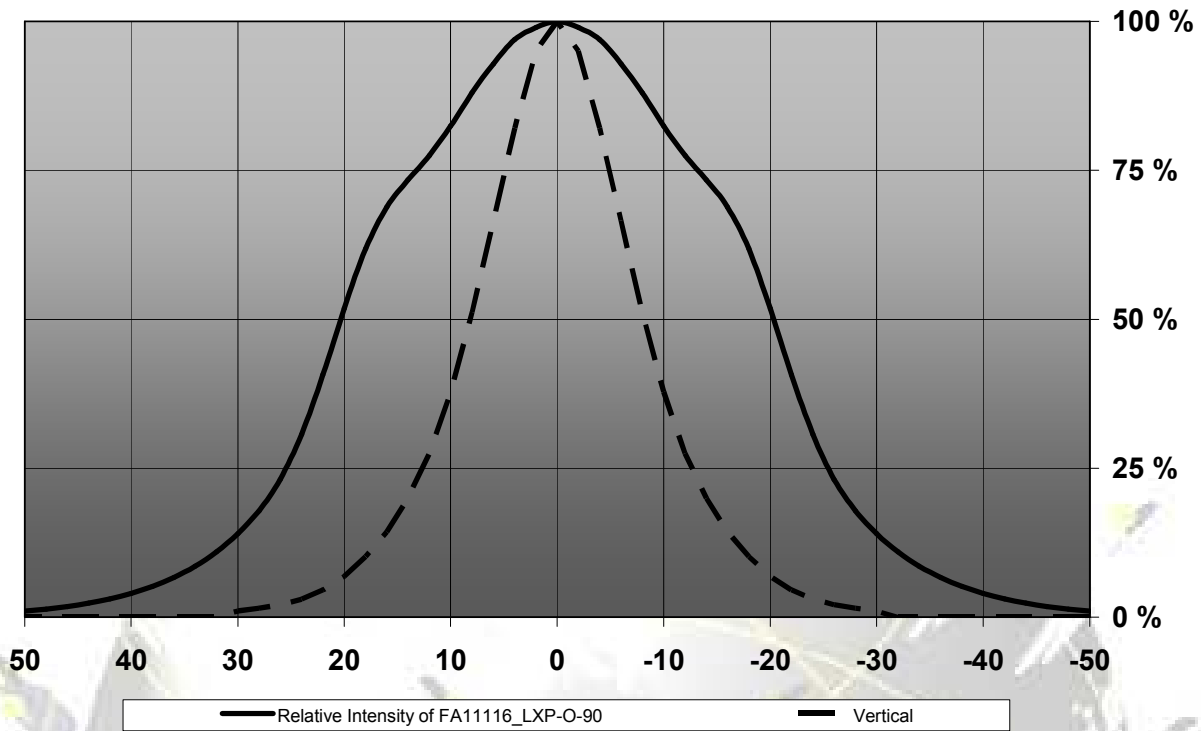
© Ledil Oy – PRELIMINARY - Subject to change without prior notice

Relative Intensity of LXP-M



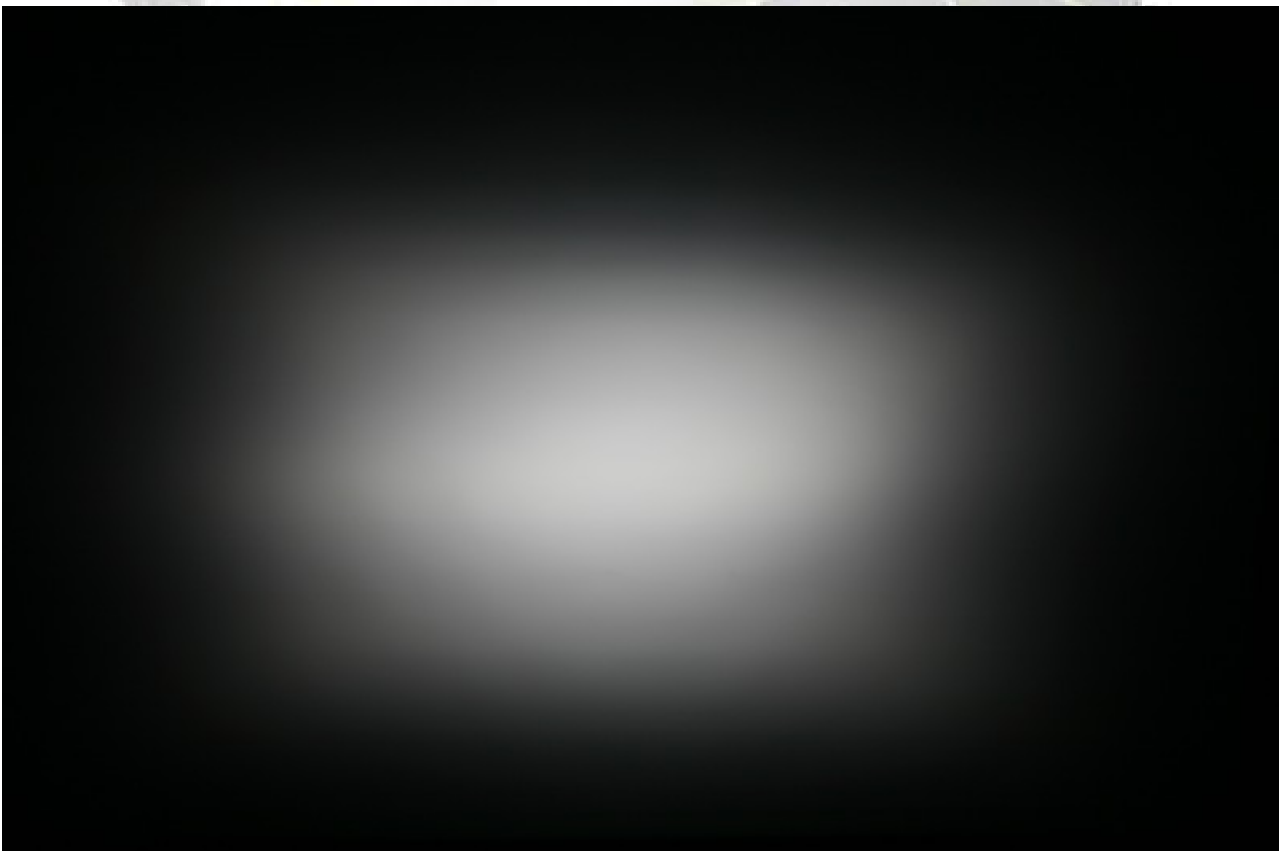
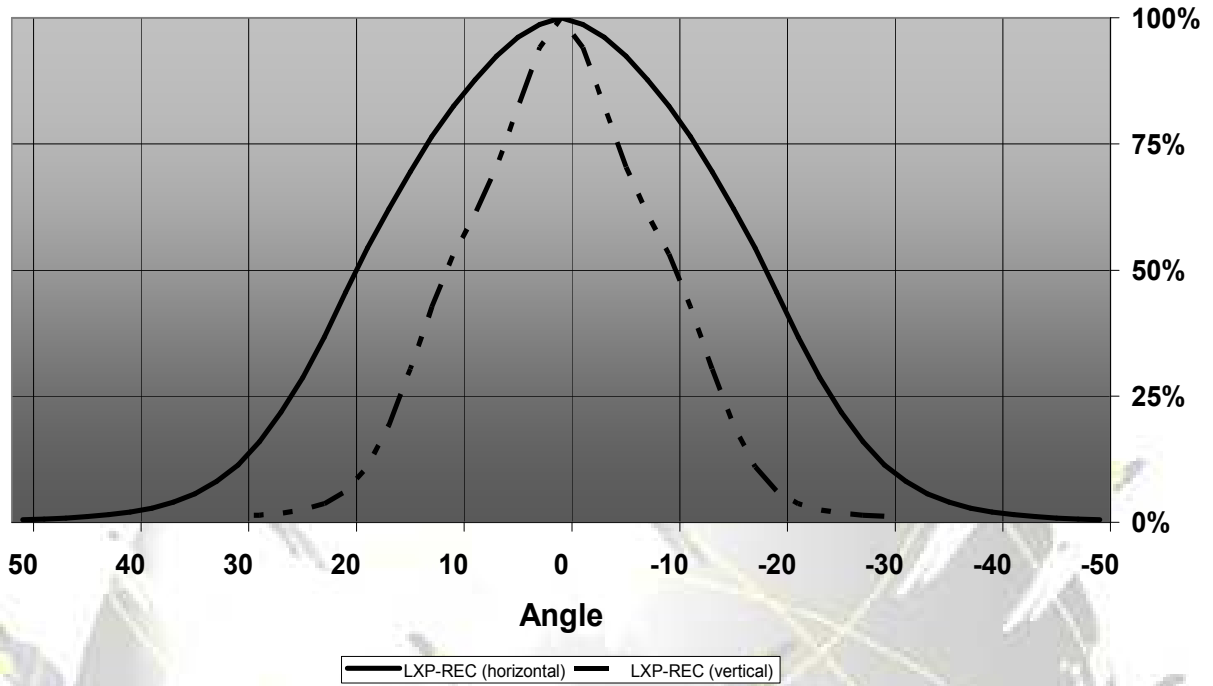
© Ledil Oy – PRELIMINARY - Subject to change without prior notice

Relative Intensity of FA11116_LXP-O-90



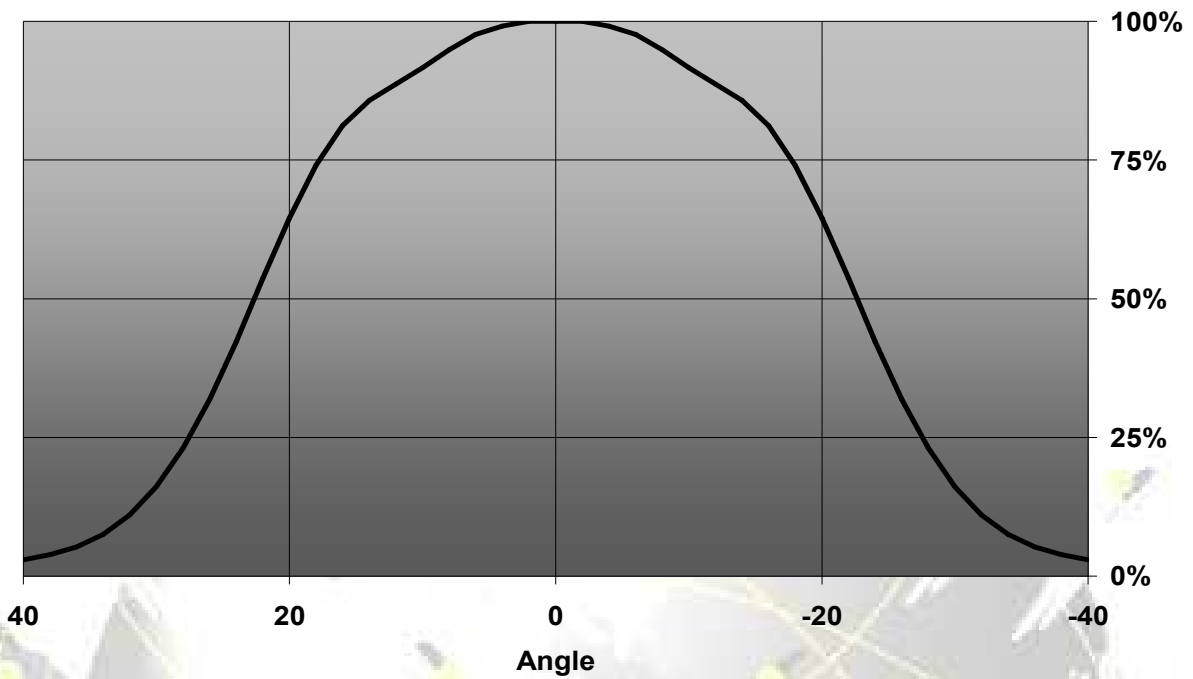
© Ledil Oy – PRELIMINARY - Subject to change without prior notice

Relative Intensity of FA10662_LXP-REC



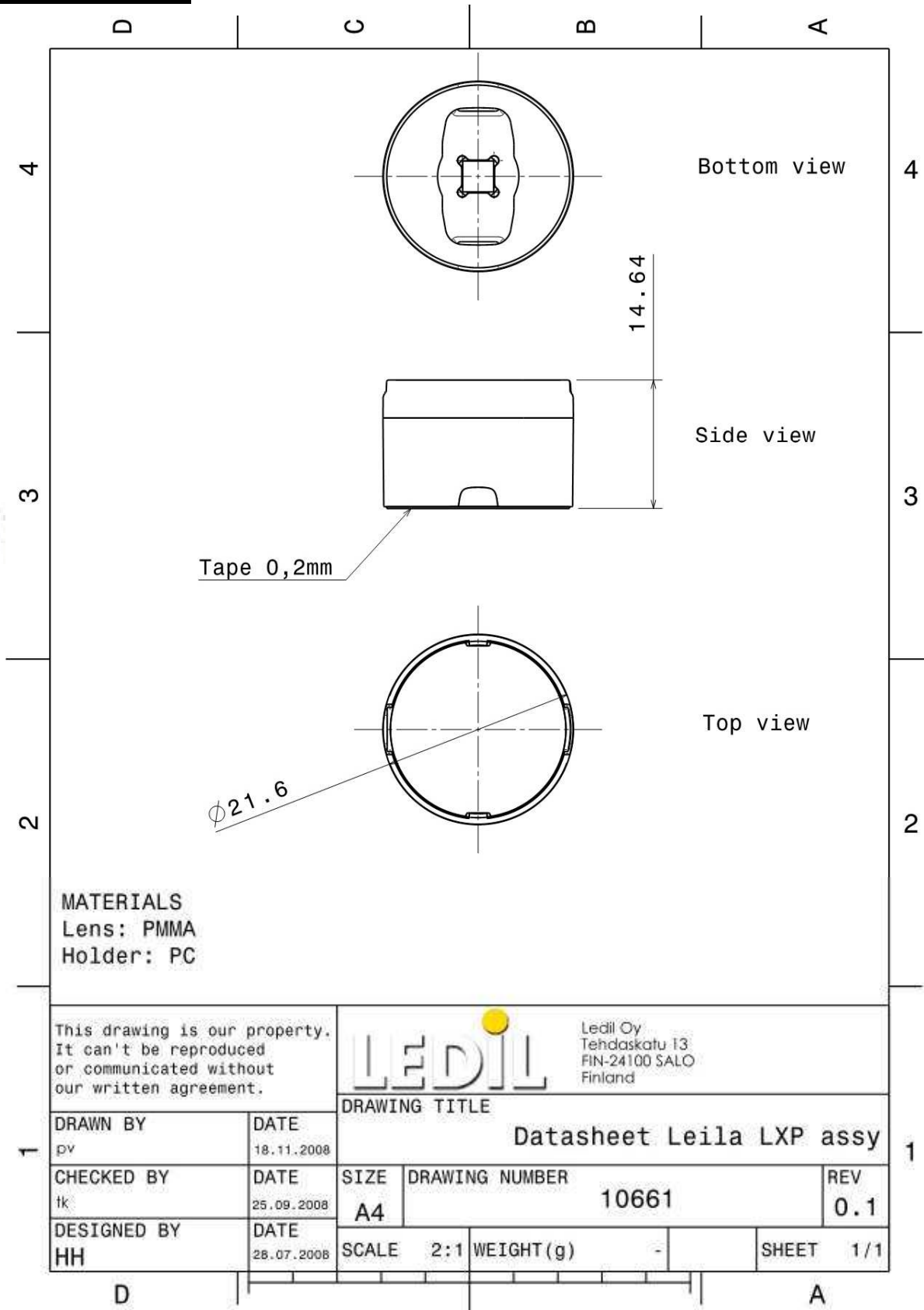
© Ledil Oy – PRELIMINARY - Subject to change without prior notice

Relative Intensity of FA10832_LXP-W



© Ledil Oy – PRELIMINARY - Subject to change without prior notice

DRAWINGS



© Ledil Oy - PRELIMINARY - Subject to change without prior notice