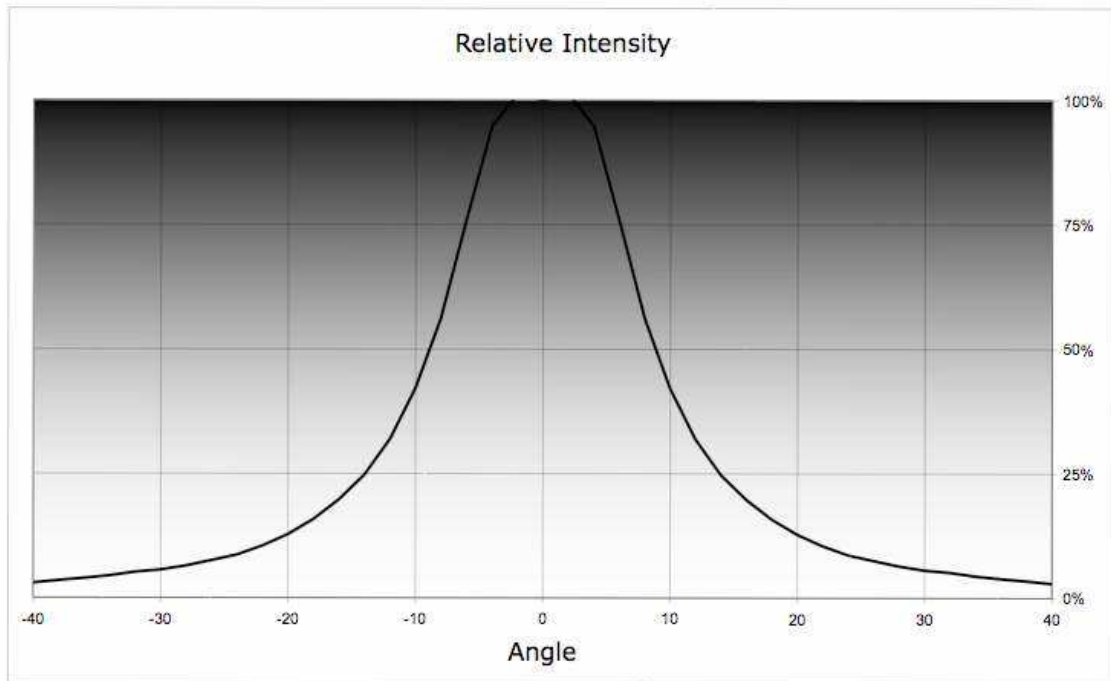


## NATALIE lens for Osram Ostar



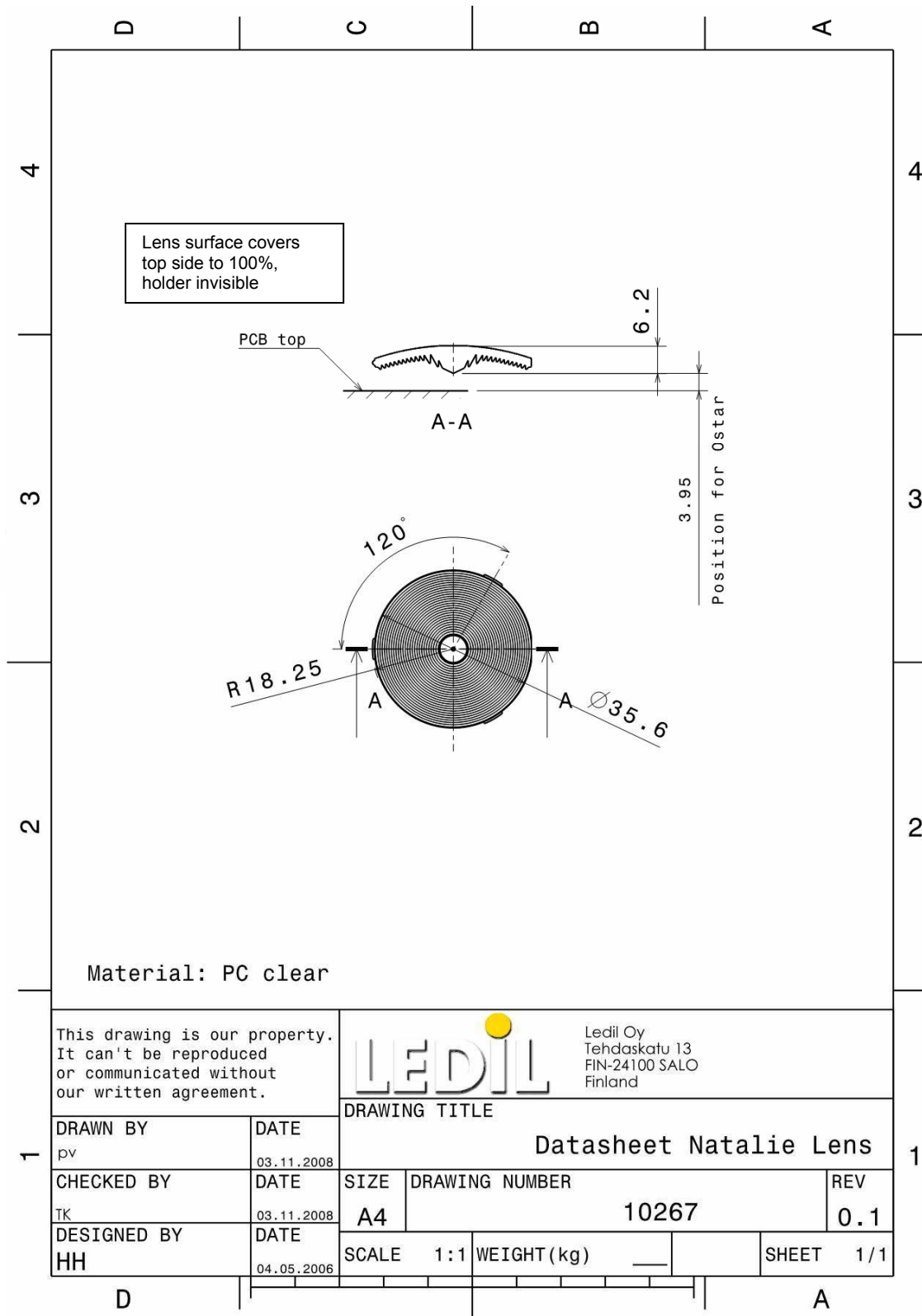
- Lens designed for Osram Ostar with primary lens. Works well for Cree Xlamp XR-E, Seoul P4 & Acriche and Luxeon K2 as well, but needs another optical positioning
- Lens material optical grade PC with high UV and temperature resistance (135°C/260°F). Allows use of high current and temperature conditions
- Best available optical efficiency
- Fastening to heat sink with 3 snap fits
- Compact dimensions: lens height is 6 mm, diameter 35.6 mm.
- **Especially suitable for MR16 replacement modules**

NAME	ORDERING CODE	FWHM Angle
NATALIE Lens for Ostar	C10267_Natalie	±9°

**MEASUREMENTS****PACKAGING**

Lenses are packed in carton boxes of 1,000 pieces in each box.

## DRAWING



© Ledil Oy - Subject to change without prior notice