

STRADA-T-DW-XP LENSES FOR CREE XP-E LEDs

- Specially designed for Cree XP-E series of LEDs.
- New extremely wide SIDE-EMITTING design with very uniform light distribution. Planned to be used mixed with Strada-T-DN lenses for optimal streetlight patterns.
- ASYMMETRICAL design with excellent usable efficiency and beam control.
- Efficiently and easily fulfilling different requirements for urban and road lighting when used together with Strada-T-DN.
- Comes with integrated positioning pins.
- Lens material optical grade PMMA with high UV and temperature resistance (105°C/220°F). Allows use of high current and temperature conditions.
- Best available optical efficiency, approximately 92%.
- Fastening to heat sink with or without PU foam adhesive tape of automotive grade, please select which suits the best for your needs.
- We advise customer to ensure the suitability and sufficiency of the bond in the end product. For example, mechanical stress, vibration and holes on the surface of the circuit board weaken the strength of the tape.
- Please check fastening details from this link:
(http://www.ledil.com/datasheets/DataSheet_TAPE.pdf)

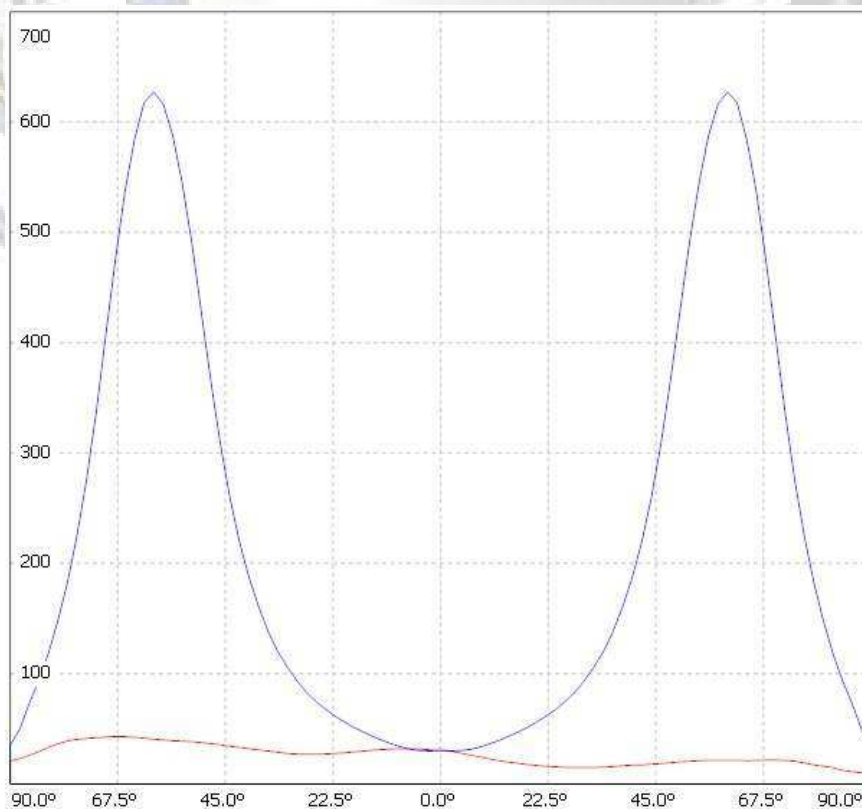
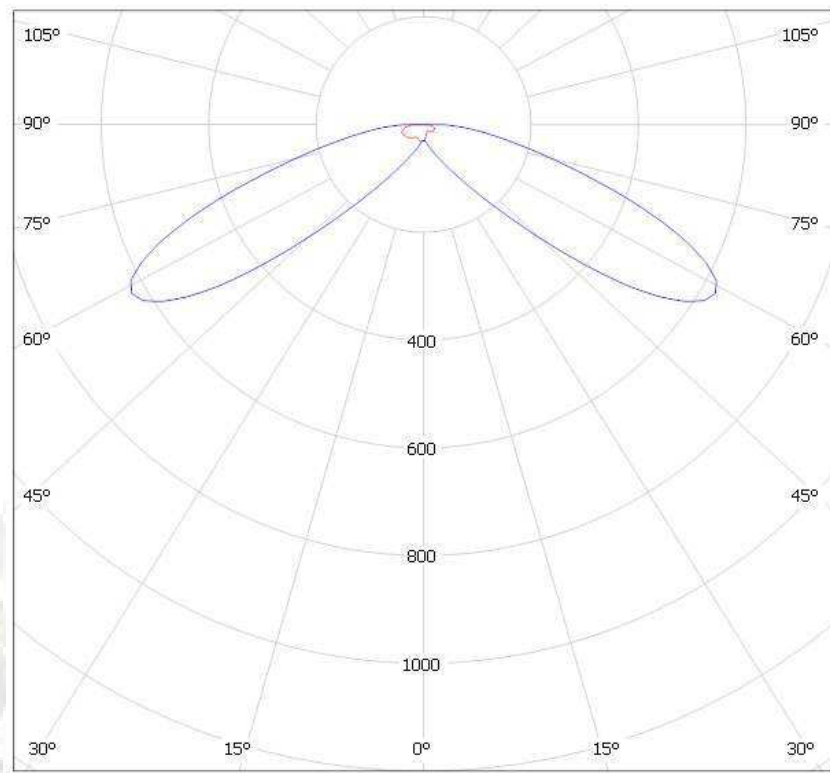
LENS TYPES

NAME	ORDERING CODE	FWHM Angle
Strada-T-DW-XP	C11425_Strada-T-DW-XP	approx. $\pm 72^\circ$
Strada-T-DW-XP-TAPE	CA11426_Strada-T-DW-XP -tape	approx. $\pm 72^\circ$

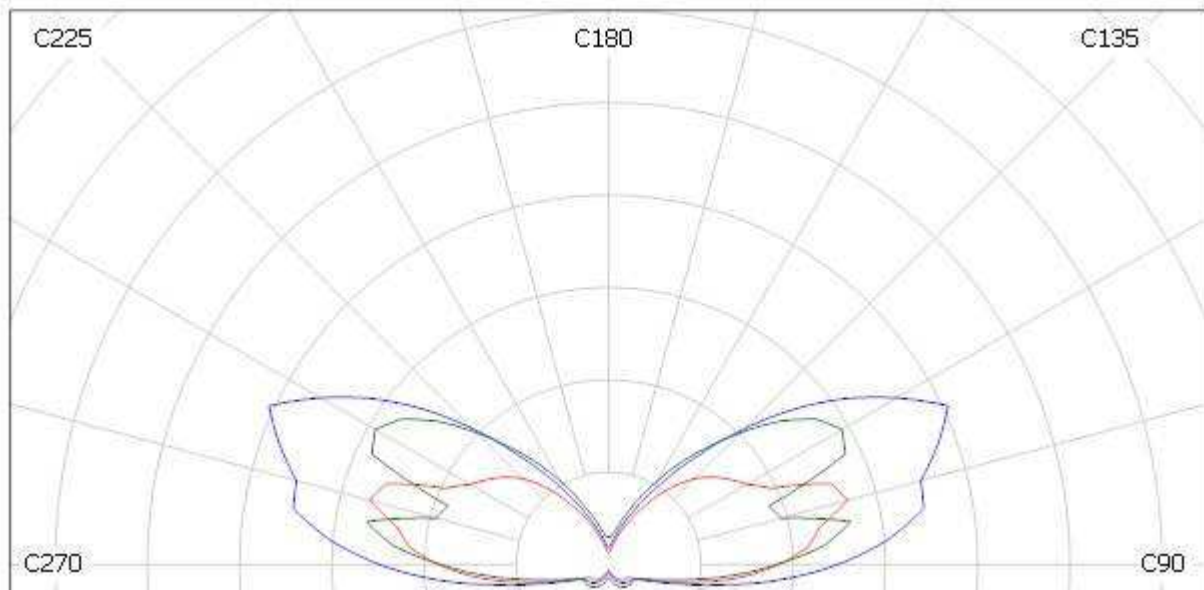
Eulumdat & IES files available by request.

© Ledil Oy – PRELIMINARY - Subject to change without prior notice

MEASUREMENT DATA & DRAWING



© Ledil Oy – PRELIMINARY - Subject to change without prior notice

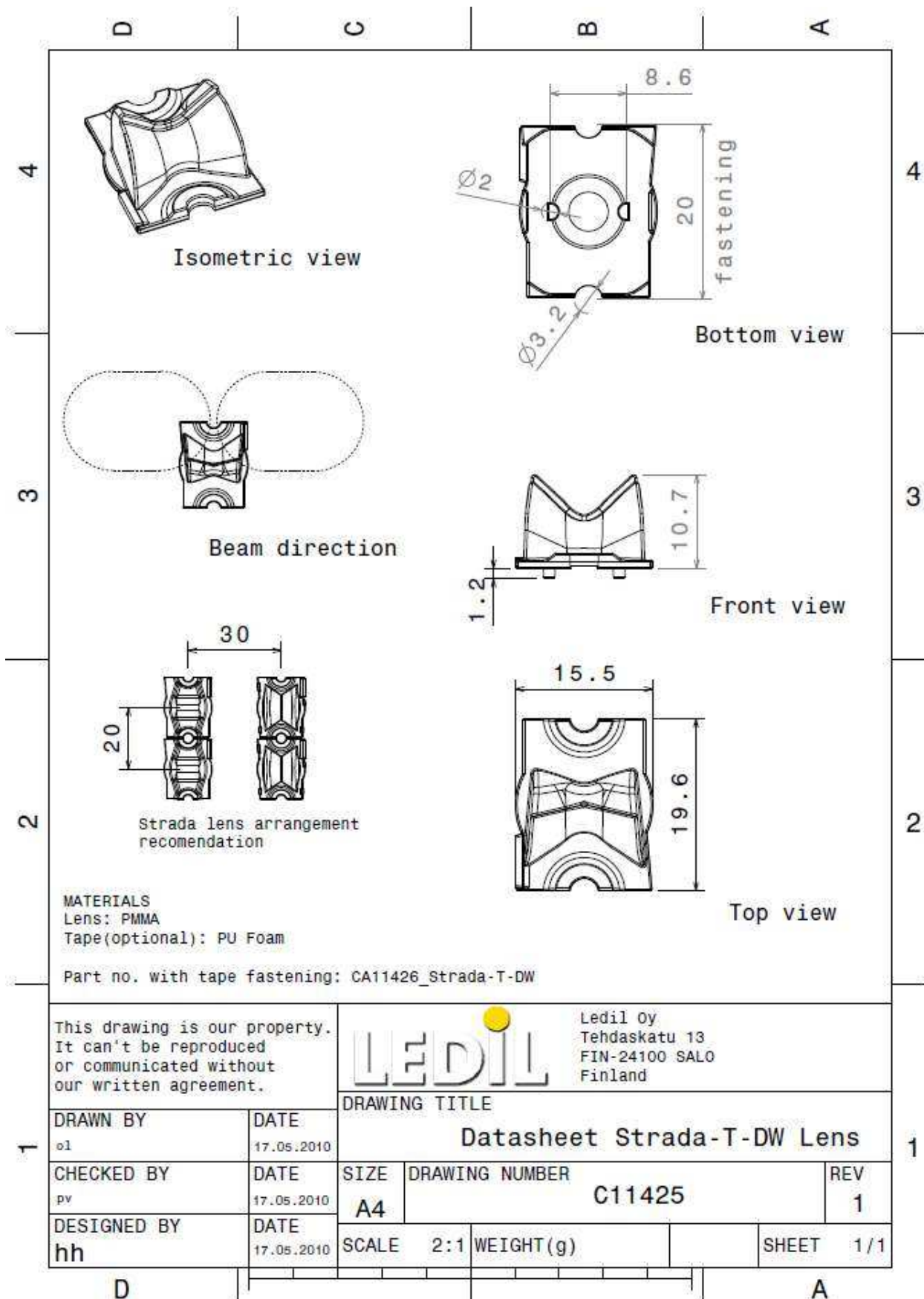


© Ledil Oy – PRELIMINARY - Subject to change without prior notice

Ledil Oy
Tehdaskatu 13
FIN-24100 SALO, Finland

www.ledil.com
email: ledil@ledil.com
FAX: +358-2-733 8001

2011-03-07



© Ledil Oy – PRELIMINARY - Subject to change without prior notice