

DESCRIPTION: STRAIGHT, SNAP TOGETHER - METALIZED PLASTIC

SPECIFICATIONS:

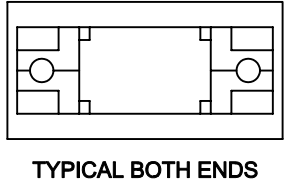
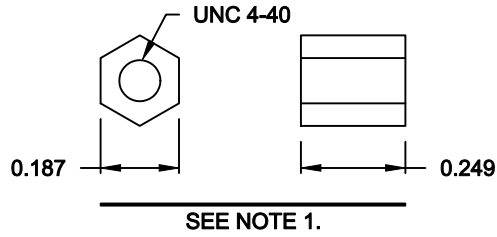
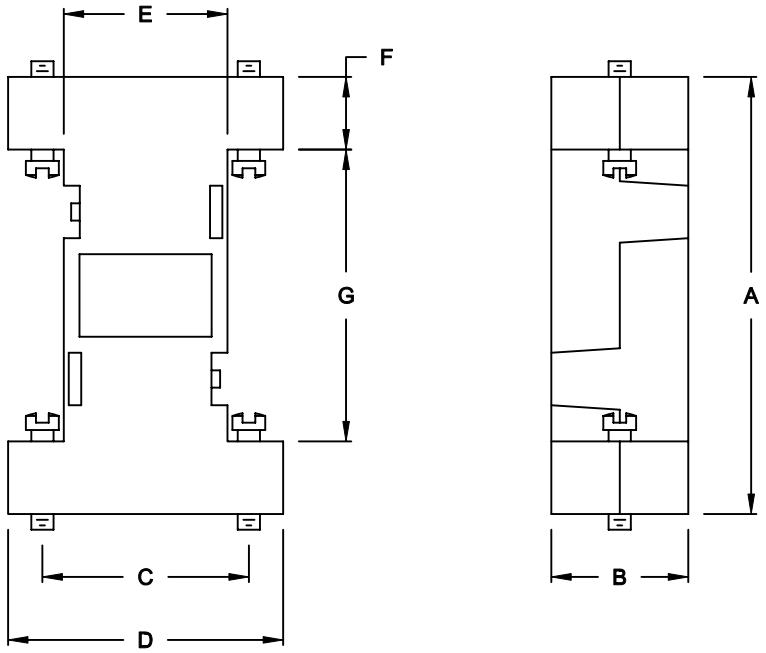
MATERIAL: A.B.S. UL94-HB
 PLATING: NICKEL OVER COPPER

BACKSHELL KIT INCLUDES:

- (2) BACKSHELL HALVES
- (4) JACKSCREWS

NOTE:

- 1. IF REQUIRED, COUPLING FOR FEMALE CONNECTOR, P/N 160-000-006R032, MUST BE ORDERED SEPARTELY



957-YYY-020R121

SERIES _____
 POSITIONS _____
 009 _____
 015 _____
 025 _____
 MATERIAL _____
 020 = METALIZED PLASTIC
 RoHS COMPLIANT _____
 COLOR _____
 12 = METAL(IZED)
 PUT-UP _____
 1 = KIT

DIMENSIONS (IN.)

No. OF PINS	A	B	C	D	E	F	G
09	2.083	0.653	0.984	1.311	0.780	0.346	1.390
15	2.047	0.630	1.311	1.614	1.087	0.354	1.339
25	2.087	0.638	1.852	2.177	1.654	0.351	1.386

DO NOT SCALE FROM DRAWING



THESE DRAWINGS AND SPECIFICATIONS ARE THE PROPERTY OF NorComp AND SHALL NOT BE REPRODUCED, COPIED OR USED AS THE BASIS FOR THE MANUFACTURE OF SALE OF APPARATUS WITHOUT WRITTEN PERMISSION.

DRAWN: **C. SMITH** DATE: **05-09-07**
 CHECKED: _____ DATE: _____

NorComp

SCALE: **1:1** SHEET **1** OF **1** REV **0**
 DWG NO. **957-YYY-020R121**

RoHS COMPLIANT