

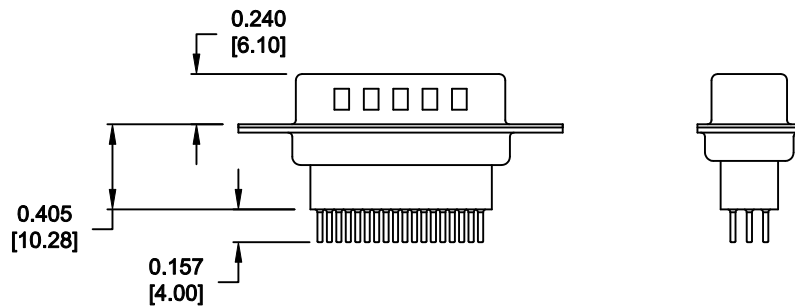
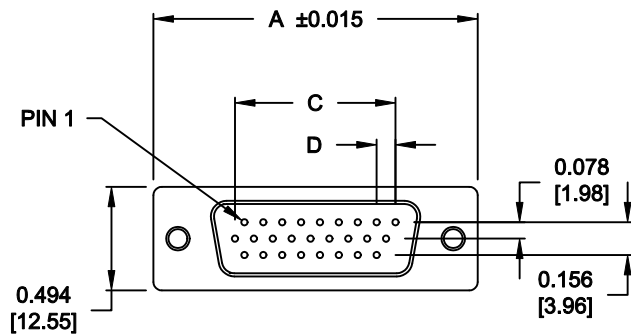
DESCRIPTION: HIGH DENSITY VERTICAL HIGH PROFILE MACHINED

**MATERIAL:**

INSULATOR: PBT, UL94V-0, 230°C PROCESS TEMP.,  
 CHEMICAL RESISTANCE, COLOR - BLACK  
 SHELL: STEEL, NICKEL PLATED  
 CONTACT: BRASS, GOLD FLASH ENTIRE CONTACT

**ELECTRICAL:**

CURRENT RATING: 2 AMPS  
 DIELECTRIC WITHSTANDING VOLTAGE: 1,000VAC rms  
 INSULATION RESISTANCE: 5,000 MegOhms Min.  
 CONTACT RESISTANCE: 10 MilliOhms Max.  
 WORKING TEMPERATURE: -55°C TO +125°C



**196-YYY-113LYY1**

SERIES \_\_\_\_\_  
 POSITIONS \_\_\_\_\_  
 015 \_\_\_\_\_  
 026 \_\_\_\_\_  
 GENDER \_\_\_\_\_  
 1 = MALE (GROUND INDENTS)  
 TERMINATION \_\_\_\_\_  
 1 = PC MOUNT  
 SHELL PLATING \_\_\_\_\_  
 3 = NICKEL PLATED  
 RoHS COMPLIANT (LOW TEMP. PROCESS) \_\_\_\_\_  
 HARDWARE OPTIONS \_\_\_\_\_  
 00 = 0.120" MOUNTING HOLE  
 03 = 4-40 HEX STANDOFFS  
 55 = 4-40 INSERTS  
 PLATING \_\_\_\_\_  
 1 = GOLD FLASH

**DIMENSIONS (IN.)**

No. OF PINS	A	B	C	D
15	1.214 [30.84]	0.984 [24.99]	0.405 [10.29]	0.090 [2.29]
26	1.545 [39.24]	1.312 [33.32]	0.765 [19.43]	0.090 [2.29]

**DO NOT SCALE FROM DRAWING**



THESE DRAWINGS AND SPECIFICATIONS ARE THE PROPERTY OF NorComp AND SHALL NOT BE REPRODUCED, COPIED OR USED AS THE BASIS FOR THE MANUFACTURE OF SALE OF APPARATUS WITHOUT WRITTEN PERMISSION.

DRAWN: **PAM JENKINS**

DATE: **09-15-05**

CHECKED:

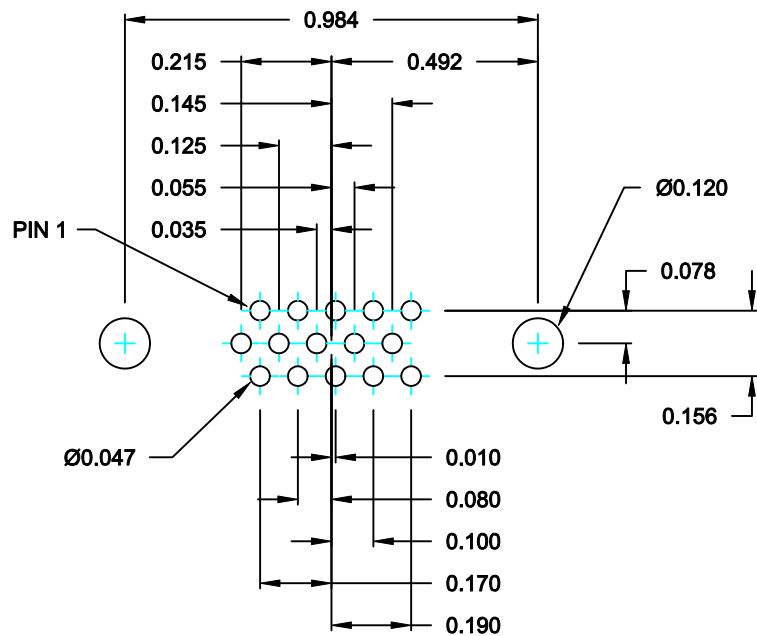
DATE:

**NorComp**

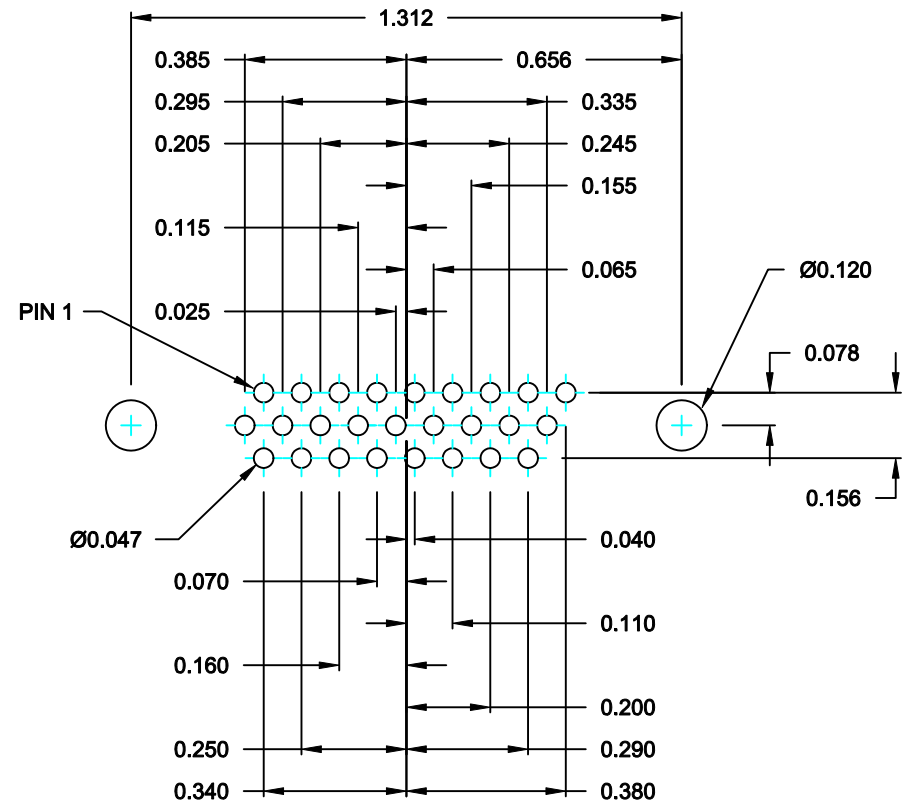
SCALE: **1:1** SHEET **1** OF **3** REV **4**

DWG NO. **196-YYY-113-LYY1**

**RoHS COMPLIANT**



15 POSITION



26 POSITION

DO NOT SCALE FROM DRAWING



THESE DRAWINGS AND SPECIFICATIONS ARE THE PROPERTY OF NorComp AND SHALL NOT BE REPRODUCED, COPIED OR USED AS THE BASIS FOR THE MANUFACTURE OF SALE OF APPARATUS WITHOUT WRITTEN PERMISSION.

DRAWN: **PAM JENKINS**

DATE: **10-29-01**

CHECKED:

DATE:

SCALE: **2:1**

SHEET **2** OF **3**

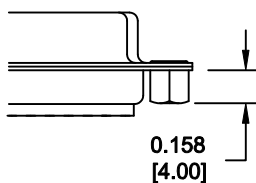
REV **4**

DWG NO. **196-YYY-113-LYY1**

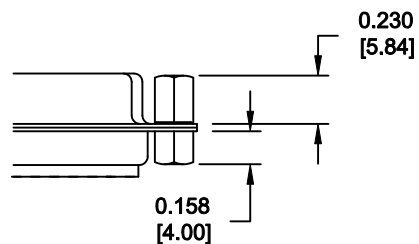
**NorComp**

RoHS COMPLIANT

55X ..... 0.158" (BOARD SIDE)



03X ..... 0.158" (BOARD SIDE) - 0.230" MATING SIDE



**DO NOT SCALE FROM DRAWING**



THESE DRAWINGS AND SPECIFICATIONS ARE THE PROPERTY OF NorComp AND SHALL NOT BE REPRODUCED, COPIED OR USED AS THE BASIS FOR THE MANUFACTURE OF SALE OF APPARATUS WITHOUT WRITTEN PERMISSION.

DRAWN: <b>M.SIGMON</b>		DATE: <b>11-19-10</b>	
CHECKED:		DATE:	
SCALE:	SHEET <b>3</b>	OF <b>3</b>	REV <b>4</b>
DWG NO.		<b>196-YYY-113-LYY1</b>	

**NorComp**

**RoHS COMPLIANT**