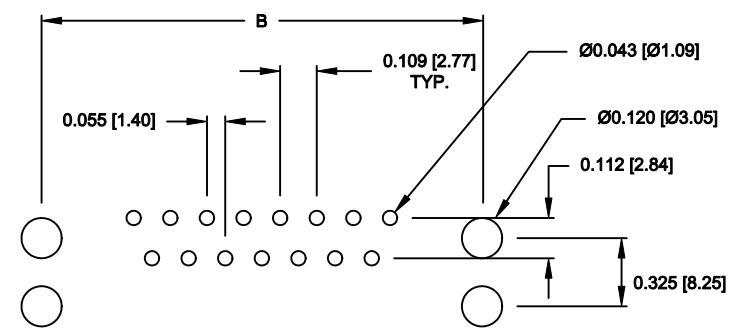
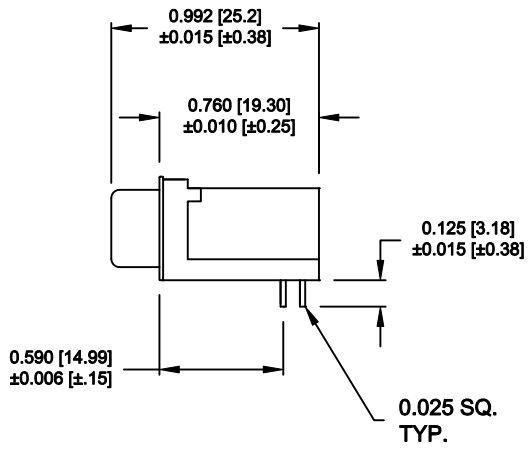
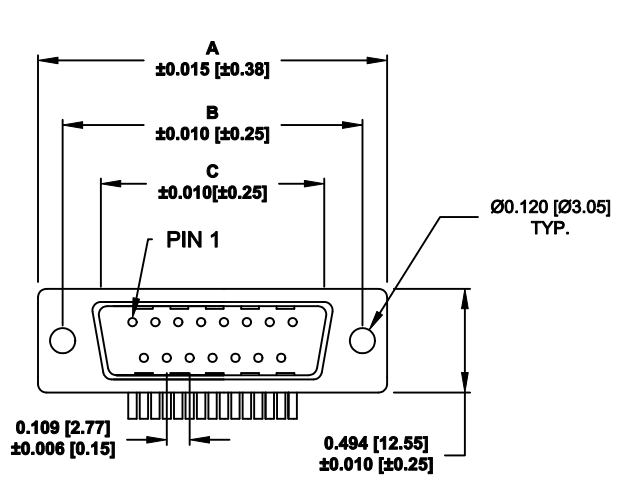


DESCRIPTION: IP66 - R/A 0.590 - MALE D-SUB - ECONOMY



RECOMMENDED PCB LAYOUT  
SCALE = 2 : 1

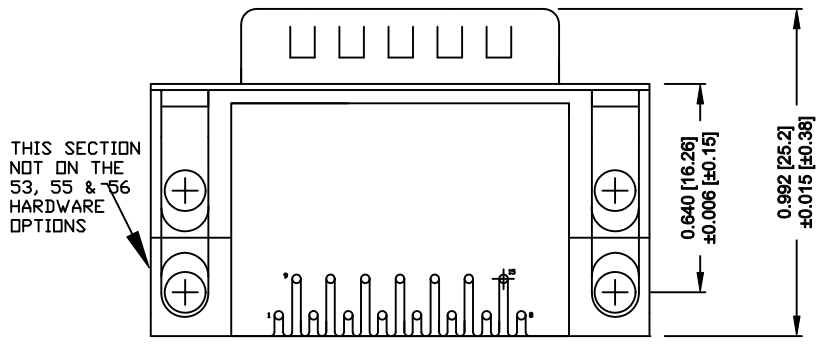
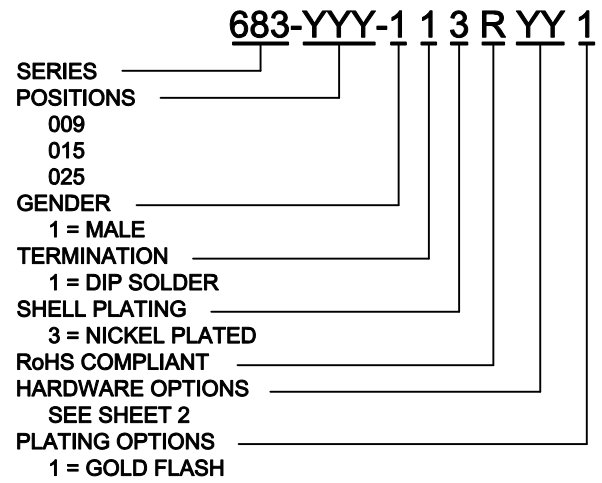
**MATERIALS:**

- SHELL: SPCC, NICKEL PLATED
- INSULATOR: BLACK PA9T NYLON, UL 94V-0
- CONTACTS: BRASS, GOLD PLATED
- RIVET: COPPER ALLOY, NICKEL PLATED
- SCREWLOCK: ZINC ALLOY, NICKEL PLATED
- BOARDLOCK: SPCC, TIN PLATED
- SEALING MATERIAL: F08 FLEXIBLE ADHESIVE

**ELECTRICAL:**

- CURRENT RATING: 5 AMPS
- INSULATOR RESISTANCE: 1,000 MEGOHMS Min.
- DIELECTRIC WITHSTANDING: 1,000VAC RMS
- TEMPERATURE: -55° C to +105° C

No. OF PINS	DIMENSIONS		
	A	B	C
9	1.213	0.984	0.666
	30.81	24.99	16.92
15	1.541	1.312	0.994
	39.14	33.32	25.25
25	2.088	1.852	1.534
	53.04	47.04	38.96



BOTTOM VIEW

**MEETS IP66 STANDARDS**  
(SEE PAGE 2 FOR SEALING DETAILS)

DO NOT SCALE FROM DRAWING

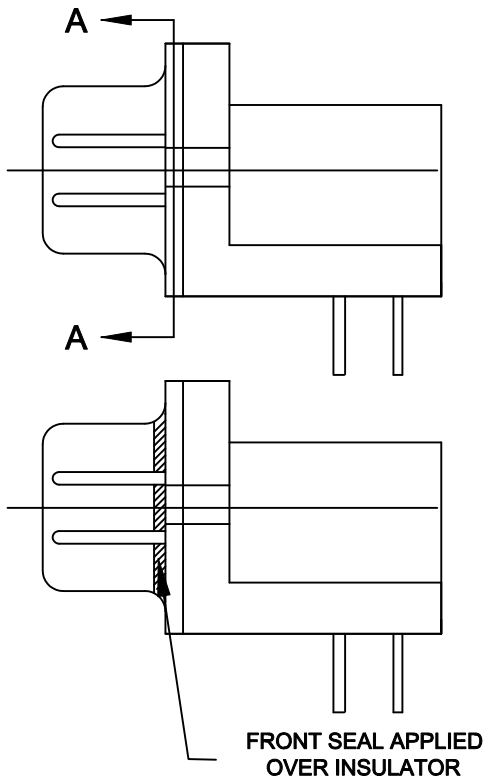
THIS SECTION NOT ON THE 53, 55 & 56 HARDWARE OPTIONS

**RoHS COMPLIANT**

	THESE DRAWINGS AND SPECIFICATIONS ARE THE PROPERTY OF NorComp AND SHALL NOT BE REPRODUCED, COPIED OR USED AS THE BASIS FOR THE MANUFACTURE OF SALE OF APPARATUS WITHOUT WRITTEN PERMISSION.		DRAWN: <b>M. SIGMON</b>	DATE: <b>02-24-12</b>
			CHECKED:	DATE:
<b>NorComp</b>		SCALE: <b>1 : 1</b>	SHEET <b>1</b>	OF <b>2</b>
		DWG NO. <b>683-YYY-113RYY1</b>		REV <b>0</b>

DESCRIPTION: IP66 - R / A HARDWARE OPTIONS

**SEALING PROCESS**



FRONT SEAL APPLIED OVER INSULATOR

DETAIL A-A

**HARDWARE OPTIONS**

	<p>0.141 ±0.020</p> <p>METAL SHELL WITH INSIDE GROUND STRAPS</p>	<p>0.500</p> <p>METAL SHELL FORK BOARD LOCKS</p>
<p>4-40 FLUSH INSERT</p>	17	<p>53</p> <p>BOARD LOCKS IN FRONT HOLE (0.590")</p>

DO NOT SCALE FROM DRAWING



THESE DRAWINGS AND SPECIFICATIONS ARE THE PROPERTY OF NorComp AND SHALL NOT BE REPRODUCED, COPIED OR USED AS THE BASIS FOR THE MANUFACTURE OF SALE OF APPARATUS WITHOUT WRITTEN PERMISSION.

DRAWN:  
**M. SIGMON**

DATE:  
**02-24-12**

CHECKED:

DATE:

**NorComp**

SCALE:	SHEET 2 OF 2	REV 0
--------	--------------	-------

DWG NO. **683-YYY-113RYY1**

RoHS COMPLIANT